



RELAC *newsletter*

Over 50 Years of Dedicated Service to L.A. County Retirees

May/June 2013 Vol 49-3

President's Message

by David Muir



My message in the last edition reported on a pension reform initiative that the sponsors were trying to qualify for the November ballot. If passed by the voters, current employees would no longer be guaranteed that the retirement benefits in place when they started the job could not be reduced. In other words, the benefit formulas would not be vested. In addition, retiree healthcare benefits for people still working could be reduced. I'm happy to report the sponsors of this misguided measure abandoned it after the Attorney General issued the summary of the measure that would be printed in the ballot. They didn't like the fact that the Attorney General's summary pointed out how the measure would be harmful to public employees. The sponsors even sued in court to try to get the Attorney General's summary amended. They lost.

Speaking of pension reform, I've been concerned for years over the loss of retirement security in the private sector. In 2011 and 2012, I chaired the Retirement Security Committee of the California Retired County Employees Association that produced a report entitled "Transition to 401(k) Plans – A Train Wreck In The Making." (You can read the report by going to RELAC's website.) That report demonstrated how the elimination of traditional pensions in the private sector has utterly destroyed pension security for millions of workers across the country. A new report released by the National Institute for Retirement Security (NIRS) rates retirement security by state. NIRS reports that when it comes to security of retirees, California ranks among the bottom three. NIRS found that the average balance of defined contribution accounts in California is a measly \$23,381. At the rate things are going, the U.S. will find itself a nation with masses of seniors living in poverty. Think about what this means for our children and grandchildren. Yet pension reformers continue with their campaign to destroy pensions for public workers.

In closing, I want to mention how vital it is for RELAC to remain an organization with substantial resources and clout required to counter the continual attacks on our pensions and healthcare benefits while at the same time providing a wealth of social and other activities for our members. We can only do that by maintaining very large membership. We recently completed a "mass mailing" project under which LACERA mailed, at RELAC'S expense, a recruitment package to all 58,000 LACERA retirees. Pacific Group Agencies, the firm that administers our supplemental insurance program, paid for half the cost. We were delighted with the results. We gained over 1,000 new members. But, unfortunately, during the 2013 calendar year we lost 669 due to member deaths and other causes. So you can see what challenges we face in trying to grow our membership. I would like to enlist all of you to help us gain new members. Please contact your friends who are also LACERA retirees and urge them to join RELAC. This is very important to all of us.

- • • • •
- **LATE BULLETIN** •
- At its meeting on April 15, 2014 the LACERA •
- Board of Retirement appointed RELAC's •
- President, Dave Muir, as Alternate Retired •
- Board Member. Dave was the nominee of •
- the RELAC Board of Directors to complete •
- the term of the late Ed Morris as Alternate •
- Retired Member. •
- • • • •

Inside the Newsletter

Dave Muir, RELAC's Legislation Chair, reviews the early activity of the California State Senate and Assembly regarding bills pertaining to public pensions and retiree interests. See Dave's report on **page five** of this Newsletter.

Get all of the information you will need about this year's **RELAC Night at Dodger Stadium** on Friday, July 11 as well as the sign-up coupon on **page five**. The visiting team is the San Diego Padres. There will plenty of fireworks on the field as well as in the sky.

Supervisor Michael Antonovich is again sponsoring the **Annual Salute to Veterans**. The date is May 24. There will be too many activities and events to mention here. But you will find them all listed on **page six**.

It's not too early to sign up for the very popular **Regional Meeting in Las Vegas**. It is scheduled for September 23. You will want to get aboard before all the seats in the room are spoken for. See the Regional Activities article and the accompanying registration coupon on **page three**. In the same article will be found your invitation to the May 21 meeting in **Rancho Cucamonga**.

On page two Greg Walia provides a clarification of the ground rules which govern two of the supplementary insurance plans, **the vision and dental plans**. Take a look if you have either of these plans or are interested in buying either plan.

SUPPLEMENTAL BENEFITS FOR DENTAL AND VISION PLANS EXPLAINED

by Greg Walia, Chair
Supplemental Benefits Committee

Many RELAC members have taken advantage of the Supplemental Dental and Vision plans offered through Pacific Group Agencies and insured by Ameritas. However, some members may be unaware of how to get the full benefits from these plans. For clarification, we would like to point out the following:



The Dental Plan is specially designed to supplement another **PPO Plan** such as the LACERA provided Cigna PPO Plan. **It will not work with an HMO Plan.** The Ameritas Plan is designed to help cover the out-of-pocket costs that you normally have when using the LACERA provided plan. However, if you do not have another dental plan, this plan will work as a stand-alone plan. You are not required to visit any specific dentist to use this plan. You may see any dentist.

The Vision Plan is completely independent of any other vision plan you may have and it is designed for members who either have a LACERA plan but want a second set of glasses/contacts during the year or for members who do not have any other vision coverage. **This supplemental vision plan is materials only.** It covers lenses, frames and contacts, but **does not** cover eye examinations. You may see any eye care provider.

You may only enroll in the Dental and Vision Plans during the Open Enrollment period which occurs around mid-October to early December. All RELAC members will receive enrollment information in the mail later this year. The other supplemental benefit plans are available for enrollment year round.

Please contact Pacific Group Agencies at (800) 511-9065 for information on enrolling.



Investments Board

by Diane Sandoval
Retiree Representative,
LACERA Board of Investments



At the Board of Investments Meeting of March 12, 2014, LACERA's Actuary, Milliman, presented the results of the Actuarial Valuation as of June 30, 2013. Milliman reported LACERA's funded status was 75.0% as of June 30, 2013 -- a decrease from a year ago (June 30, 2012) when Milliman reported LACERA's funded status was 76.8%. The Actuarial Valuation on an 8-1 vote was adopted and the Board of Investments directed LACERA's CEO to communicate the results to the Board of Supervisors with a recommendation to implement the employer and employee rates no later than September 30, 2014. The actuary projects the expected annual employer contribution for the fiscal year 2014/2015 to be \$1.47 billion, an annual increase of approximately \$96 million.

As I've explained in previous articles when I have reported the results of the valuation, a Valuation Report is frequently described as a snapshot of a retirement plan's funded status at a particular point in time. Since LACERA is on a fiscal year basis the actuary conducts their valuation as of June 30 each year, the end of LACERA's fiscal year.

Another way to look at a valuation is to think of an inventory process. The inventory is taken as of the valuation date, which for LACERA is June 30, 2013. On that date, the assets available for the payment of retirement benefits are appraised. These assets are compared with the predicted liabilities, both accrued and future, for current members. The liabilities are generally in excess of the predicted assets. The purpose of the valuation is to determine what future contributions by the members and employers are needed to pay all expected future benefits.

In order to mitigate large swings in the contribution rates, asset gains and losses are smoothed over a five year period. The smoothing method is currently deferring \$1.40 billion in net asset gains and will be recognized in future valuations.

INTERESTING STATISTICS

The valuation reported a .4% decrease in the size of the active member population which totals approximately 91,500 with an overall average age of 46.9. The retired population increased by 2.3% and totals over 58,000. The average benefit payment increased by 3.1% to approximately \$3,750 per month and the average age of retirees increased by approximately six months to 72.1%. This means we are living longer! Hooray!!!

According to the most recent staff memorandum, the **estimated** total market value of the portfolio as of February 28, 2014 was \$45.1 billion. The **estimated** portfolio return for the fiscal year to date (July 1, 2013 through February 28, 2014) was 11.5%. Please note performance calculations for the Real Estate and Private Equity portfolios use the most recent available quarterly returns. Performance of Hedge Funds is one month in arrears.

Until the next issue, thank you for your continued interest and support. Take care, enjoy your retirement and stay well!

Regional Activities and Special Events

by Diāne Sandoval

Chair, Regional Support/Special Events Committee

Thank you for making our Palmdale/Lancaster luncheon meeting on March 31, 2014 a resounding success. Over 100 were in attendance. RELAC was privileged to have Mr. Norman Hickling, Senior Deputy to Supervisor Antonovich, welcome the group and provide an update on the latest issues affecting members residing in the Palmdale/Lancaster area and surrounding cities.

Mr. Robert Hill, LACERA Assistant Executive Officer, provided an update on the status of the Fund and spoke on issues affecting our retirement and medical benefits. Everyone who attended enjoyed a delicious lunch catered by Three Roses Catering and those fortunate to be the holders of the winning raffle tickets drove home a little richer than when they arrived.

Rancho Cucamonga Regional Meeting – Wednesday, May 21, 2014

Our next Regional Meeting is scheduled on May 21, 2014 at the Goldy S. Lewis Community Center in Rancho Cucamonga, CA. A Deputy Sheriff from the San Bernardino Sheriff's Department is scheduled to speak about Identity Theft, Guarding Against Scams/Fraud and Keeping Us Safe From Predators. Complimentary refreshments will be served. Doors open at 9:00 a.m. and the meeting will begin at 10:00 a.m. If you live in the area, please plan to attend.

Las Vegas Regional Luncheon Meeting – Tuesday, September 23, 2014

You spoke and we listened! RELAC is returning to Las Vegas. This year we are holding the Regional Luncheon Meeting at The Orleans, 4500 W. Tropicana Avenue, Las Vegas, NV 89103. Prior to finalizing the contract my husband and I toured the property and were impressed with its many amenities. Read on for important information!

This event is again open to **all Los Angeles County retirees**. RELAC wants **all** retirees, members and non-members, to participate in this great event – it's a chance to see old friends, make new ones and enjoy wonderful food while being briefed on topics affecting you! Join your fellow LA County retirees for a day of entertainment and education about retirement and medical issues that affect you!

To discuss the most current issues and answer your retirement questions, **LACERA CEO Gregg Rademacher** will speak on the Status of LACERA and a **Clinical Advisor (Pharmacist - name to be announced) from CVS Caremark** will speak on Drug Interaction. Many of us take supplements in addition to our prescribed medication. Often times the supplements may conflict with the prescribed medication and lengthen our healing process. Plan to attend to learn more.

Plan to stay at The Orleans Hotel and Casino for only \$39.00 per night (plus tax), valid Monday and Tuesday. A limited number of rooms will be available at the \$39.00 rate (plus tax) on Sunday. There is a mandatory \$9.99 resort fee which includes access to the Fitness Center, in-room Wi-Fi, in-room coffee, unlimited local and 800 calls as well as Wi-Fi in the Java Vegas Coffee Shop and high-speed Internet access in the Hotel's Business Center. Check-In begins at 3:00 p.m. Check out time is 12 noon. **Room reservations must be made no later than August 21, 2014 to receive the negotiated rate. Call The Orleans Hotel Reservation Desk directly at (800) 675-3267 or through the Hotel's website at www.orleanscasino.com/group. Be sure to reference the group code A4LAC09 when making your room reservations.**

The Committee has selected a delicious plated lunch at a cost of \$25.00 per person, the same price as last year. Your choices are: Roast Sirloin (Beef) or Parmesan Crusted Chicken (Chicken). Both lunch selections include Salad and Dessert, the Chef's selection of Fresh Vegetables and Starch, Fresh Rolls and Butter, Freshly Brewed Coffee, Decaffeinated Coffee, Tea and Ice Tea. Complete the pre-registration form to the right and mail it to: RELAC, 1000 S. Fremont Avenue, Unit 15, Alhambra, CA 91803-8802 along with a check payable to RELAC no later than **September 9, 2014**.

Mark Your Calendars for Other Events:

Details to follow in next newsletter article:

Annual RELAC Picnic

October 4, 2014 at Santa Fe Dam, Irwindale, CA

Annual Recognition Luncheon Meeting

January 29, 2015

at Almansor Court in Alhambra, CA

In closing as you can see the committee has an exciting year planned for you. We enjoy holding these events and appreciate your support.

Las Vegas
Regional Support Luncheon Meeting
Sept. 23, 2014 - 12:00 noon, doors open 10:30 a.m.
THE ORLEANS HOTEL AND CASINO
4500 W. Tropicana Avenue, Las Vegas, NV 89103

Name _____

Address _____

City _____ State _____ Zip _____

Guest(s) _____

Number of Tickets: _____ @ \$25.00 ea. = \$ _____

_____ Beef _____ Chicken
(Tickets to be picked up at door)
Make check/money order payable to "RELAC"
and mail to:
RELAC
1000 South Fremont Avenue, Unit 15
Alhambra, CA 91803-8802

Reservation Deadline – September 9, 2014



IMPORTANT REMINDER!

WE CONTINUE TO LOOK FOR LOST MEMBERS. IF YOU MOVE, BE SURE TO LET RELAC KNOW YOUR NEW ADDRESS. BECAUSE OF PRIVACY LAWS, LACERA IS NOT ABLE TO PROVIDE US WITH ADDRESS CHANGES OF RETIREES.

CALL US AT 800-537-3522, FAX US AT 626-308-2901 OR EMAIL US AT admin@relac.org.

VEHICLE LOANS

Drive your dream car today!

Vehicle Loans

as low as

1.99

%
APR*

- Loan approval within minutes
- New Vehicle Loan Rates as low as 1.99% APR*
- Rate includes a discount of .25% for automatic payments from your Southland Checking
- Repayment terms up to 7 years
- Finance up to 120% of the purchase price with tax, license, and insurance

Southland
CREDIT UNION



Membership is subject to eligibility. All new accounts will be verified through ChexSystems and are subject to credit approval. *APR—Annual Percentage Rate. Rate quoted as of 4-1-14 for a 72-month term. Rate includes a .25% discount for autopay from a Southland Checking or Money Market Account. The monthly payment is \$14.75 per \$1,000 at 1.99% for 72 months on new vehicles. The monthly payment is \$14.25 per \$1,000 at 5.24% for 84 months on new vehicles. Other rates may apply based on your individual credit profile. Loans made subject to credit and vehicle qualification, other fees and conditions may apply. Rates are subject to change without notice.

www.SouthlandCU.org • 888.906.8350

Membership/Recruitment News

by Jason H. Williams, Chair
Membership/Recruitment Committee

In each edition of the newsletter I've pointed out the committee's efforts to grow RELAC's membership.

Why is this important to every RELAC member?

This is vitally important because, if RELAC is to remain the premier organization whose primary missions are to preserve and protect Los Angeles County retirees' pension and healthcare benefits, we must maintain a large membership!

RELAC Board President Dave Muir mentioned this very important topic in his **President's Message** on page one of this Newsletter.

Last year, our committee recruited a total of **1,222** new members; however, we lost **669** members due to death and other causes. In other words **our net membership increased by only 553 new members!** **RELAC must do a better job of recruiting new members!**

Our committee has plans for growing our membership in 2014, which were described in the March/April edition of the Newsletter. **But we are now asking the help of all RELAC members to help us recruit new members!** Each time a RELAC member recruits a new member, simply have the new member write the name of the RELAC member who recruited him or her at the bottom of the membership application form. **The names of all RELAC members who recruit new members will be published in the Newsletter.** Please call the RELAC office at (800) 537-3522 to request membership applications. Thank you for your help in keeping our numbers strong and growing!



WANTED!

NEED MOTORIZED ELECTRIC WHEEL CHAIR/SCOOTER - that accommodates 120# - 150#, 30" wheel to wheel, not damaged/original stats. Please provide following information: asking price, age of chair/scooter, age of battery, customized, weight of item, where used geographically, collapsible/transferable, does it have accessories: carrying books, small items, does it come with an eating tray, where was it made/manufactured? Call Between 9:00 a.m. - 7:00 p.m. daily at 323-734-8009 or 323-775-8641. Send photos via my email at mspj699lakeviewrd@gmail.com.



LEGISLATION REPORT

by: Dave Muir
Chair, Legislation Committee

It looks like 2014 will be a relatively uneventful year for retirement legislation, at least from the few bills that have been introduced. None are particularly earth shattering as far as retirees are concerned. Below is a quick summary of the bills we're keeping our eye on or we thought were interesting.

AB 1448 (Mullin) would prohibit the governing body of a city, county, city and county, school board, special district, or any other entity of local government from granting lifetime healthcare benefits to an elected official who serves part time. **Would not affect us, but I thought it was interesting.**

AB 1681 (Allen) would require a memorandum of understanding relating to postemployment health care benefits between a public employer and employees to contain a plan to begin the permanent prefunding of postemployment health care benefits. It also provides that the plan may authorize any amount that otherwise would be used to permanently increase employee compensation to be used to permanently prefund members' postemployment healthcare benefits. **Would not affect us directly, but anything that makes the retiree healthcare program more sustainable is good for all of us.**

AB 2040 (Garcia) would require a local agency to report to the State Controller the annual compensation of its public officials, including, but not limited to, separately listing the name and title of each public official and his or her monthly compensation, the definition of which would be expanded to include many items other than salary. It would also require a local agency that maintains an Internet Website to either post the annual compensation of its public officials, or post a link to the Controller's Government Compensation in California Internet Website. Registered opposition thus far includes the Association of California Health Care Districts, California Association of Sanitation Agencies, California Professional Firefighters, and California Special Districts Association. **Another interesting bill but of no particular concern to us.**

We've not identified any bills that are a concern to LACERA retirees, but we will be watching closely, as anything can change in Sacramento.

RELAC Night at Dodger Stadium Friday, July 11, 2014

Last Call!

by Mary K. Rodriguez
Chair, Recreation Committee

The Los Angeles Dodgers are playing the San Diego Padres. It is going to be a great game! Following the game will be a SPECTACULAR FIREWORKS SHOW!

The ticket price is \$28.00 per person but, with RELAC's subsidy, you pay \$25.00 per ticket. The seats are located in the lower reserved section behind home plate. A very desirable location!

This RELAC event is always well attended and a limited number of seats are still available. Please fill out the coupon below and send it along with your check as soon as possible.

PLEASE NOTE: THE DEADLINE FOR RESERVATIONS HAS BEEN CHANGED TO JUNE 10, 2014 (TICKETS MAY NOT BE AVAILABLE AFTER THE JUNE 10th DEADLINE). LAST YEAR WE HAD TO TURN SEVERAL MEMBERS AWAY.

Your tickets will be mailed to you on July 2, 2014. Come out and enjoy the evening. Hope to see you there!

Go Dodgers!!!



DODGERS VS. SAN DIEGO PADRES Friday, July 11, 2014

Name: _____

Address: _____

City/State/Zip: _____

Phone: (_____) _____

Number of Tickets: _____ @ \$25.00 each

Total Amount Enclosed: \$ _____

Make checks payable to RELAC and mail to:
RELAC
1000 So. Fremont Ave., #15
Alhambra, CA 91803-8802

DEADLINE – JUNE 10, 2014



**Los Angeles County Supervisor
Mike Antonovich**



~*~*~

***17th Annual Salute to Veterans
and Their Families***

Saturday, May 24, 2014 - 10 a.m. to 2 p.m.

Arcadia County Park - 405 S. Santa Anita Avenue, Arcadia

**** Memorial Day Tribute to Fallen Heroes and POW-MIAs at 11:00am ****

FREE ADMISSION! FREE PARKING!

- ***California Army National Guard's 40th Infantry Division Band***
- ***Information booths: Veterans' benefits, employment and legal info***
- ***Live music; food trucks; food booths; children's games***
- ***Free haircuts, manicures, immunizations and health screenings***
- ***Vintage aircraft flyover and skydivers***
- ***Wall of Remembrance – bring a photo to display and honor a veteran***

FOR MORE INFORMATION CALL: 909-394-2264

Event sponsors:



RELAC NEWSLETTER

Vol 49 - May-June 2014
Number 3

Retired Employees
of Los Angeles County
1000 S. Fremont Ave.
Unit 15, Alhambra, CA
91803-8802
(626) 308-0532
(800) 537-3522
Fax (626) 308-2901
E-mail: admin@relac.org

Board of Directors

President

David L. Muir

Vice President

Greg Walia

Secretary

Mary K. Rodriguez

Treasurer

Diane Sandoval

Past President

Bill de la Garza

Members

Mary Lou Bangar

Steve Duron

Donald Fandry

Martin Golds

Judy Hammond

J. P. Harris

George Hernandez

Alice Prouty

Simon Russin

Jason H. Williams

Emeritus

Dave E. Kalinge

Editor: Martin Golds
Copyright © 2013 by
RELAC. This information
presented in your RELAC
Newsletter is believed to
be from reliable sources.
However, no responsibility
is assumed by RELAC or
the writers for inaccuracies
in the articles as published.

Office Hours

9:00am - 4:00pm

Monday - Thursday

Closed Friday, Saturday,

Sunday &

Public Holidays

website:

www.relac.org

Golf News



By Gil Sandoval
RELAC Golf Director



La Mirada Golf Tournament March 24, 2014

Mike Barreras won the "A" flight with a net 65. He was 3 strokes up on Mike Haile, Jerry Nottke and Michael Hernandez with Mike Haile taking 2nd in a card off. Jerry Nottke took 3rd in card off with Michael Hernandez.

The "B" flight was well played by all of the winners as John Madrid shot the low net of the day at a score of 58. John Wehrly came in 2nd with a great net 61. He was followed by Ron Harrington in 3rd with a net 63.

The "C" flight was won by Tony Cancel at net 65, well ahead of Frank Barajas, who took 2nd with a net 71. Jerome Clayton was 3rd with a good net 72.

Kathy Malmfeldt won the Ladies competition with a net 66. Cecilia Worcester came in 2nd with a net 74. In 3rd was Charlene DeBie with a net 76.

Please keep Richard Duran in your prayers as he had to be taken to emergency after our last tournament. He is going to require heart surgery and has been diagnosed with kidney cancer. So, keep praying for Richard and his family through these trying times.

Los Amigos Results:

"A" Flight Winners (19 and under)

1 st	Michael Barreras	(65)
2 nd	Mike Haile	(68)*
3 rd	Jerry Nottke	(68)*

"B" Flight (20-27 Handicaps)

1 st	John Madrid	(58)
2 nd	John Wehrly	(61)
3 rd	Ron Harrington	(63)

"C" Flight (28 up Handicaps)

1 st	Tony Cancel	(65)
2 nd	Frank Barajas	(71)
3 rd	Jerome Clayton	(72)

Women's Flight

1 st	Kathy Malmfeldt	(66)
2 nd	Cecilia Worcester	(74)
3 rd	Charlene DeBie	(76)

**Winner in a card off*

Closest to the Pin on Par 3's

Men: # 3 - Michael Hernandez
5 - Mike Barreras
9 - John Wehrly
#11 - Jerry Nottke
#13 - Michael Hernandez
#17 - Ed Acosta

Women: There were no winners closest to the pins on par three holes.

NEXT TOURNAMENT - Monday, June 9, 2014
Santa Anita Golf Course, 8:00 a.m. Start
Entry Deadline: May 15, 2014

RELAC Golf Entry Form



Santa Anita Golf Course
405 S. Santa Anita Ave.
Arcadia, CA 91006

Monday, June 9, 2014
8:00 am start

Please Print

1. Name _____

Address _____

City _____ Zip _____

Phone _____

Fees: \$32.00 PER GOLFER - CART EXTRA

If possible, place me in a foursome with below listed golfers. Addresses of all golfers MUST be included.
If possible, we would prefer an
Early _____ Late _____ starting time.

2. Name _____

Address _____

City _____ Zip _____

Phone _____

3. Name _____

Address _____

City _____ Zip _____

Phone _____

4. Name _____

Address _____

City _____ Zip _____

Phone _____

NOTE: Only ONE GUEST per member.
Enclose check for _____ golfers @ \$32 per
Golfer. Make checks payable to RELAC.

Mail entry to

RELAC, 1000 So. Fremont Ave., #15,
Alhambra, CA 91803-8802

Entry Deadline

May 15, 2014

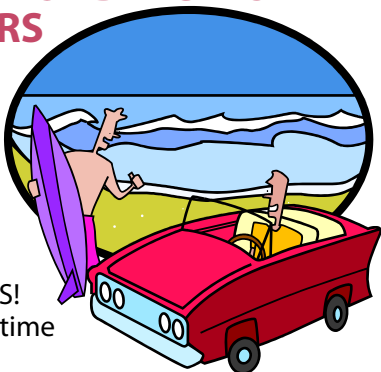
**ALL CHECKS MUST BE
IN RELAC OFFICE**

Members Spotlight



DEPARTMENT OF BEACHES AND HARBORS

Offers FREE Parking Passes to Seniors



ATTENTION SENIORS!

To obtain a free daytime beach parking pass (good on non-holiday weekdays only) you must be at least 62 years of age. Here's what you do. Just send a copy of your current driver's license, vehicle registration and current address if different than the one on your driver's license to the Los Angeles County Department of Beaches and Harbors, Attention Senior Parking Passes, 13837 Fiji Way, Marina del Rey, CA 90292. It takes about two to three weeks to process and receive your pass in the mail. No passes are issued over the counter. You may enjoy your free parking pass when visiting beaches in Malibu, Pacific Palisades, Venice, Playa del Rey, Marina del Rey, Torrance and San Pedro. For more details call (310) 305-9503.

Volunteers Sought for County Victim-Witness Assistance Program

The Los Angeles County District Attorney's Office, Victim-Witness Assistance Program seeks volunteers to work with law enforcement agencies and court systems to provide services and assistance to victims of crime. If you would like to play an important role in providing advocacy, clerical and court support and resource referrals to victims and witnesses of crime, please call Shari Farmer at 1-800-380-3811 for more information. Applicants must be in reasonably good health, pass a background check, complete a comprehensive six-hour training program and be available for at least 16 hours per week during normal business hours. Every effort will be made to place volunteers in their desired geographic or special interest areas.

Former Supervisor Pete Schabarum Celebrates 85th Birthday Party Included Former Aides Who Are RELAC Members

by Judy Hammond,
RELAC Board Member

RELAC member Pete Schabarum, a County Supervisor for 20 years, celebrated his 85th birthday with more than 300 friends on April 5 at his namesake Schabarum Regional Park in Rowland Heights.

Schabarum, whose actual birthday is in January, retired in March 1991. He now lives in Indian Wells. He remains active, fishing in the summer, traveling abroad and throughout the United States, organizing monthly luncheons for fellow retired NFL players, attending Rancheros Visitadores activities, and staying involved in Pappy's Boys, a group of men who played football under Coach Pappy Waldorf at Cal Berkeley.

Steve Napolitano, Senior Deputy to Supervisor Don Knabe, presented Schabarum with a scroll signed by all five current Supervisors.

Among those attending the event were RELAC Board Director Judy Hammond, Office Manager Marilyn Lewis, and RELAC Members Tom Hageman, Tom Hibbard, Stephanie Hampton, Lynn Atkinson, all former Schabarum aides.

Also in attendance were at least six members of Schabarum's 1947 graduating class of Covina High School, his secretary from the State Legislature, numerous former County employees and associates, and his three children and their families. Friends traveled from throughout the United States to mark the occasion.



RELAC members attending former County Supervisor Pete Schabarum's 85th birthday celebration included, from left, Stephanie Hampton, Marilyn Lewis, Lynn Atkinson, Pete Schabarum, Judy Hammond, Tom Hageman and Tom Hibbard. All in the photo with the Supervisor were his Aides. (photo by Jim Camp)

News From LACERA

by JJ Popowich
Assistant Executive Officer

I was reading through some past articles to give me an idea for this month's topic when I realized April is when I like to let our retired members know the results of LACERA's annual "March Madness" season. "March Madness" is our affectionate term for the period between December and March when we see the most members retire each year. This is the most popular time as members want to retire in time to be eligible for any April 1st cost of living adjustment (COLA) that may be approved. We don't have the final numbers yet for this year's "March Madness" event, but to date we will be retiring 1,097 members. This is about average for the last ten years or so and lower than last year. Hopefully, many of these will become RELAC members as well!

There is a lot of work that goes on behind the scenes here at LACERA during "March Madness." Getting newly retired members set up for payroll is a family affair at LACERA. Just about every division is involved in the process. Here's just a few of the things that go on...

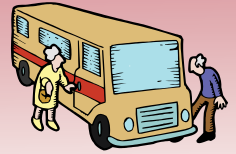
- Member Services continues to help educate our newly retired members and support our active and currently retired members. Their goal is to make sure the transition process is as smooth as possible and all of your questions are answered. Typically we see a huge spike in calls right after "March Madness" ends, as new retirees have questions and loose ends to tie up as they begin the new era in their life.
- Our Claims Processing team ("CP" as we affectionately refer to them) is busy generating estimates and processing retirement applications that come in to ensure we get retired members on payroll as quickly as possible. At the same time, CP ensures our current retirees get their monthly benefit checks on time and we respond to requests from active members. Their goal is to start our retirement benefit payment within 60 days of your retirement date.
- "CP" works hand in hand with our Quality Assurance division to make sure all of the benefits are checked for accuracy. Part of our mission to provide the promised benefit means that every single new retiree's benefit is checked for accuracy before it goes out the door.
- Our Retiree Healthcare Division diligently processes the newly retired members' healthcare applications. There is a lot of coordination that goes on with the insurance carriers to ensure that those services are ready for you when you need them.
- Administrative Services processes and mails an amazing amount of confirmation letters and forms while making sure to scan all incoming documents to your Member Document Library record so staff has access to them when they need them to assist you.
- Our Systems team is extremely busy assisting all of the divisions with their part of the process to set up the newly retired members and support our active and current members.

That's just the tip of the iceberg. Literally, every division from Financial Accounting Services to Communications has a part to play in bringing you your monthly benefit.



RV Outing Notes

Ed Clifton
Coordinator of RV Club



Thirteen rigs enjoyed our March outing at the Banning Stagecoach KOA. Since it was a new park to us, I was a little apprehensive about what we would encounter once we arrived but, not to worry, it turned out to be

a pretty nice park. If only the weather had turned out as nice as the park. Usually I am complaining about it being hot, but not this time. In fact, this time we could have used a little heat. Chilly and windy was the order of the day, every day, but at least we were not knee deep in snow as some parts of the country still are.

We also had first-time Wagonmasters but Randy and Fred handled everything smoothly and we all had a great time. Lots of good food and great friends are a good combination but, since the weather did not cooperate very well, we were not able to sit outside and "shoot the breeze" as we usually do. Maybe next time. With that thought in mind, our next outing will be on May 19-20-21, 2014 at the Flying Flags RV Resort in Buellton. The coupon was in the last newsletter. If you have lost or misplaced the last newsletter, the coupon can be downloaded from the RELAC website at www.relac.org although by the time you are reading this, the deadline to submit the coupon and money will have passed. Sorry.

We had a new couple, Elroy and Terri Morris, join us for the first time at our March outing. We hope they had a good time and will continue to come to our future outings. After our potluck dinner the 50/50 drawing was won by Linda Reyes who then donated half her winnings back to the club treasury. Thanks Linda. Following that drawing the gas card drawing was won by Fred Weinberg. Again, thanks to RELAC for the donation of the gas card.

If you have any questions or need information about our future outings, give me a call at (562) 428-3360 and I will try my best to answer them.

LACERA continued from p. 9

All of this action keeps our staff on its toes. Despite our best efforts you may experience slight delays when calling in to our Call Center or when stopping by to visit our Member Service Center at our office. Staff works very hard to get to each member as quickly as possible.

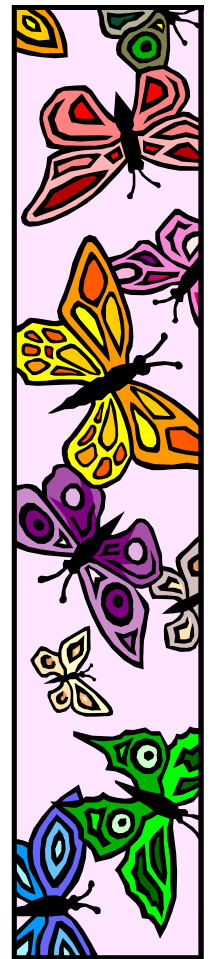
This seems like a perfect time to give a couple of plugs for our website www.lacera.com.

As anyone who has gone through the retirement process knows, there are a lot of forms that you may need to fill out. We provide these forms as part of our new retiree welcome package but sometimes you just need an extra copy. If that happens, it's often quicker to visit www.lacera.com and access our Brochures and Forms page. This page has recently been redesigned to make brochures and forms easier to find by grouping them together based on easy to understand categories. You can download and print forms or make a request to have LACERA send you a copy.

Members who like to use the computer are encouraged to establish a My LACERA account if you haven't already. My LACERA allows you to update your address, tax withholding instructions, direct deposit instructions, download your monthly Automatic Deposit Receipts, access copies of your annual 1099-Rs (for our newly retired members this is the form that replaces the W2), and very soon to be able to update your beneficiary information. It is a huge time saver performing these account maintenance procedures online vs. calling our Call Center or sending a written request.

Of course, if you are the type of person that prefers talking to a live person, our Call Center is available every weekday from 7 AM to 5:30 PM at 1-800-786-6464. You can also stop by and visit our Member Service Center which is open from 7 AM to 5 PM each weekday as well.

Well, that's it for this month. Until we chat again, I hope you enjoy every day of your retirement. You earned it!



REAL ESTATE



Purchase or refinance your Mortgage Loan with Southland and save!

- **Low Rates**
- **Flexible Terms**
- **Funding in as little as 30 days**

Purchase Options

- Financing for primary residence, second homes, and investment properties
- 15, 20, 30, or 40-year low fixed-rate Mortgage Loans
- Adjustable Rate Mortgages (ARM)
- Jumbo Loans available

Refinance Options

- You may be paying too much on your current mortgage. Take advantage of a free Mortgage review and see how much you can save!

RELAC Members
Join and receive a free gift!™

Southland
CREDIT UNION

Membership is subject to eligibility. All new accounts will be verified through ChexSystems and are subject to credit approval. Real Estate Loans are subject to credit approval. Due to current real estate and economic conditions, loan requests that exceed 80% of the property's value will require additional review and may incur higher costs. Loan funding is subject to membership eligibility and credit approval.



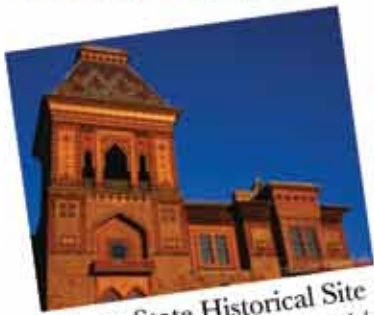
www.SouthlandCU.org • 888.906.8350



Hudson River Valley

FOR RESERVATIONS AND INFORMATION CONTACT
GREAT WESTERN TOURS * 1-800-344-7090 * 1-626-578-1161
CA SELLER OF TRAVEL #1019830-40

Hudson River Valley October 1-7, 2014



Olana State Historical Site
*photos by Hardie Truesdale,
used with permission*

Pricing - Per Person
Twin \$2295
Single \$2885

A Unique Hudson River Valley Experience

7 Day Land Tour ♦ Round Trip Airfare LAX - Newark ♦ Deluxe Motorcoach Transportation ♦ 6 Nights Hotel Accommodation ♦ Total of 14 Meals: 6 Breakfasts, 3 Lunches, 5 Dinners ♦ Escorted Program with Step on Guide Services, Taxes, Baggage Handling & Driver Gratuity

Sightseeing Includes:

- Hancock Shaker Village*
- Fenimore Art Museum*
- Baseball Hall of Fame*
- Farmers' Museum*
- Olana State Historical Site*
- U.S. Military Academy at West Point*
- Boscobel House & Gardens*
- Franklin D. Roosevelt Home & Library*
- Eleanor Roosevelt's Val-Kill Cottage*
- Culinary Institute of America*



Baseball Hall of Fame
photo by Aaron Y - used with permission

Travel Adventure Journeys

West Coast Getaway October 20-24, 2014

Princess Cruises: Catalina & Ensenada

4 Day Cruise on Golden Princess ♦ No Air Travel ♦ Includes Transfers to/from Pick Up Point to LA Pier and Return, Port Fees and Taxes ♦ **Priced from \$559 for Inside Cabin Per Person, double occupancy** ♦ Specific Cruise Categories and Locations are Based on Availability and Will be Identified at the Time of Deposit ♦ **Passport required that is valid through April of 2015**

Death Valley November 9-12, 2014

Amargosa Valley - Lower and Upper Death Valley which includes Zabriskie Point, Devils Golf Course, Ubehebe Crater, Badwater, Harmony Borax Works, Scotty's Castle, Rhyolite and Mesquite Flats Sand Dunes
4 Day Deluxe Motorcoach Tour ♦ 3 Nights Hotel Accommodations ♦ 8 Meals: 3 Breakfasts, 2 Box Lunches, 3 Dinners ♦ Tours of Amargosa Valley & Death Valley ♦ Admission Scotty's Castle ♦ Tax & Baggage Handling
♦ **Pricing: \$699.00 Per Person based on double occupancy, single occupancy \$769.00**

A RELAC discount will be deducted from all tour prices featured on this page.

All programs above feature LA Region transfers to/from airport or pier (mileage cap applies). Prices include applicable port fees, government taxes, fuel surcharges and are per person, twin sharing. Single rates are available.



Letters To The Editor

What a pleasant surprise to open your notification letter and find my name had been drawn and a check for \$25.00 was enclosed for participating in the Valentine drawing. The month of February is especially important to my wife, Jacquelyn, and I as we celebrated our 64th Wedding Anniversary on Valentine's Day. Also, my 82nd birthday is on the 26th of the month. Thank you for all the dedicated staff who work on the behalf of retirees. We members appreciate all your efforts!

James Shelton
Corona, CA

Thank you very much for my Valentine gift that I won and have received. You all made my day ... and just for your information, I have never won anything!

Nancy Brown
Mariposa, CA

I can't believe I won \$25. I am not very lucky but maybe it is my lucky year (after my 97th year). Thank you very, very much.

Rosemarie Becerra
Los Angeles, CA

What a pleasant surprise to open my mail and find a check from the Valentine's Day drawing. Can't believe I am a winner. I will use the money wisely.

Rita Pisarek
South El Monte, CA

I am one of the lucky Valentine's Day drawing winners and I am so pleased. I really enjoy reading the newsletter as well -- keeping up with fellow retirees and sadly those that have passed. Again, thank you so very much.

Ilene Kaplan
Banning, CA

What a nice surprise! Thank you for the \$25.00 (Valentine Drawing Winner).

Frank Perez
Cottonwood, CA

Dear RELAC Staff: Thank you, thank you, thank you for all the kindness you put into everything you do. Your "Sparkle" birthday card was a warm surprise indeed!

Hanako Nakamoto
Pasadena, CA

RELAC Members Gather in Cerritos and Palmdale

Photos by Jason Williams



At the Cerritos Membership Meeting the featured speaker is Dr. Erwin Fang, Assistant Chief of Ophthalmology at Kaiser Permanente.



At Cerritos Domingo Delgado was a prize winner.



The featured speaker at the Palmdale Regional Meeting was LACERA Assistant Executive Officer Robert Hill on the left. He is seen with RELAC President Dave Muir.



At the Palmdale meeting Sandra Davis won the door prize. She was guest of her mom, Inez Henry, who is at the left of the photo.

Veteran's Corner



The History of Flag Day

Flag Day was first observed in 1877 on the 100th anniversary of the Continental Congress's adoption of the Stars and Stripes as the official flag of the United States. In that year, Congress asked that all public buildings fly the flag on June 14. The idea caught on and many people wanted to participate in waving the flag. One early supporter was B.J. Cigrand, a Wisconsin schoolteacher who wanted June 14 to be known as "Flag Birthday". In 1916 President Woodrow Wilson proclaimed Flag Day as a national celebration. However, the holiday was not officially recognized until 1949 when President Harry Truman signed the National Flag Bill. Although Flag Day is not celebrated as a Federal holiday, Americans everywhere continue to honor the history and heritage it represents. The longest running Flag Day parade is held annually in Quincy, Massachusetts, which began in 1952.



Important Patriotic Dates

Mother's Day	May 11
Armed Forces Day	May 17
Memorial Day	May 26
Flag Day	June 14
Father's Day	June 15
Independence Day	July 4
Labor Day	September 1
Patriot Day	September 11
Constitution Day	September 17
Columbus Day	October 13
Veteran's Day	November 11
Thanksgiving Day	November 27
Pearl Harbor Day	December 7

The Commander to the Troops

"It is foolish and wrong to mourn the men who died. Rather we should thank God that such men lived."

General George S. Patton 1885-1945

Published in Echoes, The Bulletin for Retired, Surviving Spouses and Families. Submitted by RELAC Board Member George Hernandez.

Welcome New Members

February 2014 & March 2014

Alternate Public Defender

Scrivens, Vicki

Assessor

Rivera, George

Auditor-Controller

Morris, Gerald

Nunga, Villaflor

Board of Supervisors

Carrillo, Maria Elena

Chief Executive Office

Gallegos, Meriam

Child Support Services

Mayer, Barbara

Children and Family Services

Haywood, Margaret

Sparks, Diane

Community and Senior Services

Miller, Sandra E.

County Counsel

Kirkman, Don

District Attorney

Tucker, Patricia R.

Fire

Dull, Roy L.

Hyde, Glenda

Perkins, Lawrence F.

Health Services

Barnes, Marie

Scipio, Ruth A.

Mercado, Mary Lou

Chism, Denise D.

Church, Carmen V.

Means, Randall

Richie, Josephine

Internal Services

Feinzimer, Paul

Mahar, Idell

Smith, Pauline

Taylor, Gregory

LAC+USC Medical Center

Holguin, Raul

Tapia, Delia Lily

Mental Health

Bedell, Gwendolyn

Parks and Recreation

Flores Paul M.

Pearson, Susan

Probation

Hughley, Vicki

De Moraes, Suzanne Assis

Holder, Victor

Warren, Eugene W

Public Defender

Judge Michael

Public Health

Barsoum, Salwa

Jones, Emily

Public Library

Mendel, Phillip F.

Public Social Services

Lezcano, Alma

Langenbacher, Glee

Public Works

Khoo, Leonard

Rancho Hospital/Rehab Center

Payton, Michelle

Registrar Recorder/County Clerk

Brown, Ella M.

Sheriff

Allen, Francine

Rammerer, Charles

Sasahara, Henry

Mcintosh, Bonnie

Garrett, Constance

Johnson, Rodney

Morales, Martha

Resurreccion, Angel C.

Rosas, Esther

Sculosser, Brian

Superior Court

Kettelkamp, Norma J.

Frala, Terry

Louise, Penelope

Torregano, Darlene S.

Department Not Designated

Morgan, Shirley

Nguyen, Nho (John)

Padilla, Candelrio

Antonio, Antonieta

Ortiz, Pilar

Whitfield, Alice

Couzen, Evelyn

Stephen, Allen May

Thomas, Kerrie

New Active Working Members

Brooks, Rebecca

Cibulk, David

Delgado, Martha

Pierson, Donna

New Associate Members

Bedell, Charley

Lezcano, Misael

Pham, Bang Van

Padilla, Miriam Luz

Mary Jo, Dull

Morris, Lillian F.

Eldeiry, Farouk B.

Kirkman, Jan

Chism, Arthur L.

Russo, Gregory

Feinzimer, Cynthia Ann

Holder, Debbie

Duran, Rosa Maria

Johnson, Christine

Mendel, Rosa G.

Pearson, John

Perkins June I

Resurreccion, Teresita J.

Rosas, Edward

Taylor, Phyllis H.

Linda, Warren S.

IN MEMORIAM

This list includes retired employees, both RELAC members and non-members.

Alternate Public Defender

Levine, Ronald
Schirmer, Tamara H.

Animal Control

Freeman, Byron A.

Assessor

Brackenbury, Constance C.
Caywood, Patricia A.
Erdmann, William M.
Greenberg, Stanley
Hall, Catherine M.
Holland, Mary
Horan, Catherine B.
Richardson, Juliette
Tembreull, Sophie
Unmack, Theodore G.

Auditor-Controller

Weaver, Alfrieda

Board of Supervisors

Enoch, Loren W.

Chief Executive Office

Nevolin, Ella

Children & Family Services

Barton, Clark
Boyd, Norma
Brooks, Jacquelin S.
Gabrick, Dorothy M.
Himura-Mason, Kathleen
Hook, Marie L.
Irwin, John
Molina, Hortencia
Stewart, Kenneth
Wolpin, Pauline

Child Support Services

Elizondo, Manuela
Harper, Harvey W.

Community & Senior Services

Quan, Harold W.
Wossner, Eileen A.

District Attorney

Ashley, Pauline K.
Bellinger, Bernice E.
Borland, Dorothy
Harbinger, Richard G.
Kaplan, Randi
Massey, Arlene J.
Perales, Manuel D.
Seligman, Hyatt E.

Engineer

Burns, Thomas H.
Caceres, Ruben V.
Johnson, Gerald E.
Sheffield, Martha J.

Fire

Calcara Jr., John
Calori, Theresa
Chaisson, Donald J.

Gettig, George A.
Hewett, Louis V.
Kinney, Donald E.
Masters, Robert E.
McCann, Harold W.
Medina, George
Sonkur, Gary A.
Tegeler, Conrad L.
Toth, William J.

Flood Control

Bradley, Norman
Lynch, Hermione D.
Robb, Richard G.
Shinkle, Ivan E.

Harbor/UCLA Medical Center

Ayala, Isabel
Bautista, Adelaida D.
Branscum, Theodore A.
Fontes, Joyce L.
Franklin, Sandra J.
Gonnoud, Patricia J.
Hart, Billy J.
Howard, Napoleon J.
Johanson, Paul H.
Johnson, Virginia L.
Moore, Thelma
Nicholas, Helen B.
Pickett, Loes L.
Rossi, Laura I.
Tobias, Idella
Tucker, Thomas M.
Valbuena, Josefina

Health Plan Administration

Amarillas, August T.
Bolton, Madie
Colon, Digna
Johnson, Walter
Nerlich, William E.
Nichols, Roger D.
Richardson, Betty J.
Sevier, Rosemary A.
Sikkens, Margaret
Totoro, Marian A.

Health Services

Brunner, Sultra E.
Capen, Johnenri A.
Landau, Paul
Larsen, Marjorie F.
Serrano, Abel L.

Internal Services

Heffron, Paul
Kosciuk, Nicholas
Okubo, Hikaru
Pierchala, Anne
Ramsey, John R.
Toyota, Tatsuo
Wong, Tommy

King/Drew Medical Center

Conley, Arthur
Davis, Nellie H.
Sherry, Ida N.

LAC+USC Medical Center

Angulo, Marie D.
Armijo, Jerald M.
Cerde, Mary
Cianfrini, Rachael
Cornish, Carrie M.
Dixon Jr., Grady
Dorsey, Ruby
Gallegos, Alvino D.
Justsen, Betty A.
Kartel, Jack G.
Lopez, Consuelo G.
Mc Cowan, Margaret R.
Moore, Gloria F.
Olivas, Tedd
Orosco, Thomas
Ryan, Edwina J.
Sheldon, Erin A.

Mechanical

Grim, James E.

Mental Health

Aceves, Manuel A.
Chaplin, Don
Fleming, David K.
Grant, Jessie L.
Kinney, Lorna J.
Lynch, Charlotte M.
Van, Sandra J.

Municipal Court

Cramer, Eleanor M. (Santa Monica)
Henderson, Frances P. (Santa Anita)
Puckett, Caroline S. (Los Cerritos)
Tateishi, Mark M. (Malibu)

Museum of Natural History

Luper, Juliette F.

Olive View/UCLA Hospital

De La Pena, Barbara R.
Griffith, Trevor J.
Hensley, Kenneth R.
Maclsaac, Hildred M.
Perales, Veronica
Ross, Edith E.
Sjpurrier, Norma E.
Tindall, Elizabeth

Parks & Recreation

Brooks, Thomas L.
Granados, David C.
Hirsch, Leonard P.
Lee, Joseph J.
Lynch, Calvin L.
Meredith, Thomas D.
Preslar, Jimmy E.
Wyneken, Roy A.

IN MEMORIAM

This list includes retired employees, both RELAC members and non-members.

Probation

Cantrell, Barbara A.
Collins, Ella N.
Goodwin, John H.
Hartz, William C.
James, Colleen E.
Lacefield, Robert J.
Logan, Ruth J.
Melasky, Melvin
Mitchell, Willie I.
Perry, Charles E.
Snider, Norman E.
West, Ida M.
Williams, James E.

Public Defender

Alvarez, Manuel

Public Health Program

Coffelt, Carl F.
Howard, Charles
Johnson, Ursula C.
Lopez, Ralph
MacDougall, Evelyn E.
Magro, Stephen R.
Moulding, Thomas S.

Public Library

Barksdale, Mary K.
Williams, Ronald L.

Public Social Services

Accomando, Violet N.
Alworth, Joy T.
Anderson, Rosetta
Baker, Betty A.
Banker, Myrna
Bautista, Gloria
Boyd, Kathleen
Caroddo, Phyllis D.
Carrillo, Myriam Perez
Cook, Karolyn
Crosey, Kenneth A.
Davis, Elaine L.
Duncan, Florence F.
Elie, Brenda G.
Ennen, Richard A.
Fayle, Eileen J.
Flannigan, Pauline
Flannigan, Thomas J.
Foley, Sally A.
Gordon, Rosita M.
Hazama, Emi M.
Johnson, Celia L.
Kalwin, Teyet
Koucky, Ernest A.
Lai, Jenny
Lenart, Doris K.
Madrigal, Linda M.
McCoy, Alice H.
Mosca, Frank J.
Mosley, Rosenna C.

Pickard, Anita M.
Regalado, Rose R.
Rogers, Donald G.
Rogers, Meredith A.
Rosenfeld, Brenda D.
Sanders, Iola M.
Slotnick, Faye
So, Jim
Venezia, Edna
Ward, Velma L.
Williams, Ray V.
Yeh, George

Public Works

Bjornsen, Neil
Chustz, Joseph D.
Docherty, H. G.
Eberhardt, Robert H.
Fleming Jr., Charles F.
Gaitan, David M.
Guyovich, Donna L.
Larouche, Joseph A.
Love, Charles R.
Lugo, James W.
Lynch, Jeremiah J.
Magill, William N.
McLain, Ernest R.
Mosher, Donald H.
Moten, Charles E.
Royston, Stevell
Rubin, Melvin S.
Taylor, Cecil E.
Turner, Paul R.
Wildman, Arlene

Rancho Los Amigos Hospital

Curren, Rose
Davis, Belle
Guerrero, Eleanor
Johnson, Bobby N.
Moxham, Robert F.
Pratt, Mary K.
Scott, Lucille M.
Swenson, Shirley M.
Williams, Billye J.
Wolf, Richard J.

Reg.-Recorder/County Clerk

Scates, Dorothy L.
Spreitzer, Karl R.

Regional Planning

Buscaino, Stephen A.
D Sa, Estolan A.
Sweet, Kenneth B.

Sheriff

Britton, Dora A.
Burluson, Bruce D.
Colleran, Grace M.
Cooper Jr., David S.
Corcoran, Brian P.
Cornell, Dennis K.

De Bry, Robert
Edner, John L.
Fisher, Sharon D.
Freeman, Dell W.
Hall, Edward
Hall, Gordon N.
Hayes, Lee W.
Hopkins, Gene E.
Hough, Harold J.
James, Joseph P.
Julian, Courtney A.
Lanier, Luther N.
Leon, Enrique P.
Luzzi, Michael P.
Maletta, John L.
Monico, Edie J.
Moya, Maria V.
Nursall, Thomas J.
Orosco, Richard B.
Peck, Lagene L.
Poole, Melvin R.
Price, Walter
Rakowski, Frances H.
Ramos, Mary L.
Roach, June L.
Rodriguez, Raul M.
Rodriguez, Teresita C.
Shileikis, Mary J.
Stone, David L.
Talley, Brenda A.
Walsh, Gail A.
Zupa, Anthony E.

Superior Court/County Clerk

Binns, Evelyn
Bloch, Pearl
Fee, William A.
Henderson, Louise
Nolan, Eliria
Prestby, Daniel J.
Rayvis, Cynthia
Schaffer, Benson
White Jr., J. D.

Treasurer and Tax Collector

Diffey-Siegel, Dorothy
James, Rosetta H.
Murray, June H.
Ridley, Lois J.

Women's Hospital

Ruiz, Lucio F.
Soparpun, Natamnuy

Department Not Designated

Griffith, Eugene S.
Harlow, Harry W.
Powers, Katharine A.



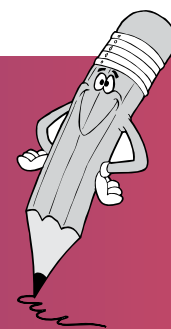
RETIRED EMPLOYEES
of LOS ANGELES COUNTY
1000 South Fremont Ave. Unit 15
Alhambra, CA 91803-8802

Return Service Requested

NON-PROFIT
U.S. POSTAGE
PAID
PERMIT #66
PASADENA, CA

General Membership Meeting

Mary K. Rodriguez, Chair, Program Committee



TUESDAY, JUNE 17, 2014

South Coast Botanic Garden

26300 Crenshaw Blvd.
Palos Verdes Peninsula, CA
310 544-1948

9:00 a.m. – Complimentary Refreshments
10:00 a.m. – Meeting Begins

**Featuring
Dr. Frank Meza**

Assistant Medical Director
Southern California Permanente Medical Group
"Prescription Drug Interactions"

Retiree Information

DOOR PRIZES

Please bring your RELAC Membership Card



Following the meeting members are welcome to tour the Garden at no cost.

IMPORTANT!
*Are you moving?
Did you change your name?*

Cut out the address portion of this newsletter, correct it and mail to:

RELAC
1000 S. Fremont Ave.,
Unit 15 Alhambra, CA
91803-8802 or
Phone:
(800) 537-3522
(626) 308-0532
Fax: (626) 308-2901
Email:
admin@relac.org
website:
www.relac.org

Note: It is important that you mail this to RELAC or contact RELAC by phone as we **DO NOT** receive your address change from LACERA.

Directions

South on 110 Fwy
Exit on Pacific Coast Highway (PCH)
West (right) on Pacific Coast Highway
South (left) on Crenshaw Blvd.

If coming from the Northwest on PCH
turn South (right) on Crenshaw Blvd.
Garden is on the left.

