



RELAC *newsletter*

Over 50 Years of Dedicated Service to L.A. County Retirees

July/August 2013 Vol 48-4

President's Message

by Bill de la Garza



Dear Friends,

For the purpose of sharing L.A. County retirement information and enjoying renewed acquaintance with our RELAC members who live in the Las Vegas, Henderson and surrounding areas, RELAC held a Regional Activities meeting and luncheon on May 30th at the Plaza Hotel in Las Vegas. Let me tell you, folks, it was a great meeting with 130 RELAC members and their families attending. Because of the arranged low room rate of \$33 per night many members who live in Los Angeles and neighboring counties made the event a mini vacation and also enjoyed all of the activities that Las Vegas has to offer. Most important they got the opportunity to see and chat with many of their past friends and co-workers.

We had two very informed speakers who brought retirees up to date with two important issues, namely our retiree pension and medical plans. They were Kirby Bosley, Senior Vice President of Aon Hewitt, and Gregg Rademacher, Chief Executive Officer of the Los Angeles County Retirement Association (LACERA). Ms. Bosley's consulting firm provides medical consultant services to LACERA. Her presentation focused on President Obama's Affordable Care Act and what effect it may have on LACERA's Medical Plans. She assured those present that LACERA's health plans will not be significantly affected. Mr. Rademacher's presentation centered on a history of LACERA's pension plans and other interesting topics. Both speakers comforted our members by indicating that our pension and medical plans were doing well. Both speakers were very well received.

Our attendees also enjoyed the cash raffle and the many good door prizes. Overall it was a great afternoon with informative presentations, a good lunch and the many door prizes. I would like to recognize and thank Diane Sandoval and her Regional Support Committee for a job well done in planning this event. Read your RELAC newsletter and if you get the chance to attend one of our meetings or recreational events, I'm sure that you will find it enjoyable.

My retiree friends, if like me you are from the old school and a Frank Sinatra fan I would like to share with you a radio program that I enjoy listening to every Sunday morning. It's called Sundays with Sinatra. It's on at 10:00 am – 12:00 noon on FM radio station 88.1.K Jazz. Two great hours of all Sinatra past and present. Hopefully it will bring some pleasure to you.

I wish you and your family good health and an enjoyable retirement. I leave you with two suggestions: (1) See your doctor and get a regular EKG and stress test. (2) Read your RELAC Newsletter. As customary, I leave you with this thought:

He who can take advice is sometimes superior to those who give it.

Confucius



Inside the Newsletter

Legislation

Dave Muir describes important bills which relate to public employee pensions and which are under consideration in the California Legislature. These are bills which the RELAC Board of Directors has voted to support. The descriptions of the bills can be found on **page two**.

RELAC Board Election

The Board of Directors has selected a slate of recommended candidates to fill the five open Board of Director positions in the forthcoming election. See **page two** for the names of those named to the slate and information on how RELAC members can get their names placed on the ballot as candidates for these positions.

Annual Picnic

The picnic is all planned and scheduled for October 5 at Santa Fe Dam. You won't want to miss this big event featuring games, musical entertainment and good food and drink. All the details and the registration form will be found on **page three**.

Day at the Races

Speaking of big events, arrangements have been made for a RELAC day at the races at Santa Anita. There will be special accommodations for our group, good food and, of course, horses running. See **page five**.

Investments Board Action

In her article on **page four** Diane Sandoval, the retiree representative on the LACERA Board of Investments, reports on an important action taken by the Board with respect to the Star Cola fund. Her vote was the only one in opposition and she explains why.

Dave Kalinger's 100th Birthday

Dave is the Emeritus RELAC Board Member. All of his friends and colleagues are invited to his 100th birthday party on July 26. Find out where and the time by going to **page nine**.

RELAC BOARD OF DIRECTORS ELECTION COMING UP

by Ed Morris
Chair, Bylaws/Nominations/
Elections Committee



At its business meeting on May 23, 2013, in accordance with the Bylaws, the Board unanimously endorsed the following slate of five candidates to serve three-year terms on the RELAC Board of Directors beginning January 1, 2014:

- Bill de la Garza
- Steve Duron
- Martin Golds
- Judy Hammond
- Dave Muir

We are pleased to welcome two new volunteers who are on the slate -- Judy Hammond who retired in March 2011 from the County Chief Executive Office as the Director of Public Affairs, and Steve Duron who retired from the Department of Parks and Recreation after 44 years of service.

In addition, Ray Guyovich resigned from the Board of Directors and Simon Russin was appointed to fill his position for the balance of his term which will end in December 2014. Ray was a valuable member of our Board and was the coordinator of our very successful picnics, award and installation luncheons and regional meetings in Las Vegas for many years. He was a very active Board Director and a great volunteer.

All members of RELAC are welcome to compete as candidates for Board membership by filing a petition signed by not less than twenty-five (25) RELAC members. The signed petition, along with a letter of acceptance by the nominee, must be received by the RELAC office no later than July 31, 2013. Petition forms are available at the RELAC office.

Request for Emailed Newsletter

Please send me future issues of the RELAC Newsletter by email only until further notice

Name _____

Address _____

Email Address _____

Mail to: RELAC
1000 S. Fremont Ave., Unit 15
Alhambra, CA 91803-8802

Or Email: admin@relac.org

RELAC Works to Secure Legislation Protecting Retirement Benefits

by Dave Muir
Chair, Legislation Committee



Assembly Bill 822, currently pending in the State Legislature, would provide important protections against unfair and misleading pension reform proposals. RELAC's Legislation Committee is working diligently to make sure this bill passes the Legislature and is signed by the Governor.

AB 822 would impose new requirements for ballot measures that seek voter approval of pension reform proposals. The governing body that employs workers subject to the proposal would be required to obtain a statement from an independent actuary, certified by the Society of Actuaries, as to the impact the proposed reform would have on future annual costs. That statement would be included in the sample ballot that is mailed to all voters. In addition, the governing body would have to announce the future annual costs at a public meeting at least two weeks prior to the election. Further, a pension reform measure on the ballot could appear only at an established general election.

AB 822 is in response to problems that occurred recently with pension reform proposals submitted to the voters based on flawed financial cost estimates. At a recent Legislative Committee hearing on AB 822, the Committee's consultant noted that the City of San Diego estimated the cost for implementing Proposition B - requiring new employees to go into a 401(k) plan - would be \$54 million over the first three years; but based on first year costs, it is likely the estimate was grossly understated - by a factor of three.

The requirement that proposals be submitted to the voters only at an established general election is to prevent abuses like the one that occurred in the City of Bell. The voters adopted a city charter in 2005 at an election scheduled just five days after Thanksgiving. The charter proposal was the only item on the ballot, and was promoted by city officials as a change that would give the city more control. The ballot language failed to mention that the change also gave the city council the ability to set council members' salaries. We all know what happened there! In a city with over 36,000 residents, less than 400 voters turned out to vote. The Legislation Committee is closely monitoring AB 822.

AB 822 successfully passed in the Assembly and is now pending in the Senate. We will write letters to the Senate Committee on Public Employment and Retirement when the bill comes before that committee for a hearing, and to the Governor when the bill appears on his desk for signature, urging passage of this important legislation.

Another bill pending in Sacramento that we are supporting is AB 382 which would allow LACERA's Investment Board to discuss certain investments in closed session when discussion in open session would place LACERA at a competitive disadvantage.

RELAC's Legislation Committee continues to monitor developments in Sacramento, and at the federal level, to make sure our voice is heard on legislative proposals that are important to retirees.

Note: In Memoriam normally is on pages 14 and 15. In this issue it is on pages 13, 14 and 15.

RELAC ANNUAL PICNIC

THE BIGGEST EVENT OF THE YEAR \$15.00 INCLUSIVE

OCTOBER 5, 2013

10:30 A.M. to 3:00 P.M.

Food, Fun, Entertainment
Raffle Drawing

ENTERTAINMENT
Provided by the Hyland Band
with Jennifer Gates

CATERED LUNCH -PICNIC SERVICES

LUNCH SERVED 11:45 am

- St. Louis Style Ribs
- Tender Chicken Breasts
- Hot Dogs
- Baked Beans
- Fresh Fruit (best in season)
- Cole Slaw
- Potato Salad
- Rolls & Butter
- Gourmet Cookies
- Brownies
- All the Soft Drinks &
Beer you can drink

BRING A
FOLDING CHAIR
(If you want to sit
closer to the music)

BINGO
(Back by Popular Demand)

**DRAWINGS
...AND MORE**

HORSESHOE TOSS

**GREAT
PRIZES**

SANTA FE DAM - Recreational Area #5
15501 E. Arrow Highway, Irwindale
Free Parking

**MEMBERS &
ADULT
GUESTS**

~ Adults Only ~

ANNUAL PICNIC REGISTRATION FORM

~ Adults Only ~

Member _____

Address _____

City _____ State _____ Zip _____

Guest(s) _____

(additional guests – attach list)

No. of tickets _____ @ \$15.00 ea. = \$ _____ Total

Mail to: RELAC
1000 So. Fremont Ave., Unit 15
Alhambra, CA 91803-8802

Info: (626) 308-0532
(800) 537-3522
Email: admin@relac.org

Present RELAC Membership Card at entrance to park. NO admission without advance registration.

RSVP by September 13, 2013

Welcome New Members

April & May 2013

Investments Board

by Diane Sandoval
Retiree Representative,
LACERA Board of Investments



At the Board of Investments Meeting of April 10, 2013, LACERA's actuary, Milliman, presented the results of the Actuarial Valuation as of June 30, 2012. Milliman reported LACERA's funded status was 76.8% as of June 30, 2012 - a decrease from a year ago (June 30, 2011) when Milliman reported LACERA's funded status was 80.6%. The Actuarial Valuation was adopted on an 8-1 vote and the Board of Investments directed LACERA's CEO to communicate the results to the Board of Supervisors with a recommendation to implement the new employer and employee rates no later than September 30, 2013. The actuary projects the expected annual employer contribution for the fiscal year 2013/2014 to be \$1.4 billion.

In case you are wondering who cast the dissenting vote – it was I. Why did I vote no? My objection stems from the inclusion of the STAR Reserve (approximately \$614 million) as part of the valuation assets. If you read my article in the last issue, I explained that the valuation assets represent the assets the actuary compares to the plan's liabilities when calculating contribution rates and determining the plan's funded status. Including the \$614 million STAR Reserves as a valuation asset increased the funding ratio by 1.2% and lowered the employers' Unfunded Accrued Actuarial Liability (UAAL) contribution rate by .53%. While the differences are not significant the employer (**in my opinion**) is underpaying its annual contributions for the fiscal year (July 1, 2013-June 30, 2014) and not reporting the correct funded status of the plan (75.6% without STAR) vs.(76.8% with STAR).

Please don't be alarmed with my comments above – the buck ultimately stops with Los Angeles County! I know and understand Los Angeles County is responsible for the plan's liabilities not funded through employer contributions and portfolio earnings. Our pension plan is not in jeopardy; I simply held a different opinion and admit I tend to be conservative in my views. Furthermore, if in the future we experience high inflation, the Board has the discretion to grant additional STAR COLA benefits as indicated. In

continued on p.13

Chief Executive Office

Zimmerman, Martin K.

Children & Family Services

Racu, Mary

Smith, Marian

Fire

Ealey, James C., Sr.

Harbor/UCLA Medical Center

Vinzon, Riza Alma

Health Services

Halls, Donna L.

Llamas, Ralph

Ortiz-Marroquin, Miguel

Patterson Drake, Honor Rae

Human Resources

Sims, Janice Y.

LAC+USC Medical Center

Coffer, Nancy L.

Edu, Amor Pineda

MLK, Jr. Medical Center

Wilson, Michael W.

Mental Health

Quinney, Roger

Washington, Alfreda J.

Probation

Duckworth, Darryl

Public Social Services

Cochrane, Ida F.

Reid, Bernita T.

Public Works

Cook, Arthur B.

Martindale, Herbert L.

Registrar-Recorder/Co.Clerk

Bishop, Dona

Sheriff

Whittouck, Ramona

Superior Court

Sanford, Carmen

Department Not Designated

Cadena, Diego

Monterrosa, Maria P.

New Active Working Members

Child Support Services

Barnes, Andrea C.

Hamilton-Causey, Vernida

Sabag, Cathy D.

Children & Family Services

Lewis, Betty M.

Verceles, Sergio

Community & Sr. Services

Curry, Claudia

Michel, Andrea

Odamitten, Tsotso

Wolfe, Ellie K.

Health Services

Mondy, Leslie L.

Internal Services

Herlache, Daniel

Salihiue, M.R.

LACERA

Davis, Allene

Probation

Nelson, Debbie A.

Public Library

Love, Fannie J.

Public Social Services

Bautista, Patricia

Campuzano, Sol-Angel J.

Oghenekohino, Lawrence

Tekie, Tegest

Registrar-Recorder/Co.Clerk

Anyiwo, Emmanuel C.

Sheriff

Coyne, James E.

Harn, Wendy R.

Leyva, Raymond

Treasurer/Tax Collector

Rubio, Fernando Jr.

New Associate Members

Arellano, Sandy

Clark, Roslyn

Cook, Johnnie G.

Duckworth, Linda

Halls, Fredrick A.

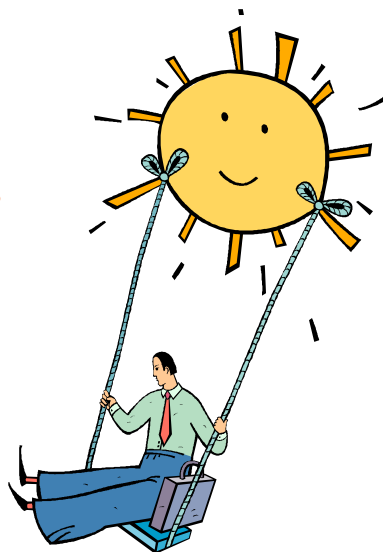
Martindale, Terry L.

Miller, Kel E.

Monterrosa, Pedro O.

Drake, Aaron K.

Wilson, Geneva L.



RELAC DAY AT THE RACES -- SANTA ANITA PARK

by Mary K. Rodriguez
Chair, Recreation Committee



Hello everyone,
Good News!

It is time to return to SANTA ANITA PARK to enjoy another fun "Day at the Races". This event is always enthusiastically attended by our members. All enjoy the day and have a lot of fun. The food is always great too.

We will again be seated in the Sierra Vista Terrace. This is a prime location which offers a great view of the track. The date is Thursday, OCTOBER 10, 2013. The cost is \$35.00 per person (RELAC supplements the ticket price). Your ticket includes park admission, valet parking, a racing program (available just after you go through the entrance gate), and a great lunch buffet which includes soft drinks and dessert.

Please fill in the coupon and send your check to RELAC as soon as possible. The reservation deadline is Tuesday, October 1, 2013. Your tickets will be mailed to you on October 3, 2013.

Our space in the Sierra Vista Terrace is limited so don't be left out. Hope to see you there!

RELAC DAY AT THE RACES

Santa Anita Park
Thursday, October 10, 2013

Name: _____

Address: _____

City/State/Zip: _____

Telephone Number: (_____) _____

Number of Tickets _____ @ \$35.00 each

Total Amount Enclosed = \$ _____

Enclose a check for your total payable to RELAC and mail to:
RELAC

1000 South Fremont Avenue, #15
Alhambra, CA 91803-8802

Must be received by October 1, 2013

VEHICLE LOANS

RELAC Members

Join and receive a free gift!*

Vehicle Loans

as low as

1.99

%
APR*

- Loan approval within minutes
- New Vehicle Loan Rates as low as 1.99% APR*
- Rate includes a discount of .25% for automatic payments from your Southland Checking
- Repayment terms up to 7 years
- Finance up to 120% of the purchase price with tax, license, and insurance

Southland
CREDIT UNION



Membership is subject to eligibility. All new accounts will be verified through ChexSystems and are subject to credit approval.
*APR=Annual Percentage Rate. Rate quoted as of 6-1-12 for a 72-month term. Rate includes a .25% discount for autopay from a Southland Checking or Money Market Account. The monthly payment is \$14.75 per \$1,000 at 1.99% for 72 months on new vehicles. Other rates may apply based on your individual credit profile. Loans made subject to credit and vehicle qualification, other fees and conditions may apply. Rates are subject to change without notice.

www.SouthlandCU.org • 800.426.1917

Recruiting New RELAC Members

by Jason H. Williams, Chair
Membership/Recruitment Committee

In the May/June edition of RELAC's Newsletter, I announced that our committee's recruitment goal for 2013 is 1,000 new members (800 retired and 200 active members). Achieving this goal is extremely important to RELAC since our membership numbers decrease each month primarily due to deaths. RELAC's maintaining a large membership is especially important because of **RELAC's primary mission** -- to enhance, maintain and protect Los Angeles County retirees' pension and medical benefits with respect to legislation at County, State and Federal levels.

Each month our committee will continue attending seminars and conferences sponsored by the Los Angeles County Management Council. At each of these events, RELAC has been given a few minutes on the agenda to (1) inform active LA County employees about the benefits of joining RELAC while they are still working, and (2) recruit new members. RELAC would like to thank the LA County Management Council and its leadership for granting RELAC access to its members at these events.

Recruitment 101

To aggressively recruit new retired members, our committee is planning a major informational mailing in early October 2013 to all 54,000 Los Angeles County retirees. All current RELAC members will be included in this mailing. The committee's purpose for this mailing is to present a strong, compelling argument that all LA County retirees should join RELAC because of our **mission**, stated above, and the **excellent benefits** we offer our members. These benefits include a \$50,000 personal accident insurance policy (no cost for first year of membership) and supplemental insurance available to members at exclusive discounted group rates and not available elsewhere. Examples are dental, health, vision, pre-paid legal, pet, homeowners/renters, ID theft shield, auto/motorcycle/RV/watercraft and hearing aid insurance. RELAC's website, www.relac.org, has detailed information on these benefits.

Staying Connected

In addition to the above benefits, RELAC helps our members stay connected with each other by conducting golf tournaments for men and women, hosting "Day at the Races" group parties at Santa Anita Racetrack, providing casino bus trips, RV outings, annual members picnic, LA Dodgers 4th of July fireworks baseball games, local and regional membership meetings covering pension and medical updates, health, well-being and other important topics, an Annual Recognition Luncheon and local and world-wide travel opportunities available through a travel agency.

Finally, one of our RELAC members spoke to me during RELAC's Regional Luncheon Meeting on May 30, 2013 in Las Vegas. The member said that he and other RELAC members actively encourage their former co-workers to join RELAC but they don't receive recognition for their efforts. Well, on behalf of our Board, I want to thank all RELAC members who recruit new members! (Incidentally, five minutes after this gentleman spoke to me he won several RELAC door prizes!)



Regional Activities and Special Events

by Diane Sandoval
Chair, Regional Support/Special Events Committee

It was a pleasure seeing those who attended our regional luncheon meeting at the Plaza Hotel in Las Vegas. Be sure to read the President's Message on the front page for a brief overview. Our committee strives to schedule meetings wherever a large number of members reside. If you were unable to attend our meeting in Las Vegas perhaps you will be able to attend future meetings/events.

MARK YOUR CALENDARS!

Huntington Beach Regional Meeting – Thursday, July 18, 2013

Our next scheduled regional meeting is in Huntington Beach on **July 18, 2013**. We are returning to the Huntington Beach Library and Cultural Center, 7111 Talbert Avenue, Rooms C/D, Huntington Beach, CA 92648.

Our speaker is Captain Will Pryor, Los Angeles County Fire Department. Captain Pryor will speak about "Safety in the Home and Disaster Preparedness". Doors open at 9:30 a.m. and the meeting will begin at 10:00 a.m. Complimentary refreshments will be served.

A LACERA representative will be available to answer your questions regarding your pension and medical benefits. I hope you will plan to attend. In case you need additional coaxing – there will be door prizes; perhaps you'll be one of the lucky ticket holders.

Annual Picnic –

Saturday, October 5, 2013

Cost per person is the same as last year - \$15.00. You'll be pleased to learn that the Barbeque ribs are back!! Look for the flyer to send in your reservation and check today. It's on page three. Deadline to send in your reservations is **September 13, 2013**.

Annual Recognition Luncheon–

Thursday, January 16, 2014

I'll provide details in our next issue of our newsletter and will include a reservation form for your convenience. Location is the same as this year's luncheon – Almansor Court in Alhambra.

If you have suggestions on topics of interest or you'd like RELAC to consider holding a meeting in your area, please contact the RELAC Office. Our goal is to identify locations where a large number of our members reside. We are always interested in hearing from you and will do our best to accommodate your requests. Enjoy the summertime, stay cool and if you're traveling – travel safely!



Featured speakers in Las Vegas, on the left Kirby Bosley, Senior Vice President, Aon Hewitt and Greg Rademacher, CEO, LACERA.

RELAC NEWSLETTER

Vol 48 - July/Aug 2013
Number 4

Retired Employees
of Los Angeles County
1000 S. Fremont Ave.
Unit 15, Alhambra, CA
91803-8802
(626) 308-0532
(800) 537-3522
Fax (626) 308-2901
E-mail: admin@relac.org

Board of Directors

President

Bill de la Garza

Vice President

David L. Muir

Secretary

Mary K. Rodriguez

Treasurer

Edward C. Morris

Past President

Greg Walia

Members

Mary Lou Bangar

Donald Fandry

Martin Golds

J. P. Harris

George Hernandez

David L. Muir

Alice Prouty

Simon Russin

Diane Sandoval

Jason H. Williams

Emeritus

Dave E. Kalinge

Editor: Martin Golds
Copyright © 2013 by
RELAC This information
presented in your RELAC
Newsletter is believed to
be from reliable sources.
However, no responsibility
is assumed by RELAC or
the writers for inaccuracies
in the articles as published.

Office Hours

9:00am - 4:00pm

Monday - Thursday

Closed Friday, Saturday,

Sunday &

Public Holidays

website:

www.relac.org

Golf News

by *Gil Sandoval*
RELAC Golf Director



Santa Anita Golf Tournament June 10, 2013

Art Moronez had his best golf day with RELAC as he shot the best net round to win the "C" flight with a gross 98, netting a 62 for the win. 2nd place was a close race as Ron Malmfeldt edged out Ron Finsuth by one stroke with a net 69.

The "B" flight was a closer match as Luis Martinez Won with a net 66.. He was followed by Brad Cakra at net 68 for 2nd and Jim Guild in 3rd at net 70.

Michael Hernandez won the "A" flight with a net 69. Jim Noyes edged out Credy Hart in a card off to place 2nd as they both had net 71. Credy had the low score of the day with a gross even par round of 72, taking 3rd.

Kathy Malmfeldt brought her friend Cecilia Worchester who won with a net 69 edging out Kathy by one stroke. Rita Hart took 3rd with a net 75.

We a nice turnout with 52 players in this tournament.

La Mirada Results:

"A" Flight Winner (19 and under)

1 st Michael Hernandez	(69)
2 nd Jim Noyes	(71)*
3 rd Credy Hart	(71)

"B" Flight (20-27 Handicaps)

1 st Luis Martinez	(66)
2 nd Brad Cakra	(68)
3 rd Jim Guild	(70)

"C" Flight (28 up Handicap)

1 st Art Moronez	(62)
2 nd Ron Malmfeldt	(69)
3 rd Ron Finsuth	(70)*

Ladies

1 st Cecilia Worchester	(69)
2 nd Katy Malmfeldt	(70)
3 rd Rita Hart	(75)

*Winner in a card off.

Closest to the Pin on Par 3's

Men # 4-George Sims
8-Felix Cavillo
12-George Sims
15-No Winner

Women # 4 - Cecilia Worchester
8 - Cecilia Worchester
#12-- No Winner
#15-- No Winner

NEXT TOURNAMENT - Monday, Aug. 05, 2013

Los Verdes Golf Course 8:00 a.m. start

Entry Deadline: July 12, 2013

RELAC Golf Entry Form



Los Verdes Golf Course
7000 West Los Verdes Drive
Rancho Palos Verdes 90275

Monday, August 5, 2013

8:00 a.m. Start

Please Print

1. Name _____

Address _____

City _____ Zip _____

Phone _____

Fees: \$32.00 PER GOLFER - CART EXTRA

If possible, place me in a foursome with below listed golfers. Addresses of all golfers MUST be included.

If possible, we would prefer an
Early _____ Late _____ starting time.

2. Name _____

Address _____

City _____ Zip _____

Phone _____

3. Name _____

Address _____

City _____ Zip _____

Phone _____

4. Name _____

Address _____

City _____ Zip _____

Phone _____

NOTE: Only ONE GUEST per member.
Enclose check for ____ golfers @ \$32 per
Golfer. Make checks payable to RELAC. Mail
entry to RELAC, 1000 So. Fremont Ave., #15,
Alhambra, CA 91803-8802

Entry Deadline

July 23, 2013

**ALL CHECKS MUST BE
IN RELAC OFFICE**

For Office Use:

Date Rec. _____ Amt.\$ _____

Ck# _____

Members Spotlight



An Invitation from Sisters Together in Retirement (STIR)

VIEJAS INDIAN CASINO ANNUAL FUND RAISER

On October 22, 2013, Sisters Together in Retirement (STIR) will be holding their 12th annual trip to Viejas Indian Casino located in the Cleveland National Forest, San Diego. We will be traveling to the casino via bus from two locations, Hawthorne and Lakewood. The Hawthorne bus will depart at 9:00 a.m. sharp and the Lakewood bus will depart 15 minutes later. Return arrival time at Lakewood is 7:00 p.m. and return arrival time at Hawthorne is 7:30 p.m. The cost for the trip is \$12.00 per person and includes a continental breakfast, games and prizes.

For more information please contact Wivory Brandle at (323) 296-2370 or Katie Cochran at (310) 608-0687.

Department of Beaches and Harbors Offers Free Parking Passes to Seniors!

ATTENTION SENIORS! To obtain a free daytime beach parking pass (good on non-holiday weekdays only) you must be at least 62 years of age. Here's what you do. Just send a copy of your current driver's license, vehicle registration and current address if different than the one on your driver's license to the Los Angeles County Department of Beaches and Harbors, Attention Senior Parking Passes, 13837 Fiji Way, Marina del Rey, CA 90292. It takes about two to three weeks to process and receive your pass in the mail. No passes are issued over the counter. You may enjoy your free parking pass when visiting beaches in Malibu, Pacific Palisades, Venice, Playa del Rey, Marina del Rey, Torrance and San Pedro. For more details call (310) 305-9503.



Activities of a Retiree

by RELAC Member Lucille Provine McGuire

"The Benefits of Activities for Seniors" by Lee Gruen in the May/June RELAC Newsletter was of special interest to me, Past President of RELAC, 1989.

First, I have always been pleased that it was a privilege during my term as RELAC's President that the Board of Retirement took action in regard to the COLA benefit we have been receiving since 1990. In August of 1989 as President, on behalf of the RELAC Board of Directors, I directed a letter to the Board of Retirement petitioning that Board to implement a supplement cost-of-living adjustment for current eligible County retirees, as authorized by the County Employees Retirement Act of 1937.

I have been a RELAC member since I left my position as Senior Administrative Secretary to Dr. C. C. Carpenter, Chief Deputy County Superintendent of Schools, on November 14, 1966, at the time of the death of my then husband, Edward H. Bullard, Chief Clerk in the Auditor's Office, Purchase Order Payments. My RELAC dues as a spousal member at that time were only 10 cents per month. I took reciprocal retirement and employment as Administrative Secretary for the City of Temple City at that time.

I was later married to Jack Provine who had retired from the Parks and Recreation Department and was a member of the RELAC Board. While he was on the Board I also attended Board meetings and assisted on committees. When he suffered a minor stroke and found it difficult to speak, he took leave of that Board and I was appointed to serve in his stead. We attended a Regional Meeting in Hemet on Thursday, February 26, 1987 and after lunch Jack felt ill and was taken to the hospital there. He suffered a stroke and passed away the following Monday. I remained on the Board and was elected President for 1989. By special request of the Board, I used two issues of my President's Message to develop material that would be helpful to surviving spouses to deal with grief and to cover necessary legal and financial concerns when losing a loved one.

Upon moving to Santa Maria in 1990, I had to leave the Board but found many ways to volunteer as an Election Inspector, as a volunteer in Hospice and service in my Mobile Home Park.

I also approached the RELAC Board in 2002 to suggest a first ever Regional Meeting over 100 miles out of the Los Angeles area and worked with Mary Lou Bangar and Alan Chancellor to hold it at the Santa Maria Inn. That luncheon meeting was most successful and we held one there the following year as well. The year after we went further north, near Cuesta College. After that RELAC went much farther for Regional Meetings – all the way to Las Vegas, and the rest is history.



Letters To The Editor

Your RELAC Newsletter is great except when I see the name of a respected friend and fellow worker listed in the "In Memoriam" section. I retired on March 31, 1980 and will retire from a School District, where I work with students on issues of tobacco and other drugs -- both prevention and cessation. My main reason for this note is to sadly acknowledge the passing of Ed Vincente, formerly with the Probation Department. Ed had a political career, probably unmatched by any former Los Angeles County employee. He was a School Board Member and the Mayor of Inglewood, a two-term California State Assemblyman and a two-term State Senator. This man was a former All American Football Player from the University of Iowa and an exceptional Probation Officer. This charismatic man will be missed by all who knew him.

Jerry Leavitt
Santa Paula, CA

What a surprise -- a \$25.00 Valentine Gift! Thank you.

Ward Yarrow
Florence, OR

Thank you so very much for the \$25.00 check from the Valentine Drawing. It was such a great and wonderful surprise. I am very grateful. Thank you. I have been having trouble with my eyes since January but showing improvement now and can see much better without tearing as much. Hello to everyone at RELAC. I really look forward to the newsletter.

Grace Sanwo
Sacramento, CA



RV Outing Notes

Ed Clifton
Coordinator of RV Club



Fourteen rigs enjoyed our May outing at the Chula Vista RV Resort in Chula Vista just south of San Diego. The first two days (Sunday and Monday) were very warm, hot even, but the rest of our stay was typical San Diego weather -- cool, kind of breezy and a little overcast. It was great to just sit outside and enjoy the weather. All in all, we had a great time. Our Wagonmasters, Mike, Bob and Linda Reyes, did a great job of keeping everything under control and going smoothly. Lots of card playing was enjoyed by some of us while others just enjoyed some idle time and catching up on how our other members are doing. A new couple, Peter and Joanne Hansen, joined us for the first time. We hope they become regulars.

The gas card drawing was won by Paul Ladafoged. Thank you RELAC for the donation.

Our next outing will be at the same place, the Chula Vista RV Resort, on September 9-10-11, 2013 with the early day being September 8, 2013. The coupon will follow. If you have any questions give me a call at (562) 428-3360.

R.V. CAMPOUT RESERVATION

CAMPGROUND: Chula Vista RV Resort
460 Sandpiper Way
Chula Vista, CA

DATES: September 9,10,11, 2013
Early Day - September 8, 2013

Names: _____
(Last) (Retiree) (Spouse)

Address: _____
(No.) (Street)

City: _____
(State) (Zip)

Telephone: () _____

DEADLINE: THURSDAY, AUGUST 1, 2013

COST: \$138.30 FOR THREE DAYS

MAKE RESERVATIONS FOR ADDITIONAL DAYS THROUGH PARK AT \$45.10 PER DAY PHONE: (619) 422-0111

Please make checks for 3 days (138.30) payable to Norman or Norida Nelson and mail to Wagonmaster:

Norman or Norida Nelson
15057 Sage Street
Hesperia, CA 92345
Phone: (760) 244-0875

Motor Home _____ Trailer _____ Length _____

Adventure Travel Journeys

GREAT WESTERN TOURS
1-800-344-7090 * 1-626-578-1161



West Coast Rail & Sail September 19, 2013

*Crater Lake - Scenic Oregon Coast - Vancouver
Princess Cruise*

- ★ 10 Day Rail, Deluxe Motorcoach & Cruise Tour
- ★ No Air Travel
- ★ One Way Rail Over Night L.A./Klamath Falls
- ★ 3-Nights on the Coral Princess
- ★ 5-Nights Hotel Accommodations
- ★ 21 Meals: 9 Breakfasts, 5 Lunches, 7 Dinners
- ★ Priced from \$2299 Per Person - Twin Sharing

Black Hills of South Dakota September 28, 2013



*Mt. Rushmore - Deadwood - Crazy Horse
Memorial High Plains Western Heritage Center
Custer State Park - Tate & Journey Museums*

- ★ 9 Day Deluxe Motorcoach Tour
- ★ Admissions & Sightseeing per Itinerary
- ★ Professional Tour Manager Throughout
- ★ 8 Nights Hotel Accommodations
- ★ 14 Meals: 8 Breakfasts, 6 Dinners
- ★ Priced from \$999 Per Person - Twin Sharing

Grand Canyon Excursion October 25, 2013

Los Angeles - Williams, AZ - Grand Canyon - Laughlin

- ★ 4 Day Deluxe Motorcoach
- ★ Train from Williams on the Grand Canyon Railway
- ★ Admissions & Sightseeing per Itinerary
- ★ Professional Tour Manager Throughout
- ★ 3 Nights Deluxe Hotel Accommodations
- ★ 5 Meals: 3 Breakfasts, 2 Dinners
- ★ Priced from \$799 Per Person - Twin Sharing



**A RELAC discount will be deducted from all tour
prices featured on this page**

All prices reflect a discount for check and include applicable port fees, government taxes, fuel surcharges and are per person, twin sharing. Single rates are available. CA Seller of Travel
#1019830-40

News From LACERA

by JJ Popowich
Assistant Executive Officer



I hope everyone is doing well. This month's column is going to be a bit shorter than normal for me. I noticed the last few columns were a bit long so hopefully it all equals out. I had planned to write about another topic but after writing the article I decided it needed more work than time would allow for this month. So I decided to switch topics and let everyone know about LACERA's upcoming custodial bank change.

LACERA has used Bank of New York/Mellon Corporation as our Global Banking Custodian since 1994. Over the course of years, the global bank custody business changed and so has the needs of LACERA, so it was time to look at our options and make sure we had the best custodial bank with strengths in several areas including financial accounting and reporting, strong internal controls, deep and robust performance, analytical/risk management reporting, willingness to serve as an extension to staff, and the ability to provide exceptional services in regulatory compliance monitoring, corporate governance, banking services, benefit payments, and securities lending.

After an intense search LACERA's Board of Investments approved the selection of State Street Bank and Trust as our new custodial bank. State Street Bank and Trust will be our custodial bank effective July 1, 2013. LACERA staff are working diligently to ensure a smooth transition.

The good news is this transition will be almost transparent with virtually no impacts at all for our members. The only change members will notice is the name of the bank on your retirement benefit check if you are receiving a physical check starting with the July retirement benefits. Members receiving benefits by check will also see their July benefit check mailed one day earlier in July only. Members who receive their benefits by direct deposit will see no change at all. LACERA will continue to pay the promised benefit on time and in the same manner as we always have.

That's it for this month. Until next time please enjoy the summer.

For Sale

CEMETERY LOT – Located at Forest Lawn, Cypress, CA, Constant Love Section, Lot 698, Internment Space 4. Valued at \$5,000. Asking \$3,300 (or best offer) including transfer fees. Call Juanita or John at (323) 293-4705 or John's cell at (323) 376-1138.

1995 XJS JAGUAR CONVERTIBLE – 6 cylinder, white with tan top, excellent condition, 53,000 original miles. Asking \$16,000. Call (760) 202-6362 for more information.

VISA CARDS



2.99%
APR
Intro APR* for 12 months on purchases and balance transfers!

- No Annual Fee
- Real Time Fraud Monitoring**
- ZERO Liability**
- Identity Theft Assistance**
- and so much more!

Southland
CREDIT UNION

Membership is subject to eligibility. All new accounts will be verified through ChexSystems and are subject to credit approval. *APR=Annual Percentage Rate. 2.99% introductory APR for one year, based on your creditworthiness, available on Platinum cards only. After that, your APR will be 8.99% - 11.99%. This APR will vary with the market based on the Prime Rate. Classic cards APR of 14.99% - 16.99% based on your creditworthiness and will vary with the market based on the Prime Rate. Balance transfer, cash advance, foreign transaction, and other fees may apply. Offer is good through 8-30-13. Terms, features, programs, and conditions subject to change. **Program conditions and restrictions may apply.



www.SouthlandCU.org • 800.426.1917

Ray Guyovich Resigns From RELAC Board

Citing his move to Rancho Mirage and health issues as his reasons, Ray Guyovich has resigned from his position as a member of the RELAC Board of Directors. Ray has served as a member of the Board since 1998. He was elected President of RELAC in 2003 after serving two terms as First Vice President.



Among Ray's notable contributions was initiating and organizing the first RELAC picnic. Under his leadership the picnic became a very successful annual event. For a number of years Ray was responsible for putting on the annual Awards Luncheon, now renamed the Recognition Luncheon.

Ray served in the U.S. Army in World War II, seeing action in France, Luxemburg and Belgium. He fought until he was wounded in action.

Simon Russin has been appointed to serve out the remainder of Ray's term. As an active employee Simon was for many years a member of both LACERA's Retirement and Investments Boards.

RELAC To Whom It May Concern:

We are planning a 100th Birthday Celebration for your Board Member Emeritus and WWII Veteran – Dave E. Kalinger.



The gathering will be held at his retirement home on his 100th Birthday – Friday, July 26, 2013.

Please come by at 3:30 p.m. for Dave's favorite Baseball Team 'Angels' Theme Party: Hot Dogs, Peanuts, Cracker Jacks, etc. to be followed by Entertainment, Cake and Ice Cream Sundaes. The Angels have already responded. ☺

Vista Cove is located at:

601 Sunset Blvd., Arcadia, CA 91007

Phone contact for Vista Cove: (626) 447-0106 – Leandra or Samantha.

Please invite any and all members who worked with or played with Dave. We would love a list of potential attendees so we can plan the food and dessert adequately. Otherwise, just drop by is fine. ☺

Further information can be obtained from

Brenda (949) 939-4269 (BG – as Dave lovingly refers to Brenda)

Tiena (626) 919-6200 (TK – as Dave lovingly refers to Tiena)

RELAC HOSTS CONFERENCE OF LIKE COUNTY RETIREE ORGANIZATIONS

by Greg Walia
RELAC Immediate Past President

RELAC was pleased to host the 2013 Spring Conference of California Retired County Employees Association (CRCEA) from April 15-17 in beautiful Long Beach, California. This association of twenty California counties meets each spring and fall to discuss topics that are primarily of interest and issues affecting the well being of retired county employees. The conference was attended by 120 Delegates and Associates.



The conference's success was in large measure due to the leadership of **Diane Sandoval**, Chair of the 2013 CRCEA Conference Committee.

RELAC was honored to invite speakers with demonstrated expertise on topics of their presentations. I have described below the speakers and a brief synopsis of their presentation topics during the first two business days.

--- **Gregg Rademacher**, CEO, Los Angeles County Employees Retirement Association, (LACERA) spoke about "*Collaborating with Pension Stakeholders*". A very interesting "i-connect" presentation which provided instant feedback from the audience on retiree pension issues.

--- **Daniel J. Kinney**, Deputy District Attorney, Los Angeles County, Elder Abuse Unit. Mr. Kinney's topic of presentation on "*Protecting the Elderly Against Scams*" dealt with how the elderly can avoid falling prey to scams that particularly target seniors and elderly folks.

--- **Mark Saladino**, Treasurer/Tax Collector, Los Angeles County, spoke on "*Financial Management after Retirement, Real Estate Transfers (one time base year value transfer for seniors) and the Perils and Pitfalls of Reverse Mortgages*". Mr. Saladino offered expert insight on "do's and don'ts" on each topic. His presentation was extremely well received. Unfortunately though, due to time constraints, several questions from the audience went unanswered.

--- **Barbara Ajemian**, Vice President, Convention Services, Long Beach Convention Visitors Bureau. Ms. Ajemian presented her topic "*Long Beach Highlights and Attractions*" with utmost energy and enthusiasm. She even offered special discounts to CRCEA attendees for certain city attractions for the duration of the conference. Well received.

--- **Darby LaJoye**, Federal Security Director, TSA-LAX. Mr. LaJoye's presentation was on "*TSA Security Initiatives and Risk Based Screening*". This topic touched just about every nerve of those who travel by air and go through security check-ups at airports. Mr. LaJoye handled some caustic comments with professionalism and attempted to explain recent relaxation in TSA rules that now allow passengers to carry small knives aboard.

--- **Kirby Bosley**, Sr. Vice President, Aon Hewitt. Ms. Bosley spoke on "*Affordable Care Act, Medicare*" and its major provisions that go into effect beginning 2014. Numerous questions were answered, but several remained unanswered either due to full familiarity with all the provisions of the law or time constraints.

--- **Tara Gruenewald**, Professor, USC Leonard Davis School of Gerontology. Ms. Gruenewald's presentation topic "*Secrets to a Happy and Healthy Retirement*" really hit home for all of us in attendance. The topic dealt with healthy eating habits, the value of daily exercise and the power of positive outlook in life.

--- **Legislative Report-Sacramento Scene**. Panelists included: **Amy Brown**, CRCEA Legislative Consultant; **Karon Green**, Consultant to the Assembly Committee on Public Employees, Retirement and Social Security; and **Pam Schneider**, Principal Consultant, Senate Committee on Public Employment

and Retirement. All three consultants are based in Sacramento and were expected to bring us up-to-date on current legislative bills via "Skype". However, due to transmission problems, we had difficulty in establishing an effective two-way communication.

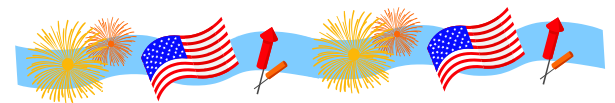
On behalf of the RELAC Board of Directors, I wish to extend a very hearty THANK YOU to **Steve Pettie** of *Pacific Group Agencies* for holding two *Hospitality Receptions* during two days of the conference. The receptions provided a great opportunity to conference attendees to co-mingle and get to know each other in an informal and relaxed setting.

Two other groups that deserve special acknowledgement and many thanks are: **Southland Credit Union** for sponsoring *Tuesday's Morning Break*, and to **Liberty Mutual Insurance** for hosting *Tuesday's Afternoon Break*.

I also want to take this opportunity to thank **Skip Murphy**, CRCEA President, **Dorothy Lueking**, CRCEA Secretary, and **Betty McCollum**, CRCEA Conference Chair for their prompt support and encouragement to host this conference.

We received many kudos and thanks for hosting a well-planned, meaningful and an enjoyable event. For this, I would be remiss if I failed to thank and sincerely express my personal gratitude to my colleagues on the **ad hoc committee** and to all members of RELAC Board and our **office staff** for their dedicated commitment, hard work and willing support in hosting a very successful conference. Thank you all again.

The 2013 Fall CRCEA Conference will be hosted by Retired Employees of Fresno County (REFCO) in Fresno, California.



Will Obamacare Affect Health Benefits of LA County Retirees?

RELAC member Merv Brenes wrote asking how Obamacare will affect Los Angeles County retiree health plans in 2013, particularly Kaiser. Bill de la Garza, who is both RELAC's President and the retiree representative on the Board of Retirement, responded that it was his understanding that none of our health plans would be affected.

To be certain he was correct Bill forwarded Merv's question to John Popowich, LACERA's Assistant Executive Officer. John sent a letter to Merv confirming Bill's response, no effect in 2013. He added that most of the provisions of the Obamacare law apply to private sector employees.

Investments continued from p.4

In addition, the Board conducts annual actuarial valuations to measure the plan's funding progress and recommend the employers' contribution rates.

INTERESTING STATISTICS

The Valuation reported a 1% decrease in the size of the active member population which totals approximately 92,000 with an overall average age of 46.7. The retired population increased by 2.5% and totals over 56,500. The average benefit payment increased by 3% to approximately \$3,600 per month and the average age of retirees increased by approximately two months to 71.9. This means we are living longer! Hooray!!!

At the Las Vegas Regional Meeting at the Plaza Hotel and Casino, Gregg Rademacher, LACERA CEO, reported that the **estimated** market value of the fund is at \$44 billion (latest information available). This is exactly where the fund was before the financial crisis in 2009. We are approaching the end of the 2012/2013 fiscal year. I will definitely provide you with the estimated market value of the fund in my next article. The Audited Annual Financial Report will be available no later than October 31, 2013.

Until the next issue, thank you for your continued interest and support. Take care and stay well!



Jack Gillespie

We were sorry to hear of the death of Jack Gillespie. He was a member of the RELAC Board of Directors from 1984 until 1997, serving with distinction on a variety of committees. He is remembered as someone who was always ready to pitch in whenever there was a need. Jack was also noted for his good humor and his cheerful attitude.

Jack served in the Marines throughout World War II. After the war he came to work for Los Angeles County. He retired from County service in 1979.

IN MEMORIAM

This list includes retired employees, both RELAC members and non-members.

Agricultural Comm./Wts. & Meas.

Heuer, John J.
Sium, Michael
Witt, Ronald

Alcohol/Drug Pgms, Admin

Boutros, Samuel

Animal Control

De La Puente, Maricela
Murphy, Warren A.
Ponce, Theresa D.

Antelope Valley Rehab. Center

Alvarado, Steven A.

Art Museum

Blyth-Hill, Victoria S.

Assessor

Allen, Max R.
Bavnick, Stewart
De La Paz, Flaviana P.
Jackson, Walter E.
Johnston, James I.
Khalil, Gabriel
Nielsen, Neil J.
Polek, Rita J.
Williams, Edna M.

Beaches & Harbors

Chavez, Robert P.

Board of Supervisors

Merelman, Jack M.
Nielsen, Barbara J.

Chief Executive Office

Davis, Larry L.
Davis, William E.
Fare, Kenneth F.

Chief Information Office

Brown, Marie A.
Roberson, James
Washington, James E.

Child Support Services

Barit, Ambrose N.
Murata, Akiko J.

Children & Family Services

Bose, Sandra D.
Calhoon, Barbara J.
Davies, Patricia A.
Dewester, Nola M.
Dyas, Denise D.
Edwards, Barbara H.
Martin, Ida P.
Petersen, Joan
Sicurella, Guy F.
Vida, Bill R.

Community & Senior Services

Lambert, Marion C.
Watkins, Lee

County Counsel

Ager, David M.

Data Processing

Brayboy, Evelyn M.
Farrow, Patricia
Greene, Sung I.

District Attorney

Fukasawa, Sumiko
Gossett, James U.
Hecht, Carolynne M.

Engineer

Burkholder, Darwin L.
Gillespie, Jack T.
Haggerty, Donald K.
McMillan, John F.
Oliney, Hildrey
Sonnenschein, Max

Fire

Anderson, Edward L.
Cain Jr., Oscar C.
Cota, Steven A.
Enright, James J.
Gillaspy, Richard J.
Jones, Richard L.
Kay, Ronald
Mellring, John T.
Price, Rees E.
Snee, Thomas M.
Thacker, Herb
Thompson, Carroll M.
Vogel, Frank J.
Worsham, Lee R.

Flood Control

Fisher, Joe J.

Harbor/UCLA Medical Center

Brockman, Carrie L.
Carrillo, Manuel
Drake, Etta M.
Lee, Carmela P.
Marshall, Gavina
Ross, Darrel
Somin, Thomas
Wallace, Kathrine
Wolfe, Eileen L.

Health Plan Administration

Hotchkiss, Gladys L.

IN MEMORIAM

This list includes retired employees, both RELAC members and non-members.

Health Services

Dran, Helen M.
Johnston, Glen W.
May, Irene L.
Ramirez, Emma
Sarei, Claire

Health Services Administration

Brown, Ray A.
De Shay, George R.
Grigsby, Lake C.
Golding, Levi B.
Hunter, Ruby M.
Jones, Daniel
Richardson, Bessie D.
Shelton, Amelia S
Witherill, Liston A.

Internal Services

Bastedo, Clinton K.
Brenman, Suzanne
Briggs, Arthur
Chicote, Bernardo
Felix, John
Holmes, Robert N.
Jensen, James I.
Johnson, George W.
Lloyd, Maple C.
Lopez, Luis J.
Powell, Eugene
Price, Roger N.
Ruffin, Robert E.

King/Drew Medical Center

Ard-Brown, Theresa Wood
Jackson, Katherine R.
Johnson, Priscilla A.
Jones, Ophelia
Kimble, Lomay
Maddox, Willene
Sung, Gabriela
Washington, Emma J.

LAC+USC Medical Center

Armstrong, Henry J.
Davis, Clarence M.
Durden, Scott M.
Hammond, Alice B.
Hankins, Bernadine
Hinton, Norma N.
Holt, Carrie B.
Johns, Rosie M.
Kayne, Martha A.
Lott, Myree
Mansilla, Jesus
Marsh, Rosa L.
Minjares, Ida L.

Minkler, Anna M.
Ortega, Maritza R.
Rosas, Elva E.
Watkins, Gwendolyn P.
Williams, Wilma J.

LACERA

Agnello, Dolly L.
March, Madeline H.
Noisette, Julia M.

Mechanical

Alsobrook, Charles W.
Rogers, Warren W.

Medical Examiner-Coroner

Kono, James I.

Mental Health

Davis, Mary H.
Fukumoto, Setsuko
Jackson, Lois L.
Marinetti, Jo A.
Palisoc, Teodulfo C.

Municipal Court

Aldrich, Carrolle P. (Citrus)
Apodaca, Virginia M. (Rio Hondo)
Armstrong, Edith A. (Pasadena)
Bashore, Louise S. (Citrus)
Dietrick, Thomas J. (Pomona)
Weyant, Gladys E. (Compton)

Natural History Museum

Bisno, Jay A.

Olive View/UCLA Hospital

Brubaker, Joanne E.
Hamel, Neal C.
Paltin, Gerald S.
Prentice Jr., Hugh M.
Stone, Lila F.

Parks & Recreation

Ceballos, Frank N.
Difatta, John J.
Fox, Leonard C.
Gonzales, Alfred E.
Sifuentes, Rachel

Probation

Arnold, Carl M.
Bague, Alfred
Devereaux, Frank R.
Felix, John W.
Foley, John F.
Fraser, Noel M.
Hernandez, Marie A.
Keys, James L.
Krescent, Allan
Mershon, Dorothy L.
Morris, Helen W.

Ng, Ming S.
Rhiner, Seth
Sacks, Charles H.
Smith, Winston L.
Tedford, Norman W.
Walker, Annette
Walker, Bobby
Whisenant, W. D.
Young, Pearl H.

Public Admin./Public Guardian

Kristovich, Baldo M.

Public Defender

Chrisman, Charlene
Sugita, Marie M.

Public Health Program

Bush, Bartholomew M.
Campos, Abraham
Gonzales, Virginia A.
Hightower, Reecy W.
Humphrey, Jacqueline E.
Kinoshita, Kazuko
Walters, Lois M.

Public Library

Brown, Yvonne D.
Byrd, Donna M.
Ptaszek, Helen J.
Westgarth, Dolores
Williams, Barbara A.

Public Safety

Abbott, Clarence L.
Jarvis, Robert L.

Public Social Services

Alexander, John M.
Aragon, Gilbert
Baker, Marilyn L.
Brown, Dolores R.
Caliri, Dolores R.
Cole, Bernard
Dashut, Evelyn
Fong, Viola
Fung, Richard
Garcia, Vilma
Goldman, Doris
Hamilton, Jean M.
Hathcock, Richard
Hines, Sundra K.
Hunt, Lou
Janofsky, Edith
Johnson, Candida P.
Kennedy, Alvin L.
Leverette, William C.
Little, Virginia D.
Linehan, Ruth M.

IN MEMORIAM

This list includes retired employees, both RELAC members and non-members.

Long, Shirley D.
Mulligan, A. Grace
Matz, Michael S.
Murphy, Maria E.
Nehez, Joan T.
Norton, Ruth
Paciolla, Caterina
Palmer, Kenneth S.
Patterson, Marilyn E.
Peterkovich, Esther L.
Pickens, Howard
Ray, Thelma E.
Richey, Roberta M.
Rizzi, Frederick
Sanford, William E.
Santiago, Domingo
Shaevitz, Leonard
Song, Duk H.
Sonnenschein, Walter
Tilahun, Birhanei
Tillman, Leola B.
Veliz, Oscar
Vu, Ninh Q.
Williams, Winifred
Winship, Jessica A.
Wright, Ruth A.
Yee, Gloria C.

Public Works

Aquino, Alfredo V.
Blair, John M.
Brown, John E.
Camarillo, Henry T.
Estevez Jr., Alfredo M.
Khalil, Fikry I.
Parker, Harry
Peterson, Larry J.
Ramirez, Robert H.
Segelken, John M.
Straight, Richard J.
Troncoso, Edmundo
Valenzuela, Arturo

Rancho Los Amigos Hospital

Chavez, Barbara
De La Rosa, Steven T.
Evans-Okyere, Terri J.
Garza, Feliciano
Haddeman, Anna L.
Jacobson, Esther L.
Johnson, J. T.
Kellar, Bernice H.
Land, Helen M.

Morgan, Mildred L.
Montemayor, Maria T.
Nwagbara, Selinah A.
Perry, Jacquelin
Reynolds, Helen
Roche, John P.

Reg.-Reorder/County Clerk

Lubach, Donald W.

Regional Planning

Safran, Rhoda

Sheriff

Avines, Wanda C.
Ballenger, Leland O.
Boberg, Jack W.
Brookwell, Andrew R.
Bollong, Robert W.
Burk, Nancy
Burnett, Edwin L.
Charles, Samuel
Cooper Jr., George J.
Copeland, Donald L.
Craig, Danny J.
Cushenberry, Leonard J.
Davidson, Ethel
Easter, James B.
Escarzaga, Joseph H.
Fendry, Joann
Fortner Jr., George L.
Hearn, John W.
Hickman Jr., Raymond J.
Lua, Ismael
Lukowich, Edwin M.
Mariano, Anthony J.
Matteson, Edd J.
Means, Michael D.
McEwan Jr., John T.
Morse, Rollin E.
Neis, Mervyn L.
Nelson, John A.
Nevarez, Refugio F.
Nichols, Frances J.
Nichols, Peter L.
Nist, Norman W.
Olivas, Adrian A.
Page, Armand W.
Pruden, James C.
Reynolds, Edward A.
Riley, Dearyl A.
Rogers, Benjamin A.
Sanders, Elizabeth M.
Savedra, Isabel

Shields, Patrick R.
Spurlin, Earl T.
Stanyan, John S.
Thomas, David O.
Tracy, Welda L.
Trostle, Lawrence
Valley, John
Vaughn, Jack B.
Vestey, George R.
Williams, Mary A.
Wilson, Shirley A.
Wolf, Jerry M.
Wright, Warren H.
Wyatt, Billy B.

So. Cal. Air Pollution Control

Grant, William M.

Superior Court/County Clerk

Barr, Loraine I.
Cabal, Geronimo M.
Cain, Sidney D.
Costantini, Joanne
Cunningham, Christina
Gobert, Stacey F.
Gardner, Josie
Johnson, Marilou B.
Johnson, Norma L.
Lazo, Julita
Levario, Carlos
Mewborn, Winifred K.
Rivera, Carlos A.
Shenheit, Laurie
Whorton, Fernando E.
Willilams, Roger K.

Treasurer & Tax Collector

Backstrom, Weber S.
Jeffries, George W.
Ruhnau, Paul H.
Sanchez, Frances R.
Vios, Conrado

Women's Hospital

Edra, Gerardo C.

Department Not Designated

Chapman, Helen J.
Goodbread, Donald J.
Hoffman, Eugene R.
Sylvester, Arnold J.
Wirt, Jessie R.



RETIRED EMPLOYEES
of LOS ANGELES COUNTY
1000 South Fremont Ave. Unit 15
Alhambra, CA 91803-8802

Return Service Requested

NON-PROFIT
U.S. POSTAGE
PAID
PERMIT #66
PASADENA, CA

General Membership Meeting

Mary K. Rodriguez, Chair, Program Committee



Tuesday, September 24, 2013

Ayres Hall

Los Angeles County Arboretum
301 North Baldwin Avenue, Arcadia, CA 91007

9:00 a.m. – Complimentary Refreshments

10:00 a.m. – Meeting Begins

Our keynote speaker will be
Robert Hill, Assistant Executive Officer, LACERA
"STATE of LACERA"

~ DOOR PRIZES ~

Please bring your RELAC Membership Card
At the end of the program members are welcome to tour the
Arboretum at no cost.



IMPORTANT!
*Are you moving?
Did you change your
name?*

Cut out the address
portion of this
newsletter, correct it
and mail to:

RELAC
1000 S. Fremont Ave.,
Unit 15 Alhambra, CA
91803-8802 or
Phone:
(800) 537-3522
(626) 308-0532
Fax: (626) 308-2901
Email:
admin@relac.org
website:
www.relac.org

Note: It is important
that you mail this
to RELAC or contact
RELAC by phone as
we DO NOT receive
your address change
from LACERA.



DRIVING DIRECTIONS:

From Route 210 Fwy. Going either east or west, exit at Baldwin Avenue. Proceed south on Baldwin Avenue 1/4 mile. Turn right into the first driveway and park in front of Ayres Hall.

From Huntington Drive. Go north on Baldwin Avenue 1 1/4 miles. Turn left at the traffic signal and enter the parking lot. Ayres Hall is located just off the northerly portion of the lot.