

Jan/Feb 2012 Vol 47-1

President's Message

by Bill de la Garza

Dear Friends,

Once again, I'm very proud and humbled that your RELAC Board of Directors has elected me to serve as your President for 2012. I served as your President in 2001 and 2002 and now ten years later I have the privilege to serve you for another 2nd term. Being President of RELAC is not an easy job. It requires a great amount of time, good management and most important, a serious commitment to serve our members. To this end, I again accept my responsibilities and pledge to you that I will work hard in fulfilling the duties of your President.

It is important for you to know that the success of RELAC is dependent on the work and efforts of its Board of Directors and standing committees. Our volunteer Directors are individuals who are truly committed to serving retirees and especially the retired employees of Los Angeles County. They recognize that our top priority is to enhance and protect our pension and medical plans and to continue the many services that we provide to our members. I urge you to carefully read your RELAC Newsletter and become familiar with important information that concerns County Retirees and the many Recreation services that RELAC provides. RELAC is the only non-profit organization whose total and only commitment is to serving Retirees of Los Angeles County. RELAC membership is open to all retired employees of Los Angeles County

Sad News and Good News: It is with regret that I inform you that Ida Ramos elected not to be placed on the ballot for our Board of Directors for another three year term. Ida served on the RELAC Board for six years. Her management and leadership skills have been an asset to RELAC. During her tenure with RELAC she served as Vice President and Chairperson of our Office/Management and Newsletter Committees. We will miss Ida, but she has indicated to me she will make herself available to help RELAC whenever she is needed.

The good news is that RELAC has two new Board Members. Jason H. Williams was unanimously appointed to fill a Board vacancy. Jason has served RELAC on our Investments and Regional Support committees. Jason brings a multitude of management, investment and people skills to our table. While employed with the County, he served in major executive positions.

James "J.P." Harris was elected to serve on the RELAC Board of Directors for a three year term. J.P. retired in 2010 after 35 years of County service. He served as the Alternate Safety Member on LACERA'S Board of Retirement. J.P. also served as the President of the Association for Los Angeles Deputy Sheriffs. He has a Masters Degree in Leadership from USC.

RELAC welcomes Jason H. Williams and J.P. Harris to our Board of Directors. Their backgrounds and credentials will contribute to maintaining the strength of the Board of Directors.

On behalf of your Board of Directors and staff, may I take this opportunity to wish you and your family a healthy and happy 2012. As customary, I leave you with this thought:

"The grand essentials of happiness are: Something to do, something to love and something to hope for."

Thomas Chalmers



Inside the Newsletter

E-Mailed Newsletter

For the first time the Newsletter is being e-mailed. Those RELAC members who chose e-mail are reading this issue on their computers. Those of our readers who would like to try it out can find more information and a coupon on page 11.

Also Inside the Newsletter

The war against public retiree benefits goes on. Dave Muir has reported on a win for health care benefits (page 2), provided more information on the Governor's proposals to curb public employee pensions (page 5) and on some new anti-pension ballot initiatives (page 6).

There is still time to register to attend RELAC's **Annual Awards and Recognition Luncheon**. It's being held on January 19 at Almansor Court in Alhambra. The details and the registration form are on page 3.

Some Late News

The RELAC officers elected by the Board of Directors to lead RELAC in 2012 are:

President: Bill de la Garza

Vice President: Dave Muir

Secretary: Mary K. Rodriguez

Treasurer: Ed Morris



Supreme Court Decision Adds to Protections for Retiree Health Benefits

Los Angeles County retirees' right to health Insurance is made more secure

by Dave Muir
RELAC Vice President



The California Supreme Court, in a remarkable unanimous decision, ruled that a county can be bound by an implied agreement to provide lifetime health benefits to retirees if that was the government's intent. A written contract expressly stating that the benefits are vested for life is not required.

The case before the Court involved the retiree health care program in Orange County. The Orange County Board of Supervisors began making its health care plans available to retirees in 1966. Initially, premiums were determined separately for active and retired employees. The County contributed towards payment of premiums for the active employees, but retirees were required to pay the entire premium themselves.

In 1984, the County began pooling active and retired employees in the rate setting process. Because it is more expensive to insure retirees, this pooling arrangement resulted in higher premiums for active employees and lower premiums for retirees. The combined pooling arrangement had the effect of the County partially subsidizing retiree premiums. According to pleadings filed in the case, the pooling arrangement resulted in average savings per year per retiree of over \$3,000.

Beginning January 1, 2008, the County reverted to its prior practice of separately determining premiums for active and retired employees. This caused the retirees' premiums to rise dramatically. The Retired Employees Association of Orange County sued the County in federal court, arguing that the County's "decades-long practice" of subsidizing retiree premiums created an implied agreement to continue the pooling arrangement and that the Board of Supervisor's action eliminating the subsidy violated a vested contract right.

The U. S. District Court entered judgment against the retiree association, holding that under California law the County can only be bound to obligations set forth in a written agreement, and there was no written agreement stating that the pooling arrangement would continue in the future. The retiree association appealed, and the federal appeals court asked the California Supreme Court to rule on whether, under California law, "a California county and its employees can form an implied contract that confers vested rights to health benefits on retired county employees."

The California Supreme Court issued its opinion on November 21, 2011, holding that a California county and its employees can indeed form an implied contract that grants vested health benefits.

LACERA retirees are in a much stronger position than Orange County retirees, because there are written agreements between LACERA and the County clearly conferring vested lifetime health benefits on retirees.

LACERA implemented the retiree health care program in 1971. The Board of Retirement used excess investment earnings to subsidize retiree premiums. The subsidy was based on the number of years of service credit under a formula that remains in effect today. In 1982, the Board of Supervisors entered into a written contract with the Board of Retirement that required the County to take over the funding of the premium subsidy in exchange for certain funding relief LACERA made available to the County that enabled the County to weather a particularly difficult economic period. In 1994 the agreement with the County was amended to delete a provision that the County would only subsidize premiums as long as the County provided a health insurance program to active employees. The elimination of that provision now obligates the County to continue the retiree health care program even if it stops providing health insurance to active employees.

continued on p. 4

Investments Board

by Diane Sandoval
Retiree Representative,
LACERA Board of Investments



Happy New Year and congratulations for surviving another hectic holiday season! I am pleased to announce the appointment of Mr. David Kushner as LACERA's Chief Investment Officer (CIO). Mr. Kushner was the CIO for the County and City of San Francisco and is highly regarded in his field. I first met Mr. Kushner (he was one of my instructors) in 2007 while attending a Principles of Pension Management for Trustees Course at Stanford Law School sponsored by the California Association of Public Retirement Systems (CALAPRS).



I'd like to thank Mr. John McClelland, LACERA Principal Investment Officer-Real Estate, for his outstanding job as the Interim Chief Investment Officer while the Board and CEO conducted and completed their search for a permanent CIO.

Since my last article the financial markets have continued to experience uncertainty and volatility. In spite of the roller coaster ride the LACERA portfolio has managed to hold its own. In my last article I reported that as of August 31, 2011 LACERA's portfolio generated a 4.2% gross return and had a market value of approximately \$37.3 billion. As of the latest report the portfolio as of October 31, 2011 has generated an estimated 1.4% gross return and had a market value of approximately \$37.4 billion.

Recently I had the opportunity to attend a CRCEA Conference in Santa Rosa, CA hosted by the Retired Employees Associations of Sonoma and Mendocino Counties. (CRCEA is the acronym for California Retired County Employees Association.) Its membership is comprised of the 20 counties in California operating under the 1937 Act. RELAC is a member of CRCEA. Together we represent approximately 150,000 retirees.

Each time I attend these conferences I'm left with a deep appreciation for being a Los Angeles County retiree. In spite of the fact that all 20 counties administer their plans according to the 1937 Act statutes each county is unique in how they administer their pension plans. A distinct difference being in 1977 the L.A. County Board of Supervisors, with the cooperation of the employee unions, began to reduce pension benefits (created plans B, C, D and E for future general members and plan B for safety members) in order to manage their pension costs. As such, Los Angeles County is better poised to meet the economic challenges facing municipalities in California and throughout the US.

As always thank you for your continued support. I look forward to seeing you at the various activities/meetings in 2012.



RELAC

Annual Recognition and Awards Luncheon

January 19, 2012

Almansor Court - Alhambra, CA

KEYNOTE SPEAKER: WILLIAM FUJIOKA

County Chief Executive Officer

Also featured will be the uplifting voices of

THE TRANSPORTATION SECURITY ADMINISTRATION (TSA) CHORUS

THE COUNTY SHERIFF'S DEPARTMENT COLOR GUARD WILL PRESENT THE FLAGS



All members and their spouses and guests are invited to RELAC's Annual Awards Luncheon, being held Thursday, January 19, 2012 - Almansor Court, 700 South Almansor Street, Alhambra, CA
Meal costs are being subsidized 50% by RELAC

Choice of entrees - Roulade of Chicken or Prime Rib of Beef
with salad and dessert

\$15.00 per luncheon ticket - tax and tip included

No Host Cocktail Hour 10:30 a.m. - 12:00 p.m.
Luncheon and Program 12:00 p.m. - 3:00 p.m.
Free Parking

Come make new friends - Have a good time!

RESERVATION FORM

Annual Recognition and Awards Luncheon • January 19, 2012 • Almansor Court, Alhambra, CA

Member _____
Spouse _____
Address _____
City _____ State _____ Zip _____
Guest(s) _____

(Attach additional sheets if necessary)

A. ROULADE OF CHICKEN

Member/Spouse _____ \$15.00/ea = \$ _____
Guest(s) _____ \$15.00/ea = \$ _____

TOTAL A \$ _____

B. PRIME RIB OF BEEF

Member/Spouse _____ \$15.00/ea = \$ _____
Guest(s) _____ \$15.00/ea = \$ _____

TOTAL ENCLOSED \$ _____ TOTAL B \$ _____

Make check/money order payable to "RELAC" and mail to:
RELAC

1000 So. Fremont Ave., Unit 15
Alhambra, CA 91803-8802

NO LATER THAN JANUARY 12, 2012

We regret we are unable to refund payments on cancellations received after January 15, 2012

REAL ESTATE



Purchase or refinance your Mortgage Loan with Southland and save!

- **Low Rates**
- **Flexible Terms**
- **Funding in as little as 30 days**

Purchase Options

- Financing for primary residence, second homes, and investment properties
- 15, 20, 30, or 40-year low fixed-rate Mortgage Loans
- Adjustable Rate Mortgages (ARM)
- Jumbo Loans available

Refinance Options

- You may be paying too much on your current mortgage. Take advantage of a free Mortgage review and see how much you can save!

RELAC Members
Join and receive a free gift!"



Membership is subject to eligibility. All new accounts will be verified through ChexSystems and are subject to credit approval. Real Estate Loans are subject to credit approval. Due to current real estate and economic conditions, loan requests that exceed 80% of the property's value will require additional review and may incur higher costs. Loan funding is subject to membership eligibility and credit approval.



www.SouthlandCU.org • 800.426.1917

Supreme Court continued from p.2

LACERA retirees do not have to rely on an implied contract, as is the case in Orange County. But the Court's decision is nevertheless important because it demonstrates the Supreme Court's recognition that retiree health care benefits can be vested and entitled to the Court's protection.



Have you checked into RELAC's Website?

Our website contains information that provides RELAC members with interesting and useful information. You will find news of importance to Los Angeles County retirees, news which was too late to make it into the most recent issue of the Newsletter but can't wait for the next issue. There is a calendar which tells what events and activities are scheduled for the next year. If you have mislaid your Newsletter, registration forms are available for imminent events and activities in which you would like to participate. And much more.

The website address is www.relac.org. Give it a try.



We are still playing "HIDE AND SEEK" !!!

We are still seeking members who are hiding out! We are anxious to locate these members so that they can enjoy all the benefits RELAC has to offer. In most cases, we believe these members have moved and have not given us their forwarding addresses. If you are in contact with any of the following lost RELAC members, please ask them to call us at (800) 537-3522 or e-mail us at admin@relac.org.

Barbara Almogue
Miguel Alvarado
Stanley Bixler
Nancy Blackard
Maude Blackburn
Ruth Blake
Donna Dean
Mondene, Dean

Norman Deaton
Larry Lindholm
Evageline Linnet
Christina Linsangan
Leonard Lippert
Marie Liu
Arthur Palmer
Harold Parsons

RELAC DOES NOT RECEIVE REPORTS OF ADDRESS CHANGES MADE TO LACERA SO BE SURE TO LET US KNOW IF YOU MOVE!

REGIONAL ACTIVITIES

by Diane Sandoval
Chair, Regional Support Committee

Happy New Year! Your committee is looking forward to a busy year. RELAC's first regional meeting is in Lancaster on Thursday, March 1, 2012 at the Ionian Plaza, 4225 10th St. W, Lancaster, CA. **Look for the reservation form at the end of this article.**

Your Committee has planned a great program for your luncheon meeting. Mr. Norm Hickling, Deputy to Supervisor Antonovich, has confirmed he will attend to welcome attendees and report on the latest issues concerning your community and Los Angeles County.

Our featured speaker will be Mr. Robert Hill, LACERA Assistant Executive Officer, who will update us on our medical and pension benefits; report on the financial condition of the Trust given the continued volatility in the financial markets and discuss the latest attacks lodged against defined benefit plans. Time will be allotted for questions.

Thanks to Donna Livermore for providing the name and phone number of the caterer she used every year for her meetings at the Elks Lodge. Those of you who attended every year may remember that the buffet luncheon was plentiful and delicious. Thankfully the caterer was available on the date of our meeting and has agreed to cater our event.

The cost of the luncheon is only \$10.00 per person. Yes I said it's \$10.00 for a two course entrée buffet (including salad, side dishes, bread/rolls, coffee or tea and dessert). **AND** of course we will have door prizes to be awarded to those of you who are lucky to hold a winning ticket. **Plan to attend and reconnect with old friends and co-workers.**

Send in your reservation **no later than February 21, 2012** along with your personal check for \$10.00 per person payable to RELAC. Please call the RELAC office if you have any questions. Keep in mind this luncheon meeting is open to all RELAC members so. Why not plan a day trip to attend the meeting? We look forward to beginning the year with record attendance.

Cancellation of the Las Vegas Luncheon Meeting

In order to better serve **all** of RELAC's membership, the RELAC Board has decided to hold regional meetings in Las Vegas, NV every other year. Needless to say to assist you with your planning we will inform you as soon as a date and location is confirmed.

Later in the year we are planning a meeting in Palm Springs. Details will follow in a later issue. Contact the RELAC office if you have suggestions/comments on changes you'd like us to consider in future regional meetings. We are here to serve!

Reservation Form

Lancaster Regional Luncheon Meeting

March 1, 2012

Ionian Plaza

4225 10th Street W, Lancaster, CA

Name(s) _____

Address _____

City _____ St. _____ Zip _____

Cost of Luncheon \$10.00 per person x _____ = \$ _____
(Tickets to be picked up at door)

Doors open at 10:00 a.m. Program begins at 11:00 a.m.

Make check/money order payable to "RELAC" and mail to:

RELAC

1000 So. Fremont Ave., Unit 15

Alhambra, CA 91803-89802

Reservation Deadline February 21, 2012

Cuts in Retiree Benefits Avoided By Governor's Pension Reform Plan

By: Dave Muir, Chair
Legislation Committee

Governor Jerry Brown released his "Twelve Point Pension Reform Plan" on October 27, 2011. I'm happy to report it does not include any proposal that would reduce retiree benefits. Some of Brown's proposals are concepts that have yet to be fully defined. Here is a quick summary:

1. Equal Sharing of Pension Costs – Current Employees and Employers

All new and current employees would be required to contribute at least 50% of the annual cost of their pension benefits. The increased contribution levels would be phased in "at a pace that takes into account current contribution levels, current contracts and the collective bargaining process."

2. "Hybrid" Risk-Sharing Pension Plan – New Employees

The new plan would include a reduced defined benefit component and a defined contribution component (presumably a 401(k) plan) that would be managed professionally. Those two components would be combined with Social Security in a way that envisions a retirement benefit that replaces 75% of an employee's salary. For those employees not in Social Security, the goal of 75% salary replacement would be comprised of two-thirds from the defined benefit component and one-third from the defined contribution component. The State Department of Finance is tasked with designing the plan that includes a cap on the defined benefit portion so that employers "do not bear an unreasonable liability for high-income earners."

3. Increased Retirement Ages – New Employees

New employees would have to work to a later age to qualify for full retirement benefits. For general members, the age would be the Social Security retirement age (now 67). The retirement age for safety members is still under discussion. Brown's Plan specifies it will be "less than 67, but commensurate with the ability of those employees to perform their jobs in a way that protects public safety."

4. Three-Year Final Compensation – New Employees

Pension benefits would be based on the highest average annual compensation over a three-year period. Brown's proposal explains: "[The one-year] rule encourages games and gimmicks in the last year of employment that artificially increase[s] the compensation used to determine pension benefits."

5. Calculation of Benefits Based on Regular, Recurring Pay Only – New Employees

Benefits would be based only on the normal rate of base pay, excluding special bonuses, unplanned overtime, and payouts for unused vacation or sick leave, and other pay perks.

continued on p. 9

News From LACERA

by Janice Golden
Assistant Executive Officer

Happy New Year, Retired Employees of Los Angeles County! I hope 2012 brings you good health and much happiness.

At the beginning of each New Year, I like to provide a quick review of some important information regarding your LACERA retirement.

1099-R Mailing

By January 31, 2012, 1099-R forms will be mailed to all retirees. By February 2012, you'll be able to access your 2011 1099-R form on-line through "My LACERA" on lacera.com.

Tax Withholding Form

Now is the time to review your federal and California state tax withholding amounts. If you need to change your tax withholding amounts, you can: download and print a tax withholding form from the "Brochures & Forms" page on lacera.com; order a tax withholding form from the "Brochures & Forms" webpage; make and submit changes to your tax withholding amounts through "My LACERA" on lacera.com; or contact LACERA at 1-800-786-6464 and request that a tax withholding form be mailed to you.

Paydays

LACERA retirees are paid on the last business day of each month. A copy of the payday calendar was mailed with your December 2011 *Spotlight on Retirement* newsletter. The LACERA payday calendar can also be accessed on lacera.com, under "Benefits, Retired Member."

Direct Deposit

If you don't already participate in direct deposit, you may wish to consider this option. With direct deposit, you can have immediate access to your money on payday; you won't have to wait for a check to arrive in the mail.

If you're interested in opening a new direct deposit account, LACERA can assist you in doing so either over the phone or at the "Brochures & Forms" webpage. Remember, it's best to keep your old account open until your retirement allowance is deposited into your new account. If you need to make any changes to your direct deposit account, be sure to contact LACERA with your updated information.

Address Updates

If you move, please contact LACERA with your new mailing address to ensure that your check or Automatic Deposit Receipt (ADR) gets to you promptly. Please note that it is not enough to simply contact the Post Office and submit a change of address form to them; the Post Office will not forward LACERA retirement checks and ADR's to members. Instead, these mail items are returned to LACERA, and LACERA must then contact members for correct contact information. To avoid delays in receiving your payments, keep LACERA informed of any address changes. Thanks!

If you have a question about any of the above information or prefer to request a tax withholding form, participate in direct deposit, or update your contact information by phone, contact LACERA at 1-800-786-6464, and a LACERA Retirement Benefits Specialist will assist you.



Newly Submitted Initiative Aims to Reduce Cost of Living Adjustments

by Dave Muir
Chair, Legislation Committee

A Republican-backed pension reform initiative was filed with the Attorney General's Office on November 2, 2011. Once the Attorney General issues a title and summary of the proposal, the sponsors of the initiative will have 150 days to obtain the 807,615 signatures required to qualify the proposed initiative for the ballot. The Secretary of State has estimated that the time for obtaining signatures will commence approximately January 6, 2012.

The initiative proposal would add several pension reform measures to the California Constitution. There are two versions of the initiative: Version one would close traditional pension plans to all public employees hired on and after July 1, 2013. They would instead be enrolled in a retirement plan that does not have "the potential to accumulate debt or unfunded liabilities owed by the government agency." This seems to envision a 401(k) styled plan or a defined benefit or annuity program not operated by the government. Version two would place new employees in a retirement system that combines a defined benefit plan offering lower benefits with a 401(k)-styled plan. This is referred to as a "hybrid" plan.

The provisions applicable to employees are complicated and too detailed to be discussed in this article. But a provision of immediate concern to retirees would limit cost-of-living adjustments, starting in April 2013, "to the annual percentage increase, if any, given to Social Security recipients in the most recent twelve month period."

If the initiative qualifies for the ballot and is passed by the voters, the provision limiting cost-of-living adjustments (as well as many other provisions that would reduce benefits of existing employees) would be immediately challenged in the courts. The great majority of legal scholars, including LACERA's Chief Counsel and the general counsel of CalPERS, firmly believe that retirement benefits of existing employees and retirees, including cost-of-living adjustments, are vested benefits that cannot be taken away. Our courts in California have held on numerous occasions that attempts to reduce benefits of employees and retirees violate the "impairment of contracts" provisions of both the California and United States Constitutions. There is, however, a minority view held by some attorneys that retirement benefits could be reduced under some circumstances.

RELAC will carefully monitor future developments and keep you advised of the status by posting updates on the RELAC website: www.relac.org.

As always, RELAC will work diligently to keep you informed of attempts to reduce your benefits and to protect your rights at all times.



**RELAC
NEWSLETTER**
Vol 47- Jan/Feb 2012
Number 1

Retired Employees of Los
Angeles County 1000 S.
Fremont Ave. Unit 15,
Alhambra, CA
91803-8802
(626) 308-0532
(800) 537-3522
Fax (626) 308-2901
E-mail: admin@relac.org

Board of Directors

President

Bill de la Garza

Vice President

David L. Muir

Secretary

Mary K. Rodriguez

Treasurer

Edward C. Morris

Past President

Greg Walia

Members

Mary Lou Bangar

Donald Fandry

Martin Golds

Raymond R. Guyovich

J.P. Harris

George Hernandez

Alice Prouty

Marianne Reich

Diane Sandoval

Jason H. Williams

Emeritus

Dave E. Kalinge

Editor: Martin Golds
Copyright © 2012 by
RELAC This information
presented in your RELAC
Newsletter is believed to
be from reliable sources.
However, no responsibility
is assumed by RELAC or
the writers for inaccuracies
in the articles as published.

Office Hours
9:00am - 4:00pm
Monday - Thursday
Closed Friday,
Saturday, Sunday &
Public Holidays
website:
www.relac.org

**Golf
News**

By Gil Sandoval
RELAC Golf Director



**Diamond Bar
Golf Tournament
Dec. 5, 2011**



The day was cool and windy and the course play was difficult. So much so that the Golf Committee is going to take up change in the configuration of the holes to accommodate seniors and the ladies to make it more suitable to our type of play. The "A" flight was an easy win for Tom Hoagland as his net 72 was 3 strokes up on Doug Biro and Gary Hartley. The "B" flight was the same for Henry Villasenor his net 73 was 2 strokes better than Don DeBok who was one better than new comer Leo Taylor. A close race was the "C" flight as Bob Kubo won with a net 71, one ahead of Alan Nicholson. John Wehrly tied with Alan but lost out on a card off. The "Women's " flight was a win for Charlene DeBie, who won in a card off with Sue Danbara; they both had net 81s.

Diamond Bar Results:

"A" Flight Winner (19 and under)

1st Tom Hoagland (72)
2nd Doug Biro (75)*
3rd Gary Hartley (75)

"B" Flight (20-27 Handicaps)

1st Henry Villasenor (73)
2nd Don DeBok (75)
3rd Leo Taylor (76)

"C" Flight (28 up Handicap)

1st Bob Kubo (71)
2nd Alan Nicholson (72)*
3rd John Wehrly (72)

Ladies

1st Charlene DeBie (81)*
2nd Sue Danbara (81)

*Winner in a card off.

Closest to the Pin on Par 3's

Men # 3-Michael Hernandez
9-Doug Biro
13-Leo Taylor
#17-Steve Harris

Women # 3-No Winner
9-No Winner
#13-No Winner
#17-No Winner

NEXT TOURNAMENT - Monday, Jan. 30, 2012
Los Amigos Golf Course 8:00 a.m. start
Entry Deadline: Jan.12, 2012

**RELAC
Golf Entry Form**



Los Amigos Golf Course
7295 Quill Drive
Downey, CA 90242

Monday, January 30, 2012

Please Print

1. Name _____

Address _____

City _____ Zip _____

Phone _____

Fees: \$32.00 PER GOLFER - CART EXTRA

If possible, place me in a foursome with below listed golfers. Addresses of all golfers MUST be included. If possible, we would prefer an Early _____ Late _____ starting time.

2. Name _____

Address _____

City _____ Zip _____

Phone _____

3. Name _____

Address _____

City _____ Zip _____

Phone _____

4. Name _____

Address _____

City _____ Zip _____

Phone _____

NOTE: Only ONE GUEST per member.
Enclose check for _____ golfers @ \$32 per Golfer.
Make checks payable to RELAC Golf. Mail entry
to RELAC GOLF, 1000 So. Fremont Ave., #15,
Alhambra, CA 91803-8802

**Entry Deadline
January 12, 2012
ALL CHECKS MUST BE
IN RELAC OFFICE**

For Office Use:

Date Rec. _____ Amt.\$ _____

Ck# _____

Members Spotlight



VALENTINE DRAWING

Yea RELAC Members!!! It's that time of year again. In a gesture of our appreciation for your continued support, all members are eligible for a Special Valentine Drawing of 40 prizes; \$25.00 each. To participate, complete the coupon below and mail it to the RELAC Office, 1000 South Fremont Avenue, Unit 15, Alhambra, CA 91803-8802. Coupons must be received no later than February 6, 2012.

Valentine Coupon

Please Print Clearly

Name _____

Address _____

City _____

State _____ Zip _____



VOLUNTEER EXPERIENCES

Submitted by Christine Core, Norwalk, CA

For the last two years of my retirement (I retired in 2006) I have been blessed to visit hospitals and assisted living facilities with my therapy dog. My golden retriever, Miss Charli Belle, showed signs when she was only six months old that she would be a candidate to become a therapy dog. When she was nearly a year old, I enrolled her in a therapy dog training class in La Habra and went through the eight-week training and certification course with her; teaching her more than just obedience, but also how to not over-react to loud noises and sounds that are not normally a part of everyday life but are common in hospitals. Our therapy dog team, the Pet Prescription Team, has over 300 members who share their dogs in many types of facilities. It is so rewarding to reach out to those who are hospitalized had to give up their dogs and also those who have a facility that does not allow them. Other facilities our team members visit are mental health facilities, libraries where the kids read to the dogs, hospice locations, children's oncology and a brain-injured children's school. I know that many retirees have dogs – and most are well behaved and would make good therapy dogs. If you think your dog might have what it takes to become a therapy dog, I encourage you to pursue the training and certification process. My particular Volunteer Service Organization contact is Krystal Emery at (562) 694-8090. Please feel free to contact her for more information.



The Los Angeles County/University of Southern California Medical Center Auxiliary is Looking for Volunteers

The LAC+USC Medical Center Auxiliary also known as CARES, a California nonprofit corporation, provides financial support and volunteer services. Its primary mission is to benefit patients by adding comfort to their hospital stay and provide services that help them and their families access healthcare. Help CARES make a difference in the lives of the patients by joining our dedicated team of volunteers. We have a variety of programs and volunteers are needed in every area:

CARES Child and Family Program offers free childcare to patients' children and to their families' children, thus facilitating their access to health care.

The **Pediatric Reading Program** provides books and magazines for the benefit of children who are inpatients or outpatients at the hospital. Not only are volunteer readers welcome, donations of children's books are extremely appreciated.

Patient Relations Visitors go to the bedside of patients offering conversation and providing complimentary personal hygiene items, reading material, etc.

CARES operates **shops** on the grounds and profits are dedicated to patient programs. Volunteers are needed to help in both the Gift Shop and the Treasure Trove Thrift Shop. The Thrift Shop sells previously owned items to the community and employees. Many of the clothing items are provided directly to needy patients and their families. Men's pants and shoes are the most requested items. All donations are greatly appreciated and are tax deductible. In order to facilitate an easy drop-off, please call 323-226-6941 between 10 a.m. and 3 p.m., Monday – Friday. Stay and shop after your delivery! If you care to make a tax-deductible contribution to CARES, please make checks payable to: CARES, 1200 North State Street, Room 1900, Los Angeles, CA 90033. Contact Margie Dolinski, 323-226-6941 for additional information or check the LAC+USC Medical Center Website: lacusc.org.

RECREATION COMMITTEE PLANS FOR SUCCESSFUL YEAR IN 2012

by Mary K. Rodriguez
Chair, Recreation Committee

Hello everyone! Even though the 2011 holiday season is over, I would like to wish all of you a very happy, healthy and prosperous 2012.



I am looking forward to another successful year for Recreation Committee activities. We are in the process of acquiring dates for both the Hollywood Park and Santa Anita "Day at the Races" events and the RELAC Night at Dodger Stadium. Please contact the office if you are interested in participating in another casino day trip. If there is a positive response, we will get the ball rolling.

A special thanks goes to Ed Clifton and the RELAC RV Club for inviting me to their annual Christmas Party on December 1, 2011. The company was great, the food was terrific and I had a very enjoyable time. Gil Sandoval, the RELAC Golf Director, is diligently working on 2012 golf tournament dates. Thank you Gil!

Looking forward to seeing you all at our special events next year! Look for details in upcoming issues of the Newsletter.

Pension Reform Plan cont. from p.5

6. Limited Post-Retirement Employment – All Employees

Retired public employees would be limited to working 960 hours or 120 days per year for a public employer. This limit currently applies to all LACERA retirees. In addition, retired employees who serve on public boards and commissions would be barred from earning retirement benefits for that service.

7. Forfeiture of Pension Benefit by Felons – All Employees

Public officials and employees would forfeit pension and related benefits if they were convicted of a felony in carrying out official duties, in seeking an elected office or appointment, or in connection with obtaining salary or pension benefits.

8. Retroactive Pension Increases Prohibited – All Employees

Pension enhancements could be applied prospectively only, not to service already performed.

9. Contribution Holidays Prohibited – All Employees and Employers

Employers would be prohibited from suspending employer and/or employee contributions necessary to fund annual pension costs.

10. Purchase of "Airtime" Prohibited – All Employees

"Airtime" refers to service credit for time not actually worked. The purchase of "airtime" would be prohibited.

continued on p.15



RV Outing Notes

Ed Clifton
Coordinator of RV Club



Nineteen rigs enjoyed our outing at Shadow Hills RV Resort in Indio. The weather was uncomfortably warm for a couple days (like in the 90's) but if you stayed out of the hot sun, it really was not so bad. Most of the time there seemed to be a little breeze blowing – which made it a bit more bearable.

As usual, our Wagon Masters, Jesse and Phyllis Murph, did an outstanding job. A lot of good food was enjoyed at our two breakfasts and also at our potluck on Tuesday evening. Our golfers enjoyed an outing to the local golf course on Tuesday morning. A few of our campers made their pilgrimage to the casinos so they could bolster the economy. On Wednesday evening we had our ladies night out at a local Mexican restaurant where we had a good time. Service could have been a little faster but all-in-all we enjoyed our meal.

The gas cards were won by Bill Dibble and Norm Nelson. Thank you RELAC!

Our next outing will be January 23-24-25, 2012 at the Pechanga RV Resort in Temecula (the coupon was published in the November/December issue of the Newsletter). Following that, we will be going to the Golden Village Palms RV Resort in Hemet on March 19-20-21, 2012 (coupon follows).

OUR 2012 CAMPOUTS ARE AS FOLLOWS:

Pechanga RV Resort, Temecula	January 23-24-25
Golden Village Palms RV Resort, Hemet	March 19-20-21
Lake Elsinore Marina RV Resort, Lake Elsinore	May 21-22-23
Chula Vista RV Resort, Chula Vista	September 10-11-12
Shadow Hills RV Resort, Indio	November 5-6-7

R.V. CAMPOUT RESERVATION

CAMPGROUND:	Golden Village Palms RV Resort 3600 West Florida Ave., Hemet, CA 92545 (866) 477-6154		
DATES:	March 19, 20, 21, 2012 (Early Day March 18, 2012)		
Names:	_____ (Last) (Retiree) (Spouse)		
Address:	_____ (No.) (Street)		
City:	_____ (State) (Zip)		
Telephone:	() _____		

DEADLINE: FEBRUARY 17, 2012

Cost:	\$120.00 for three days; \$39.00 extra for additional day. Reserve early day through Wagon Master.
Make checks payable to	Jeanne Klauk, Wagon Master, and mail to: Jeanne Klauk 11825 Maidstone Avenue, Norwalk, CA 90650
Phone:	(562) 868-6215

Motor Home	_____	Trailer	_____	Length	_____
------------	-------	---------	-------	--------	-------

Touring With Great Western

626-578-1161 • 800-344-7090

RELAC DISCOUNT APPLIES !



Golden Nugget LAUGHLIN

Three Day Motorcoach Tour

Departs: March 13, 2012

Double: \$123.00 per person Single: \$148.00

TOUR INCLUDES:

- * Deluxe Motorcoach Transportation
- * 2 Nights Hotel Accommodations
- * \$5.00 Food Credit *Fun Book

* Tax & Baggage Handling* Drivers Gratuity

MONTEREY BAY

Holiday

MONTEREY - CARMEL - PACIFIC GROVE

DEPARTURE: May 31, 2012

Dbl Occupancy: \$699.00 per person Single: \$949.00

TOUR PRICE INCLUDES:

- * Deluxe Motorcoach Transportation
- * Amtrak - L.A. - Monterey (Roomette Accommodation)
- * 3 Nights Hotel Accommodations
- * 7 Meals - 3 Breakfasts, 2 Lunches, 2 Dinners
- * Sights: Aquarium - Carmel - 17 Mile Drive and Monterey Bay National Marine Sanctuary
- * Guided Tours of Monterey & Pacific Grove
- * Roaring Camp Rail Excursion
- * Driver's Gratuity
- * Tax & Baggage Handling

AMTRAK



Pacific Coast Panorama

9-Day Cruise - Motorcoach - Rail

Island Princess • Coast Starlight

Departs May 11, 2012

LOS ANGELES - SAN FRANCISCO

VICTORIA - VACOUVER - SEATTLE

Tour Price Includes

- 5-Night Cruise - *Island Princess* (all meals and entertainment aboard ship)
- Two Night Seattle Hotel Accommodations
- One Way Amtrak Seattle/Los Angeles
- Seattle City Tour • Dinner at Seattle Space Needle
- Pike's Market
- Port Charges and Government Fees
- Deluxe Motorcoach Transportation
- All Transfers • Tax & Baggage Handling

Double Per Person

FROM \$1899.00

For Sale



MEMBERSHIP AT MOUNTAIN LAKES RESORT, LYTLE CREEK, CA – Affordable price of \$3,000 or best offer. Call (626) 810-9816 or (626) 261-1009. Ask for Joanne.

CEMETERY NICHE, FOUR CAPACITY – Prestigious Forest Lawn, Cypress, Orange County, CA. Visit: Mausoleum Columbarium of the Blessed #N-1446, garden setting, lots of light, convenient. Real value is \$4,600; will sell for \$3,500 or best offer. Call (951) 845-1094.

CEMETERY LOT – Beautiful location, Grave 3, Lot 476 in the "Maple Lawn" Section near the main gate of Oakdale Memorial Park in Glendora, CA. Retail price is \$5,200; asking \$3,500 plus transfer fee. Call Barry at (760) 961-0917.

CEMETERY LOT – Rose Hills Memorial Park, Whittier, CA, Garden of Affection – Grave 3, Lot 3455. Asking \$3,500 plus \$200 transfer fee. Final price. Contact Andrew at (562) 897-2697.

CEMETERY LOT – One plot, Rose Hills Memorial Park, Whittier, CA, Garden of Benediction, Lot 2691, Burial Section 17, Entrance Gate 1, Grave 4. Asking \$4,000 or best offer. Will pay \$200 transfer fee and \$200 endowment fee. Call Annie at (626) 398-6337 or Deborah at (909) 598-2257.

CHINA CABINET – Lighted with glass shelves, solid cherry wood, superb craftsmanship, like new, in two sections for stacking. Beveled glass in upper door and view panels. Lower section has lockable storage cabinets plus felt lining for silverware. Overall size when stacked 72" wide x 17.6" deep x 84" high. Asking price \$850. Call (310) 326-0893.

STORY AND CLARK SPINET PIANO – From the 1940's, \$200. **MAPLE FRENCH PROVENCAL CHINA CABINET** – From the 1930's, approximately 4 ft. x 6 ft. high, \$200 or best offer. **ANTIQUE, SOLID STEEL PATIO GLIDER** – Asking \$50. **TWO STEAMER TRUNKS** – From the 1920's, \$20 each. **TWO CAR RAMPS** – Asking \$10. **LEGO TRAIN SET** – Asking \$25. Contact Anne at (818) 246-1132.

BRUNSWICK POOL TABLE – Very good condition, complete with pool cues, balls and stools. Asking price \$600. Call Araceli (310) 821-9628.

You Can Choose to Receive The Newsletter Via E-mail



You may not have requested to have your Newsletter e-mailed in time for this issue. But you can still choose to have future issues delivered directly to your computer. And you can still choose to participate in a single issue trial in which you receive the Newsletter both via e-mail and in the printed version.

By filling out the coupon, to the right, and sending it to the RELAC office you can have the next issue, the March/April issue, e-mailed. You can make the decision to try e-mail at any time and, if you opt for e-mail, you can change your mind at any time and switch back to the printed version.

You have probably heard that the Post Office will be cutting back on service. With e-mail delivery you are assured of receiving your Newsletter on time. To mail in coupons for events you want to attend you can print the coupon's page.

REQUEST FOR E-MAILED NEWSLETTER

Name _____

E-mail Address _____

Check one:

☐ Beginning with the next issue send me each issue of the RELAC Newsletter via e-mail.

☐ Send me the next issue of the RELAC Newsletter both via e-mail and in the printed version for the purpose of comparison.

Mail to: RELAC
1000 So. Fremont Ave., Unit 15
Alhambra, CA 91803-8802

Or e-mail: admin@relac.org

HAPPY Valentine's DAY

VISA CARDS



2.99%
APR

intro APR* for 12 months on purchases and balance transfers!

- No Annual Fee
- Real Time Fraud Monitoring**
- ZERO Liability**
- Identity Theft Assistance**
- and so much more!

Southland
CREDIT UNION
Celebrating 73 years

Membership is subject to eligibility. All new accounts will be verified through ChexSystems and are subject to credit approval. *APR=Annual Percentage Rate. 2.99% introductory APR for one year, based on your creditworthiness, available on Platinum cards only. After that, your APR will be 8.99% - 11.99%. This APR will vary with the market based on the Prime Rate. Classic cards APR of 14.99% - 16.99% based on your creditworthiness and will vary with the market based on the Prime Rate. Balance transfer, cash advance, foreign transaction, and other fees may apply. Offer is good through 12-31-11. Terms, features, programs, and conditions subject to change. **Program conditions and restrictions may apply.



www.SouthlandCU.org • 800.426.1917



News From Our International Members

Fellow RELAC member Joe "Mango" Race sends regards from Saipan:

Although we are part of the United States (near Guam), many consider our beautiful island an international location, way out in the Pacific Ocean. It has its own U.S. Zip Code and the regular residents are U.S. citizens; but many of the population are foreign workers and tourists from the Philippines, Japan, China, Russia and Korea. My children and grandchildren love it here because of the pristine beaches and natural resources – and the diversity of the population groups. It is a grand experiment in different people living, working and socializing together and often intermarrying. Saipan is a friendly island – come for a visit! I retired from the Los Angeles County Sheriff's Department and I am now writing fulltime – my website is www.josephrace.com. My novels include many of my adventures in Micronesia, Kosovo and Bosnia. Island wise man sez: "At the end of the day, IT IS WHAT IT IS !!!" or a brother islander would say "No matter where you go, there you are . . ."

William Wingard, retired from the District Attorney's Office, lives a fascinating life in Nairobi, Kenya, East Africa

My wife, Sondra, and I have been living here in East Africa for some 21 years. We started in Dar Es Salam, Tanzania in October 1990 but because they had no provision for us, a retired person to simply live there, we had to move here in Nairobi, Kenya. Since being here we have visited Addis Ababa, Ethiopia, Johannesburg, South Africa and have made two trips to California. Here in Kenya we have visited any number of places from Mombasa to Eldoret, Nakuru and Naivasha. At Naivasha is Elsamere Conservation Center which is our favorite hide-away for a week or so each June or at other times. If you just want to relax in peace and quiet and be catered to, doing nothing but resting, reading, walking, eating, and bird-watching and the like, this is the place.

Besides a variety of birds we have so far seen hypos, mongoose, giraffes, zebras, monkeys including the Black and White Colobus Monkeys. After dinner or about 9 p.m. they have Askaris (guards) who escort us back to our cottage. From there we watch the hypos eating the fresh grass. They will come up from Lake Naivasha after dark so the Askaris have to keep track of them. The other animals are no problem.

Wherever we visit we take the cameras and binoculars and Sondra takes her bird book and sometimes her book of animals or mammals for reference. There is a saying when visiting places like Elsamere, "Hell's Gate" down the road, Nairobi Game Parks, nature walks and such: "Take nothing but pictures, leave nothing but footprints."

The language here is Swahili and English as well as some 20 or more tribal languages, Gujarati, Panjabi and other Indian tongues. German and Italian are largely spoken in Malindi and Lamu. Unfortunately, I have all but lost most of my Spanish since being here.

The primary money is the Shilling. The current rate of exchange to the U.S. dollar has been in the high 90's. The rate was 23 and 25 when we arrived 21 years ago. Unfortunately, it has been noted that when the rate of exchange goes up the prices go up, but when the rate goes back down the prices do not go down. This can be very difficult for the average Kenyan.

The housing market has apparently been fluctuating considerably. This I noted in the newspapers and TV. We have our own three bedroom apartment a short

distance from City Center so not having to move or buy we do not get too concerned except maybe to find accommodations for someone visiting for a short while.

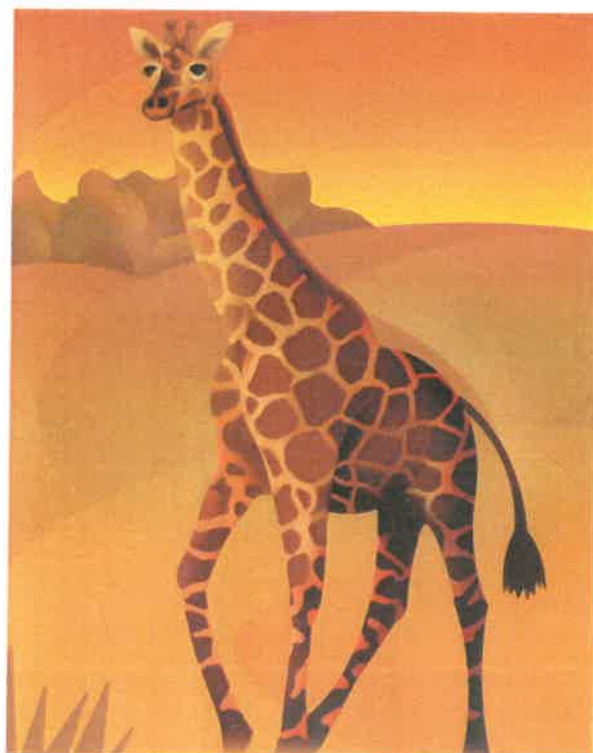
With regard to health care we have several adequate hospitals and doctors, some more than others. My wife and I have accumulated several very good doctors such as an Ophthalmologist, a Chest Specialist, Cardiologists and Dentist. We have a Consultant Physician and Rheumatologist and a Microbiologist for Tropical/Travel medicine as well as a complete Audiology Center. The prices for these doctors range from \$15 to \$30 for a consultation not necessarily including any treatment or medicine. You just have to remember to send the bills and receipts back to Blue Cross who may or may not pay it. It is also best to use your Visa card as proof of payment.

Where you might be interested in entertainment they have numerous movie theaters but we hear nothing good or worthwhile in the English films. We understand there are many sporting events that you might want to attend including Rugby, Horse Racing and Marathons.

Kenya does not have the smog conditions that Los Angeles has. Many of the hotels here will have air conditioning, especially if you request it. Weather-wise we have two climates, hot and cold. The long rains are around April to June. The short rains come in October to December. Nothing is too much or too little depending on the time of year.

Visiting the many game parks, museums, nature walks and the Indian Ocean are among the primary entertainment. Then by all means there is the shopping for whatever - foods and sweets, clothes both native and Indian, even sea shells.

For transportation, there are several car rentals and cars for hire as well as numerous taxis. There are buses and the all mighty Matatus which only the brave will travel. Then, as all tourists learn, there are always the legs for walking.





Letters To The Editor

Thank you for the Pocket Calendar. However, I must say that I think it would be even better if it was a 2-year calendar.

*Phyllis Ogden
Visalia, CA*

Thank you very much for the Pocket Secretary. I use it to keep up with my plant fertilizing and watering. It is hung on my Fridge. Happy Holidays to the RELAC staff!

*Gloria Press
Los Angeles, CA*

I received my Pocket Secretary which I use all year for all my appointments and my Birthday Card as well. Thank you so much! I am now 91 years old and I am so grateful to all the people at RELAC who work so hard so that we can enjoy our retirement and be assured that our pension check will arrive each month.

*Alberta Rich
California, MO*

Thanks for the 2012-2013 Pocket Secretary. I like this calendar very much because it is a little larger than the others. I carry my calendar with me all the time. Everything I do is in that calendar – appointments, birthdays, etc. I most certainly enjoy it. Thanks again so much.

*Helen Whittecar
Merced, CA*

Other members were kind enough to take the time to send notes thanking RELAC for the Newsletter, Pocket Secretary, Birthday Cards and various other services. We would like to acknowledge their thoughtfulness and convey our appreciation to the following retirees:

Patricia Barton, Apple Valley, CA
Maurine Blakely, Glendale, CA
Fenna Cooper, Seal Beach, CA
Albertha Handy, Compton, CA
Evelyn Lee, Ventura, CA
Doris Lor, Chandler, AZ
Irene Marquez, El Paso, TX
Laura Mc Cain, Sebastopol, CA
Dolores Parrish, Diamond Bar, CA
Kenneth Pavlick, Ft. Lauderdale, FL
Grace Sanwo, Sacramento, CA

Welcome New Members

OCTOBER & NOVEMBER 2011



Assessor

Quiambao, Theresa

Animal Care & Control

Flores, Alejandro

Board of Supervisors

Olson, Joan Alexis

Chief Executive Office

Rain, Ann

Chief Information Office

Parker, Janette

Children & Family Services

Gray, Phineas Y.

Payne, Jacquelyn L.

Ruff, Cheryl

District Attorney

Creighton, Estella L.

Fire Department

Bailey, John

Bangar, Robert

Guerry, Richard

Health Services

Glenn, Rose Mewborn

Hazard, Jim

Mathis, Teresa

Timbol, Almendel C.

LAC/USC Medical Center

Randle, Mona

MLK Medical Center

Archie, Bonnie L.

Carter, Johnny

Olive View Medical Center

Tabatabai, Pourandokut

Probation

Faber, Druscilla

Warnick, Willis

Public Health

Martinez, Toni

Public Library

Fullmore, Evelyn

Public Social Services

Carter, Barbara D.

Malone, Alma

Murray, Dianne

Public Works

Rangel, Patrick

Rancho Los Amigos Rehab Ctr

Vo, Linh Duy

Registrar-Recorder

Page, Nancy

Sheriff

Beals, Terri L.

Cox, Carrie E.

Ernst, Robert W.

Hankerson, Jerry R.

Saunders, Bridget

Toguchi, Gladys M.

Wardlow, Jean

Superior Court

Jackson, Dale E.

Lorenzini, Martin

Department Not Designated

Blue, Kenneth

Bradley, Elcedo Louise

Burke, Mose E.

Frazier, Minnie

Thompson, Charles

Ward, Milagros

Young, Roylee

New Affiliate Members LACERA

Peterson, Michael

Morken, Eilene

New Associate Members

Bailey, Diana

Beals, Charles R.

Ernst, Alexandra H.

Faber, Lester

Flores, Laura M.

Gray, Marguerite S.

Guerry, Barbara

Hankerson, Gladys

Nelson, Paula

Payne, Ray L.

Quiambao, Sotero Jr.

Rain, Michael

Rangel, Marta V.

Saunders, Marc

Shepherd, Wanda

Tabatabai, Mehdi

Timbol, Therence

Members' Milestones

Congratulations to **Allen and Thelma Murphy** who celebrated their 67th Wedding Anniversary this year. Shortly after they met, Mr. Murphy joined the U.S. Navy. He was deployed to Normandy, France where he towed barges across the Atlantic for the landing on Normandy. Then, on to Okinawa where he rode out a typhoon. Once discharged, he returned to California where he and Thelma were married in 1944 in Pasadena, CA by a justice of the peace. Allen retired from the County Department of Animal Control after 33 years of service. They are the proud grandparents of three and great-grandparents of three.

IN MEMORIAM

This list includes retired employees, both RELAC members and non-members.

Animal Control

Pabst, Howard E.

Assessor

Barnes, Lois R.
Drake, Raymond J.
Lackman, Sylvia M.
Lindorfer, Norma J.
Malig, Alfredo L.
Mayberry, Tommie C.
Rhone, Dorothy M.
Zugliani, Richard L.

Auditor-Controller

Johnson, Herman L.
Pascua, Silvestre B.

Chief Executive Office

Crowder, Guy R.

Chief Information Office

Hunt, Marjorie L.

Child Support Services

Everage, Dolores C.
Gilchrist, Howard
Johnson, Earlene

Children & Family Services

Hackett, Lena E.
Jenkins, Hilda L.
Marin, Constance J.

House, Anita B.

Maloney, Barbara M.
Moland, Gerhard M.
Moreton, Janet M.

Collections

Ross, Rosalia

Community & Sr. Citizens Svcs

Sokolsky, Eric

County Counsel.

Larson, John H.

Data Processing

Camacho, Helen

District Attorney

Bootow, Dale B.
Compton, David P.
Esnard, R. P.
Henri, Jean J.
Swart, Howard M.

Engineer

Dobes, Milo J.
Hamamoto, Robert K.
Kingsland, Gladys E.
Pearson, Carl G.

Fire

Cornell, Charles C.
Greer, Robert L.
La Crosse, Kenneth A.
Liberty, Conrad A.
Lovers, Charles A.
Ward, Dwight E.
Yabu, Robert M.

Flood Control

Campbell, Robert E.
Rios, Albert S.

Forester & Fire Warden

Hager, Bill W.

Harbor/UCLA Medical Center

Brown, Charles E.
Farillas, Ernestina O.
Gaines, Gloria
Higuchi, Shizumi
Pragowski, Virginia
Searles, Alta E.

Health Services

Aral, Hilkat
Welch, Lester L.
Zendejas, Elvira S.

Health Services Administration

Morinishi, Ted H.
Rutledge, William E.
Salazar, Mercedes G.
Shepard, Leland W.
Stolba, Camilla

Human Resources

Nash, Dorothy

Internal Services

Bonwell, Hazel F.
Cross, Clea
Des Rosiers, Roger J.
Knott, Carl L.
Ruiz, Mike
Sandoval, Leroy
Thornton, James C.
Weinstein, Mortimer

King/Drew Medical Center

Mackey Jr., Elvin
Oh, Myung J.
Skyes, Lula B.
Smith, Mattie L.

LAC/USC Medical Center

Brown, Clarence
Conlin, Alexander P.
Dodd, Lewis C.
Greene, Joseph
Love, Lawrence
Paquet, Beverly
Vargas, Richard E.

LACERA

Starks, Gwendolyn

Long Beach General Hospital

Parker, Kent G.

Mechanical

Cobb, Washington H.
Dunn, Richard E.
Johnson, Archie L.
Jones, Ralph S.
Swayne, James L.
Walsh, Allan F.

Mental Health

Sullivan, Wallace

Municipal Court

Fried, Seymour (Culver City)
Gilmore, Miren (Antelope)
Lashmett, Eva P. (Alhambra)
Meloeny, Judith A. (South Bay)

Museum of Art

Nixon, Leon O.

Museum of Natural History

Hardeman, Wesley
Maloof, Caryl J.

Olive View Hospital

Collins, Kathleen O.
Frasier, S. D.
Johnson, Linda A.
Parker, Charles E.

Parks & Recreation

Blair, Thomas A.
Burns, William M.
Bynum, Durward C.
Hatcher, Eddie
Smith, Norman L.

Probation

Anderson, Ethel Y.
Barnhart, Susan
Callahan, Rosario
Cooper, Eilene E.
Frey, Marie S.
Imperial, Nancy N.
Moore, Michael H.
Parks, Anderson H.
Parsons, Randall J.
Van Marter, Claude L.

Public Defender

Ingwersen, Donald
Vaughan, A. J.

Public Health Program

Altizer, Anne P.
Elfont, Robert B.
Hong, Young H.
Kissam, Dorothea A.
Medina, Betty M.
Miseta, Nancy
Tamer, Selim M.
Walsh, Dolores A.

Public Social Services

Booker, Versie L.
Bowman, Alma R.
Brown, Artie N.
Castor, Ann O.
Chan, Yuk C.
Foster, Huxley
Gaston, Irmaray
Gonzales, Ortensia
Greenberg, Ruth S.
Jones, Mary L.
Jones, Rhonda F.

IN MEMORIAM

This list includes retired employees, both RELAC members and non-members.

Madhoosh, Sami
Pfarker, Billye
Richey, Mary E.
Rivera, Ethel
Sirotta, Mary L.
Stapler, Frances Y.
Starks, Consuelo F.
Twitchell, Theodore G.
Vos, Karen D.

Public Works

Betancourt, David C.
Hollingsworth, Sherley M.
Lee, Cecil B.
Morefield, Ennis E.
Ransfer, Collins M.
Smith, Paul
Swift, Paul A.

Rancho Los Amigos Hospital

Charles, Rozenia
Ellis, Constance L.
Fernandez, Santos
Kindig, Beverly A.
La Voie, Hanna J.
Le, Duc M.
Mason, Leon W.
Meredith, Elnora
Parris, Thelma M.
Salazar, Nellie C.
Venaglia, Joseph

Reg.-Recorder/County Clerk

Barnard, Diane J.
Hamilton, Charles

Sheriff

Anderson, Robert J.
Arias, Angel A.
Asendorf, Charles G.
Blackmore, Lloyd V.
Briggs, David M.
Briscoe, Kenneth W.
Brown, Gerald D.
Callahan, Patrick D.
Cederlind, Wesley W.
Clark, John H.

Coffin, Douglas S.
Cotton, Leroy
Edler, Alan D.
Eisman, Ronald Z.
Elverum, Erick B.
Geoffrion, Adolph J.
Gray, Richard L.
Kang, U. T.
Lancaster, Ronnie E.
Lehman, Mildred D.
Mareina, Marilyn L.
Martin, Harry W.
Mayes, Leonard
McFadden, Donald J.
McGhee, Leon B.
Ostermeier, Andrew J.
Reid III, William H.
Rohrer, Jack L.
Shelnutt, Robert M.
Seitz, Joseph A.
Shepard, Larue
Sivard, Donald R.
Solano, Paul E.
Zalba, Arthur R.

Small Craft Harbors

Quinn, James W.

So. Coast Air Quality Mgmt.

Bope, William G.
Lamb, Dorothy G.
Mac Beth, William G.

Superior Court/County Clerk

Corcoran, John J.
Duval, Marian J.
Ford, Maria
Jackson, Edward M.
McIntyre, Audrey S.

Treasurer & Tax Collector

Michael, Wanda F.

Department Not Designated

Cain, William E.
Lindblad, Eileen
Porche, Iris A.
Toten, Julia I.

HOLIDAY MEMBERSHIP MEETING ATTRACTS LARGE TURN-OUT

RELAC's annual Holiday Entertainment General Membership Meeting drew over 200 members and guests to the Diamond Bar Center on December 5. The program featured carols by the Citrus College Women's Ensemble. The audience joined in singing a number of the songs of the season.

The distribution of special gifts added to the festive atmosphere of the occasion. These included gas cards donated by Southland Credit Union, sumptuous fruit baskets donated by Pacific Group Associates and candy and gift certificates provided by RELAC.

The meeting was held in Diamond Bar because the traditional location, the meeting room at St. Sophia Greek Orthodox Cathedral, is undergoing renovation.

An important piece of RELAC business was conducted at the meeting. The members who were present voted to approve a number of amendments to the organization's bylaws. The text of the proposed bylaws amendments which were voted on and approved can be found on the RELAC Website at www.relac.org

Dave Muir, Chair of the Legislation Committee and the newly elected Vice President, reviewed Governor Brown's public pension reform proposals which are now being considered by the California legislature. He also discussed reforms which have been proposed as initiatives to be placed before the voters. The audience was reminded to avoid signing petitions for the purpose of placing on the ballot those initiatives which contain provisions which are contrary to the well-being of those retired from public employment. Detailed information about these proposed initiatives can be found on the RELAC Website and on page 6 of this Newsletter.

Pension Reform Plan cont. from p.9

11. Increased Pension Board Independence and Expertise – CalPERS Board

Two independent, public members with financial expertise would be added to the CalPERS Board. As to other pension systems, Brown's proposal states: "And while my plan starts with changes to the CalPERS board, government entities that control other retirement boards should make similar changes to those boards to achieve greater independence and greater sophistication."

12. Reduction to Retiree Health Care Costs – State Employees

More state service would be required in order to qualify for health care benefits at retirement. New employees would have to work for at least 15 years to be eligible. They would not be eligible for maximum benefits until they worked for the state for 25 years. Further, all retirees would have to look to Medicare to the fullest extent possible. The Governor's plan encourages local governments to make similar changes.





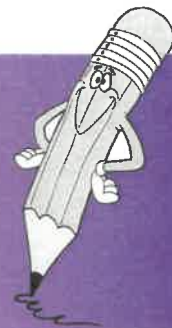
RETIRED EMPLOYEES
of LOS ANGELES COUNTY
1000 South Fremont Ave. Unit 15
Alhambra, CA 91803-8802

Return Service Requested

NON-PROFIT
U.S. POSTAGE
PAID
PERMIT #66
PASADENA, CA

General Membership Meeting

Mary K. Rodriguez, Chair, Program Committee



TUESDAY, MARCH 27, 2012

Descanso Gardens

1418 Descanso Drive
La Canada Flintridge, CA 91011

Free Admission to Gardens

Tram Tour available at 1:00 p.m. - \$4.00 per person

9:00 a.m. - Complimentary Refreshments

10:00 a.m. - Meeting Begins

Presentation by Sergeant Joshua Mankini

Los Angeles County Sheriff's Department

Identity Theft and Home Security

Retiree Information from LACERA and RELAC

~ DOOR PRIZES ~

Please bring your RELAC Membership Card



IMPORTANT!

*Are you moving?
Did you change your
name?*

Cut out the address
portion of this
newsletter, correct it
and mail to:

RELAC
1000 S. Fremont Ave.,
Unit 15 Alhambra, CA
91803-8802 or

Phone:

(800) 537-3522

(626) 308-0532

Fax: (626) 308-2901

Email:

admin@relac.org

website:

www.relac.org

Note: It is important
that you mail this to
RELAC or contact
RELAC by phone as
we DO NOT receive
your address change
from LACERA.

DRIVING DIRECTIONS:

From 210 Fwy –North or South

Going either North or South on the 210, exit at Angeles Crest Hwy. Proceed South on Angeles Crest to Foothill Blvd. Turn Right on Foothill. Turn Left at Verdugo Blvd. Turn Left at Alta Canyon Rd. Turn Left at Descanso Drive. Entrance is on your Right side.

From 2 Fwy – North

Take the 2 North, exit at Verdugo Blvd. Turn Right onto Verdugo. Turn Right at Alta Canyon Rd. Turn Left at Descanso Drive. Entrance is on your Right side.

