

President's Message

by Bill de la Garza



Dear Friends,

Well, the holidays and times for reflection are over and its time to get back to work. I just can't say enough about your RELAC Board members who volunteer their time to serve you, the retirees of Los Angeles County. I'm very proud to be a part of such a dedicated group of hard working individuals.

Our year got off with a good start with a very successful Annual Installation Luncheon held at Almansor Court in Alhambra. Sheriff Leroy Baca served as the Keynote Speaker and Installation Officer. Lee did a great job and was given a standing ovation. Kudos to Ray Guyovich and his Special Events Committee for a job well done.

At our first Board of Directors meeting on January 27th we reviewed and approved our committee assignments for 2011. RELAC committees are very important in that they are the vehicles that provide the services to our members, such as the Newsletter, plans for local and regional meetings, recreation activities such as golf tournaments, Dodger day, days at the races, picnics, casino tours and other recreational programs.

Providing information and keeping our members informed on legislation that affects our pension and medical plans is a committee function and a very important priority. Read the Newsletter and RELAC will continue to keep you informed.

I apologize if I seem redundant, but I feel that one of the most important messages I can share with my RELAC retirees is related to keeping healthy and enjoying retirement. They are: See your Cardiologist, Exercise Daily, and Eat Healthy.

As customary, and until next time, I leave you with this thought:

"Be always at war with your vices,
 at peace with your neighbors, and
 let each new year make you a better man."

BENJAMIN FRANKLIN



Retirement Board Approves Cost of Living Increases

In 2010 the Consumer Price Index (CPI) for All Urban Consumers for the Los Angeles-Riverside -Orange County area increased 1.3%. The Government Code provides that, in determining Cost of Living (COLA) increases in retirement allowances, CPI percentage is rounded up or down to the nearest one-half percent; that brings this year's increase to 1.5%. In addition, to the extent that funds are available in COLA Accumulations, they are added to the COLA increases up to allowable maximums. (COLA Accumulations are amounts saved in prior years in which the rounded CPI exceeded the allowable maximum retirement allowance increase.)

The total amounts of increases, for members and for eligible beneficiaries, as determined by the respective retirement plans and COLA Accumulations are as follows:

Plan A	
retired prior to March 31, 1988	3%
retired April 1, 1988 to March 31, 2005	1.9%
retired April 1, 2005 to March 31, 2011	1.5%

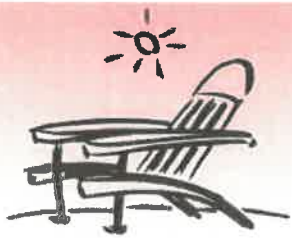
Plans B, C and D	
retired prior to March 31, 2007	2%
retired April 1, 2007 to March 31, 2008	1.7%
retired April 1, 2008 to March 31, 2011	1.5%

Plan E	
Retired June 4, 2002 to March 31, 2011 up to 2.0%	

The exact amount of the increases will vary with the number of months of active service after June 4, 2002.

For all of the details you may go to the RELAC Website at www.relac.org. where you will find the LACERA document on which the Board of Retirement acted.

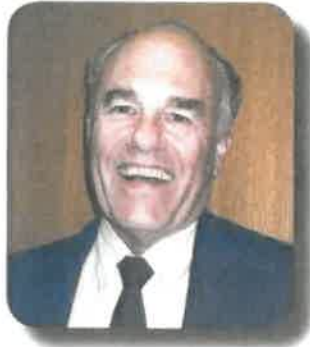
Retirement Board



by Ed Morris
Alternate Retirement Board Member

The officers elected by the Board of Retirement for the year 2011 are:

Les Robbins, President, Simon Russin, Vice President. Yves Chery, Secretary. Shawn Kehoe from the Sheriff's Department was elected for a three year term effective January 1, 2011 as the Alternate Safety Member. Will Pryor from the County Fire Department is the Safety Member.



THE MEDICARE PART B REIMBURSEMENT PROGRAM FOR 2011 HAS BEEN APPROVED BY THE BOARD OF SUPERVISORS.

The standard Part B premium will increase to \$115.40 for the newly eligible and all other individuals who are paying their premiums through a quarterly billing process. Those members paying their premiums through their Social Security benefit will not be affected. Their Part B premium will remain unchanged at either \$110.50 if newly eligible in 2010, or \$96.40 if eligible prior to January 1, 2010.

The Mercer Communications staff and health carrier representatives met and planned the next wellness program. It will be called Staying Healthy Together. The following topics were discussed: Goals of the Staying Healthy Together Program 2011, Themes for 2011-2012 Staying Healthy Together Program and Topics for Spring/Fall 2011 half-day workshops.

Public employee pensions will be the target of proposed legislation and ballot initiatives. Look for reports and analysis in future newsletters and on RELAC Website www.relac.org

Investments Board



by Diane Sandoval
Retiree Representative,
LACERA Board of Investments

Recently one of RELAC's members, former Supervisor Pete Schabarum, asked if the LACERA Fund had recovered from the credit crisis that hit the financial markets in October 2007. Since I don't keep a file of prior quarterly performance reports, I asked Lisa Mazzocco, LACERA Chief Investment Officer, the same question. Although it may seem on the surface to be a simple question; unfortunately it is not. As we all know time and the financial markets are not static and one cannot simply compare the Fund's market value as of September 2007 to the market value as of December 31, 2010 to determine the answer. That cash flows in and out (such as benefit payments to retirees) must be taken into account during the time period in review.



With all that said, Ms. Mazzocco reviewed the quarterly performance reports, and determined the Fund's peak market value was \$41.4 billion in September 2007. LACERA's market value at year end (December 31, 2010) was approximately \$37.6 billion. She calculated an adjusted market value of approximately \$40.4 billion by estimating the cash flows, based on the annual report for each time period falling between September 2007 and December 31, 2010. Thus the Fund is approximately \$1 billion below its peak value as of December 31, 2010. This is great news considering the continued volatility in the financial markets.

By now you should have received a copy of the LACERA Popular Annual Financial Report for the year ended June 30, 2010. I invite you to read it cover to cover. It highlights LACERA's accomplishments for the fiscal year. The Report also summarizes pertinent financial information you may find interesting. It should be noted that LACERA has received awards from the Government Finance Officers Association of the United States and Canada (GFOA) for the past twelve years for conforming to the highest standards for preparation of state and local government popular reports. Congratulations to the LACERA staff for a job well done!

As always, thank you for your support and for allowing me to serve as your representative on the LACERA Board of Investments.



REGIONAL ACTIVITIES

by Diane Sandoval
Chair, Regional Support Committee

At our recent Annual Installation Luncheon many of you asked if RELAC is planning to hold a meeting in Las Vegas. I am happy to say the answer is YES! The committee selected the Golden Nugget Hotel & Casino as the site for our Luncheon Meeting. Continue reading for important details regarding this meeting.

The date has changed from Thursday, March 31, 2011 to Thursday, May 19, 2011. PLEASE NOTE THIS CHANGE ON YOUR CALENDARS.

Location of Meeting:

Golden Nugget Hotel & Casino
129 East Fremont Street
Las Vegas, NV 89101

Cost of Luncheon - \$25.00 per person

Choice of one of three entrees listed below.

Teriyaki Sirloin Steak (grilled sirloin steak with stir fried Asian vegetables and steamed rice)

Chicken Marsala (mushroom marsala sauce and parmesan risotto)

Pesto Seared Salmon (served with roasted fingerling potato salad with sautéed vegetables)

All plated luncheon selections include salad, dessert and assorted rolls, butter, regular and decaffeinated coffee, premium hot tea selection and iced tea.

RELAC has confirmed Ms. Janice Golden, LACERA Assistant Executive Officer and RELAC Newsletter contributor, as our featured speaker. Ms. Golden has extensive knowledge in all areas of LACERA's operations and will share important information regarding our pension and medical benefits. In addition to this informative presentation there will be door prizes and our infamous game of chance wherein three attendees will reap the reward of bettors turned winners. We hope you take this opportunity to come and say hello to old friends and co-workers while enjoying a delicious lunch.

If you are interested in attending, please complete the reservation form below and send it to the RELAC office with your check payable to RELAC by May 9, 2011. Please note tickets will be given out at the door. Requests for a refund of luncheons paid must be received by the RELAC Office no later than May 10, 2011.

Why not plan to stay at the Golden Nugget Hotel & Casino?

RELAC has negotiated great room rates for anyone interested in staying at the Golden Nugget Hotel & Casino. The cost per guestroom in the Carson Tower is \$49.00 plus applicable state and local taxes per night Monday through Thursday, single or double occupancy. If you extend your stay, the cost will be \$89.00 per night per guestroom plus state and local taxes Friday and Saturday.

Interested in Upgrading? Check out these guestroom rates!

Guestrooms in the Gold Tower are available at a cost of \$59.00 plus applicable state and local taxes per night Monday through Thursday, single or double occupancy. If you extend your stay the guestroom rate for Friday and Saturday is \$99.00 per night plus applicable state and local taxes, single or double occupancy.

Guestrooms in the Rush Tower are available at a cost of \$79.00 plus applicable state and local taxes per night Monday through Thursday, single or double occupancy. If you extend your stay the guestroom rate for Friday and Saturday is \$119.00 per night plus applicable state and local taxes, single or double occupancy.

In order to obtain these guestroom rates – Simply call the Golden Nugget Hotel & Casino Reservation Department directly at (800) 634-3454 (toll free) no later than April 18, 2011 and say you are booking with RELAC 2011 code 1DL77C. Reservations received after this date will be at the prevailing rate available.

Plan for the General Membership Meeting March 22, 2011

by George Hernandez
Chair, Program Committee

If you will be attending the RELAC General Meeting at the Los Angeles County Arboretum, plan to pack a lunch, picnic basket, or dine at the Arboretum cafeteria before taking the tour of the grounds. By then spring would have sprung and the flowers and plants should be ready to display all their grandeur. Also, the peacocks will be strutting around displaying their beautiful, colorful feather arrangements. The baby chicks should also be out exploring their new world. Review the grounds on www.arboretum.org.

Possible Parking Problem

On another note, there will be some construction going on at the Arboretum and parking may be compromised. We don't expect any problem, but cannot predict the outcome of construction events. To be on the safe side, I would recommend carpooling to avoid any unscheduled mishaps if at all possible. An additional parking lot is available just south of the main parking lot and tram service will be available if parking is limited. Look forward to seeing you all there.



Las Vegas Luncheon Meeting

May 19, 2011

Reservation Form

Golden Nugget Hotel & Casino
129 East Fremont Street
Las Vegas, NV 89101

Name _____

Address _____

City, State, Zip _____

Guest _____

No. of Tickets _____ @ \$25.00 = _____

Choice of Entrée:

Teriyaki Sirloin Steak _____

Chicken Marsala _____

Pesto Seared Salmon _____

Office Use:

Date _____ Amt Rec _____ Check No. _____

CHECKING



FREE Checking that Pays



1.00% APY*

There are only three free and easy requirements to qualify:

- 1 Use your Southland Check Card for at least 10 purchases per month
- 2 Make one ePay, Direct Deposit, or ACH debit transaction per month from your **FREE SUPER CHECKING** Account
- 3 Receive Southland eStatements



- Free Checking that earns 1.00% APY* with no minimum balance requirements
- ATM fees reimbursed up to \$20 per month
- Rewards Plus Program includes: Purchase Protection and Extended Warranty, Cash Rewards, Rebate Rewards, Savers Club, and so much more!
- Free Online Banking
- Free Identity Theft Insurance
- More surcharge-free ATMs than the largest banking network

Membership is subject to eligibility. All new accounts will be verified through Chexsystems and are subject to approval. *APY=Annual Percentage Yield. Rate quoted 2-15-11 and is subject to change without notice. To qualify, accounts must have eStatements, 10 Check Card purchase transactions, and one ACH direct deposit, debit, or ePayment per month to earn qualifying rate and ATM refunds. Qualifying rate, currently 1.00% APY, will be paid on balances up to \$50,000. On balances over \$50,000 a lower dividend rate will be paid, currently .10% APY. Non-qualifying accounts will receive a .10% APY dividend rate and no ATM fee refunds will be paid. Reimbursed ATM fees include third-party surcharges and Southland out-of-network fees. **Rewards Plus Program is a companion product to your Southland Checking Account and is available for a \$5 monthly charge. You must enroll for Rewards Plus to receive the benefits and insurance coverage offered. See Rewards Plus Program New Account Kit for complete program details.

www.SouthlandCU.org • 800.426.1917

LEGISLATION REPORT

by: *Dave Muir*
Chair, Legislation Committee

RELAC monitors pending legislation and works to see that the retirement rights of public employees are protected. RELAC also pursues legislation through efforts coordinated by the California Retired County Employees Association (CRCEA), of which RELAC is a member.



A bill of particular interest to RELAC, SB 414, was sponsored by CRCEA during the 2010 session of the California Legislature. The bill passed the Assembly and the Senate, but unfortunately was vetoed by Governor Schwarzenegger.

In Los Angeles County the alternate retired member on the Board of Retirement (Ed Morris) is allowed to participate fully in the Board's activities, the only exception being the alternate only votes on matters when the regular retired member (Bill de la Garza) is absent. In some counties the participation of the alternate retired member is severely limited by the regulations of the Board. SB 414 would have prohibited any board of retirement from limiting the participation of

the alternate retired member.

SB 414 also would have required the Board of Supervisors to move quickly with an election when there was a vacancy on the retirement board. Several years ago when Bob Stotelmeyer passed away, the retirees were left with no representation on the Board of Retirement for a substantial time. In vetoing SB 414, Governor Schwarzenegger stated that the bill "unnecessarily limit[ed]" the Board of Retirement and the Board of Supervisors.



RELAC DAY at Hollywood Park

by Mary K. Rodriguez
Chair, Recreation Committee



Hello everyone!

It will soon be time for us to return to Hollywood Park to enjoy another fun day at the races. This year's event will be held on Thursday, June 9, 2011.

Great News! The ticket price remains the same as last year - \$28.00 per person. This price includes admission, a great buffet lunch, fresh baked cookies for dessert and soft drinks. A program and valet parking are also included.

Please fill out the coupon below as soon as possible and send it along with your check. The reservation deadline is May 27, 2011. Your tickets will be mailed to you on June 1, 2011.

I'm looking forward to seeing you there. Hopefully, this year we will all be "BIG WINNERS" (we will surely have fun trying)!!!



RELAC DAY AT THE RACES

Hollywood Park Racetrack
Thursday, June 9, 2011

Name: _____

Address: _____

City/State/Zip: _____

Telephone: (____) _____

Number of Tickets _____ @ \$28.00 each

Total Amount Enclosed \$ _____

Enclose a check for your total payable to RELAC and mail to:

RELAC Races
1000 South Fremont Avenue, #15
Alhambra, CA 91803-8802
Must be received by May 27, 2011

For office use:

Date _____ Amt Rec \$ _____ Check No. _____



Veteran's Corner

Where Do I Go To Find Missing Military Records?

Military retirees and Veterans, spouses and surviving spouses of retirees and Veterans, regardless of when the Soldier retired or separated from military service, have one source for replacing missing records and awards – the National Personnel Records Center (NPRC) in St. Louis, MO. Do not send requests to the Army's Human Resources Command; NPRC will forward any requests requiring their attention. Since this information applies to Army Veterans as well as retirees, we ask that Retired Soldiers share this information.

Retirees and Veterans who need to replace missing records or awards can go online to www.vetrecs.archives.gov. Family members who need to replace missing records or awards for their Veteran family member can also use this service. If you do not have access to a computer, you can write to the National Personnel Records Center, (Military Personnel Records), 9700 Page Ave., St. Louis, MO 63132-5200.

When you request records, you need to give NPRC all the information they need to find the records you seek among the 70 million records they have on file. You can do this by completing a Standard Form 180, available online. This includes: the Veteran's complete name used while in the service, service number (depending on when the Veteran or retired member served, this may be the Social Security number), Social Security number, branch of service, dates of service and date and place of birth (especially if the service number is not known).

Echoes – The bulletin for retired soldiers and their families

Note: The DD214 is probably the most important document a Veteran is ever issued and it may be difficult to obtain it in a timely manner once the veteran has passed away. The Veteran's discharge paper, DD214, can be requested by filling out the standard form 180 which is available at the RELAC office.

Annual Event to Honor Veterans and Their Families

Please join me at my 14th Annual "Remembering Our Veterans and Their Families: Past, Present and Future" event on Saturday, May 28, 2011 at Arcadia County Park, 405 So. Santa Anita Ave., Arcadia 91006, from 10:00 a.m. to 3:00 p.m. A special tribute to our armed forces will be held at 11:30 a.m., co-hosted by Channel 4 Weatherman, Fritz Coleman. Our family event will include skydivers, flyovers, a "Wall of Remembrance" of veterans (bring copies of photos of your loved ones to place on the wall), displays of military vehicles and equipment, a children's area (face painting, arts and crafts, games, entertainment, free popcorn), free vaccinations, free haircuts and manicures, live entertainment, food booths and much, much more. Our County departments, governmental, independent and private agencies will provide an abundance of information and resources such as health, employment, child support, legal services, etc.

I hope to see you on this special day as we honor our service men and women!

MAYOR MICHAEL D. ANTONOVICH



Welcome New Members

December 2010
& January 2011

Beaches & Harbors

Minor, Toni

Children/Family Services

Pearson, Michael J.

Penland, Joan

Fire

Kiger, John

Health Services

Ferguson, Joann

Camanzo, Macmele

Ramirez, Rosa Maria

Internal Services

Escarcega, David J.

LACERA

Brown, Rita Kay

Shuler, Margaret

LAC+USC Med. Ctr.

Moore, Donald A.

Mental Health

Johnson, Barbara

Thompson, Bettye A.

Probation

Williams, Jean D.

Public Defender

Ellison, Linda

Public Health

Alvarado, Tillie

Dick, Gloria

Dishman, Gail

Morehead, Iva Joann

Public Library

Reyes, Josefina B.

Public Safety

Figueroa, Daniel R.

Public Social Services

Adevale, Sunday E.

Delgado, Joe Jr.

Taylor, Barbara

Public Works

Allen, Robert

Sheriff

Hudson, John W.

Juarez, Vern

Vasquez, Angel

Superior Court Reporter

Tam, Jean L.

Dept. Not Designated

Alva, Enrique

Gonzalez, Miguel A.

Morrison, Sarah L.

Tolliver, Bonita J.

New Affiliate Member

Public Library

Gade, Annette

New Associate Members

Adevale, Linda J.

Alva, Lois L.

Escarcega, Christine

Ferguson, Bruce

Figueroa, Helen D.

Galindo, Arthur

Gonzalez, Mabel

Hudson, Janis

Juarez, Agatha

Kiger, Robin

Moore, Shirley A.

Pearson, Nancy

Thompson, Arthur V.

Tolliver, Henry D.

Vasquez, Martha

Save the Date

June 16, 2011

General Membership Meeting

Glendale Elks Lodge

120 East Colorado Street

Glendale, CA

More to follow in your next Newsletter!

Touring With Great Western
626-578-1161 • 800-344-7090
Don't forget to ask for your RELAC discount!



Black Hills of South Dakota

Departs: May 21, 2011 & Oct 1, 2011

9-Day Land Tour - Double Per Person: \$999.00

**Mt. Rushmore • Deadwood • Crazy Horse Memorial
High Plains Western Heritage Center
Custer State Park • Tate & Journey Museums**

- Tour Price Includes -

Deluxe Motor Coach Transportation

14 Meals: 8 Breakfasts, 6 Dinners

8 Nights Hotel Accommodations

Admissions and Sightseeing per Itinerary

Professional Tour Manager Throughout

Taxes and Baggage Handling

GREAT FALL PACIFIC COAST GETAWAYS

WEST COAST CRUISE HOLIDAY

8 Day Air-Motor Coach-Cruise Tour

Departs September 17, 2011

- Tour Price Includes -

Local LAX transfers - Jet to Vancouver - Lunch Break at the Historic Fishing Village of Steveston - Two Nights Hotel Accommodations - Rocky Mountaineer Rail Excursion Day Trip to Whistler - Tour Britannia Mine Museum Queen Elizabeth Park - Gastown & Chinatown - 5 Night Cruise aboard Sapphire Princess to L.A. Two Port Stops: Victoria, B.C. & San Francisco Meals: 2 Breakfasts - 1 Lunch - 1 Dinner + Cruise Meals Return Transfers - Taxes & Baggage Handling - Call for Descriptive Brochure!



CALIFORNIA & OREGON COAST RAIL & SAIL

10 Day Rail - Motor Coach - Cruise Tour

Departs September 19, 2011

- Tour Price Includes -

Amtrak Coast Starlight Overnight to Klamath Falls
Motorcoach to Crater Lake - Gold Beach-Rogue River
Jet Boat Cruise-Oregon Coast Sand Dunes Buggy Ride
Visit Heceta & Yaquina Lighthouses & Oregon Gardens
Seattle's Pike's Market - Coach to Vancouver & Sail
12 Rail & Land Meals + All Cruise Meals
3 Night Cruise to Los Angeles aboard Golden Princess
- No Air Required! -

Call for Descriptive Brochure



**RELAC
NEWSLETTER**

Vol 46 - Mar/Apr 2011

Number 2

Retired Employees of
Los Angeles County
1000 S. Fremont Ave.
Unit 15, Alhambra, CA
91803-8802

(626) 308-0532

(800) 537-3522 Fax (626)
308-2901

E-mail: admin@relac.org

Board of Directors

President

Bill de la Garza

Vice President

Diane Sandoval

Secretary

Mary Lou Bangar

Treasurer

Edward C. Morris

Past President

Greg Walia

Members

Donald Fandry

Martin Golds

Raymond R.

Guyovich

George Hernandez

David L. Muir

Alice Prouty

Ida Leon Ramos

Marianne Reich

Mary K. Rodriguez

Raul Solis

Emeritus

Dave E. Kalinge

Editor: Martin Golds

Copyright © 2010 by

RELAC This information
presented in your RELAC

Newsletter is believed

to be from reliable

sources. However, no

responsibility is assumed

by RELAC or the writers

for inaccuracies in the

articles as published.

Office Hours

9:00am - Noon &

1:00pm - 4:00pm

Monday - Thursday

Closed Friday,

Saturday, Sunday &

Public Holidays

website:

www.relac.org

**Golf
News**



By Gil Sandoval
RELAC Golf Director

**Links at Victoria Golf
Tournament**
Jan. 31, 2011



The players were greeted by Mother Nature with open arms. The breeze was light and the day was beautiful. The "A" players and the Ladies did very well, as Kay Barrents edged out Charlene DeBie and Sue Danbara for the win. While in the "A" flight Mike Hernandez with a net 66 was only one ahead of Bob Bogawa and Jim Noyes. Bob Cornelius was an easy winner in the "B" flight with a net 66. The "C" flight was close as Jim Olds was also one ahead of John Wehrly with a net of 66.

I want to extend my thanks to Jim Noyes, Richard Duran, Roger Dehaan, Randy Evans and Terry Black who have offered to serve on the RELAC Golf Committee.

Links at Victoria Results:

"A" Flight Winner (19 and under)

1st Mike Hernandez (66)
2nd Bob Bogawa (67)*
3rd Jim Noyes (67)

"B" Flight (20-27 Handicaps)

1st Bob Cornelius (66)
2nd Jim Guild (70)
3rd Del Gamble (74)

"C" Flight (28 up Handicap)

1st Jim Olds (66)
2nd John Wehrly (67)
3rd Bob Kroll (70)

Ladies

1st Kay Barrents (64)
2nd Charlene DeBie (65)
3rd Sue Danbara (66)

*Winner in a card off.

Closest to the Pin on Par 3's

Men # 5 Hideo Anzai
8 Lavell Brumfield
#14 Don DeBok
#16 Randy Evans
Women # 5 Sue Danbara
8 No Winner
#14 Sue Danbara
#16 No Winner

NEXT TOURNAMENT

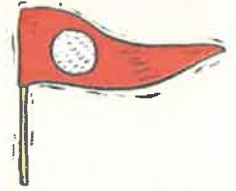
Monday, Mar. 21, 2011

La Mirada Golf Course 8:00 a.m. start

Entry Deadline: Mar. 4, 2011

**RELAC
Golf Entry Form**

La Mirada Golf Course
15501 Alicante Road
La Mirada, CA 90638



Monday, March 21, 2011

Please Print

1. Name _____

Address _____

City _____ Zip _____

Phone _____

Fees: \$32.00 PER GOLFER - CART EXTRA

If possible, place me in a foursome with below listed golfers. Addresses of all golfers MUST be included.

If possible, we would prefer an
Early _____ Late _____ starting time.

2. Name _____

Address _____

City _____ Zip _____

Phone _____

3. Name _____

Address _____

City _____ Zip _____

Phone _____

4. Name _____

Address _____

City _____ Zip _____

Phone _____

NOTE: Only ONE GUEST per member.
Enclose check for ___ golfers @ \$32 per
Golfer. Make checks payable to RELAC
Golf. Mail entry to RELAC GOLF, 1000
So. Fremont Ave., #15, Alhambra, CA
91803-8802

Entry Deadline
March 4, 2011
ALL CHECKS MUST BE
IN THE MAIL

For Office Use:

Date Rec. _____ Amt.\$ _____ Ck# _____

News From LACERA

by Janice Golden
Assistant Executive Officer



Working after Retirement

We often get inquiries from retirees asking if their LACERA retirement allowances would be impacted if they go back to work. The answer is "no," with one exception; retirees may not be reemployed in a permanent position with Los Angeles County. Other than that, they are free to go back to work part-time or even full-time after retirement with any company they choose, without losing their LACERA retirement benefits.*

LACERA must comply with Internal Revenue Code requirements. As such, there are specific procedures that must be followed in order for a retired L.A. County employee to return to work for Los Angeles County.

Full-Time L.A. County Service after Retirement:

If a County department would like to reemploy a LACERA retiree on a full-time, permanent basis, several requirements must be met. It is critical that the hiring department and the retiree contact LACERA prior to reemployment, so we can communicate the steps that must be followed. Once all requirements have been satisfied, the retiree can be reemployed. Upon reemployment, the individual's LACERA allowance is put on hold for the duration of the second employment period until such time as the employee retires again.

Temporary (120 days) L.A. County Service after Retirement:

If a LACERA retiree would like to return to Los Angeles County on a temporary basis (maximum of 120 working days in a fiscal year), the following rules apply:

1) If a member retired prior to normal retirement age, there must be at least a 90-day continuous break in service before returning to County employment. Therefore, a member must have terminated/retired at least 90 days prior to being reemployed as a temporary County employee.

Normal retirement age varies according to retirement plan:

- Age 57 for general contributory members
- Age 65 for general non-contributory members (Plan E)
- Age 55 for safety members

2) If a member retired after normal retirement age, no waiting period prior to reemployment is required.

Once the retiree and the Department have complied with the above rules, the retiree can return to County employment for up to 120 working days in a fiscal year and continue to receive his or her monthly retirement allowance.

If you have any questions regarding post-retirement reemployment with the County, you may contact LACERA at 1-800-786-6464 or visit the Benefits, Retired Member section of lacera.com.

**Applies to service retirements only; certain restrictions apply to members who were granted disability retirements.*

RELAC Board of Directors Election for 2011

by Ed Morris
Chair, Bylaws/Nominations/Elections Committee

At the May 26th business meeting of the Board of Directors, the Bylaws/Nominations/Elections Committee will present a list of all interested candidates. The Board will select a slate of five (5) nominees for the five open Director positions. If elected they will serve three (3) year terms beginning January 2012.

If you are interested in serving on the Board of Directors, you may apply in writing at any time by sending a letter to the RELAC office by May 9, 2011. Your letter should briefly explain your interest and describe the experience and education that enhance your qualifications. The committee will interview you and then add your name on the list of all other interested candidates.

Considerations to which candidates are subject include, but are not limited to, the following:

1. Have time and be committed each month to attend the business meeting and or committee meetings
2. Have time to serve the members of RELAC by actively participating on committees
3. Participate in RELAC activities and events
4. Have a fax or computer available to receive important messages and reports
5. Enjoy interaction with people

Any candidate who is not one of the five selected by the Board, or who missed the deadline of May 9th, 2011, will have to file a petition signed by not less than twenty-five (25) RELAC members. If there are at least six (6) interested candidates for the five positions, an election will be held in the month of September. A signed petition with a letter of acceptance must be received in the RELAC office by no later than July 31, 2011. Petition forms are available at the RELAC office. THERE SHALL BE NO OTHER METHOD OF NOMINATION. (Article VI, RELAC Bylaws)

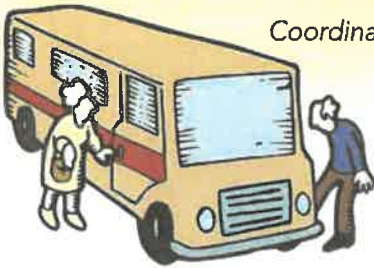
Ballots must be returned to a designated CPA Firm by September 30, 2011. The firm will conduct the count and report the results to RELAC and directly to each candidate. Results will be announced at the next regular General Membership meeting and published in the November/December Newsletter.

Please write to:

RELAC
Bylaws/Nominations/Elections Committee
1000 So. Fremont Avenue, Unit 15
Alhambra, CA 91803-8802

RV Outing Notes

Ed Clifton
Coordinator of RV Club



Eighteen rigs enjoyed our outing to Pechanga RV Resort in Temecula. Although the cool nighttime temperature provided a little extra struggle time, the days were bright and sunny.

As usual, our Wagon Masters did an outstanding job. Mike and Bob Reyes and spouses Veronica and Linda kept everything organized and, with the usual extra volunteers, everything went smoothly. Lots of good food was enjoyed by all -- at breakfast and also at our potluck. The ladies night out was at the Buffet in the Casino which proved to be a two-edged sword. If you didn't overeat, the slot machines provided too much of a temptation for some (although I did hear there were a few coins won). Many thanks to RELAC for the gas cards. They were won by Len Blake and Mike Reyes.

Our next outing will be in March at the Casa Del Sol RV Resort in Hemet. The coupon was in the last newsletter although the dates should be March 14-15-16, 2011. The early day then becomes March 13, 2011.

Our outing in May will be at Mountain Lakes Resort in Lytle Creek. The Wagon Masters will be Norman and Chickee Nelson. The coupon follows. If you are a member of Mountain Lakes or ROD, you need to make your own reservations with the resort or through ROD.

Until next time, keep the rubber side down!



BATTER UP! RELAC NIGHT at Dodger Stadium

by Mary K. Rodriguez
Chair, Recreation Committee

Game Starts at 6:10 p.m.
Monday, July 4, 2011

This year the game should be exciting! The Los Angeles Dodgers will be playing the New York Mets. Following the game there will be a Spectacular Fireworks Show.

The Stadium ticket price for this premium game is \$30.00. HOWEVER, the price for RELAC members and their guests is only \$25.00 per ticket. The seats are located in the lower reserved section behind home plate. A great location!

Historically, this event has always been very popular and a limited number of seats are available and they will go quickly. So, please fill out the coupon below and send it along with your check as soon as possible. **The deadline is June 20, 2011.** Your tickets will be mailed to you on June 23, 2011.



R.V. CAMPOUT RESERVATION

CAMPGROUND: MOUNTAIN LAKES RV RESORT
LYTLE CREEK, CA 92543

DATES: MAY 9,10,11, 2011, EARLY DAY, MAY 8, 2011

Names: _____
(Last) (Retiree) (Spouse)

Address: _____
(No.) (Street)

City: _____
(State) (Zip)

Telephone:() _____

DEADLINE: April 8, 2011

COST: \$123.00 for three days; \$40.00 extra for early day.
Please pay for early day through Wagon Master.
Make checks payable to Norman Nelson, the Wagon Master, and mail to:
Norman and Chickee Nelson
15057 Sage Street
Hesperia, CA 92345
Phone: (760) 244-0875

Motor Home _____ Trailer _____ Length _____

DODGERS vs. THE NEW YORK METS

Game Starts at 6:10 p.m.
Monday, July 4, 2011

Name: _____

Address: _____

City/State/Zip: _____

Phone: (____) _____

No. of tickets _____ @ \$25.00 each

Total Amount Enclosed: \$ _____

Make checks payable to RELAC and mail to:
RELAC Baseball
1000 So. Fremont Ave., #15
Alhambra, CA 91803-8802

DEADLINE - JUNE 20, 2011

For office use:
Rec'd _____ Amount \$ _____ Check No. _____

Scenes from RELAC's Annual Installation Luncheon

Held January 20 at Almansor Court in Alhambra - Photos by Ida Leon Ramos

L.A. County Sheriff Lee Baca, the keynote speaker, extolled the values and satisfactions of a career in public service.

The TSA Chorus, conducted by Raul Matute, performed beautiful renditions of patriotic songs.



RELAC members Eddie and Rose Concepcion, were among the more than 300 members and guests who enjoyed the food and festivities.



Sheriff Baca along with the RELAC officers and Board members whom the Sheriff installed for their new terms.

Irene and Thomas Williams are RELAC members who clearly were pleased to have attended.



VEHICLE LOANS



Southland's terrific rates and terms on new and used vehicles put you in the driver's seat! Speak with a Service Representative or apply online to get pre-approved today!

Southland
CREDIT UNION



- Loan approval within minutes
- New Vehicle Loan Rates as low as 2.99% APR*
- Rate includes a discount of .25% for automatic payments from your Southland Checking
- Repayment terms up to 7 years
- Finance up to 120% of the purchase price with tax, license, and insurance

RELAC Members
Join and receive a free gift!*

Membership is subject to eligibility. All new accounts will be verified through ChexSystems and are subject to credit approval. *APR=Annual Percentage Rate. Rate quoted as of 2-15-11 for a 36-month term. Rate includes a .25% discount for autopay from a Southland Checking or Money Market Account. The monthly payment is \$29.08 per \$1,000 at 2.99% for 36 months on new vehicles. Other rates may apply based on your individual credit profile. Loans made subject to credit and vehicle qualification, other fees and conditions may apply. Rates are subject to change without notice.

www.SouthlandCU.org • 800.426.1917



Letters To The Editor

Here's to the RELAC Board and to great memories! I have been retired since 1984 and this note is long overdue. Through the years I have owed you dozens of thank you notes but I have had a totally disabled husband for 40 years. My retirement, medical insurance, my appointment calendars and my telephone contacts with RELAC are all reasons for me to be so grateful. I really look forward to the Newsletter, but not necessarily the "In Memoriam" column. It is difficult to lose friends and former co-workers - but that's life. For the first time I am sending in the slip for the Valentine's Day Drawing. There are still things to enjoy. Many thanks from a former Public Library employee.

Florence Bouchard
Huntington Beach, CA

Thank you first for my lovely birthday card and good wishes and now again for the beautiful Christmas Greeting. It is very kind of you to send individual greetings like this and I appreciate all you do for us. Merry Christmas and Happy New Year!

Rachel Hays
Azusa, CA

You are an incredible organization and I am in awe at all the attention you devote to us, the members. So please accept HEARTY Thanks from me, which seems inadequate for your constant concern for all of your members. I appreciate the Pocket Secretary, the meetings we attend, the information from the speakers, the Picnic and the yearly Valentine Drawing. In a nut shell, I appreciate all that you do!

Ida Magitt
Simi Valley, CA

My deep appreciation to RELAC for being remembered after all these years. I received your Birthday Card and the beautiful Christmas Card and content -- which will help me see more clearly. What a nice gift. You have a huge job keeping in touch with all of the retirees. To all, best wishes for a very happy holiday season.

Mabel Markham
Los Angeles, CA

Thank you for your hard work! It is a difficult period, but you keep us up on all the relevant events.

Hikaru Okubo
Montebello, CA

Lost member Elbert "Pete" Pederson is well and alive in Denmark.
Pete Pederson
DK-5683 Haarby, Denmark

Thank you so much for the RELAC Newsletters and for the 2011 Pocket Secretary (just love it)! It is perfect because of the size of the squares - they are big enough to put several things in each one - doctor appointments, etc. It was invaluable to me when my husband was ill and we had so many appointments to keep track of. Hallmark and the other calendars like this are just too small!

Muriel Plummer
Manhattan Beach, CA

Many thanks to RELAC for the Newsletter which keeps us informed about retirement issues, health care, etc. and how to obtain See's Candy for less at Christmas. It keeps me in touch since my husband passed away twenty-two years ago and I moved to Kansas City to be near family. I will be 92 in August, God willing. I always enter the Valentine drawing, but I have not been one of the lucky ones (smile).

Mae Dee Reed
Kansas City, MO

Thank you for being a watch dog for retirees. We really rely on you. And, thanks for the yearly pocket calendar. I have all of mine from 1989 to date - my own record of the past.

Mary Semon
Atascadero, CA

I wanted to respond to Mr. Hubert's provocative letter in the last newsletter. First of all, the newsletter is always very helpful and enlightening, pointing out the threats to our pensions, health care benefits, and privacy.

In regard to retirees being "bored silly" may I mention how many of us find volunteer work goes a long way towards helping us keep our skills current and make productive use of our time. I have also enjoyed many lifelong learning classes at the local university. And, certainly everyone has some degree of family activity - I am the proud mother of a female Marine and do whatever I can to support her service.

Teresa Sheehy
Vista, CA

We would also like to acknowledge the following members who were kind enough to take the time to send notes thanking RELAC for the Newsletter, Pocket Calendar, Holiday and Birthday Cards, the Valentine Drawing watching out for retiree benefits and various other services. We appreciate hearing from you.

Willie Mae Bailey, Inglewood, CA
Mary Ann Barry, San Clemente, CA
Maurine Blakely, Glendale, CA
Jean Buckley, Whittier, CA
Berty Callahan, Morris, MN
Pat Chur, Long Beach, CA
Audrey Drumm, Carlsbad, CA
Evelyn Galli, Midvale UT
Henry Goldfield, Reseda, CA
Harold Hackett, Victorville, CA
Albertha Handy, Compton, CA
Lorraine Harris, Cudahy, CA
Ann Marie Hengler, Las Vegas, VN
Marilyn Kern, Arcadia, CA

Ethel Mae Lambrinck, Issaquah, WA
Evelyn Lee, Ventura, CA
Jean Liebert, Corvallis, OR
Lorraine Lipman, Los Angeles, CA
Mabel Lee Markham, Los Angeles, CA
June Millar, Glendale, CA
Mildred Norton, Lodi, CA
Marie Palagyi, Arcadia, CA
Muriel Plummer, Manhattan Beach, CA
Annamae Slavin, Murrieta, CA
George Tung Wei Liu, Monterey Park, CA
Anne Urfrig, Los Angeles, CA
Martha Watson, Harbor City, CA
Fern Wilson, Irvine, CA

For Sale

CEMETARY LOTS - Offering four burial plots, Rose Hills Memorial Park, Whittier, CA, Garden of Affection. Sell all four for \$20,000. Call (760) 251-2161.

CEMETARY LOT - Offering one plot, Park Lawn Cemetary, City of Commerce, CA. \$5,525 or best offer. Call Ruth at (310) 938-4425 or (310) 938-4425.

CEMETARY LOT - Double lot, Rose Hills Memorial Park, Whittier, CA, Garden of Affection. Sell for \$3,000 or make offer. Call Beth at (949) 369-5635.

WANTED - Pre-1970 motorcycle and motorcycle parts. Call Gary at (909) 319-3358.

PREFAB HOME - Sun Meadows Estates, Murrieta, 2 bdr., 2 bth., w/attached 2-car garage; includes stove, refrigerator, microwave, washer & dryer; new paint, carpet and tile floor, open living room & dining area. Well maintained park w/many activities, easy access to freeways, shopping, medical, restaurants & bus service. \$30,000 cash or best offer. Call (951) 679-9611 or (909) 239-4227.



STILL LOOKING!

We have made a lot of progress and thank you for your assistance; but we still need help locating some of our lost RELAC members. In most cases, we believe they have moved and not given us their forwarding address. If you are in contact with any of the following "lost" RELAC members, please ask them to call us at (800) 537-3522 or email us at admin@relac.org.

Margueritte Anderson	Edward Harter
Edward Anthony	Clifton Hartfield
John Benfield	Charles Perez
Maria Bennett	Beverly Perito
Pete Campa	Mattie Wachsmuth
Charles Campbell	Shirley Wade
Matthew Cohn	Joan Wagner
Carolyn Coleman	Fred Waldron
Ruth East	Charles Walker
Amos Easter	James Walton

RELAC DOES NOT RECEIVE REPORTS OF ADDRESS CHANGES MADE TO LACERA SO BE SURE TO LET US KNOW IF YOU MOVE!

COURT OF APPEAL REJECTS ORANGE COUNTY'S ATTEMPT TO REDUCE PENSIONS

by David L. Muir
RELAC Board Member



Prior to 2001, retirement benefits for safety members in Orange County (deputies and sergeants in the sheriff's department and investigators in the district attorney's office) were calculated under a 2% at age 50 formula. If a safety member making \$75,000 a year retired at age 50 after working for 30 years, his annual retirement benefit would be 60% (2% x 30 years) of \$75,000, which equals \$45,000.

In 2001, the Orange County Board of Supervisors negotiated a labor contract to increase the safety member retirement formula to 3% at age 50. Using the above example, the safety member's annual benefit would be 90% (3% x 30 years) of \$75,000, which equals \$67,500. The Board of Supervisors' contract provided that the enhanced formula would be applied to all years of service, not just those years of service after 2001 when the formula first came into effect. If the new formula had been in effect from the beginning of employment, both the employees and the county would have paid higher contributions required to finance the enhanced benefit. The result of all this was the retirement fund was short by about \$100 million and the County would be required to make that up.

In 2008, seven (7) years after the labor contract was negotiated, the County sued the retirement system, claiming its own contract was illegal and asking the Court to order the retirement system not to calculate retirement benefits based on applying the enhanced benefit formula to service performed prior to 2001. The County said the contract violated three (3) provisions of the California Constitution:

1. The Constitution prohibits paying a public employee extra compensation after the work has been done.
2. The Constitution prohibits a gift of public funds.
3. The Constitution prohibits the County from entering into a debt if it would require the County to spend more in a fiscal year than the revenues received in the same fiscal year. The County claimed that the \$100 million shortfall was a debt that would violate the Constitution.

The County lost in the trial court, and on January 26th the Court of Appeal agreed. It remains to be seen whether the Orange County Board of Supervisors will appeal the case to the California Supreme Court.

RELAC members Roy and Maria Hansen seen enjoying the Annual Installation Luncheon.



Members Spotl

Los Angeles County Sheriff's Department 30TH ANNUAL RETIREES' REUNION

June 19, 2011 – June 25, 2011
Inter-Mountain Fairgrounds
McArthur, California

Located on Highway 299, approximately 70 miles east of Redding this beautiful valley between the peaks of Mt. Lassen and Mt. Shasta is a great location to gather together with other Los Angeles County Sheriff's Department Retirees from all over the United States.

Bring your RV, tent or stay in one of the local motels in Fall River Mills. Features full hook-up camping, showers, laundry and 30/50 amp service at \$15.00. Activities include golf at a championship 18-hole golf course, horseshoes, lawn darts, Bocci ball, card tournaments, potluck dinners, fishing, and sightseeing - or just kick back and relax. Plenty of war stories, tales of then and now, and lie swapping! Newly retired and surviving spouses are especially welcome! Adult participation.

The Reunion Registration Fee of \$10.00 per person includes one catered dinner, one pancake breakfast and liquid refreshments for five days.

To RSVP and for additional information please contact:

Walter & Betty McClure (541) 245-1509,
(541) 646-2301, wjmcclureentinc@yahoo.com

Tom Sargent (530) 243-8982,
tsgt907@charter.net

Richard or Judy Smith
(626) 444-0686, retiredstars@earthlink.net

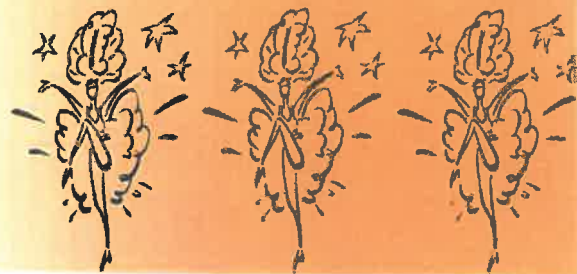


What is Your Volunteer Experience?

We know that many RELAC members volunteer to serve worthy causes. And we believe that volunteering is beneficial to the health and well being of retirees, as well as providing essential services to clients. We would like to hear from you and publish your experience as a volunteer. What services have you performed? For what organization(s)? How do you value your service? Of course you deserve the recognition.

Also let us know if the organization for which you volunteer would like to recruit more RELAC members. If so, we will be happy to pass the word to the readers of the Newsletter.

The deadline for the May/June issue is April 1.



Winners of 2011 Valentine Drawing Each Gets \$25!!!

- Gwen Alcayaga - Santa Clara, UT
- Janis Atkins - Los Angeles, CA
- Bette Cohen - Sherman Oaks, CA
- Catherine Cousin - Cary, NC
- Toni Coleman - Inglewood, CA
- Norma Ekstrom - Hayden, ID
- Carmen Espinosa - North Hills, CA
- John Gee - Monterey Park, CA
- Bethine Greene - Henderson, NV
- Lynette Grismore - Valencia, CA
- Marjorie Hanes - Reno, NV
- Ralph Harders - La Puente, CA
- Carolyn Johnson - Fort Smith, AR
- Sylvia Khan - Port Jefferson, NY
- Ronnie Lockwood - Summerfield, FL
- Deanna Luttio - Cedar City, UT
- Crystal Lynch - Lakewood, CA
- Nøel Manis - Bend, OR
- Mary Ann McRoberts - Fruit Heights, UT
- Jack Munger - Ukiah, CA
- Jerrilyn Nicodemus - Simi Valley, CA
- Lucy Pafermino - Los Angeles, CA
- Peggy Peck - Manhattan Beach, CA
- Rita Pisarek - El Monte, CA
- Evelyn Porter - Palmdale, CA
- Margaret Rashoff - San Juan Capistrano, CA
- Ana Sanchez - Menomonie Falls, WI
- Melvin Sheftel - North Hollywood, CA
- Shirley Shimizu - Bellflower, CA
- Betty Sims - Palmdale, CA
- Geraldine Singletary - Los Angeles, CA
- Irma Smith - Granada Hills, CA
- Mamie Stephens - Shreveport, LA
- Cecilia Tapscott - Los Angeles, CA
- Norma Tucker - Ramona, CA
- Dorothy Walkosz - Surprise, AZ
- Lois Wallace - Los Angeles, CA
- Martha Watson - Harbor City, CA
- Eugene West - Provo, UT
- Edith Wyatt - Sylmar, CA

IN MEMORIAM

*This list includes retired employees, both RELAC members and non-members.
* denotes RELAC members*

Agricultural Comm./Wts. & Meas.

Kurumada, Joe*

Alcohol/Drug Pgms. Admin.

Wood, Harold L.

Assessor

Avila, Lydia
Bullock, Lillian E.
Chan, Steven
Helm, Eleanor J.*
Hill, Willie Theresa
Jones, Macey*
McCoy, Roscoe H.
Villanueva, Rodolfo M.*
Walker, Valeria*

Auditor – Controllor

Hartshorne, Audrey*
Saul, Sherry T.*

Beaches & Harbors

Johnson, Kenneth R.*
Whitehead, George

Board of Supervisors

Lear, Davis H.*

Chief Admin. Office

Humphries, Vernon J.*

Chief Exec. Office

Steenbock, Stanley R.*

Chief Info. Office

Evans, Edmonia M.*
Jenkins, Johnny
Smith, Clarence D.

Child Support Services

Caulton, Elois*
Jacobson, Gordon*

Children & Family Services

Alarid, Drol G.
Evans, Delois
Huhta, Dorothy R.
Medel, Nellie R.
Mogollon, Ana F.
Reed, Willietta W.
Rodriguez, Aquilino A.
Spitz, John A.

Communications

Robertson, Arleine*

Community Health

Bethune, James N.*
Dyson, Wille A.*
Revis, Ruth E.

Community & Sr. Citizens Svcs.

Grant, Donald M.
Webster, Callie R.

Data Processing

Vogelsang, Louise A.

District Attorney

Aydt, Irene
Johnson, Arthur W.
Ramsden, David T.

Engineer

Anderson, Helen G.*
Ito, Yoshimi*
Lynch, Robert G.*
Michels, Bruce*
Moss, Lionel L.

Facilities Management

Sedita, Joseph*

Fire

Bright, Donald W.
Duran, Rudolph C.
Glidden, Donald L.*
Ortiz, Felix J.
Phillips, Robert H.*
Shook, Michael E.
Simpson, Theodore A.
Snow, Robert E.kk
Street, Harold L.
Weaver, Lee*

Flood Control

Barr, William R.*
Bauman, Warren H.*
Cornell, Elwood C.*
Smith, Charles C.

Harbor/UCLA Medical Center

Dorsey, Ethel L.
Inouye, Veda
Rosenthal, Samuel*
Secakuku, Josephine*
Watkins, Betty L.
Yang, David D.*

Health Services

De Fosse, Rayford R.
Tartan, James
Williams, Yoshi Y.*

Health Services Admin.

Bledsoe, Elia J.
Davis, Betty D.
Feiga, Mattie
Hernandez, Lynne
Hester, Delva*
Hutchinson, Eva
Pratt, Ruby M.*
Weinberg, Ruth*
Williams, Verdie M.
Yabut, Emmanuel M.
Zelickman, Celia*

Internal Services

Cervantes, Arturo
Dukes, Willie E.
Ezell, Charles A.
Harper Jr., James H.*
Hegler, Jesse
Palmersheim, James J.
Poe, Helen L.
Smith, Talmadge R.
Valino, Armando C.

King/Drew Medical Center

Alvarado, Georgina
Boyd, Leslie L.
Griffin, Harriet
Hodges Jr., Al R.
Phillips, Evelyn*
Pope, Mildred E.
Samuel, Gladys
Waller, Wendell E.

LAC+USC Medical Center

Breakfield, Dorothy
Daniels, Julia M.*
Dianda, Alberta A.
Fox, Frances L.
Gonzalez, Luis
Goodman, Thomas J.
Huerta, Lucinda
Lappat, Emma J.
Lozano, Mary R.
McClaskey, Harold I.
Mendoza, Dora
Pashky, Osse*
Sapp, Florence R.
Smith, Drucella*
Tillett, Glenda R.
Villagrancia, Rebecca R.*
Whitehead II, Decosta

Mechanical

Blanco, Manuel O.*
Brook, Leonard*
Gervais, James B.*
Jenkins, Herbert C.
Snyder, Gene K.
Taylor Jr., Henry
Warden, Roy F.*

Medical Examiner-Coroner

Rainey, Walter R.*

Mental Health

Allums, Emmer*
Avila, Anthony
Dorenfeld, Belle*
Kovan, Robert A.
Sutherland, Sheryl A.
Wicker, Lawrence A*

IN MEMORIAM

This list includes retired employees, both RELAC members and non-members.

** denotes RELAC members*

Municipal Court

Marks, Mary M.* (Beverly Hills)
Viola, Rose* (Los Angeles)

Museum of Art

Allison, Roma A.

Olive View Hospital

Cevallos, Ernestine A.
Jordan, Royden G.
Lieb, Miriam
Stoller, Elaine
Thiemke, Helen I.
Walker, Dale

Parks & Recreation

Anderson, Ruth E.
Bell, Floyd*
Coash, Michael R.
Rivas, Alejandro C.*
Smith, Earl M.

Probation

Bass, Lawrence A*
Davila, Caroline C.*
Dederick, Ronald C.*
Espinosa, Gaudencio R.
Gardner, Louise B.
Hagan, Rose
Jiminez, Ruben*
Kelly, James L.*
Kuk, Christophe K.
Lippman, Gary A.
Mack, Dennis*
Roberson, Johnny L.
Stone, Herman
Tacke, Paul L.
Williams Jr., Mentle

Public Defender

Allensworth, Michael

Public Health Program

Mervis, Jacob*
Perkins, Idalah G.
Williams, Ammini B.

Public Library

Disterdick, Robert H.*
Reed, Lisbeth C.

Public Safety

Aburto, Albert A.

Public Social Services

Amescua, Richard A.
Arenas, Mary E.
Chernock, Dora
Compton, Gloria Y.
Edwards, George C.*
Evans, Dorothy M.
Fawcett, Devonne
Gibrick, Seymour
Gliner, Sylvia*
Gonzales, Cecilia T.
Griego, Phillip D.
Guzman, Francisco
Hart, Jean M.*
Hopson, Lucille
Janofsky, Didney
Martinez, Georgina*
Morales, Minnie R.*
Moyer, Gerald F.
Ross, Rosalind A*
Russo, Iolanda
Sargious, Touta*
Scott, Lavonia H.*
Singley, Thelma
Stone, Ronald N.
Watts, Joyce S.*
Winkler, Ruth J.*
Wooley, Gloria L.

Public Works

Chebul, William J.
Fabbro, Robert F.*
Mac Naught, Robert D.
Perales, Anselmo I.
Rose, Garrett J.
Shrum, Oris L.

Rancho Los Amigos Hospital

Aguayo, David
Clegg, James H.*
Fong, Ellen C.
Jones, Johnnie B.
Jones, Lillie B.*
Mayhew, Helen D.*
Riley, Willine
Sargent, Carrie D.

Reg.-Recorder/County Clerk

Jackson, John G.*
Pobre, Sisenando A.

Sheriff

Anderson, Ione
Austin, Allen E.
Beatty, Donald F.*
Castro, Frank G.
Costello, John*
Dickey, Robert P.
Dillon, Annipearl
Duarte, Gilert J.*
Gutierrez, Frank
Henderson, Joyce I.
Kellogg, Thomas E.
Kelly, Richard W.
Lebas, Albert E.
Leggett, James O.*
Matzen, Jack L.*
Miller, Gary M.
Nikolenko, Nicholas P.
O'Neil, Patrick W.
Pope, Lyle S.
Ramirez, Arlene M
Rodriguez, William H.*
Rupert, William H.*
Salchunas, Richard A*
Salvador, Dulce M.*
Sanders, Willie
Schmidt, Wesley W.*
Schwager, Jerome M.
Smith, Donald R.*
Sully, Anthony J.*
Tipton, James W.*
Vestey, Edgar G.*
Whitley, Judy K.*
Wright, James L.

So. Coast Air Quality Mgmt.

Bryan, Robert J.*

Superior Court/County Clerk

Burman, Ilene A.
Cummings, Celina
Flowers, Norma Jeanne
Mc Cammon, Emma L.*
Ramos, Josefina B.
Trani, Louise A.*

Women's Hospital

Olguin, Rose A.
Sears, Leila A.

Department Not Designated

Alford, Albert W.*
Johnson, Howard E.
Madison, Maggie M.
Winder, Heber F.



RETIRED EMPLOYEES
of LOS ANGELES COUNTY
1000 South Fremont Ave. Unit 15
Alhambra, CA 91803-8802

Return Service Requested

NON-PROFIT
U.S. POSTAGE
PAID
PERMIT #66
PASADENA, CA

General Membership Meeting

George Hernandez, Chair, Program Committee



Tuesday, March 22, 2011

Ayres Hall

Los Angeles County Arboretum

301 North Baldwin Ave., Arcadia, CA 91007

~ DOOR PRIZES ~

9:00 a.m. – Complimentary Refreshments
Entertainment by the Music Man
10:00 a.m. – Meeting Begins

SECURED FINANCIAL INVESTMENTS

Savings Accounts, Money Markets, Checking, Annuities
FDIC – NCUA – Insurance & More
Panel of Experts for Questions & Answers

Retiree Information from LACERA & RELAC

You will need your RELAC Membership Card. At the end of the program members are welcome to tour the Arboretum at no cost.



IMPORTANT!
Are you moving?
Did you change your name?

Cut out the address portion of this newsletter, correct it and mail to:

RELAC
1000 S. Fremont Ave.,
Unit 15 Alhambra, CA
91803-8802 or
Phone:
(800) 537-3522
(626) 308-0532
Fax: (626) 308-2901
Email:

admin@relac.org
website:
www.relac.org

Note: It is important that you mail this to RELAC or contact RELAC by phone as we DO NOT receive your address change from LACERA.



Driving Directions:

From Rte. 210 Fwy. Going either eastbound or westbound, exit at Baldwin Avenue. Proceed South on Baldwin Avenue ¼ mile. Turn right into the first driveway and park in front of Ayres Hall.

From Huntington Drive go North on Baldwin Avenue 1 ¼ miles. Turn left at the traffic signal and enter the parking lot. Ayers Hall is located just off the Northerly portion of the lot.

(Parking may be limited - see page 3 for details)