



# RELAC newsletter

Celebrating 50 Years of Dedicated Service to L.A. County Retirees

Sept./Oct. 2011 Vol 46-5

## President's Message

by Bill de la Garza



Dear Friends,

The LACERA Board Elections have been completed and I'm very pleased to inform you that your RELAC endorsed candidates who represent retirees were all elected for new three year terms. The individuals whom you helped to re-elect are:

**Bill de la Garza (Eighth Member)**  
**Board of Retirement**

**Diane Sandoval (Eighth Member)**  
**Board of Investments**

**Ed Morris (Alternate Member)**  
**Board of Retirement**

On behalf of your RELAC team (Diane, Ed and Bill) we would like to thank you for your valuable assistance and your confidence in helping us to get re-elected and to continue serving you. Since we first took office our platform and basic goals have never changed. **"To Enhance, Maintain, and Protect Pension and Medical Benefits for all Retired Employees of Los Angeles County."**

As your representatives this will continue to be our top priority. The success of the LACERA election is because of you, our RELAC members. We pledge to you our continued efforts and sincere commitment.

There are many RELAC events coming up. As your President I urge you to read your newsletter and to come out and enjoy your RELAC sponsored activities. I would like to thank Diane Sandoval and her Regional Support Committee for putting together an outstanding regional support meeting on July 19<sup>th</sup> in Huntington Beach.

Good friends and retired co-workers, until next time, stay healthy and enjoy your retirement. If you need any information, call the RELAC office at (800) 537-3522. As customary, I leave you with this thought:

*"Do something every day that maintains your good health"*

H. Jackson Brown Jr.



## ELECTION FOR SEATS ON THE RELAC BOARD OF DIRECTORS IS IN PROGRESS

RELAC members are being asked to elect five persons to serve three-year terms on the RELAC Board of Directors. In accordance with the bylaws the Board has selected a slate of five candidates whom they consider to be highly qualified. All five have demonstrated leadership and a strong commitment to serving the interests of Los Angeles County's retired employees. Each of the five has made significant contributions to meeting RELAC's goal of providing a high level of service to its members.

**Mary Lou Bangar, Ray Guyovich, Ed Morris, and Greg Walia** are all incumbent members of the Board of Directors and each has served as President of RELAC. All have served productively on a variety of committees. Mary Lou's distinctive contribution was as Chair of the Management Committee overseeing the operations of the office and bringing RELAC into the computer age. Ray instituted the annual picnic and has had principal responsibility for the annual Installation Luncheon. Ed ably manages RELAC's finances in his role as Treasurer and he has been re-elected by County retirees to the position of Alternate Eighth Member of the LACERA Board of Retirement. Greg's most notable achievement was to institute RELAC's program of supplemental benefits.

**Jason Williams** has been highly active in RELAC serving on and making significant contributions to the Recreation, Regional Support, and Investments Committees. This constitutes a remarkably high level of activity for a non-Board member. There can be no doubt about Jason's commitment to serving retiree interests.

**Please be sure to vote in the RELAC Board election.**

## Doris Wallace Fletcher Not Endorsed by RELAC for Election to the LACERA Board of Retirement

SEIU 721 endorsed Doris Wallace Fletcher for the Retired Member (8<sup>th</sup> Member) and Alternate Member in the LACERA election recently in progress. Until sometime between the afternoon of Wednesday, July 20 and 8:40 a.m. on Thursday, July 21 SEIU 721's website contained a statement that "Both AFSCME retiree members and Retired Employees of Los Angeles County have given Doris their endorsement..." In addition the same statement is made in SEIU's "Senior Voice" bulletin that was recently distributed in the mail.

**RELAC did not endorse Doris Wallace Fletcher.**

# Investments Board

by Diane Sandoval  
Retiree Representative,  
LACERA Board of Investments



## Grand Jury Praises Los Angeles County Retirement System

We should all be pleased with the 2010-2011 Los Angeles County Civil Grand Jury's comments about LACERA and Los Angeles County. The County Civil Grand Jury found LACERA to be a **well run organization**. They praised the County for taking deliberate steps toward controlling and lowering pension costs over the past 30 years. **They found the pension system in good shape and without threat of default on its obligations.**

As Los Angeles County retirees we should be grateful to the **LACERA Boards** and staff under the leadership of **Gregg Rademacher** for their stewardship in protecting our pension fund. We should also thank the Los Angeles County Board of Supervisors for controlling pension costs by implementing benefit tiers (Plans B, C, D and E for general members and Plan B for safety members) over the past 30 years.

The Grand Jury recommended that the Board of Supervisors take steps to curb pension spiking through the use of three-year final compensation, eliminate employee buy back of benefits, stop paying longevity bonuses, cap pensionable salaries, reduce retiree healthcare benefit level, require the retiree to shoulder a larger portion of healthcare cost, and begin funding the retiree healthcare obligation. Since our pension benefits are protected by State Law, any of these changes which are adopted, except for funding of health care benefits, will apply only to **future** employees/retirees. The recommendation to fund our healthcare benefits is great news!

## LACERA's Investments Performed Well in 2010-11 Fiscal Year

LACERA's portfolio as of the end of the fiscal year (July 1, 2010 through June 30, 2011) has held its own in spite of the continued financial uncertainty. According to a staff memorandum dated July 26, 2011, as of June 30, 2011 the portfolio generated an **estimated** gross return of 20.4% (significantly above the assumed investment return of 7.75%). The **estimated** market value of the portfolio as of June 30, 2011 is \$39.2 billion. **These are unaudited figures.** LACERA will submit an audited report by October 31, 2011. As you are no doubt aware, in the new fiscal year the markets have gotten off to a very rocky start, but it is too early to project the results for the full year. I will keep you posted.

As I sat here writing my article it was difficult to ignore the extensive media coverage about raising the nation's debt ceiling and reducing the budget deficit to avoid downgrade of the United States by the crediting agencies. At first I hesitated to even mention it for fear I would alarm you. However I am relieved public pension leaders are taking action by sending an open letter to our elected representatives. John Mc Clelland, LACERA's Interim Chief Investment Officer, joined leaders from some of the nation's largest public pension funds who represent more than one trillion dollars in assets in calling on President Obama and Members of Congress to act immediately to address the nation's deficit to avoid a downgrade of the United States by credit agencies. RELAC has posted the entire text of the letter along with a list of the signatories on our website, [www.relac.org](http://www.relac.org).

## RELAC Board Recommends Against Signing Ballot Initiative Petitions

The attack on public employee pensions is in full swing. Five ballot initiatives bearing upon public sector pensions have been submitted to the California Attorney General, whose role it is to assign a title and prepare a summary for each proposed initiative. As we go to press we do not yet know what the exact titles will be, but based on the following descriptions, you will recognize each of the initiatives when you are asked to sign the petitions to put them on the ballot.

**Michael Lee Madsen's** proposed initiative would require all public retirement systems to invest 85% of its assets in California companies. This would have the result of preventing retirement funds from being invested where they will earn the best returns with the least risk. It could be very harmful to retirees and to tax-payers. The Board's recommendation is **do not sign this petition**. By the time you read this it is likely that the petition will be circulating.

**Alan Oliver Ebenstein** of the **California Center for Public Policy** has submitted three proposed initiatives, one of which the RELAC Board has taken a strong position in opposition. The initiative would add a 15% tax on public pensions over \$100,000 per year, and add a 25% tax on pensions over \$150,000. Although the initiative applies only to the state retirement systems, CalPERS and STRS, if it is adopted by voters it will likely be followed by similar efforts to apply such taxes to other public agencies including LACERA, and to add taxes on public pensions below \$100,000. The petition will begin circulating in early September. The recommendation is **do not sign this petition**.

**Edward J. Costa and Robert J. Matteoli** of **People's Advocate** have proposed an initiative which they call the **Public Pension Solvency Act**. It is a lengthy and complex document whose essence is to set in stone policies and practices which would largely take all authority and discretion from all public sector Retirement and Investments Boards. One example of its highly undesirable provisions is that when a retirement fund is less than 100% funded the COLA increases for pensions paid from the fund would be cut in half. The sponsors call this a "diet COLA". While many of the provisions do not directly apply to those already retired, LACERA and other public retirement systems would lose the capacity to manage their assets effectively and in the best interests of all of its members. **Definitely do not sign this petition.**

*continued on bottom of page 5*





**THE BIGGEST EVENT OF THE YEAR \$15.00 INCLUSIVE**

RELAC'S

# ANNUAL PICNIC

**LINE DANCING**  
with Jennifer & The Hyland Band

**HORSESHOE TOSS**

SANTA FE DAM – RECREATIONAL AREA #5  
15501 E. ARROW HIGHWAY, IRWINDALE

**FREE PARKING**

**OCTOBER 1, 2011**  
**10:30 A.M. TO 3:00 P.M.**

**More prizes than ever before!**  
Great Prizes – Drawings Start at 1:30 P.M.

**CATERED LUNCH – PICNIC SERVICES**  
(Food, Fun, Entertainment)

**DRAWINGS..and More**

LUNCH SERVED AT 12:30 P.M.  
St. Louis Style Ribs ~ Tender Chicken Breasts ~ Hot Dogs  
Baked Beans ~ Fresh Fruit  
Corn on the Cob ~ Cole Slaw ~ Potato Salad  
Rolls & Butter ~ Gourmet Cookies ~ Brownies  
All the Soft Drinks & Beer you can drink

BRING A FOLDING CHAIR *(If you want to sit closer to the music)*

MEMBERS & ADULT GUESTS



## ADULTS ONLY ~ **REGISTRATION FORM** ~ ADULTS ONLY

Date Retired \_\_\_\_\_ Department Name \_\_\_\_\_

Member \_\_\_\_\_ Guest \_\_\_\_\_

Additional Guests - attach list

Number of tickets \_\_\_\_\_ @ \$15.00 ea. = \$ \_\_\_\_\_ Total \$ \_\_\_\_\_

Mail to: Relac  
1000 So. Fremont Ave., Unit 15  
Alhambra, CA 91803-8802

Info: (626) 308-0532  
(800) 537-3522  
email: admin@relac.org

Present RELAC Membership Card at entrance to park. NO admission without advance registration.  
**RSVP by September 22 , 2011**

# Welcome New Members

## June & July 2011



### **Assessor**

Bell, James H.

### **Auditor Controller**

Nelson, Dianne

Oms, Maria M.

Zepeda, Uda M.

### **Beaches & Harbors**

Triplett, Larry J.

### **Child Support Services**

Castro, Joyce

### **Children & Family Services**

Elliott, Regina

Hams, Marcia

Taylor, Deloris J.

### **County Counsel**

Tyrrell, Thomas M.

### **District Attorney**

Lynch, John F.

Smalls, Madeline

Tucker, Patricia R.

### **Fire Department**

Garcia, Miguel

Norton, Thomas J.

Schlegel, Edmund J.

Warner, Richard

### **Harbor-UCLA Medical Ctr**

Frazier, Lorrene E.

Medley, Nancy M.

### **Health Services**

Berry, Zora

Givens, Lawrence B. Jr.

Haywood, Marilyn H.

Perez, Esperanza

Williams, Robert.

### **Internal Services**

Costigame, Garry S.

Gardner, Rodney V.

Go, Veronica

Gordon, Theodore M.

Tran, Phil

### **LAC/USC Medical Center**

Gatling, Olges

Gittisarn, Sornsark

### **Mental Health**

Bennett, Vonalie

Elsner, Nickolas

### **Municipal Court**

Thayer, Marilyn

### **Parks & Recreation**

Jones, Arthur J.

### **Probation**

Acosta, Ruben O.

Barnett, Lynn

Bournes, Mary Ann

Genera, Jean

Johnson, Delphine

Martin, Marion, Jr.

Melsek, James E.

Overbeck, Thomas A.

### **Public Defender**

Hernandez, Sergio J.

### **Public Health Services**

Cambaliza, Renee M.

Encinas, Claudia A.

Mitchell, Bobbie Jean

Mosby, Robert

Nguyen, My-Ngoc

### **Public Library**

Guagliardo, Victoria E.

Rico, Yolanda

### **Public Social Services**

Asmar, Francis H.

Consing, Alice P.

Duran, Sandra

Martin, Alice

Miletich, Robert S.

Peralta, Hilda

Richardson, Cynthia L.

Rojo, Mike R.

Sanchez, Alicia

Ulwelling, Sandra

### **Public Works**

Olivier, Michael L.

Stephens, Alex

Stringer, David N.

### **Rancho Rehabilitation Ctr**

Gonzalez, Eloise

### **Registrar Recorder/Co.Clerk**

Hayes, Vivian Lee

Juloya, Edelwina D.

### **Sheriff**

Cook, Edison M., Jr.

Cooper, David S., Jr.

Jones, Pamela Zoe

Perdomo, Velma

Romero, Jose L.

Thompson, Michael T.

Viloria, Edna F.

Walker, Keith C.

### **Superior Court**

Hana, Bridget

Pollack, Ruth

Regalado, Gerald T.

Wang, Su-Hsia

### **Department Not Designated**

Evans, Frankie E.

Hum, Sue

Lang, Aracelia

Lee, Cynthia

Smith, Dora D.

### **New Affiliate Members**

#### **District Attorney**

Maliksi, Erlinda R.

### **New Associate Members**

Acosta, Susan

Asmar, Emily F.

Bell, Sandra

Carpio, Modesto

Castro, Salvador

Clark, Gary N.

Duran, Dan

Encinas, Michael

Esquibel, Augustine

Gawronski-Elsner, Ava

Gittisarn, Petch

Givens, Paulette C.

Gordon, Frances R.

Greene, Cristina

Hams, Stanley

Haywood, Foster

Lee, Kok Wain

Martin, Birdie G.

Miletich, Theresa

Munroe, Jacqueline M.

Nguyen, Dat T.

Oliver, Eva C.

Overbeck, Marlene M.

Perdomo, Samuel

Rojo, Hilda M.

Romero, Cynthia A.

Smalls, Marilyn

Stringer, Judy M.

Thompson, Judy

Tran, Huong

Triplett, Geneva D.

Ulwelling, Cary

Uribe, Francisco

Vass, Melinda

Velarde-Hernandez, Diane

Viloria, Ernesto B. Sr

Walker, Karen M.

Williams, Antionelle

Wang, Alan

Warner, Leslie

# LAST CALL FOR RESERVATIONS

## RELAC

### DAY AT THE RACES

### SANTA ANITA PARK

by Mary Rodriguez  
Chair, Recreation Committee



Hello everyone.

It's time to return to Santa Anita Park for another day at the races. In the past this event has been enthusiastically attended by our members. Everyone enjoys it and has a lot of fun.

This year will be no exception! We will again be seated in the Sierra Vista Terrace which offers a great view of the track. The event date is October 6, 2011. The cost is \$33.00 (same as previous years) and includes admission, valet parking, a racing program and, of course, a great buffet luncheon, soft drinks and dessert.

Please fill out the coupon and send your check ASAP. The reservation deadline is September 22, 2011. Your tickets will be mailed to you by September 28, 2011. Please let us know if you do not receive your tickets by October 4, 2011.

Our space is limited so don't be left out. Hope to see you there.



### RELAC DAY AT THE RACES

**Santa Anita Park**  
**Thursday, October 6, 2011**

Name: \_\_\_\_\_

Address: \_\_\_\_\_

City/State/Zip: \_\_\_\_\_

Telephone Number: (\_\_\_\_\_) \_\_\_\_\_

(Attach separate list for additional guests)

Number of Tickets \_\_\_\_\_ @ \$33.00 each

Total Amount Enclosed = \$ \_\_\_\_\_

Enclose a check for your total payable to RELAC and mail to:

RELAC Races  
1000 South Fremont Avenue, #15  
Alhambra, CA 91803-8802

**Must be received by September 22, 2011**  
**Tickets will be mailed by September 28, 2011**

For office use:

Received \_\_\_\_\_ Amount \$ \_\_\_\_\_ Check No. \_\_\_\_\_

## Veteran's Corner



I am a retired Los Angeles County employee. I receive the RELAC Newsletter and I was never motivated to write to RELAC until I read this month's issue. Just want to let you know I thoroughly enjoy the Veteran's Corner. These brave men deserve the recognition. Please keep it coming. My husband, Felipe V. Gomez, served in WWII in the Pacific. He was not allowed to go into combat until he turned 18. He is now 85 and being cared for in a residential care home. All his war memories are gone now, but he was proud to have served his country. Thank you for letting me share a part of his story.

**Trini Gomez**  
**Yorba Linda, CA**

I was born October 15, 1923. I graduated high school in 1942 after Pearl Harbor. In 1943 I took Basic Training in Camp Crowder in southwest Missouri. After that I was sent to Holabird Signal Depot in Baltimore, Maryland for further training. From there I went by ship to about 20 miles south of Guadalcanal to British New Guinea. After about a week, I was sent to Hollandia in Dutch New Guinea. I became a casualty while there and spent about six weeks in a local hospital. On to Cebu, Philippines; I was there when President Truman (the only honest Democrat to live in my time) had the Atomic Bombs dropped. He saved my life as we were scheduled to go into Tokyo on the third day. I was discharged from the Army on February 23, 1946 and graduated from the University of Illinois in January 1951. As a civilian I went to Pearl Harbor for two years. While there, I saw General Omar Bradley and President-Elect Eisenhower returning in an aircraft carrier from a visit to Korea and the Battleship Iowa which was the only ship equipped with a bathtub for President Roosevelt during World War II. I came to Los Angeles in 1953 and retired from the County in 1981. I started as a Building Inspector and retired as a Registered Civil Engineer. So many people I worked with have died. I am still alive and almost 88!

**Ray Edwards**  
**San Gabriel, CA**



### Investments continued from page 2

will be issued and mailed on time. LACERA has sufficient reserves to meet its financial obligations to retirees. Don't forget – the 2010-2011 Los Angeles County Civil Grand Jury found the pension system to be in good shape and without threat of default on its obligations. As always, thank you for your continued support.

Travel safely and enjoy your retirement!



## VISA CARDS



- No Annual Fee
  - Real Time Fraud Monitoring\*\*
  - ZERO Liability\*\*
  - Identity Theft Assistance\*\*
- and so much more!



Membership is subject to eligibility. All new accounts will be verified through ChexSystems and are subject to credit approval. \*APR=Annual Percentage Rate. 2.99% introductory APR for one year, based on your creditworthiness, available on Platinum cards only. After that, your APR will be 8.99% - 11.99%. This APR will vary with the market based on the Prime Rate. Classic cards APR of 14.99% - 16.99% based on your creditworthiness and will vary with the market based on the Prime Rate. Balance transfer, cash advance, foreign transaction, and other fees may apply. Terms, features, programs, and conditions subject to change. \*\*Program conditions and restrictions may apply.



[www.SouthlandCU.org](http://www.SouthlandCU.org) • 800.426.1917

## For Sale

**2003 FORD EXPEDITION** - Good condition, 171,000 miles, \$6,800. Call Judith at (626) 437-7640.

**VACANT LAND** - Five (5) plus acres near Grass Valley, CA. Slightly sloped, wooded with level building pad. All utilities are in place or available. Contact by email: [ceklasd@earthlink.net](mailto:ceklasd@earthlink.net).

**MEMBERSHIP AT MOUNTAIN LAKES RESORT, LYTLE CREEK, CA** - Affordable price. Call (626) 810-9816 or (626) 261-1009 (ask for Joanne).

**CEMETERY LOTS** - Offering four (4) burial plots, Rose Hills Memorial Park, Whittier, CA, Garden of Affection, Lot 5240, Spaces 1 thru 4. Asking \$14,000 for all four or willing to sell two together for \$8,000. Will pay transfer fee of \$200 per lot, transfer to take place at the Rose Hills Administrative Office. Please call Jerry at (760) 251-2161 or Maria at (760) 251-9274 for details.

## DO YOU KNOW THESE PEOPLE?



Thank you RELAC members for your help! We appreciate it and are making progress. Here are a few more names for you to ponder. In most cases, we believe these members have moved and not given us their forwarding address. If you are in contact with any of the following "lost" RELAC members, please ask them to call us at (800) 537-3522 or email us at [admin@relac.org](mailto:admin@relac.org).

Muhammad Antar  
Abigail Basse  
Irsyl Bates  
Myrtle Beesley  
David Bethany  
Bobbe Perry  
Helen Perry  
Franklin Reavis

Edgar Reed  
Charlotte Shick  
Thomas Shoden  
James Shuler  
Keith Tindall  
Songsiri Tipayakesorn  
Donald Tisdale  
Lola Webb

**RELAC DOES NOT RECEIVE REPORTS OF ADDRESS CHANGES MADE TO LACERA SO BE SURE TO LET US KNOW IF YOU MOVE!**

## RELAC NEWSLETTER

Vol 46 - Sept/Oct 2011  
Number 5

Retired Employees of  
Los Angeles County  
1000 S. Fremont Ave.  
Unit 15, Alhambra, CA  
91803-8802  
(626) 308-0532  
(800) 537-3522  
Fax (626) 308-2901  
E-mail: [admin@relac.org](mailto:admin@relac.org)

### Board of Directors

President

**Bill de la Garza**

Vice President

**Diane Sandoval**

Secretary

**Mary Lou Bangar**

Treasurer

**Edward C. Morris**

Past President

**Greg Walia**

### Members

**Donald Fandry**

**Martin Golds**

**Raymond R. Guyovich**

**George Hernandez**

**David L. Muir**

**Alice Prouty**

**Ida Leon Ramos**

**Marianne Reich**

**Mary K. Rodriguez**

### Emeritus

**Dave E. Kalinge**

Editor: Martin Golds  
Copyright © 2011 by  
RELAC This information  
presented in your RELAC  
Newsletter is believed to  
be from reliable sources.  
However, no responsibility  
is assumed by RELAC or  
the writers for inaccuracies  
in the articles as published.

### Office Hours

9:00am - 4:00pm

Monday - Thursday

Closed Friday, Saturday,

Sunday &

Public Holidays

website:

[www.relac.org](http://www.relac.org)

## Golf News

By Gil Sandoval  
RELAC Golf Director



### Los Verdes Golf Tournament July 25, 2011



We had the most beautiful day I can remember at Los Verdes. Jim Noyes edged out guest Rick Richter for the win in the "A" flight with a net score of 69.

The "B" flight was close, as Bob Kubo was one ahead of Ralph Lai at net 73. John Wehrly continues playing well and won the "C" flight with a net 72.

The Ladies flight was an easy win for Charlene DeBie as her net 71 was 10 better than the 2<sup>nd</sup> place finisher.

A blind draw Partner Best Ball competition has been added to our schedule at Lakewood in October. We will be matching up a 19 and under handicap player to a 20 or higher handicap player to even out the competition.

### Los Verdes Results:

#### "A" Flight Winner (19 and Under)

- 1<sup>st</sup> Jim Noyes (69)
- 2<sup>nd</sup> Rick Richter (70)
- 3<sup>rd</sup> Jerry Clayton (72)

#### "B" Flight (20-27 Handicaps)

- 1<sup>st</sup> Bob Kubo (73)
- 2<sup>nd</sup> Ralph Lai (74)
- 3<sup>rd</sup> Ed Acosta (76)\*

#### "C" Flight (28 up Handicap)

- 1<sup>st</sup> John Wehrly (72)
- 2<sup>nd</sup> Jerome Clayton (75)
- 3<sup>rd</sup> Terry Black (76)

#### Ladies

- 1<sup>st</sup> Charlene DeBie (71)
- 2<sup>nd</sup> Cari DeBie (81)
- 3<sup>rd</sup> Christine Core (83)

\*Winner in a card off.

#### Closest to the Pin on Par 3's

##### Men

- # 3 - Gene Danbara
- # 5 - Frank Barajas
- #12 - Randy Evans
- #17 - Benny Martinez

##### Women

- # 3 - Cari DeBie
- # 5 - No Winner
- #12 - Charlene DeBie
- #17 - No Winner

### NEXT TOURNAMENT

**Monday, Oct. 3, 2011**

Lakewood Country Club-8:00 a.m. start

Entry Deadline: Sept. 16, 2011

## RELAC Golf Entry Form



Lakewood Golf Course  
3101 E. Carson Street  
Lakewood, CA 90712

**Monday, October 3, 2011**

**8:00 A.M. Start**

Please Print

1. Name \_\_\_\_\_

Address \_\_\_\_\_

City \_\_\_\_\_ Zip \_\_\_\_\_

Phone \_\_\_\_\_

Fees: \$32.00 PER GOLFER - CART EXTRA

If possible, place me in a foursome with below listed golfers. Addresses of all golfers MUST be included.

If possible, we would prefer an  
Early \_\_\_\_\_ Late \_\_\_\_\_ starting time.

2. Name \_\_\_\_\_

Address \_\_\_\_\_

City \_\_\_\_\_ Zip \_\_\_\_\_

Phone \_\_\_\_\_

3. Name \_\_\_\_\_

Address \_\_\_\_\_

City \_\_\_\_\_ Zip \_\_\_\_\_

Phone \_\_\_\_\_

4. Name \_\_\_\_\_

Address \_\_\_\_\_

City \_\_\_\_\_ Zip \_\_\_\_\_

Phone \_\_\_\_\_

NOTE: Only ONE GUEST per member.  
Enclose check for \_\_\_\_\_ golfers @ \$32 per  
Golfer. Make checks payable to RELAC Golf.  
Mail entry to RELAC GOLF, 1000 So. Fremont  
Ave., #15, Alhambra, CA 91803-8802

**Entry Deadline  
September 16, 2011  
ALL CHECKS MUST BE  
IN RELAC OFFICE**

For Office Use:

Date Rec. \_\_\_\_\_ Amt.\$ \_\_\_\_\_

Ck# \_\_\_\_\_



# Members Spotlight



## AN INVITATION FROM

### SISTERS TOGETHER IN RETIREMENT (STIR)

#### VIEJAS INDIAN CASINO ANNUAL FUND RAISER

Sisters Together in Retirement (STIR) are a group of female retirees from various Los Angeles County and City Departments such as Probation, educational institutions and the lay community. We would like to invite you, your family members and friends, to join us on our annual casino trip to the Viejas Indian Casino on Tuesday, October 18, 2011. The casino is located in the County of San Diego, California. Our fee for an enjoyable and fun ride to San Diego is \$12.00 and includes a continental breakfast, games with prizes, a movie and several musical selections. There will be two departure locations. Our first bus leaves Crenshaw and 120<sup>th</sup> Street at 9:00 a.m. sharp. The second bus will be awaiting our 9:20 a.m. arrival in the parking lot at 17220 Lakewood Boulevard (Stater Brothers) in the City of Inglewood and will leave at 9:30 a.m. sharp. If you are interested in joining us you may contact: Wivory Brandle (323) 296-2370, Katie Cochran (310) 608-0687, or Helen Walker (626) 335-6431. Thank you in advance on behalf of STIR members.

## SEE'S CANDIES

### DISCOUNT CONTINUES



Some holiday traditions are just too good to abandon! As in the past, See's Candies will honor your RELAC Membership Card to confirm eligibility for special holiday discount rates for their products. These discounts apply to pre-boxed candies of milk chocolates, dark chocolates, soft centers, assorted and nuts and chews in one pound or larger quantities. Significant discounts also apply to their fancy gift boxed candies and specialties which make great gifts for the kids!

Call (800) 877-7337, tell the See's representative you are a RELAC Member, where you live, and ask for the location of the quantity order shop nearest your home. Be prepared to show your RELAC Membership Card at time of purchase. Our organization's discount eligibility is confirmed beginning December 1, 2011 through October 31, 2012.



## VOLUNTEER OPPORTUNITIES

### The Richard Riordan Central Library Seeks Volunteers to Lead Art and Architecture Tours of the Library and its Gardens

The Los Angeles Public Library, 630 West 5<sup>th</sup> Street, is now accepting applications for the winter, 2012 docent training class. The volunteer program offers the opportunity to learn about the history, art, architecture and gardens of the historic Central Library as well as how to conduct tours for various groups of visitors.

Weekly training classes will begin Thursday, January 19, 2012 and will run through February 16, 2012. Experienced docents will mentor trainees as they lead practice tours. After completing the training, docents will be expected to give two tours a month for a two-year period. Tours are conducted throughout the year during library hours and docents can sign up one month in advance, giving each docent scheduling flexibility. Reimbursed parking is provided.

For an application or to learn more, interested volunteers can call (213) 228-7283 or visit <http://www.lapl.org/about/volunteer.html>.

## September & December General Membership Meetings

by Mary K. Rodriguez  
Chair, Program Committee



### City of Carson - September 20, 2011

Please plan to join us at our next General Membership Meeting which will be held on September 20, 2011 at the City of Carson Community Center, 801 East Carson Street, Carson, CA. Refreshments will be served at 9:00 a.m. and the program will begin at 10:00 a.m.

Members of the Los Angeles County Fire Department Community Service Division will be discussing some of the fire, emergency medical and other community emergency services that retirees should be aware of.

### See the back page for more information

### Diamond Bar - December 5, 2011

Once again we were unable to return to our traditional location, Saint Sophia's Parish Hall, because of continued renovations. Please note that this year's "Holiday Meeting" will be held at the beautiful Diamond Bar Senior Center in Diamond Bar on December 5, 2011. Mark your calendars and prepare yourself for an exciting and entertaining holiday program. Starting at 9:00 a.m. there will be great refreshments followed by the meeting at 10:00 a.m. You will be entertained by the beautiful voices of the Citrus College Women's Ensemble – a special treat. There will be a grand raffle for those in attendance and numerous gifts will be given away. Please plan to join us for a festive and enjoyable event.





This is to thank you and the RELAC Outreach Committee for the beautiful birthday greeting. I am simply humbled by your thoughtfulness and kind expression for my New Year! Again, thank you and may God bless you as you continue your great work.

**Willie Mae Bailey**  
Inglewood, CA

I had two 94<sup>th</sup> Birthdays – one on June 26, 2011 and another on July 9, 2011 when I received your birthday card. Made me think of the BAD and GOOD things that happened to me when I worked for the County of Los Angeles doing the noble job. God protect us all. With gratitude,

**Rutilia Atanasoff**  
Fuquay-Varina, NC

I support Simon Russin for the LACERA Board of Investments. As a long-time retiree, I am most appreciative of the way our Board of Investments has managed to keep our funds securely invested in this economic nightmare we have inherited! I have lived through the rest; but this one is the most obviously unwarranted and yet the abusive antics of trusted government representatives (hired by we the voters) go unpunished! We deserve better representation, but unless we UNITE, we will not get it and do not deserve it. We are our own worst enemies. With the Internet, there is no excuse to be uninformed.

**Nikki Campbell**  
Carson City, NV

Dear Friends at RELAC! I am sending many thanks to you for your kindness in my retirement. I so appreciate the many ways in which you all bless and protect our retirement benefits--both at the local and state levels. My husband, James R. Craycroft, dearly loved the Los Angeles County Fire Department and it grieved him to be put off duty due to a medical evaluation. He died later of lung cancer. There are times when I read the newsletter and notice that attendees at General Meetings must present a RELAC card. I don't seem to have one or it has been misplaced years ago. May I have a new one? I haven't driven to the L.A. area in years. However, I am thankful to still drive locally. Thank you again for all that you do.

**Marguerita Craycroft**  
La Mesa, CA

*Editor's Note: A RELAC membership card has been sent to Marguerita.*



## RV Outing Notes

Ed Clifton  
Coordinator of RV Club



Since we did not have an outing in the months of June/July/August 2011 there is nothing to report. As you receive this issue of the Newsletter, we will be getting ready for our next outing which will be September 12-14, 2011 at the Chula Vista RV and Marina Resort in Chula Vista. The coupon was published in the last edition of the Newsletter. I will give you the details of our September outing in the November/December Newsletter. Our October/November outing will be held at the Shadow Hills RV Resort in Indio, CA on October 31, 2011/November 1-2, 2011 (early day – October 30, 2011). Coupon follows.

*Hope everyone had a safe and enjoyable summer!*

### R.V. CAMPOUT RESERVATION

CAMPGROUND: SHADOW HILLS RV RESORT  
40-655 Jefferson Street  
Indio, CA 92203



DATES: **OCTOBER 31, 2011 - NOVEMBER 1-2, 2011**  
**Early Day - October 30, 2011**

Names: \_\_\_\_\_  
(Last) (Retiree) (Spouse)  
Address: \_\_\_\_\_  
(No.) (Street)  
City: \_\_\_\_\_  
(State) (Zip)  
Telephone: ( ) \_\_\_\_\_

**DEADLINE: SEPTEMBER 27, 2011**

Cost: \$138.00 for three days; \$45.00 per day for additional days.

Please make checks payable to Jesse Murph, Wagon Master, and mail to:

Jesse Murph  
13039 Troy Court  
Victorville, CA 92395  
(760) 955-7607

Phone:

Motor Home \_\_\_\_\_ Trailer \_\_\_\_\_ Length \_\_\_\_\_



*Supervisor Mike Antonovich at the Supervisor's 14th Annual Veterans' Event with RELAC Board members Don Fandry, on the right and Raul Solis.*

## Legislation Report

by Dave Muir  
Chair, Legislation Committee

### Governor signs Senate Bill 203, changing the way vacancies on the Board of Retirement are filled.

Members of the Board of Retirement are elected or appointed for three (3) year terms. A vacancy on the Board can occur if a member dies, resigns, or for any reason is no longer able to serve. Under current law, if the regular retired member position on the Board (currently held by Bill de la Garza) becomes vacant, the alternate retired member (currently, Ed Morris) would fill the vacancy *temporarily* until such time as a special election could be held to fill the vacancy for the remainder of the three (3) year term.

Under the new legislation, when there is a vacancy in the retired member position, the alternate retired member would fill the vacancy permanently, thereby creating a vacancy in the alternate retired member position. To fill that position, the Board of Retirement would appoint a person from among candidates who were nominated by qualified retiree organizations. That person would serve until the next regularly scheduled election.

An organization is qualified to nominate a candidate if a majority of the organization's members are LACERA retirees. That would include RELAC, SEIU Local 721 Seniors, and other organizations that could be formed in the future.



## RELAC Urges Congress Act to Make Social Security Fair

RELAC President Bill de la Garza has written a letter to Congressman Sam Johnson, Chairman of the House Ways and Means Subcommittee on Social Security urging that the Committee pass HR1332 "The Social Security Fairness Act of 2011" The letter points out that retired County employees who paid into Social Security have suffered substantial reductions because of the Government Pension Offset (GPO) and the Windfall Elimination Provision (WEP).

Having worked to earn Social Security Benefits and having paid their share for both their pensions and Social Security, public employees are fully entitled to all they have earned. Those who receive pensions from private employment and Social Security are not similarly penalized. The letter also points out that repealing the unfair GPO and WEP laws would put more cash in the hands of retirees, much of which will be spent and will aid in stimulating the economy.

*RELAC Members: You can add your voice to the movement to repeal GPO and WEP. You can write to:*

The Honorable Sam Johnson, Chairman  
U.S. House of Representatives  
Ways and Means Sub-Committee on Social Security  
B-317 Rayburn House Office Building  
Washington D.C. 20515

## REAL ESTATE



### Purchase or refinance your Mortgage Loan with Southland and save!

- Low Rates
- Flexible Terms
- Funding in as little as 30 days

#### Purchase Options

- Financing for primary residence, second homes, and investment properties
- 15, 20, 30, or 40-year low fixed-rate Mortgage Loans
- Adjustable Rate Mortgages (ARM)
- Jumbo Loans available

#### Refinance Options

- You may be paying too much on your current mortgage. Take advantage of a free Mortgage review and see how much you can save!

**RELAC Members**  
Join and receive a free gift!"

**Southland**  
CREDIT UNION  
Celebrating 75 Years

Membership is subject to eligibility. All new accounts will be verified through ChexSystems and are subject to credit approval. Real Estate Loans are subject to credit approval. Due to current real estate and economic conditions, loan requests that exceed 80% of the property's value will require additional review and may incur higher costs. Loan funding is subject to membership eligibility and credit approval.



[www.SouthlandCU.org](http://www.SouthlandCU.org) • 800.426.1917



## REGIONAL ACTIVITIES

by Diane Sandoval  
Chair, Regional Support Committee

### Successful Meeting in Huntington Beach

Our regional meeting at the Huntington Beach Library on July 19, 2011 was a great success. We had close to 100 members in attendance and had two great speakers, Orange County Sheriff Sandra Hutchens and Gregg Rademacher, LACERA Chief Executive Officer (CEO).

Sheriff Hutchens has had an interesting career. She began her law enforcement career with the Los Angeles County Sheriff's Department in 1976. She worked her way through the ranks of deputy, sergeant, lieutenant, captain, commander and finally Division Chief for the Office of Homeland Security. During her tenure at the Office of Homeland Security she traveled to Israel for counter-terrorism training and served as a departmental Legislative Liaison in Sacramento and Washington, D.C. Sheriff Hutchens is one of us – a Los Angeles County retiree.

Sheriff Hutchens was sworn in as the 12<sup>th</sup> Sheriff-Coroner for Orange County in December of 2010. As the Orange County Sheriff-Coroner she leads more than 3,800 sworn and professional men and women providing a myriad of services to the residents of Orange County. She spoke about the many challenges she is facing, including budgetary constraints. As a resident of Orange County I for one am deeply grateful to have someone of her stature at the helm of the Orange County Sheriff's Department.

### LACERA Praised by Grand Jury

Our next speaker, Gregg Rademacher, LACERA CEO, spoke about the recent investigation by the 2010-2011 Los Angeles County Civil Grand Jury (CGJ) of pensions in Los Angeles County entitled, *WHOA! The State of Pension Plans in Los Angeles County*. There are 277 public pension plans administered either by CalPERS or separate individual pension trusts. LACERA, being among the 277 plans, was one of five pension plans selected by the CGJ for in-depth investigation. According to Gregg, LACERA was selected because it is perceived as being a well-run pension plan.

For those of you who are wondering if LACERA lived up to its reputation, read my investment article on page two. How's that for a tease? Gregg reminded everyone that LACERA's prime directive (yes I was a Star Trek fan) is to produce, protect and provide the promised benefits. How great it is to hear it time and time again. In his opinion, our pension benefits cannot be taken away from us; they are protected by State Law.

### Regional Activities Plans for 2012

Let's move onto 2012. The Regional Support Committee has already begun to plan for next year. Exact dates and meeting sites are being decided as of this newsletter deadline. However, we certainly are ready to share our tentative plans with you in this issue.

**PALM SPRINGS** – Tentative dates are: February 27, 28 or 29, 2012. Exact site has not been selected.

**LAS VEGAS** – Yes we are planning to return to Las Vegas and are in the middle of negotiations with the Golden Nugget Hotel and Casino. Tentative dates are: April 19, 2012 or May 17, 2012.

**LANCASTER/PALMDALE** – Our intention is to hold a meeting in late October or early November. Location of meeting is pending.

The Committee hopes you will be able to keep your calendars open and flexible. We'd love to see you at all or one of these meetings. As you can see, these meetings require extensive pre-planning. To assist you with your planning we decided to provide you with a tentative outline of our plans for 2012.

Fall is almost here – enjoy the season!

## County CEO Fujioka Featured Speaker at Installation Luncheon

January 19, 2012

by Ray Guyovich  
Chair, Special Events Committee



RELAC members, their spouses and guests are invited to the Annual Installation Luncheon on Thursday, January 19, 2012 at Almansor Court, 700 South Almansor Street, Alhambra CA. The featured speaker will be **Bill Fujioka, the Los Angeles County Chief Executive Officer**. He was informative and entertaining in his appearance at the 2008 Installation Luncheon; with four more years on the job we can expect much that is new and insightful.

The cost of a luncheon ticket will remain at \$15.00. The choice of entrees will be roast beef or chicken, with salad and dessert. A no-host cocktail hour will be held from 10:30 a.m. to 12 noon. Parking is free.

The program will include the inspired singing of the Transportation Security Administration (TSA) Chorus and the Los Angeles County Sheriff's Color Guard will present the flags.

Tickets must be purchased in advance and may be picked up at the banquet room entry. The reservation cut-off date will be January 12. Because we anticipate a full house, it is recommended that you respond as soon as possible.

### RESERVATION FORM

#### ANNUAL INSTALLATION LUNCHEON

January 19, 2012

Almansor Court, Alhambra, CA

Member \_\_\_\_\_

Spouse \_\_\_\_\_

Address \_\_\_\_\_

City \_\_\_\_\_ St. \_\_\_\_\_ Zip \_\_\_\_\_

Guest(s) \_\_\_\_\_

(Attach additional sheets, if necessary)

#### ROAST BEEF

Member/Spouse \_\_\_\_\_ \$15.00/each = \$ \_\_\_\_\_

Guest(s) \_\_\_\_\_ \$15.00/each = \$ \_\_\_\_\_

TOTAL \$ \_\_\_\_\_

#### CHICKEN

Member/Spouse \_\_\_\_\_ \$15.00/each = \$ \_\_\_\_\_

Guest(s) \_\_\_\_\_ \$15.00/each = \$ \_\_\_\_\_

TOTAL \$ \_\_\_\_\_

TOTAL ENCLOSED: \$ \_\_\_\_\_

Make check/money order payable to "RELAC" and mail to:

RELAC

1000 So. Fremont Ave., Unit 15

Alhambra, CA 91803-89802

**No later than January 12, 2012**

## News From LACERA

by Janice Golden  
Assistant Executive Officer



Every so often, I like to highlight a division of LACERA that plays an important role in the day-to-day operations of the organization. In past articles, I've talked about the Call Center and Payroll operations, since most RELAC members are familiar with both services. This time, I'd like to focus on LACERA's dedicated Internal Audit Division and discuss its role and responsibilities in the organization.

Internal Audit provides an annual assessment of the adequacy and effectiveness of LACERA's processes for controlling its activities and managing its risks. Established in accordance with LACERA's Internal Audit Charter and the Institute of Internal Auditors – International Professional Practices Framework, the Division is comprised of ten staff members. It operates under the direction of the Chief Audit Executive and is accountable to LACERA's management and the Audit Committee of the Boards. *So what does this all mean?*

In essence, Internal Audit serves as the eyes and ears of the Boards and executive management, to make sure the organization effectively meets its objectives in compliance with the law and appropriately protects the assets

of the organization. The Boards and management are ultimately responsible for the controls of the organization; Internal Audit provides assurances the controls are operating as expected.

While Internal Audit's staff prides itself on independently performing its role, these professionals do not approach their work with a "gotcha" attitude. The staff looks as much for things done properly, as it does for things that could be done better. Its vigilance provides the Audit Committee with the assurance it needs that current controls are effective and risks inherent in the organization are being appropriately managed. By balancing collaboration with independent assessment, LACERA's Internal Audit Division competently partners with the organization as a resource.

As someone who is on the cusp of retirement myself, knowing that LACERA has an Internal Audit staff adds to my comfort level that the organization remains committed to meeting its mission to produce, protect, and provide the promised benefits.

## Touring With Great Western

626-578-1161 • 800-344-7090

**RELAC DISCOUNT APPLIES !**

### Black Hills of South Dakota Last Call!



#### 9-Day LandTour Departs

**October 1, 2011**

*Mt. Rushmore • Deadwood*

*• Crazy Horse Memorial*

*High Plains Western Heritage Center*

*Custer State Park*

*• Tate & Journey Museums*

#### Tour Price Includes

Deluxe Motorcoach Transportation

14 Meals: 8 Breakfasts, 6 Dinners • 8

Nights Hotel Accommodations

Admissions and Sightseeing per Itinerary

Professional Tour Manager Throughout •

Taxes and Baggage Handling

**Double Per Person: \$999.00**

**Single: \$1299.00**

Checks only - Credit Cards - add 3%



### Pacific Coast Panorama

**9-Day Cruise - Motorcoach - Rail**

*Island Princess • Coast Starlight*

**Departs May 11, 2012**

**LOS ANGELES - SAN FRANCISCO**

**VICTORIA - VACOUVER - SEATTLE**

#### Tour Price Includes

• 5-Night Cruise - *Island Princess*

(all meals and entertainment aboard ship)

• Two Night Seattle Hotel Accommodations

• One Way Amtrak Seattle/Los Angeles

• Seattle City Tour • Dinner at Seattle Space Needle

• Pike's Market

• Port Charges and Government Fees

• Deluxe Motorcoach Transportation

• All Transfers • Tax & Baggage Handling



**Double Per Person**

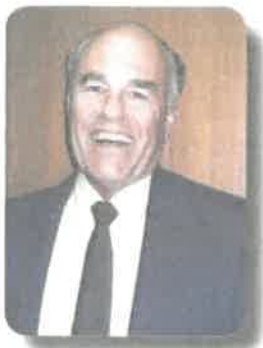
**FROM \$1899.00**



# RELAC Members to Vote on By-laws Amendments

by Ed Morris  
Chair, By-laws, Nominations, Elections Committee

Your B/N/E Committee has been working to update the Bylaws. They identified the need for some administrative or "housekeeping" changes which were submitted to and approved by the Board of Directors on July 28, 2011. These changes are non-substantive, do not affect the intent of the Bylaws and, therefore, do not require approval of the general membership.



## CALL FOR A VOTE

In addition, the committee recommended changes that will require the approval of the general membership. The call for the vote on these proposed changes will be made at the General Membership Meeting of December 5, 2011 in Diamond Bar. Three of the recommended changes are as follows:

### Article III, Section 1 – Regular Meetings

**Current Bylaw reads:** There shall be a minimum of four (4) General Membership Meetings each year. The December meeting is designated as the time for election of Directors.

**Proposed Amendment:** Delete underlined sentence. Election of Directors is addressed in Article VI of the Bylaws.

### Article IV, Section 1 – Officers (b)

**Current Bylaw reads:** The Officers shall be elected from within the Board of Directors after the December General Membership Meeting except the Immediate Past President whose office is automatic. The term of office of the Officers shall be for the period from the time of the meeting when they were first elected to the time of the meeting when their respective successors are elected. Officers may be elected to successive terms.

**Proposed Amendment:** Delete underlined words above. New wording underlined below:

The Officers shall be elected from within the Board of Directors at the November Business Meeting except for the Immediate Past President whose office is automatic. The term of office of the Officers shall be for one year commencing the first day of the month following their election. Officers may be elected to successive terms.

### Article IV, Section 1 – Officers (c)

**Current Bylaw reads:** The Board of Directors for the period of the unexpired term shall fill vacancies due to resignation or any other cause. If vacancy for the unexpired term is more than six (6) months the Board will elect a replacement at the next Board meeting. If vacancy is for less than six (6) months the replacement shall be deferred in favor of the next General Election.

**Proposed Amendment:** Delete in entirety. Filling of vacancies on the Board is dealt with in Article V, Section 4.

### Article V, Section 1 – Members (e)

**Current By-law reads:** The Board of Directors shall meet not more than twelve (12) times per year.

**Proposed Amendment:** Delete underlined words above. New wording underlined below:

The Board of Directors shall hold not more than twelve (12) regular business meetings per year and may hold special business meetings as may be required.

### Article V, Section 4 – Vacancies

**Proposed Amendment:** Added wording is underlined:

In the event of vacancies due to resignation or any other cause, the Board of Directors shall, except as provided in paragraph (b) of this section 4, elect successor(s) for the unexpired term of office from among those persons on the active list of qualified applicants as submitted by the Nominations and Elections Committee.

If a vacancy is for less than 6 months, the position shall be filled by election at the next General Election.

### Article VII, Section 1 – Standing Committees

**Proposed Amendment:** Added wording is underlined:

Executive Committee – shall consist of the Officers. The President shall serve as the chair of the Committee.

Budget Committee – shall consist of the Officers. The Treasurer shall serve as the chair of the Committee.

### Article VII, Section 2 – Other Committees

**Proposed Amendment:** Added wording is underlined:

(a) Subject to the approval of the Board of Directors, the President and/or Board of Directors may appoint other committees, including special ad hoc committees, as may be determined to be advisable. The number of members and duties thereof shall be established at the time of appointment.

(b) The President may, immediately upon taking office and without Board of Directors approval, appoint members of the committees, which appointments shall be deemed provisional until ratified by the Board of Directors at the next business meeting.

### Article VII, Section 2 – Other Committees

**Current By-law reads:** (b) Except for the Executive and Budget Committees, all committee appointments will terminate as of January meeting of Board of Directors at which time the President, with the approval of the Board, will make new appointments.

**Proposed Amendment:** Delete underlined wording above. New wording underlined below:

(c) Except for the Executive and Budget Committee, all committee appointments will terminate as of the date the President makes new appointments following his or her election.

*The remaining proposed Bylaw changes will be published in the November/December issue of the Newsletter.*

## IN MEMORIAM

*This list includes retired employees, both RELAC members and non-members.*

*\* denotes RELAC members*

### **Agricultural Comm./Wts. & Meas.**

Alegro, Dionisia M.  
Berkner, William F.

### **Animal Control**

Mitchell, Leslie L.\*  
Nicholson, Alice F. .

### **Antelope Valley Rehab Ctr.**

Huff, Sally A.

### **Assessor**

Doltar, Rudy J.  
Fukasawa, Tamio\*  
Hall, Margaret  
Johnson, Irene D.\*  
Mc Gee, Howard H.\*  
Mitsuyoshi, Sumi  
Wilson, Harvey L.

### **Auditor – Controller**

Clark, Ian D.  
Hatzidakis, George M.  
Matter, Ruth H.\*  
Miyamori, Vivian K.  
Russell, Betty M.

### **Board of Supervisors**

Pistone, Leeta L.\*

### **Chief Executive Office**

Reid, Dolores\*

### **Chief Information Office**

Bailey, Venecia\*  
Hunt, Roy H.  
Pope, John L.  
Spears, Charlie

### **Child Support Services**

De Luna, Domingo A.  
Minjares, Philip A.\*

### **Children & Family Services**

Dauteull, Miriam\*  
Fryer, Wilma G.  
Peak, Geraldine C.\*  
Yamazaki, Louise H.\*

### **Communications**

Robinson, Vivian S.

### **Community Health**

Vidosics, Grace E.\*

### **Community & Senior Svcs.**

Fox, Ruth\*  
Freedman, Arthur S.  
Kokubu, Kay\*  
Noriega, Adam E.  
Songalia, Dolores J.

### **County Counsel**

Becker, Martin A.

### **District Attorney**

Gross, Bernard  
Morrell, Robert W.  
Thyret, Mary H.

### **Engineer/Facilities**

Dugan, Margaret W.\*  
Jones, Vernon Q.  
Mack, William C.  
Strader, Robert L.\*  
Wilson, Robert C.\*

### **Fire**

Baloga, Jerome R.\*  
Caliri, Nicholas J.  
Chase, Stephen V.\*  
Crichton, Mary C.\*  
Herbert, Charles R.\*  
Morris, Barbara J.  
Noss, Wilburt O.  
Schmelzle, John R.  
Sims, Clyde H.  
Vatter, Robert J.

### **Flood Control**

Miller, Margaret J.\*

### **Forester & Fire Warden**

Ebentheuer, Richard H.\*  
Siamis, John M.\*

### **Harbor/UCLA Medical Center**

Laffoon, Grace  
Osborn, Thelma M.  
Welty, John G.  
White, Lucy A.

### **Health Services Admin.**

Ballard, Kenneth J.\*  
Celestino, Amparo G.  
Hanna, Isis  
Haynes, Joyce L.\*  
Mercado, Alicia  
Miller, Dorothy H.  
Nelson, Mary H.  
Olechno Huszcga, Ethel G.\*  
Stephens, Alejandro  
Trethewey, Anabel\*

### **Hospitals**

Griffith, Jeffrey D.\*

### **Human Resources**

Lance, Alpha  
Miller, Helen

### **Internal Services**

De Silva, G. Keith\*  
Fives, Edwin A.  
Holefield, Darnell  
Schwartz, Milton  
Showalter, Kenneth H.  
Wiley, Joe L.

### **King/Drew Medical Center**

Brown, Donnie R.  
Gillis, Naomi R.\*  
Hall, Clellan J.\*  
Johnson, Evie  
Kirk, Doris A.  
Stills-Steen, Thelmon D.  
Underwood Jr., William P.  
Walker, Phyllis D.

### **LAC+USC Medical Center**

Andrews, Eldridge C.  
Bailey, Carl D.\*  
Bell, Leslie E.  
Castillo, Irene S.  
Doyle, Pauline Y.  
Jackson, Stella B.  
Lopez, Joann  
Marshall, Howard  
Nobles, Esther L.  
Otero, Ana M.  
Perry-Jones, Marcia  
Smith, Sally M.  
Tagle, David

### **Mechanical**

Benson, Robert A.  
Edwards, George L.\*  
Haalcke, Edna J.\*  
Holmes, Merrill W.\*

### **Mental Health**

Hayes, Gloria D.\*  
Kaplan, Rosa F.\*  
Rockliff, Burton W.\*

### **Municipal Court**

Culley, Joyce I. (Alhambra)  
De Rossett, Linda J.\* (Pomona)  
Ellis, Chiarina B.\* (Compton)  
Henderson, Anne R. (Long Beach)  
Rinaldi, Judith A. (Santa Monica)

### **Olive View Hospital**

Crawford, Elizabeth  
Froman, Seymour\*  
Gaudi, Lorraine I.



## IN MEMORIAM

*This list includes retired employees, both RELAC members and non-members.*

*\* denotes RELAC members*

Hernandez, Josephine  
Herzog, Christine M.  
Moss, Jerome\*  
Ramirez, Rita M.  
Small, Max

### **Parks & Recreation**

Graham, Rodney J.  
Harvey, Dean E.\*  
Jones, Pierre  
Mido, Kiyoka\*  
Taylor, Michael P.

### **Probation**

Bailey, Sofia  
Burgin, Robert L.\*  
Burris, Phyllis R.\*  
Carrigan, James M.\*  
Chavez, Theda  
Garcia, Robert\*  
Heard, Chester J.  
Kim, David C.  
Linebaugh, Donald C.\*  
Matsumune, Hisaye\*  
Mendoza, Samuel  
Pawlowski, Edward J.  
Valk, Richard C.  
Vickovic, Raymond R.\*  
Weiner, Louis H.\*

### **Public Defender**

James, Paul A.\*

### **Public Health Program**

Beserra, Helen  
Blair, Paul D.  
Morris, Benjamin  
Plotkin, Blanche  
Ward, Pearl J.

### **Public Library**

Kantor, Marjorie C.

### **Public Social Services**

Bryant, Josephine\*  
Burgess, Grace D.  
Davis, Donna Lee\*  
Drake, Albert L.  
Duenas, Jesus  
Fielder, Catherine L.  
Gordon, Celia  
Hernandez, Naomi  
Kelon, Bernardine L.  
Lewis, Erma K.  
Lindsey, Berta M.

Lyons, Betty J.\*  
Morcos, Enayat H.  
Newhouse, Alma G.\*  
Robinson, Jeanette P.  
Shuey, Patricia  
Smith, Marjorie A.\*  
Spencer, Katherine\*  
Tanaka, Eddy\*  
Taylor, Gertie W.\*  
Troost, Elizabeth C.  
Welsh, Bertha\*

### **Public Works**

Elliott, Barbara M.  
Hall, William A.  
Hellein, Walter R.  
Hoffmann, Peter L.\*  
Liljenwall, Thomas E.\*  
Melton, Timothy\*  
Rield, Robert K.\*  
Spears, Ernest R.  
Strahan, Richard R.  
Thomas, Claudette V.  
Williams, Bernarr  
Woods, Walter\*

### **Rancho Los Amigos Hospital**

Blanchard, William C.\*  
Christjaener, Donald C.\*  
De Bow, Helen\*  
Dean, Wendall P.  
Gonzales, Dolores  
Patterson, Mildred K.\*  
Wilson, Jacklyn A.

### **Reg.-Recorder/County Clerk**

Cowles, R. V.  
De Guzman, Alejandro A.  
Steverson, Clara A.\*

### **Road**

Jordan, John R.\*

### **Sheriff**

Allen, James H.  
Bailey, Deane P.\*  
Barnett, Hayword A.\*  
Bigos, Walter W.  
Carter, Anzella  
Chapple Jr., James W.  
Cook, Robert E.  
Cordova, Dorothy V.  
Dempsey, Dallas D.  
Ellsworth Jr., Donald E.\*

Estrada, Josephine  
Francis, Richard H.\*  
Ferguson, Jack T.\*  
Fleming, Terry J.\*  
Francis, Deane M.\*  
Gentry, Edwin  
Grier, James A.  
Griffin, Richard M.\*  
Johnson, Leroy K.\*  
Lamensdorf, Arthur\*  
Lee, George Y.  
Lopez, Hazel M.  
Matsunaga, Margaret K.  
Mc Smith, Newman F.  
Mealy, Lee R.\*  
Miller, Daniel E.  
Milton, Mary\*  
Rodriguez Jr., Miguel A.  
Serabia, Eugene L.  
Shearer, Robert E.  
Underdown, Stephen C.  
Welch, John C.  
Wilcox, Betty J.  
Williams, Henry S.

### **So. Coast Air Quality Mgmt.**

Deason, Morris V.\*

### **Superior Court/County Clerk**

Bancroft, Berdella A.\*  
Browder, Betty M.  
Cady, James  
Colon, Susie R.  
Dudley, Mary F.\*  
Hardy, Francis E.\*  
Luna, Sophie  
Melendez, Marie E.\*  
Shaw, Margaret J.\*

### **Supt. of Schools**

Barzar, Shirley A.

### **Treasurer & Tax Collector**

Flint, Linda L.  
Gale, Margaret E.\*  
Yensel, Richard F.

### **Women's Hospital**

Zahedi, Mahin\*

### **Department Not Designated**

Lull, Sylvia N.



RETIRED EMPLOYEES  
of LOS ANGELES COUNTY  
1000 South Fremont Ave. Unit 15  
Alhambra, CA 91803-8802

Return Service Requested

NON-PROFIT  
U.S. POSTAGE  
**PAID**  
PERMIT #66  
PASADENA, CA

# General Membership Meeting

Mary K. Rodriguez, Chair, Program Committee



**Tuesday, September 20, 2011**

Carson Community Center  
801 East Carson Street, Carson, CA 90745

9:00 a.m. – Complimentary Refreshments  
10:00 a.m. – Meeting Begins



**Presentation by the L.A. County Fire Department Community Services Division**  
**HOME SAFETY – FIRE, EMERGENCY MEDICAL, EARTHQUAKE AND WILDFIRE**  
**PREPAREDNESS, AVOIDING POST-DISASTER SCAMS AND FRAUD**

**Retiree Information from LACERA & RELAC**

## ~ DOOR PRIZES ~

Please bring your RELAC Membership Card

## IMPORTANT!

Are you moving?  
Did you change your name?

Cut out the address  
portion of this  
newsletter, correct it and  
mail to:

RELAC  
1000 S. Fremont Ave.,  
Unit 15 Alhambra, CA  
91803-8802 or

Phone:  
(800) 537-3522  
(626) 308-0532  
Fax: (626) 308-2901

Email:  
[admin@relac.org](mailto:admin@relac.org)

Website:  
[www.relac.org](http://www.relac.org)

Note: It is important that  
you mail this to RELAC or  
contact RELAC by phone  
as we DO NOT receive  
your address change  
from LACERA.



## DRIVING DIRECTIONS:

**Rte. I-405 South** to Carson St.,  
Exit 34. Turn left onto E Carson St.  
Go 0.3 mi. to 801 E Carson St.

**Rte. I-405 North** to Carson St.  
West Exit, Exit 34. Merge onto  
E Carson St. Go 0.3 mi. to 801 E  
Carson St.