

# RELAC newsletter

Over 50 Years of Dedicated Service to L.A. County Retirees

Jan/Feb 2009 Vol 44-1

*A Very Happy New Year from RELAC*

## President's Message

by Greg Walia

A new President! I guess RELAC didn't want to be left too far behind the country! The face you see here is the same old face (well, it's not that old) that you may have seen in the inside pages of the Newsletter for a few years now. Seriously though, I'm truly honored to have been elected by the RELAC Board of Directors as your President for 2009. Thank you.



Let me briefly share with you my background and then outline my goals for 2009. I began my County career in 1965 as a beginning level civil engineer with the old Road Department. My career path somehow got switched from engineering to personnel (Human Resources). After a five-year stint with the Chief Administrative Office as their Personnel Officer and Senior Budget Analyst, I joined the Public Works Department from where I retired in 2000 as Personnel Officer. In 2002, I joined RELAC and was appointed to its Board in 2003. I've had the pleasure of serving as Chair of Recreation and of Ad Hoc Benefits Study Committees and as Co-chair of the Program Committee in addition to serving on several other committees. So far, retirement has been a good journey with the support of my dear wife Judy, grandkids, golf, poker and good friends (not necessarily in that order!).

My primary goal of course will be to constantly remain vigilant in protecting your pension and health benefits. Additionally, and with the help of my esteemed colleagues on the Board, we will aggressively strive to increase membership, achieve greater fiscal and operational efficiency, and attempt to become even more responsive to our valued members. Please call us, drop us a line or send us an e-mail if you have any comments or suggestions about our programs and services. Your input is important and valuable. Our response will be prompt.

I would be remiss if I failed to thank my predecessor Ed Morris for his dedicated service to RELAC for the past three years and to my several colleagues on the Board and members on various committees for their cooperation and service on these committees. Our office staff deserves a special thank you for their hard work and commitment to provide best possible service to the RELAC family.

I wish you all the very best in 2009. Stay healthy and happy.

## There is Still Time to Reserve Your Place at the Annual Installation Luncheon

The featured speaker is LACERA CEO Gregg Rademacher, speaking on the impact of the financial crisis; the entertainment will be provided by the scintillating Transportation Security Authority Chorus; and, as usual, the food will be great. All is available to you at a bargain price. The reservation form is on page 3.

## Be Sure to Join in the Fun with RELAC in Las Vegas In March

There will be a gala luncheon with special prizes, the Las Vegas Split game and a delicious buffet. The featured speaker will be LACERA's Chief Investment Officer, Lisa Mazzocco. And there will be good deals on room rates. RELAC has also arranged for a golf tournament. The reservation forms are on page 5.

## Also Inside The Newsletter:

### Exciting Travel Opportunities

Information about a variety of interesting places for RELAC members to go with Great Western Tours will be found on page 11.

And you can discover China by traveling with China Discovery Tours. See what they offer on page 12.

**Benefits Offered to RELAC Members**  
Review the various benefits available to you on page 13.

## Retirement Board

by Bill de la Garza  
Your Elected Retirement Board Trustee



## RELAC Day At Santa Anita.... A Huge Success!!

by Greg Walia,  
Chair, Recreation Committee

Recession, gas prices, mortgage crisis, stock market doldrums....nothing could hold back RELAC's dedicated racing fans from having a ball at the 14th annual RELAC Day at Santa Anita Race Track on October 17, 2008. I mean there were 168 of them yelling and screaming right from the first post. (screaming and yelling was directed at their picks). Anyway, food was great...although there was some delay in bringing on seconds and third helpings. Yes, we were hungry!

As usual, a few traveled from some distances. Wilma Horan brought 13 of them from Bakersfield; Hotchkiss came from Avila Beach; Tweets from Rancho Santa Margarita; Allsops from Vista; Lees from Ventura; Ralphs from Dana Point; Villas from San Clemente; Travelees from Perris; Watsons and Mills from Palmdale and Pattersons from Lancaster. Tracey Deary who was a raffle winner at Santa Clarita General Membership meeting came from beautiful Granada Hills (I happen to live there also)! I so much appreciate all others who came from several nearby cities.

As your outgoing Chair of this Committee, I thank you for your splendid help and cooperation at this event for the past four years. A new Chairperson will take over the responsibilities of organizing this and Hollywood Park events in 2009. Rest assured you will be in very good hands.

May all of you have a very happy and healthy New Year.



RELAC members and guests enjoying a great view of the races at Santa Anita.

## Healthcare Still a Major Problem

I recently attended a CRCEA (California Retired County Employees Association) Executive Committee meeting for the purpose of planning activities and goals for 2009. The Executive Committee is made up of CRCEA Officers (President, Vice President, Secretary, Treasurer, etc.) An interesting item on the agenda was a request from a delegate representing Santa Barbara County asking the Executive Board to consider having CRCEA endorse and support a soon to be presented "California Single Payer Universal Health Care Plan" designed to provide health insurance for all Californians. It is my understanding the proposed plan is very similar to Single Payer Bill SB 840 which was authored by Senator Sheila Kuehl in February 2005. As you know, SB 840 was vetoed in September of 2006 by Governor Arnold Schwarzenegger who was quoted as saying "Socialized medicine is not the solution to our state's health care problems."

### Pros and Cons of Single Payer Plan

Kuehl's Bill had a great amount of support from large employee unions, Democratic party leaders and many elected officials. It had merit in that every Californian would be covered and no one would ever lose coverage for any reason. Many predicted that huge savings would result from removing insurance companies from health care and that provider and patient paperwork would be dramatically reduced. Those supporting the Bill stated that doctors and patients, not administrators, would make the medical decisions, hospitals would be afforded safe staffing levels for registered nurses and that primary and prevention care would be considered priorities.

Non-supporters of the Bill felt that the program would cost the state billions and lead to significant new taxes on individuals and businesses, without solving the critical issue of affordability. They went on to say that the proposed single payer, government-run program does not cure the claimed issues in that it would reduce a person's ability to choose his or her own physician, make people wait longer for treatment and raise the cost of the treatment.

### Important Questions Require Answers

There is still much to be studied and learned regarding universal health or health care reform. Some of the key elements of reform that need to be explored in 2009 include:

- Should there be a single national solution or a mix of public and private options?
- Should the program include incentive payments for providers rather than fixed or flat fees?
- Should individuals be allowed to purchase different levels of coverage?
- Should the government be investing in health IT (information technology) and technology infrastructure?
- Should there be more cost sharing on some types of care, for example, prescriptions?

**RELAC 2009**  
*Annual Installation Luncheon*  
**January 22, 2009**

All members, their spouses and guests are invited to RELAC's 2009 Annual Installation Luncheon, which will be held Thursday, January 22, 2009, at the Quiet Cannon Restaurant (Montebello Golf Course Clubhouse), 901 North Via San Clemente, Montebello, California. RELAC will subsidize 50% of meal costs for members and their spouses. Choices of entrees – either Beef or Chicken – with complete luncheon, tax and tip included in price.

*The Featured Speaker is Gregg Rademacher,*  
Chief Executive Officer, LACERA  
**Topic: Retiree Issues and Financial Crisis**

RELAC has the honor of presenting the **Transportation Security Authority Chorus** again this year due to popular demand. They were a hit last year and are back with their upbeat chorale renditions for you to enjoy prior to lunch. We will, again, have with us the **Los Angeles County Sheriff's Honor Guard** to present the colors.

Tickets must be purchased in advance and may be picked up in banquet room entry. No host cocktail hour 11:00 a.m.–12:00 p.m. Luncheon and Program 12:00 p.m.–3:00 p.m. Free Parking.  
Make new friends – Have a good time.

*Reservation Form*

Quiet Cannon Restaurant – January 22, 2009

Member \_\_\_\_\_

Spouse \_\_\_\_\_

Address \_\_\_\_\_

City \_\_\_\_\_ St. \_\_\_\_\_ Zip \_\_\_\_\_

Guest(s) \_\_\_\_\_

(Attach additional sheets, if necessary)

**A. ROAST BEEF**

Members/Spouse \_\_\_\_\_ \$ 10.00/each = \$ \_\_\_\_\_

Guest(s) \_\_\_\_\_ \$ 15.00/each = \$ \_\_\_\_\_

TOTAL \$ \_\_\_\_\_

**B. CHICKEN**

Members/Spouse \_\_\_\_\_ \$ 10.00/each = \$ \_\_\_\_\_

Guest(s) \_\_\_\_\_ \$ 15.00/each = \$ \_\_\_\_\_

TOTAL \$ \_\_\_\_\_

TOTAL ENCLOSED \$ \_\_\_\_\_

Make check/money order payable to "RELAC" and mail to:

RELAC  
1000 So. Fremont Ave., Unit 15  
Alhambra, CA 91803-8802  
NO LATER THAN JANUARY 9, 2009





## From the Membership Committee

by Marianne Reich  
Chair, Membership  
Recruitment Committee

Your Membership Committee has been actively recruiting new RELAC members at events attended by L. A. County retirees or those who may soon retire. These events included the Los Angeles County Management Conference held in Fallbrook. Ida Ramos and I had a great time telling the over 300 attendees about the benefits of joining our important organization. Greg Walia and Ida addressed the County's current departmental Human Resource Directors at their monthly meeting in October to enlist their help in getting the word out about RELAC to their employees as part of their retirement planning process. Ida also attended the Holiday reunion of employees of the former Department of Personnel. A great time was had by all and we welcomed eight new members during the luncheon event!

We need your help to recruit members for RELAC! Please contact County retirees and active County employees who have put off enrolling in RELAC and remind them of the key role RELAC plays in representing their interests before LACERA, the Board of Supervisors and the California State Legislature. Tell them how RELAC informs its members of essential matters – the maintenance and enhancement of our pension plan and health care coverage – two factors that give us peace of mind and the quality of life we earned.

If you know of an event being planned where retirees or those near retirement from LACERA are expected to attend, let us know -- we would like to be there! Remember, one does not have to be retired to join. We encourage any member of LACERA who is within three to five years from retirement to join and get in the know!

We will sponsor a contest for RELAC members who recruit new members in calendar year 2009! The real prize is sharing RELAC but other prizes will be presented to our top recruiting members. Keep your eyes open for details in the next issue of the newsletter and start looking around for potential recruits.



## Investments Board

by Diane Sandoval  
Retiree Representative,  
LACERA Board of Investments



Well, I'm happy to say that I survived the holidays, my daughter and her family's move from Madison, WI to Modesto, CA and I am hanging tough with the continued stock market volatility and the uncertainty of the financial markets. I had hoped that by the time I wrote this article the stock market would have leveled off and the state of the economy would have stabilized.

Unfortunately, that is not the case. I have always been honest with you and the one bright light I offer during these troubling times is that we should all be thankful we are retired under a Defined Benefit Plan. In a nutshell, we will receive our retirement checks in full regardless of whatever happens in the financial markets. How great is that?

Recently I attended a conference sponsored by the California Retired County Retirement Associations (CRCEA). CRCEA represents the 20 counties (Los Angeles County being one of the 20) that operate under the 1937 Retirement Act. Needless to say one of the issues discussed was the economy and the impact it's had on their retirement systems. One of the speakers opined that the bottom is close; let's hope he's right!

So once again I implore you not to worry about the Retirement Fund and its ability to continue to pay out your retirement benefits. Let's remain optimistic and enjoy our retirement. We all deserve that for the many years of service we provided to the citizens of Los Angeles County. As always thank you for your support.

## Lost Sweater Has Been Found

After the membership meeting at St. Sophia Cathedral on Tuesday, December 9 a sweater was turned in. The owner may claim it by calling the RELAC office at (800) 537-3522.



# REGIONAL ACTIVITIES

by Diane Sandoval  
Chair, Regional Support

## RELAC 2009 LAS VEGAS LUNCHEON MEETING THURSDAY, MARCH 19, 2009

RELAC Members, their spouses and guests are invited to attend our Luncheon Meeting being held at The Tuscany Suites & Casino, 255 E. Flamingo Road, Las Vegas, NV 89169 (just beyond Bally's and the Las Vegas strip). Enjoy a delicious three entrée buffet lunch for a cost of only \$20.00 per person.

The Featured Speaker is Liza Mazzocco,  
LACERA Chief Investment Officer  
Topic: Financial Crisis and Its Impact on the LACERA Fund

In addition to this timely presentation, there will be door prizes and our infamous game of chance wherein three attendees will reap the reward of bettors turned winners. If you are interested in attending, simply complete the reservation form below and send it to the RELAC office with your check payable to RELAC by March 13, 2009. Tickets must be purchased in advance and will be given out at the door.

### DO YOU PLAN ON STAYING AT THE TUSCANY?

RELAC has negotiated a great rate for anyone interested in staying at The Tuscany. The cost per guestroom is just \$75.00 plus applicable taxes (now 9%) per night Sunday through Thursday, single or double occupancy. If you extend your stay, the cost will be \$135.00 per guestroom (plus applicable taxes). Simply call The Tuscany Room Reservations at 877-887-2261 no later than February 16, 2009 5:00 P.M. and ask for RELAC group rates. Reservations received by the Tuscany after this date will be confirmed on a space available basis at the prevailing rate.

### LAS VEGAS LUNCHEON-MEETING March 19, 2009

THE TUSCANY SUITES & CASINO  
SOCIAL HOUR 11:30 AM~~ LUNCHEON 12:00 NOON  
Deadline is March 13, 2009

Name \_\_\_\_\_

Address \_\_\_\_\_

City \_\_\_\_\_ State \_\_\_\_\_ Zip \_\_\_\_\_

Guest(s) \_\_\_\_\_

(List Names)

# Tickets \_\_\_\_\_ x \$ 20.00 each = \$ \_\_\_\_\_

Sorry, I will be unable to attend the meeting but please send me information regarding RELAC

Mail coupon with your check payable to:

RELAC

1000 S. Fremont Ave., #15 - Alhambra, CA 91803-8802

(800) 537-3522 ~ ~ ~ (626) 308-0532

## RELAC LAS VEGAS GOLF TOURNAMENT

March 18, 2009

Starting at 12:00 (noon)



For all the golfers out there RELAC is once again planning to hold a Golf Tournament at the Wild Horse Golf Resort. The Resort is located at 2100 Warm Springs Road, Henderson, NV 89014. The golf fee is just \$75.00 per person including the cart. You don't need to attend the luncheon to play golf. If you are interested in playing golf simply fill out the registration form on this page and send it to the RELAC office with your check payable to RELAC by February 11, 2009.

Come join us, reconnect with your co-workers; make new friends!

### RELAC Golf Entry Form Las Vegas Invitational Wild Horse Golf Resort

2100 Warm Springs Road  
Henderson, NV 89014

Wednesday, March 18, 2009

Please Print

1. Name \_\_\_\_\_

Address \_\_\_\_\_

City \_\_\_\_\_ Zip \_\_\_\_\_

Phone \_\_\_\_\_

Fees: \$75.00 PER GOLFER - CART INCLUDED

If possible, place me in a foursome with below listed golfers. Addresses of all golfers MUST be included.  
If possible, we would prefer an

Early \_\_\_\_\_ Late \_\_\_\_\_ starting time.

2. Name \_\_\_\_\_

Address \_\_\_\_\_

City \_\_\_\_\_ Zip \_\_\_\_\_

Phone \_\_\_\_\_

3. Name \_\_\_\_\_

Address \_\_\_\_\_

City \_\_\_\_\_ Zip \_\_\_\_\_

Phone \_\_\_\_\_

4. Name \_\_\_\_\_

Address \_\_\_\_\_

City \_\_\_\_\_ Zip \_\_\_\_\_

Phone \_\_\_\_\_

NOTE: Only ONE GUEST per member.  
Enclose check for \_\_\_\_\_ golfers @ \$75 per Golfer.  
Make checks payable to RELAC Golf. Mail entry  
to RELAC GOLF, 1000 So. Fremont Ave., #15,  
Alhambra, CA 91803-8802

Entry Deadline: Feb 11, 2009

ALL CHECKS MUST BE IN RELAC OFFICE

For Office Use:

Date Rec. \_\_\_\_\_ Amt.\$ \_\_\_\_\_ Ck# \_\_\_\_\_

RELAC Members

# FREE Checking that Pays



# 4.00%

APY\*

**Southland**  
CREDIT UNION

There are only 3 free and easy requirements to qualify:

- 1 Use your Southland Check Card for at least 10 purchases per month
- 2 Make one ePay, or ACH credit or debit transaction per month from your **FREE SUPER CHECKING** Account
- 3 Receive Southland eStatements

Membership is subject to eligibility. All new accounts will be verified through ChexSystems and are subject to approval. \*APY=Annual Percentage Yield. Rate quoted 12-10-08 and is subject to change without notice. To qualify, accounts must have eStatements, 10 Check Card purchase transactions, and one ACH direct deposit, debit, or ePayment per month to earn qualifying rate and ATM refunds. Qualifying rate, currently 4.00% APY, will be paid on balances up to \$50,000. On balances over \$50,000 a lower dividend rate will be paid, currently .25% APY. Non-qualifying accounts will receive a .25% APY dividend rate and no ATM fee refunds will be paid. Reimbursed ATM fees include third-party surcharges and Southland out-of-network fees.



**Your Money is Secure.** Your deposits are insured up to at least \$500,000. The National Credit Union Administration (NCUA), an agency of the U.S. Government, insures your deposits up to \$250,000 (\$250,000 for IRA Accounts), AND any amount up to an additional \$250,000 is insured by American Share Insurance (ASI), a private insurance company contracted by the Credit Union to increase the safety of your funds.

**Downey**  
8545 Florence Ave.  
Downey, CA 90241

**Los Alamitos**  
10701 Los Alamitos Blvd.  
Los Alamitos, CA 90720

**Los Angeles**  
300 N. Los Angeles St.  
Los Angeles, CA 90012

[www.SouthlandCU.org](http://www.SouthlandCU.org) • 800.426.1917



## RELAC NEWSLETTER

Vol 44 - Jan/Feb 2009

Number 1

Retired Employees of  
Los Angeles County  
1000 S. Fremont Ave.  
Unit 15, Alhambra, CA  
91803-8802  
(626) 308-0532  
(800) 537-3522 Fax (626)  
308-2901  
E-mail: admin@relac.org

### Officers

President

**Greg Walia**

Vice President

**Ida Leon Ramos**

Secretary

**Mary Lou Bangar**

Treasurer/

Past President

**Edward C. Morris**

### Directors

**Bill de la Garza**

**Domingo Delgado**

**Sol Fingold**

**John F. Fleming**

**Martin Golds**

**Raymond R.**

**Guyovich**

**George Hernandez**

**Fred J. Miller**

**Marianne Reich**

**Mary K. Rodriguez**

**Diane Sandoval**

### Emeritus

**Dave E. Kalingar**

Editor: Martin Golds  
Copyright © 2009 by  
RELAC This information  
presented in your RELAC  
Newsletter is believed  
to be from reliable  
sources. However, no  
responsibility is assumed  
by RELAC or the writers  
for inaccuracies in the  
articles as published.

Office Hours  
9:00am - Noon &  
1:00pm - 4:00pm  
Monday - Thursday  
Friday: 9:00am - Noon  
Closed Saturday,  
Sunday &  
Public Holidays  
website: www.relac.org

## Golf News



### Diamond Bar Golf Course Golf Tournament 12-1-08

by Gil Sandoval  
RELAC Golf Director



Diamond Bar was tough for our members to play golf even though it turned out to be a beautiful day. Bob Bogawa won the "A" flight again at 69. Mike Haile had the best net of the day and won the "B" flight at net 63. Phil Sandoval playing steady won the "C" flight with a net 71. The Women's flight was a walk in the park for Jan Hadley as her net 65 outdistanced the rest of the field. A reminder, the Las Vegas Invitational will be on March 18, 2009 at the Wild Horse Golf Resort. Please check page 5 of this Newsletter for the entry form and more information.

#### Flight "A" (0-19 Handicaps)

|                  |       |
|------------------|-------|
| 1st Bob Bogawa   | (69)  |
| 2nd Gary Hartley | (71)* |
| 3rd Tom Hoagland | (71)  |

#### Flight "B" (20-27 Handicaps)

|                |       |
|----------------|-------|
| 1st Mike Haile | (63)  |
| 2nd Don DeBok  | (66)  |
| 3rd Ron Hansen | (69)* |

#### Flight "C" (28-38 Handicaps)

|                    |      |
|--------------------|------|
| 1st Phil Sandoval  | (71) |
| 2nd Larry Ferrster | (72) |
| 3rd Gus San Miguel | (75) |

#### Ladies "All"

|                   |       |
|-------------------|-------|
| 1st Jan Hadley    | (65)  |
| 2nd Sue Danbara   | (76)* |
| 3rd Nancy Singner | (76)  |

\* Won in card off.

#### Closest to the Pin on Par 3's

Men # 3 George Sims  
# 9 Ron Hansen  
# 13 Tom Hoagland  
# 17 Bob Bogawa

Women # 3 Nancy Singner

**TOURNAMENT** - Monday, Jan. 26, 2009  
Santa Anita Golf Course: 8:00 A.M. start  
Entry Deadline Jan. 11, 2009 - \$32.00

## RELAC Golf Entry Form

Santa Anita Golf Course  
405 S. Santa Anita Ave.  
Arcadia, CA 91006



**Monday, January 26, 2009**

Please Print

1. Name \_\_\_\_\_

Address \_\_\_\_\_

City \_\_\_\_\_ Zip \_\_\_\_\_

Phone \_\_\_\_\_

Fees: \$32.00 PER GOLFER - CART EXTRA

If possible, place me in a foursome with below listed golfers. Addresses of all golfers MUST be included.

If possible, we would prefer an  
Early \_\_\_\_\_ Late \_\_\_\_\_ starting time.

2. Name \_\_\_\_\_

Address \_\_\_\_\_

City \_\_\_\_\_ Zip \_\_\_\_\_

Phone \_\_\_\_\_

3. Name \_\_\_\_\_

Address \_\_\_\_\_

City \_\_\_\_\_ Zip \_\_\_\_\_

Phone \_\_\_\_\_

4. Name \_\_\_\_\_

Address \_\_\_\_\_

City \_\_\_\_\_ Zip \_\_\_\_\_

Phone \_\_\_\_\_

NOTE: Only ONE GUEST per member.  
Enclose check for \_\_\_\_\_ golfers @ \$32 per  
Golfer. Make checks payable to RELAC  
Golf. Mail entry to RELAC GOLF, 1000  
So. Fremont Ave., #15, Alhambra, CA  
91803-8802

**Entry Deadline**  
**January 11, 2009**  
**ALL CHECKS MUST BE**  
**IN RELAC OFFICE**

For Office Use:

Date Rec. \_\_\_\_\_ Amt.\$ \_\_\_\_\_ Ck# \_\_\_\_\_

# Members Spotlight



## Interesting Results of Survey for Speaking Topics

by Greg Walia, Co-chair, Program Committee

Here it is! - the survey results from membership meetings in 2008. (Cerritos, Santa Clarita and Los Angeles) as promised on page 4 of the November/December RELAC newsletter. We gathered this information to determine the topics you, our members, want presented by invited speakers at these meetings so they can be more meaningful for those who attend.

The topics you prefer are indicated below in priority order.

- |   |     |
|---|-----|
| 1. Health Related Issues (including prescription medicine): | 29% |
| 2. Credit Card Scams:                                       | 16% |
| 3. Fraudulent Schemes:                                      | 16% |
| 4. Wills and Trusts:  | 15% |
| 5. Satisfied as Is:   | 10% |
| 6. Annuities  | 08% |
| 7. Reverse Mortgages and Interest only home loans           | 06% |

(Some other topics suggested are: New Laws for Seniors; Long Term Insurance; Volunteering Opportunities; Social Security Benefits).

Thank you to those who actively participated in these surveys and please feel free to send us your comments/suggestions about our programs.

We look forward to seeing you at future meetings. Come enjoy meeting each other, listening to interesting speakers, complimentary refreshments and of course a chance to win one of our many door prizes.

Marianne Reich assisted in preparing this article.



At the Santa Anita Races, RELAC members, Evelyn Lee, who is 93 years old, with her daughter Kathy Smith.



Rancho Cucamonga Mayor Donald Kurth welcomes members to RELAC's Regional Meeting.



At the Rancho Cucamonga meeting Richard Kohr, Senior Driver Ombudsman with the California Department of Motor Vehicles, provided valuable information on driver licensing.



## LACERA CEO REPORT TO BOARD OF SUPERVISORS IS POSITIVE

On October 21, 2008 Gregg Rademacher, Chief Executive Officer of the Los Angeles County Employee Retirement System, assured the County's Board of Supervisors that LACERA is well funded. Notwithstanding losses resulting from the worldwide economic downturn, the system is able to meet its long term obligations to pay benefits to retirees. Although the value of the investment portfolio dropped 1.4% in the fiscal year ending July 30, 2008, its value increased substantially in previous years. In fiscal year 2007 the increase was 19.1%, and in 2006 the increase was 13.2%.

Rademacher acknowledged that it is within the realm of possibility that in fiscal year 2011, which begins July 1, 2010, actuarial requirements could require a substantial increase in the County's contribution to the retirement system. That would happen if the markets do not recover by June 30, 2009 and LACERA's asset value remains at the level it was at on September 30, 2008. If the current financial crisis persists for an extended period it is possible that the contribution of active employees would have to be increased. According to Rademacher there would be no impact on benefits paid to retirees.

Note: LACERA CEO Gregg Rademacher will be the featured speaker at RELAC's Annual Installation Luncheon to be held on January 22, 2009. See page 3 for details.

*Retirement cont. from p. 2*

At present, in reference to legislation, our country's critical national economic conditions overshadow any type of approval of universal health care including health care reforms.

After much discussion our CRCEA Executive Committee decided to take a watch position regarding the endorsement of a single payer universal health care program. This is not a cop-out on our part. We simply need more facts, specific information and a great amount of study before making a knowledgeable recommendation to our Board.

RELAC will continue to keep you informed on important issues regarding your pension and medical plans. Stay healthy, and enjoy your retirement. As customary, I leave you with this thought:

*"If you think health care is expensive now, wait until you see what it costs when it's free"*

*P. J. O'Rourke*

## RV Outing Notes



Janell Clifton & Ed Clifton  
Co-Coordinator of RV Club

In October we had a campout at Shadow Hills RV Park in Indio. The Reyes' Brothers and their wives were wagon masters. It was a little warm (hot even), but we still had a lot of fun. A business meeting followed the Tuesday morning breakfast. After our potluck dinner on Tuesday evening, Jesse Murph and Don Egbert won the gas cards provided by RELAC.

We had a great time at our Christmas Party at San Antonio Winery. Many gifts were brought for the Casa kids and presented to Sarah Campbell. Casa depends on us to help with their toy drive each year. It makes us feel good to know we help. We also had fun with our cut-throat gift exchange.

Don and Shirley Egbert will be wagon masters at Pechanga in Temecula. We will be enjoying ourselves on January 19 through 21. Our campers will take along any old dirt money that they find lying around the house and exchange it for a few minutes of fun in the Casino. We are sure a golf course, a winery, maybe a mall or two will be found and a lot of catching up on old and new news.

Coupon follows for campout at Mt. Valley RV in Hemet in April. Richard and Martha Wilkerson will be wagon masters. Monday evening will be shared hors d'oeuvres. Always remember your table service. Any questions or suggestions call us anytime at 562-428-3360.

### DATES FOR 2009 CAMPOUTS:

Pechanga - Jan. 19-20-21  
Mt. Valley - Hemet April 6-7-8  
Lake Elsinore - May 11-12-13  
Chula Vista - Sept. 21-22-23  
Emerald Desert - Oct. 19-20-21

### R.V. CAMPOUT RESERVATION

CAMPGROUND: MOUNTAIN VALLEY RV RESORT  
235 So. Lyons Avenue  
Hemet, CA. 92543

DATES: April 6, 7, 8, 2009

Names: \_\_\_\_\_  
(Last) (Retiree) (Spouse)

Address: \_\_\_\_\_  
(No.) (Street)

City: \_\_\_\_\_  
(State) (Zip)

Telephone: ( ) \_\_\_\_\_

### DEADLINE: Wednesday March 4, 2009

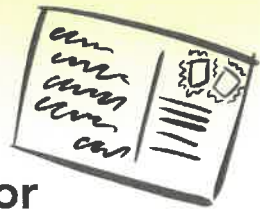
Make checks for \$84.00 payable to Richard Wilkerson and mail to:

Wagon Masters: Richard and Martha Wilkerson  
1610 Viola Pl.  
Pomona, CA 91768

Telephone: (909) 620-4773  
Additional nights through Resort Office \$27.00 per night.  
CALL IN ADVANCE 1-800-926-5593

Motor Home \_\_\_\_\_ Trailer \_\_\_\_\_ Length \_\_\_\_\_

## Letters To The Editor



Thank you for the birthday card for my father Raymond C. Honeycutt. He turned 95 years old on October 13. He had a long and happy life with many close friends at the Warehouse in Pacoima. Most, if not all, of his friends are gone now as he out-lived them all, but I remember how much he loved being a fireman and I was always proud of him for being a fireman and for having such wonderful friends there. My dad passed away October 2008. I took care of him at my home for 13 ½ years. I miss him so much. Thank you for everything.

Bobbie Foster  
Gilroy, CA

It was a surprise getting a card for my Birthday. I've had so many that I'm forgetting them. I do appreciate that you remembers me. I am 91 years old and writing is difficult. I retired from the Mechanical Department and the Rancho Los Amigos in 1968. Bob Sudduth hired me and he later became the Director of the Mechanical Department. He is still with us, a few years older.

Joe Venaglia  
Norwalk, CA

Thank you can hardly cover what you do for all us retired folks; your continued work to improve our lives and help in keeping what you have worked for. The picnic was great and wonderful gifts. I don't know how I managed before receiving your pocket secretary. It already has several Dr. Appts. A big thank you again. P.S. Thank you for pictures of new L.A.Co. U.S.C. Medical Center. I worked 30 years in old building.

Loraine A. Harris  
Cudahy, CA 90201

2009 Pocket Secretary arrived!! Thanks.  
Waldo E. Henderson  
Compton, CA

*RELAC thanks you, Waldo, for generously continuing to pay dues although you are over eighty.*

Every year I intend to send a thank you for the great Pocket Secretary. We have become so used to having it, but do not want to take it for granted! We keep it by the phone – it is small but shows the full month, and best of all, it is made with the kind of paper that you can write on with pencil, making it easy to make changes? Thank you, it is a welcome gift we look forward to getting.

Pat & Bob Jordan  
Cardiff, CA

Dear Peggy: Thank you for the lovely birthday card. It's nice to be remembered at 93! But I hope to see many more. And thanks again to RELAC for all you're wonderful advantages.

Evelyn Lee  
Ventura, CA

This is the first year I have not received my 2009 Pocket Secretary to date. Maybe it's lost in the mail? If you could send one to me I would appreciate it. I will be 80 years old next month and have been using the Pocket Secretary for many a year. Thanks again.

Barbara M. Zemke  
Fort Mohave, AZ

*It appears, Barbara, that your Pocket Secretary was lost in the mail. Another one has been sent to you.*

## For Sale

**ETERNAL VALLEY**, Newhall, CA. Three side-by-side cemetery plots. Next to the road in the Garden of Peace. \$2,000 each plus transfer fee. Phone: 760-945-0498

**THE FOUR SEASONS HOTEL & SPA.** San Diego Residence Club Aviara. For sale. \$30,000 total cost for 2 weeks EVERY year. Deeded Property. Approximately 1,330 square feet; 1 bedroom villa with 2 bathrooms; fully equipped kitchen; dining room; balcony; flat screen TV's - THE WORKS. Imagine staying at The Four Seasons Residence Club, a 5 Star property every year you pick your weeks. ONLY \$30,000 Interested? Call Chuck 805-241-1910

**MAUI, HAWAII** - Ka'anapali Beach Club for sale. One bedroom ocean unit. Yours for life at \$25,000 total cost 1 week every odd year. Deeded Property. Beautiful appointments throughout room. Bedroom includes entertainment center, desk with high speed internet access. Bathroom includes his and her vanity with vanity bench for the ladies. Separate shower and tub; individual water closet. Also one bedroom offers separate bedroom and living room. Living room offers a pull-out sofa with entertainment center, video on demand and stereo system, coffee table and lounge chairs. Dining room set that sits four. Kitchen with nook, ocean view lanai to include lounge chair and two captain chairs with mini-table. ONLY \$25,000. Call Chuck at 805-241-1910.



# Touring With Great Western

626-578-1161 • 800-344-7090

Don't forget to ask for your RELAC discount!

CST# 1016229-40



## FROM EAST TOWEST VIA Rail Trans-Canada Rockies Rail Journey



Departs May 21, 2009

Jet to Toronto - Rail 3 Nights to Jasper

\* Columbia Glacier \* Chateau Lake \* Banff \* Calgary

7-Day Air/Rail/Motorcoach Tour

### TOUR PRICE INCLUDES:

- Roundtrip Air Fare - Via Air Canada
- Two Nights Aboard VIA Rail's "The Canadian," Silver & Blue Class Service With Sleeping car Two Types of Accommodations-Bedroom for two upper/lower or Roomette Single/Lower - Both have facilities
- Three Nights Hotel Accommodations
- 14 Meals: 6 Breakfasts, 4 Lunches & 4 Dinners
- Sightseeing & Admissions Per Itinerary
- Deluxe Motorcoach Transportation
- Baggage Handling - 1 Large Case Per Person
- Taxes On Included Features

Double Per Person: \$2795.00 Single: \$2995.00

## Black Hills of South Dakota

Mt. Rushmore • Deadwood • Crazy Horse Memorial

High Plains Western Heritage Center

Custer State Park • Tate Geological Museum

9-Day Land Tour

Departs

May 23, 2009



Deluxe Motorcoach Transportation

14 Meals: 8 Breakfasts, 6 Dinners

• 8 Nights Hotel Accommodations

Admissions and Sightseeing per Itinerary

Professional Tour Manager Throughout

• Taxes and Baggage Handling

Double Per Person: \$999.00 Single: \$1299.00

Checks only - Credit Cards - add 3%



## TRANS-CANADA

Departs May 26, 2009

5 Day Air/Rail/Motorcoach Tour



### TOUR PRICE INCLUDES:

- Roundtrip Air LAX/ Toronto - Vancouver/LAX
- Four nights aboard VIA Rail's "The Canadian" Silver & Blue Class Service With Sleeping car Two Types of Accommodations-Bedroom for two upper/lower or Roomette Single/Lower

Both have facilities • 11 Meals • City tour of \* Toronto \*

Vancouver • Tax and baggage handling - 1 large case per person

SINGLE OR DOUBLE BEDROOM: \$2395.00



## Pacific Coast

Alaskan Spring  
Rail-Sail-Jet

8-Day Rail/Cruise/Air Tour

Seattle i Vancouver

Cruise Inside Passage i Ketchikan

Departs May 2, 2009

Cruise and Amtrak Roomette Bedroom

| Category | Stateroom               | Double Per Person |
|----------|-------------------------|-------------------|
| II       | Inside                  | \$1609.00         |
| E        | Ocean View (Obstructed) | \$1689.00         |
| BC       | Balcony                 | \$1759.00         |

Cruise and Amtrak Bedroom

| Category | Stateroom               | Double Per Person |
|----------|-------------------------|-------------------|
| II       | Inside                  | \$1919.00         |
| E        | Ocean View (Obstructed) | \$1999.00         |
| BC       | Balcony                 | \$2069.00         |

## Alaska's Inside Passage



Sitka, Hubbard Glacier, Juneau, Ketchikan

Featuring a 7 Night Cruise Aboard the Celebrity's Mercury

Departs

Trip Includes

August 30, 2009 • All Meals & Entertainment Aboard Ship

• Port Charges and Government Fees of \$393.00

| Cabin Categories | Double            | All Transfers |
|------------------|-------------------|---------------|
| Category 2A      | Veranda \$2599.00 |               |
| Category 5       | Outside \$2099.00 |               |
| Category 7       | Outside \$2019.00 |               |
| Category 9       | Inside \$1919.00  |               |
| Category 11      | Inside \$1899.00  |               |





## Welcome New Members



OCTOBER & NOVEMBER 2008

**Auditor-Controller**  
McFarland, Fred

**Child Support Services**  
Bickmore, Beverlee

**Children & Family Services**  
Azadian, Mariam

**Community & Senior Services**  
Kelly, Andrea

**District Attorney**  
Jimenez, Maria J.  
McCord, Angela

**Health Services**  
Chaney, Agnes J.

**Human Resources**  
Waterhouse, Authra

**Mental Health**  
Labrada, Nidia E  
Labrada, Nury M.  
Perez, Candida

**Probation**  
Schweitzer, Melvin

**Public Defender**  
Kaplan, Steven E

**Public Health**  
McCann, Louise

**Public Social Services**  
Premsrirath, Tharinee

**Public Works**  
Baracchini, Dominic

Chavez, Steve  
Tajalli, Tony H

**Sheriff**  
Klauk, Jeanne F.  
Ray, Sharman S.

**Dept Not Designated**  
Barrera, Ernest

**Affiliate Members**  
(Active County Employees)

**Alternate Public Defender**  
Barcenas, Ernestina M.

**Auditor-Controller**  
Nelson, Dianne

**Chief Executive Office**  
Fiore, Denise  
Regan, Kathryn E.

**Children & Family Services**  
Oliver, Catherine

**LACERA**  
Ptacek, Valery

**Public Defender**  
Welch, Lorraine

**Public Health**  
Prado-Galvan, Lupe  
Stroupe, Attricia

**Treasurer/Tax Collector**  
Roman, Henry



**CHINA  
DISCOVERY  
TOURS**

## Travel To China Next Spring With RELAC

*"It was an amazing tour and an incredible value."*  
– Josephine Starr (5/23/08 RELAC Tour)

- This incredible \*10 day/7 night tour starts from Los Angeles (also San Francisco or New York) on **May 8, 2009**.
- Next presentation/planning meeting is Saturday, January 24, 2009. Call Jeff to reserve your seat.
- All-inclusive – Beijing, Xian, Shanghai, & Suzhou – all flights, hotels, meals, professional English speaking guides, ground transportation, transfers, sites, and entertainment tickets ^ (airport tax, China visa, & insurance are separate).
- **Call Jeff for a FREE 2009 tours catalog!**
- Tour Presentation Online:  
<http://www.chinadiscoverytours.com/sp-relac/index.html>

\*Including international travel dates.



### Contact Jeff Adkins

TF: 866-992-4462 x. 117 D: 310-802-7117  
[www.chinadiscoverytours.com](http://www.chinadiscoverytours.com)  
[jeff@chinadiscoverytours.com](mailto:jeff@chinadiscoverytours.com)  
20407 Hawthorne Blvd., Torrance, CA 90503

**China Discovery Tours**  
Asia travel specialist for  
over 20 years



CASOT#1021060-10

# BENEFITS AVAILABLE TO RELAC MEMBERS

in addition to the \$1,000 of AD&D Insurance paid by RELAC.



## PERSONAL ACCIDENT COVERAGE WITH SECURE TRAVEL PROTECTION

**Monthly Premiums Start at 49¢**

This comprehensive coverage can protect both you and your family against loss due to accidents. Coverage available up to \$300,000. Additional Benefits included for rehabilitation, counseling, college education, home modification, child care expenses, and much more.

**Benefits included in Secure Travel Protection: Your Passport to Security and Peace of Mind When You Travel:**

- ◆ Translation & Interpretation Services
- ◆ Emergency Cash Advances
- ◆ Prescription Refill Assistance
- ◆ Pre-Departure Services
- ◆ Lost or Stolen Item Assistance
- ◆ Legal Assistance
- ◆ Emergency Message Relays
- ◆ Medical & Dental Referrals
- ◆ Medical Evacuation
- ◆ Repatriation
- ◆ Bail Bond Posting
- ◆ 24 Hour Availability

## DELTA DENTAL SUPPLEMENTAL INSURANCE

**Member Monthly Premium: \$36**

**Member & Spouse Monthly Premium \$66**



Many members are finding out that their current insurance is not enough to cover their dental needs. This dental plan supplements your current insurance with an extra \$1,000 calendar year benefit. Best of all, there are **No Waiting Periods** for any covered procedure! Coverage includes:

- ◆ Implants
- ◆ X-Rays
- ◆ Crowns
- ◆ Cleanings
- ◆ Dentures
- ◆ Oral Exams
- ◆ Inlays
- ◆ Onlays
- ◆ Root Canals
- ◆ Extractions
- ◆ Resin Fillings
- ◆ Amalgam Fillings
- ◆ See ANY Dentist Worldwide
- ◆ No Waiting Periods!
- ◆ Spouse Coverage Available



## PRE-PAID LEGAL SERVICES

**Member & Family Monthly Premium \$15.95**

**Benefits Include:**

- ◆ 24/7 access to attorneys for legal consultation and advice
- ◆ Wills and living wills preparation with annual updates
- ◆ Letters and phone calls generated on your behalf
- ◆ Contract and document review up to 10 pages
- ◆ Motor vehicle legal services for moving violations
- ◆ IRS Audit legal services ◆ Trial defense services



For more information on these plans please, mail this form to:

Member Name: \_\_\_\_\_

Address: \_\_\_\_\_

City: \_\_\_\_\_ State: \_\_\_\_\_ Zip: \_\_\_\_\_

Tel: (\_\_\_\_\_) \_\_\_\_\_ - \_\_\_\_\_

Pacific Group Agencies, Inc.  
25876 The Old Road, #11  
Santa Clarita, CA 91381

OR

Tel: (800) 511-9065

Fax: (800) 549-0059

E-mail: RELAC@pgagencies.com

CA Lic. #0078489



## IN MEMORIAM

*This list includes retired employees, both RELAC members and non-members.*

*\* denotes RELAC members*

### **Agricultural Comm/Wts & M**

Cho, Johnathan C.

### **Assessor**

Callahan, Gerald M\*

### **Child Support Services**

Ethnasios, Aziz A.\*

### **Children's Services**

Bell, Richard A.

Davidson, Jo E.

Gerlach, Sonya\*

Pruitt, Andrea

Ramos, Alicia V.\*

Reimert, Jo A.\*

### **County Clerk**

Shyles, Bernice G.\*

### **County Counsel**

Butler, Charlene

### **Data Processing**

Solace, Cheston V.\*

### **District Attorney**

Knoke, George J.

Lamb, Ken E.

### **Engineer**

Speechly, George\*

### **Fire**

Crisp, Layne\*

Honeycutt, Raymond C.\*

Reeder, Grover E.\*

Wright, Jay D.\*

### **Harbor/UCLA Medical Center**

Clemons, Martha A.

Flores, Romeo\*

Iizaki, Eiko

### **Health Services**

Gallagher, Betty R.\*

### **Hospitals**

Gammons, Beatrice B.\*

### **Internal Services**

Clark, Bobbie J.\*

### **LAC + USC Medical Center**

Brouckaert, Adolph M.\*

Griffin, Annie L.

Marsh, Hazel L.\*

Mulkey, Larkin\*

Scoggins, Novella\*

### **Long Beach General Hospital**

Timmerman, Thomas E.\*

### **Mechanical**

Hopper, Bessler\*

Pisa, Samuel L.\*

### **Medical Examiner-Coroner**

Kornblum, Ronald N.

### **Medical Support Services**

Najera, Luis D.

### **Mental Health**

Corral, Hortencia

Monleon, Violeta A

### **Municipal Court**

Kent, Dorothy\* (Culver)

Nielsen, Virginia (Los Angeles)

Segerman, Sorrel M.\* (Los Angeles)

Simmons, Anne K.\* (South Bay)

### **Olive View Hospital**

Petersen, Patricia\*

### **Parks & Recreation**

Donada, Martha E.

Sefe, Luapo T.\*

### **Plant Management**

Nickerson, Rosie L.

### **Probation**

Coleman, Mary A.

Daniels, Roy W.\*

Jones, Robert W.\*

Moore, Frank M.

Phillips, Barbara S.

Swanson, Eve M.

### **Psychiatric Hospital**

Sauls, Louise R.\*

### **Public Defender**

Cano, Ralph R.

### **Public Health Program**

Brouse, Dale S.\*

Guerra, Manuel J.\*

Peck, Thomas\*

Ruvalcaba, Angelina

### **Public Library**

Greenbaum, Marilyn

Zoretich, Josephine T.\*

### **Public Social Services**

Abbott, Maudie L.

Bowles, Iona M.

Burkhardt, Inez V.\*

Cameron, Lois\*

Daniels, Helen

Glascok, Joan M.\*

Horne, Margaret E.\*

Jensen, George W.

Lamont, Audrey

Maiden, Hiawatha

Perle, Walter S.

Thayer, Esther B.\*

Thomas, Mary D.\*

Tran, Lap B.

### **Public Works**

Smith Jr., Willie W.

Wansley, James J.

### **Purchasing & Stores**

Brown, Helene S.\*

### **Rancho Los Amigos Hospital**

Mc Kown, Nancy B.\*

Pulley, Lewis W.

### **Parks & Recreation**

Johnson, Albert A.\*

### **Road**

Hokanson, Donald L.\*

Pechar, Charles A.\*

### **Sheriff**

Baumeister, Julian C.\*

Bristow, Allen P.

Deiro, Martin C.\*

Griffin, Mary W.

Judd, Irwin P.\*

Kang, Youn S.

Manok, John A.\*

Monfort, Linda L.\*

Nagaoka, Michael M.

Shine, Stephen R.\*

Snelson, Margaret J.

Welker, Robert A.

### **Superintendent of Schools**

Harvey, Norma L.\*

### **Superior Court/Court/Co Clerk**

Freeman, June P.

### **Superior Court Reporters**

Scavarda, Georgia M\*

### **Department Not Designated**

Almassy, Jane S.

Amstutz, Lela M.

Berman, Jeanne

Bucciari, John P.

Cato, Ola

Colucci, Domenica

Edwards, Millard H.

Gonzalez, Elizabeth M.

Howell, Meg L.

Ostrin, Benjamin B.

Pasco, Edward B.

Rockford, Leo R

Scherr, Herman.

Skelly, Dion M.

Spight, Odessa B.

Tindall, Glenice B.

Williams, James H.

Wood, Robert B.



## News From LACERA

by Janice Golden  
Assistant Executive Officer

Happy New Year to Retired Employees of Los Angeles County. Let's start the New Year with a quick review of some key information regarding your LACERA retirement.

### PAYDAYS

LACERA retirees are paid on the last business day of the month. This can be an adjustment for active members who are transitioning into retirement. As active County employees, we are used to being paid twice a month (if on direct deposit) on the 15th and the 30th. However, as a retiree, you will receive your retirement allowance once a month -- on the last business day. Look for the LACERA Payday Calendar on [lacera.com](http://lacera.com), under Benefits, Retired Members.

### 1099-R FORMS

If you're getting ready to file your taxes, 1099-R forms will be sent to retirees by January 31, 2009.

### TAX WITHHOLDING FORMS

The new year is an opportune time to review your tax withholding amounts. Do you need to make changes to fit your tax needs? If you'd like to make changes, you may call LACERA at 1-800-786-6464 and request that a tax form be mailed to you -- or you can access the tax form on [lacera.com](http://lacera.com), on the Brochures & Forms page. This form is interactive, so you can complete it on line, then print, sign, and mail it to LACERA so we can process your changes.

### ADDRESS UPDATES

Please let LACERA know immediately if you move so we can get your check or Automatic Deposit Receipt (ADR) to your new location in a timely manner. It is not enough to contact the Post Office regarding an address change. LACERA retirement checks and ADRs are NOT forwarded by the Post Office to members; instead these items are returned to LACERA so we can follow up and ensure that we have the correct payee information. To avoid delays in payments, it is very important that members keep LACERA informed of their current address.

I sincerely hope that 2009 brings you all good health and much happiness. As always, please give us a call at 1-800-786-6464 or email us at [welcomel@lacera.com](mailto:welcomel@lacera.com) if you have any questions or concerns



### Waiver of Dues for Members over 80 Eliminated

In accordance with an amendment to the RELAC By-laws adopted at a General Membership Meeting on March 11, 2008, dues may no longer be waived for members and associate members over 80 years of age. Regular and associate members currently receiving the exemption will continue to have their dues waived.



### Large Turnout at the Holiday Membership Meeting at Saint Sophia Cathedral

It was a full house at the Saint Sophia Greek Orthodox Cathedral on December 9 for the traditional RELAC Holiday General Membership Party.

While enjoying their complimentary coffee and doughnuts, the members in attendance were entertained by the excellent Christmas Carolers from Citrus College. In the course of the party all those present were led in singing songs of the season by RELAC Board member Domingo Delgado. A highlight was a rousing recitation of the Night Before Christmas by member Rachelle McMurray. Another highlight was the introduction of Lucille Robinson who is celebrating her one hundredth birthday.

Bill de la Garza, the retiree representative on the LACERA Board of Retirement, assured the audience that RELAC will continue to fight to protect their Medical Plans in this period of economic retrenchment. The retiree representative on the LACERA Board of Investments, Diane Sandoval, reported that the retirement fund has been hit by the down markets, but gave assurance that the fund has the strength to weather the storm.

The climax of the meeting was the drawing for a large number and variety of door prizes.

# General Membership Meeting

Greg Walia & Fred Miller, Co Chairs, Program Committee



**Tuesday, March 10, 2009**

Ayres Hall

Los Angeles County Arboretum  
301 North Baldwin Ave., Arcadia, CA 91007



~ DOOR PRIZES ~

9:15 a.m. – FREE Coffee and Donuts

10:00 a.m. – Meeting Begins

**Featured Speaker: Dr. Dawn Terashita**  
**Medical Epidemiologist**

Acute Communicable Disease Control  
Los Angeles County Department of Public Health

**TOPIC: Healthcare Acquired Infection**  
How Treatment May Make You sick

Retiree Information from LACERA & RELAC  
You will need your RELAC Membership Card.

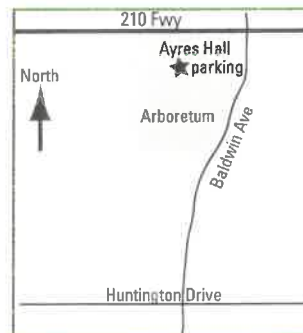
At the end of the program members are welcome to tour the  
Arboretum at no cost.

A tour tram is available at a small cost. There is a cafeteria.

## Driving Directions:

From Rte. 210 Fwy.  
Going either eastbound  
or westbound, exit at  
Baldwin Avenue.  
Proceed South on  
Baldwin Avenue ¼ mile.  
Turn right into the first  
driveway and park  
in front of Ayres Hall.

From Huntington Drive  
go North on Baldwin  
Avenue 1 ¼ miles. Turn  
left at the traffic signal  
and enter the parking  
lot. Ayers Hall is  
located just off the  
Northerly portion of the  
lot.



## IMPORTANT!

Are you moving?  
Did you change your  
name?

Cut out the address  
portion of this  
newsletter, correct it  
and mail to:

RELAC

1000 S. Fremont Ave.,  
Unit 15 Alhambra, CA  
91803-8802 or

Phone:

(800) 537-3522

(626) 308-0532

Fax: (626) 308-2901

Email:

admin@relac.org

website:

www.relac.org

Note: It is important  
that you mail this to  
RELAC or contact  
RELAC by phone  
as we DO NOT  
receive your address  
change from  
LACERA.



RETIRED EMPLOYEES  
of LOS ANGELES COUNTY  
1000 South Fremont Ave. Unit 15  
Alhambra, CA 91803-8802

Return Service Requested

NON-PROFIT  
U.S. POSTAGE  
**PAID**  
PERMIT #66  
PASADENA, CA