

## President's Message

By Diane Sandoval



Much has happened since our last issue of our newsletter. At the December Business Meeting I was again elected RELAC President and look forward to working with the Board this coming year.

At the LACERA Board of Retirement meeting on January 12, 2005, Ed Morris was appointed to the position of Alternate Retired Member.

This appointment is important because our retiree representative, Bill de la Garza, now has Ed to attend Board Meetings in his absence.

I would like to thank the LACERA Board of Retirement for appointing Ed Morris as its 1st Alternate Retired Member. Thank you, Ed, for taking on this awesome responsibility.

### ANNUAL INSTALLATION AND AWARDS LUNCHEON

On January 14, 2005 RELAC held its Eleventh Annual Installation and Awards Luncheon at the Quiet Cannon Restaurant in Montebello. Mr. Mark Saladino, Los Angeles County Treasurer and Tax Collector, installed the RELAC officers and newly elected Board Members.

Mr. Saladino, our featured speaker at the luncheon, spoke about a proposal, Assembly Constitutional Amendment 5 (ACA 5), introduced by Assemblyman Richman, that would end all Defined Benefit Plans and replace them with Defined Contribution Plans for public employees who are hired after July 1, 2007. Governor Schwarzenegger supports this constitutional amendment. The Governor and Assemblyman Richman believe the demise of Defined Benefit Plans will reduce pension costs for state and local governments. Unfortunately, the opposite is true.

RELAC has joined the California Retired County Employees Association (CRCEA) in voicing its opposition of ACA 5. (CRCEA is a non-profit association that is comprised of 19 other county retirement associations operating under the 1937 Act.) With CRCEA as our ally we are 160,000 members strong. As we've said before, our strength is in our numbers and our power is at the polls. Now more than ever, RELAC needs your help in building our membership. Contact co-workers who have retired and are not RELAC members. Applications may be obtained by calling the RELAC office.

**Morris appointed Alternate Retiree  
 Member of Retirement Board**  
 See Retirement Board Report, page 2

## COUNTY TREASURER WARNS AGAINST PROPOSED CHANGE IN RETIREMENT PLANS

L. A. County Treasurer/Tax Collector Mark Saladino, the featured speaker at RELAC's annual Installation and Awards Luncheon, described the drawbacks and risks if the State of California should adopt the proposal to replace all existing public employee defined benefit plans with defined contribution plans. The latter would be very much like 401K plans. If approved by the legislature, the proposed change, a Constitutional Amendment, would then be submitted to the voters. If the legislature rejects the proposal, it may be placed before the voters through the initiative process.

Saladino, who is an ex officio member the County Retirement and Investment Boards, warned the luncheon audience of 400 that pending legislation could have significant consequences for already retired members of LACERA even though only new County employees hired after July 1, 2007 would be enrolled in the new plan. The employer and employee contributions to the defined contribution plans would go into the separate accounts of the



L.A. County Treasurer & Tax Collector Mark Saladino speaking at RELAC's Annual Installation Luncheon (photo by Sol Fingold)

continued on p.15

## Retirement Board

By Bill de la Garza

You're Elected Retirement Board Trustee



### Passage of Alternate Item and Appointment of Edward C. Morris

Dear Friends,

Thursday, January 13 was a great day for RELAC and all retired employees of Los Angeles County. The LACERA Board of Retirement not only approved a motion to add an Alternate Retired member to the Board of Retirement, but also appointed RELAC'S current Vice President/Treasurer Edward C. Morris to the position of Alternate Retired Member. Ed's appointment marks an end to a lengthy process that included the development and passage of statewide legislation, a legal opinion from the State Attorney General and the approval of the LACERA Board of Retirement. RELAC would like to thank our statewide partner CRCEA (California Retired County Employees Association) for their role in developing the needed legislation. We would also like to acknowledge and thank the LACERA Board of Retirement for recognizing the need and their final approval of the Retired Alternate item.

### Major Achievement for RELAC

The addition of an Alternate Retired member represents a major victory for RELAC and its membership because if the Regular Elected Board Member is unable to attend a meeting due to death, illness, vacation or any other reason, the Alternate Retired Members will be present at the Retirement Board meetings to represent the retirees on all issues, especially those that affect retirees. Simply stated, "We will always be represented". You might recall several years ago when Retirement Board member Bob Stotelmeyer passed away, retirees were not represented on the LACERA Retirement Board for over 12 months. The addition of the Alternate Retiree item eliminates this possibility.

In the future the Alternate Board Member will be elected for a three year term at the same time as the Regular Board Member by the retirees of Los Angeles County. Both Bill de la Garza, the regular LACERA Retirement Board member and Ed Morris, the Alternate Board member are also active RELAC Board members. They are committed to work together as a "team" to insure that the interests of all County retirees will always be represented at the LACERA Board of Retirement meetings.

### Proposed Change in Retirement Plans

As your Retirement Board representative, I strongly recommend and urge you to carefully read the two articles in this newsletter entitled RELAC Board Opposes Retirement Plan Change and County Treasurer Warns Against proposed Change of Retirement Plans on pages 11 and 1. I consider this issue regarding the proposed changes to our retirement plans one of the most important issues we have ever faced. We will need to utilize our full resources on this one. Continuing information will follow in future newsletters.

Until next time and as customary, I leave you with this thought:

*"I'm proud to pay taxes in the United States; the only thing is, I could be just as proud for half the money."*

Arthur Godfrey

## RELAC Joins L.A. County Tsunami Relief Program

In response to many phone calls and inquiries from RELAC members desiring to participate and contribute to a recognized Tsunami victim's relief program, your RELAC Board of Directors voted unanimously to join forces with L.A. County to support their Aid to Tsunami Victims program.

The Los Angeles County Board of Supervisors have asked all active County employees to voluntarily contribute to this much needed program which will provide aid to tsunami victims in India, Indonesia, Sri Lanka and Thailand. Los Angeles County has openly welcomed support from their retirees who would like to voluntarily participate in the program.

Please understand that this solicitation is voluntary. Being a County relief effort gives Aid to Tsunami Victims program credibility and we know that the contribution will be used for its intended purpose. It's not too late as the relief program is ongoing

RELAC and the County of Los Angeles thank you for your compassion and generosity.

#### MAIL TO:

Los Angeles County  
CAO Workplace Programs Office  
Aid to Tsunami Victims Program  
500 West Temple Street,  
Room B-1  
Los Angeles, CA 90012

#### FROM: RELAC Member:

(Name)

#### DONATION:

Please make check payable to:  
L.A. County Volunteer Fund  
and please write "Tsunami Relief"  
on the memo line.





# WW II Veterans

## LARRY BRADEMAYER, SR.

The kids I grew up with were all products of the Great Depression. I was one of thirteen (13) children from a Dakota farm family. I saw WW2 as a chance to serve my country and escape poverty. I quit high school and joined the Merchant Marine in 1943. After doing boot camp on Catalina Island, my first voyage was from Bremerton, WA. to Pearl Harbor with cargo of munitions. On subsequent trips I traveled on tankers carrying air-Guadalcanal, Talagi, Caledonia as well as Wellington, New age we took plane Guam. We formed and saw action off the Japanese planes at- Never was I as proud Navy Destroyers and were in Calcutta, In-Roosevelt died and Ocean enroute from Colombo, Ceylon (Sri Lanka) to Mombassa, Kenya when we heard Germany had surrendered. On that voyage around the world we almost lost our ship in a hurricane off the coast of Cape Town. We hadn't had time to stow our lines before it struck and lost all the lines off the stern. As a result we needed help from the Coast Guard when docking in New York. The day Japan surrendered my future wife and I were aboard the Red Car Trolley going from Long Beach to LA, when passing the Dominguez station we heard people shouting the news. LA was such a mob scene that we ducked into the old Orpheum theater to get out of the chaos. Two days later my ship left for Manila and it seemed surreal to be at sea with the running lights turned on after years of being blacked out. I continued to go to sea for three more years after the war ended. When I finished my sea going career I had been on every continent except the Antarctic. I too wish to offer praise and pride for each one of our service men and women... wherever they are serving.



plane fuel to New Hebrides, New Auckland and Zealand. On one voy-fuel to Ulithi and convoy in Enowetok island of Truk when tacked out convoy. as I was to see those Escorts in action. We dia when President was in the Indian

## ATTENTION ALL WWII VETERANS

by Ray Guyovich

The American Battle Monuments Commission encourages members of the WWII generation to enroll in the Registry. Any American who served in the Armed Forces and anyone Who contributed to the war effort on the home front, in defense factories, shipyards, on farms or in neighborhoods, please register. It's free. If you wish to add a photo to the Registry there is a \$10.00 charge. You may enroll by telephone or on the internet as indicated below:

Telephone: 1-800-639-4992  
Internet: [www.wwII memorial.com](http://www.wwII memorial.com)  
View the Memorial at the website.

## Board of Directors Meetings & General Meetings

*Take particular note of the General Membership Meetings (shaded) that are held at various locations. You are cordially invited to attend. Details on the location and program for the next General Meeting are listed on the back page of this Newsletter. A great deal of important information will be given. The Business Meetings listed all begin at 9:30 a.m. and are held at the RELAC Office which is located at 1000 S. Fremont Avenue, Ste. 0101, Alhambra, CA, Telephone No. (626) 308-0532 or toll free (800) 537-3522.*

### GENERAL MEMBERSHIP MEETING

March 16, 2005 (3rd Wednesday)  
Northridge Women's Club  
18401 Lassen Street  
Northridge, California  
9:30 a.m. - 12:00 p.m.

### BOARD MEETING

March 24, 2005 (4th Thursday)  
RELAC Office

### BOARD MEETING

April 28, 2005 (4th Thursday)  
RELAC Office

### BOARD MEETING

May 26, 2005 (4th Thursday)  
RELAC Office

### GENERAL MEMBERSHIP MEETING

June 16, 2005 (3rd Thursday)  
Diamond Bar Center, Room A  
1600 S. Grand Avenue  
(In Summeridge Park)  
Diamond Bar, California  
9:30 a.m. - 12:00 p.m.

### BOARD MEETING

June 23, 2005 (4th Thursday)  
RELAC Office

### BOARD MEETING

July 28, 2005 (4th Thursday)  
RELAC Office

### BOARD MEETING

August 25, 2005 (4th Thursday)  
RELAC Office

## RELAC ENDORSEMENTS FOR ELECTION TO LACERA BOARDS

The RELAC Board of Directors has voted unanimously to endorse the following candidates for election to the LACERA Boards of Retirement and Investments and urges that retired members of LACERA vote for them in the up-coming elections.

**Bill de la Garza** for Retired Member,  
Board of Retirement

**Diane Sandoval** for Retired Member,  
Board of Investments

**Ed Morris** for Alternate Retired Member,  
Board of Retirement

Bill de la Garza is an incumbent on the LACERA Board of Retirement and was chosen by the board to be its Secretary. He has been a strong advocate on behalf of the interests of LACERA's retired members. He served two terms as RELAC President and is currently Vice President of CRCEA (California Retired County Employees Association), an organization dedicated and committed to enhance and protect retiree benefits.

Diane Sandoval is highly knowledgeable regarding the financial affairs of LACERA, having risen to the position of Chief of LACERA's Accounting Division prior to her retirement. Diane will be a very well qualified member of the Board of Investments. She is currently President of RELAC, having been re-elected to her second term.

Ed Morris was recently appointed by the Board of Retirement to the newly created position of Alternate Retired Member. He is now running for election to a full term in that position. Ed had many years of active service for LACERA including management responsibilities as a Division Chief. He is currently both the First Vice President and Treasurer of RELAC.

## Investments Board

*by Diane Sandoval*



Every three years, the LACERA Board of Investments is required by law to direct an actuary to perform an actuarial valuation and investigation study of the System. The next valuation covers a three-year period beginning July 1, 2001 and ending June 30, 2004. The study will cover the mortality, service, and compensation of the members and beneficiaries and will evaluate the assets and liabilities of the retirement fund.

The purpose of a valuation is to determine the amount of future member and employer contributions which are needed to pay all expected future benefits. It is, if you will, a measure at a point in time of the assets that are available to pay benefits versus the total liabilities of the System.

LACERA's Annual Valuation as of June 30, 2003 reported the funding status to be at 87.2%; the funding status as of June 30, 2004 will be reported at the Board meeting on March 23, 2005.

### ACA 5

In my President's Message I made the assertion that replacing our defined benefit plans with defined contribution plans would increase pension costs for Los Angeles County.

### WHY WILL COSTS INCREASE?

ACA 5 allows for existing members to transfer the money in their retirement accounts into a defined contribution plan. These withdrawals might require LACERA to prematurely sell assets to cover these transfers. Since LACERA's defined benefit plans would be closed to new employees, the contributions into the System by employees who remain would be significantly reduced. This might trigger a need to keep LACERA's assets in more secure, liquid assets that would produce lower investment earnings.

LACERA being a mature pension plan pays out more in benefits than it receives in contributions. Consequently, investment earnings play a major part in keeping the Fund financially sound. Net investment income for fiscal year 2004 was \$4.12 billion.

### RELAC NEEDS YOUR HELP

ACA 5 if passed will amend the constitution and will require a vote of the people. Your RELAC Board has joined with CRCEA to aggressively oppose its passage. However, that is not enough, we need your help in contacting the Governor and your state representatives. Let them know that you strongly oppose ACA5 and ask them to do the same.

RELAC also needs the help of those living in other states. You can help by contacting your friends and relatives residing in California. Ask them to contact their representatives to voice their opposition. Thank you for your continued support and interest.





# For Sale

Rose Hills, Whittier. Garden of Affection. Lot #810, graves 3 & 4, \$3,000. Call Gilbert or Lola Trujillo - (714) 893-3236.

Rose Hills, Whittier. Garden of Comfort Lot #1126, graves 3 & 4, retails at \$5800. Owner will sell at \$2200 each. Transfer fee included. Call Hope - (626) 280-3672

Campsite \$4500. Location: Lytle Creek, California 92358. Or make an offer. Call Geraldine Singletary (323) 294-4375.

Double Niche - Forest Lawn, Covina Hills. \$375.00. Tillie Arvizo (909) 391-1684.

Miscellaneous For Sale: 2 beautiful table lamps, brass base with leaf & vine detail. Off white fringed shades. On/off switches on lamps and cords. 8" tall, base is 8" in diameter. Excellent condition. Orig. \$125 each, now \$35 each. Little Tike bookcase (blue/white) - \$20.00. Child's wooden table & 4 chairs - \$45.00. 2 brand new garment racks (never used) - \$10.00 each. Lady's faux fur jacket (black with faux mink collar) - \$25.00. Like new, assorted blouses & dresses - sizes 5-7-9 - \$5.00 each. Call Lillian (818) 348-1968.

Land For Sale: 160 pristine acres in the hills overlooking the historic town of Yreka, CA. Spectacular views of Mt. Shasta and the Trinity Alps. Only 20 minutes from town. Has a spring for water, power and multiple building sites. Road is county maintained. A rare find at \$165 K. Call Ken Britt (530)346-2175.

Underground House: Round. Central atrium with windows and spiral stairs access. 1850 square feet indoor living space. Surface 3 car garage and shop with inside stairs to house. On 5 acres rural; selling house and 2+ acres with option on other 2+. Horses OK. River access and marina. Listed @ 290,000. For e-mail pictures call Maxine at (928) 768-3153 or msdn@citlink.net.



## HOLLYWOOD PARK 4th RELAC DAY AT THE RACES

by Greg Walia

Hello, my fellow Retirees and Horse Race Fans,

Mark Wednesday, June 22, 2005 on your calendars please! It's the "FOURTH RELAC DAY AT HOLLYWOOD PARK" event. We will meet in the "Finish Line Cafe". Folks, this location has an outstanding view of the beautiful racetrack. And most of all, for your luncheon pleasure the "All American Grill" menu selection will be offered...a delicious selection of food items.



First race begins at 1:00 p.m.

As in the past, your ticket will have a stub for entry plus a second stub for your lunch. Address and directions to the racetrack are printed on the back of your ticket. A race will be named in RELAC's honor and eight RELAC members will be randomly selected to have their picture taken with the winning horse and jockey.

Admission price including lunch is only \$25.00 per person. Self parking is free. Valet parking is \$8.00 per car.

Deadline to order tickets: May 31, 2005. Tickets will be mailed to you by June 10.

SEE YOU ALL AT THE TRACK, AND BRING A FRIEND.

### RELAC DAY AT THE RACES Hollywood Race Track Wednesday, June 22, 2005

Name: \_\_\_\_\_

Address: \_\_\_\_\_

City: \_\_\_\_\_ State: \_\_\_\_\_ Zip: \_\_\_\_\_

Telephone (\_\_\_\_) \_\_\_\_\_

No. of tickets \_\_\_\_\_ @ \$25.00 ea. = \$ \_\_\_\_\_

TOTAL \$ \_\_\_\_\_

Enclose a check (no cash please) for your total payable to RELAC and mail to:

RELAC  
1000 S. Fremont Ave., Unit 15  
Alhambra, CA 91803-8802

**DEADLINE for ordering tickets: May 31, 2005**

Tickets will be mailed to you by June 10

For Office Use:

Date: \_\_\_\_\_

Amt: \_\_\_\_\_

Ck#: \_\_\_\_\_



**CREDIT UNION**

Bringing Your Dreams To Reality<sup>sm</sup>

### BRANCHES

#### Downey

8545 Florence Ave.  
Downey, CA 90240

#### Los Alamitos

10701 Los Alamitos Blvd.  
Los Alamitos, CA 90720

#### Los Angeles

300 N. Los Angeles St., Ste. 2044  
Los Angeles, CA 90012

### PHONE NUMBERS

562.862.6831  
800.426.1917

### QUICKLINE

888.426.1918

### FAX NUMBERS

General 562.861.4562  
Loans 562.596.9865

### WEB SITE

[www.SouthlandCU.org](http://www.SouthlandCU.org)

## Earn a Two-Year Rate In Half the Time!

Dear RELAC Members,

Are you looking to earn more in less time? If so, look no further than Southland Credit Union. At Southland you can earn a 2-year rate in half the time!

### 1-Year AcceleRate Certificate Accounts Earn

# 3.00%

APY\*

Begin enjoying one of the best rates around with as little as \$1,000! Southland AcceleRate Certificates give you the ability to increase the rate of your Certificate one time during the term. With AcceleRate, you have peace of mind knowing that you can take advantage of a great rate today and still take advantage of a better rate tomorrow.

Start earning more in less time! Call a Financial Service Representative at 800.426.1917, or stop by your local branch to open your 1-Year AcceleRate Certificate Account today!

Southland Credit Union would like to take this opportunity to wish you and your family good health and financial well-being.

\*APY=Annual Percentage Yield. Rate quoted effective 2-01-05 and is subject to change without notice. Early withdrawal penalties may apply. Rate quoted may not be combined with any other offer. AcceleRate feature is available one time during the term of your Certificate.

### Southland Products and Services

- Savings & Checking w/ Visa<sup>®</sup> Debit Card
- Money Market & Certificates of Deposit
- Individual Retirement Accounts
- New & Used Vehicle Loans
- Recreational Vehicle Loans
- First Mortgage & Home Equity Loans
- Home Equity Lines of Credit
- No-Fee Southland eServices:  
eBranch, ePay, eStatements, and eLoans
- Direct Deposit
- Overdraft Protection
- Automatic Transfer of Loan Payments
- Quickline -- Automated Telephone Teller

This advertisement was developed by Southland and approved by RELAC in order to defray the cost of the printing and distribution of this newsletter and as a service to RELAC members.



We Do Business In  
Accordance With the  
Federal Fair Housing  
Law and the Equal  
Credit Opportunity Act





# Golf News



## SANTA ANITA GOLF TOURNAMENT

By Ed and Cecile Barrios

After weeks of monsoon-like weather, 68 RELAC golfers were blessed with a beautiful sunny day at Santa Anita. Lorenzo Coney had the lowest gross.



See you April 5, 2005 at La Mirada.

### Flight "A" (0-19 Handicap)

- 1st Coney, Lorenzo (62)
- 2nd Mosley, Sanford (67)
- 3rd Yonamine, Shig (68)

### Flight "B" (20-25 Handicap)

- 1st Hamasu, Mas (63)
- 2nd Perkins, LC (64)
- 3rd Chancellor, Alan (66) \*

### Flight "C" (26-36 Handicap)

- 1st DeHaan, Roger (62)
- 2nd Robinson, Matt (63)
- 3rd Black, Terry (66)

### Flight "D" (Calloway)

- 1st Smith, Allen (65)
- 2nd Saavedra, Dave (71)
- 3rd Asuncion, Tony (74)

### Ladies "All"

- 1st Justus, Sandy (71)
- 2nd Hamasu, Lil (73)

### Closest to the Pin on 3 Pars

- Gamble, Del on #4
- Hamasu, Lil on #8
- Sandoval, Gil on #12
- Malmfeldt, Ron on #15

\*indicates tie broken by lower handicap

**NEXT TOURNAMENT**  
**Tuesday, April 5, 2005**  
**LA MIRADA GOLF COURSE**

## 2005 Golf Tournament Schedule

April 5  
La Mirada

June 6  
Los Amigos

August 1  
Los Verdes

October 3  
Lakewood

December 6  
Whittier Narrows



Mark Your  
Calendars!

## RELAC Golf Entry Form

La Mirada Golf Course  
15501 E. Alicante Road  
La Mirada, CA 90638



**Tuesday, April 5, 2005**

*Please Print*

1. Name \_\_\_\_\_

Address \_\_\_\_\_

City \_\_\_\_\_ Zip \_\_\_\_\_

Phone \_\_\_\_\_

**FEES: \$31 per golfer - Cart Extra**

If possible, place me in a foursome with  
below listed golfers.

Addresses of all golfers must be included.

If possible, we would prefer  
an early \_\_\_\_\_ late \_\_\_\_\_ starting time.

2. Name \_\_\_\_\_

Address \_\_\_\_\_

City \_\_\_\_\_ Zip \_\_\_\_\_

Member ☐ Guest ☐

3. Name \_\_\_\_\_

Address \_\_\_\_\_

City \_\_\_\_\_ Zip \_\_\_\_\_

Member ☐ Guest ☐

4. Name \_\_\_\_\_

Address \_\_\_\_\_

City \_\_\_\_\_ Zip \_\_\_\_\_

Member ☐ Guest ☐

*Note: Only one guest per member.*

Enclosed check for \_\_\_\_\_ golfers @ \$31 per  
golfer. Make check payable to RELAC  
GOLF. Mail to: RELAC GOLF, 1000 S.  
Fremont Ave., Unit 15 Alhambra, CA  
91803-8802

**ENTRY DEADLINE - March 15, 2005**

**For Office Use:**

Date Rec. \_\_\_\_\_

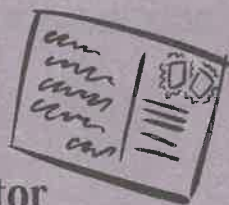
Amt\$ \_\_\_\_\_ Ck# \_\_\_\_\_

## Contributors Welcome....

Your  
Newsletter is  
open to contributors  
from all our members.  
We do have limited  
space, so we ask that  
you limit your  
contributions to items  
which are about our  
retirees or matters  
which affect the  
quality of retirement  
living. WE ARE NOT  
ABLE TO USE  
PARTISAN OR  
CONTROVERSIAL  
POLITICAL POINTS  
OF VIEW because of  
our non-profit  
organization status.  
If you have something  
of interest you'd like  
to share, send it to  
RELAC, 1000 South  
Fremont Unit 15,  
Alhambra, CA 91803-  
8802



## Letters To The Editor



I was very happy to receive your beautiful Holiday Greeting card from the Outreach Committee. Thank you. You're all very considerate. I appreciate it. I wish everyone an abundance of God's Blessings, not only for now, but for the coming year, for good health and happiness and peace.

*Frances V. Hill  
Amity, OR*

Thank you for the pocket secretary. I look forward to receiving it every year. My wife and I enjoy the RELAC Newsletter and read it thoroughly and find so much information in it. Keep up with an excellent Newsletter.

*Dean Ritchie  
Palmdale, CA*

How blessed I am to have folks working so hard to help me live well. I am especially thankful for all the wonderful health programs. A great 2005 to all of you. Thanks again.

*Lorraine Harris  
Cudahy, CA*

Add my name to list of members who enjoy receiving the RELAC newsletter. I will be celebrating my 81st birthday on January 27. I was born in 1924, worked for L.A. County Dept. of Health Services from Oct 1966 to Feb. 1986. After that I worked part time "as needed" until 1993 when I moved to Utah. Thanks again for keeping us informed.

*Doris Jones  
Santa Clara, UT*

This is just a note to thank you for the calendar and to tell you how much I enjoy reading the newsletter. As a survivor it helps me understand the goings on in the county. Thank you again for a job well done.

*Mary Jane Hart  
Pacifica, CA*

Thank you for doing such a good job keeping us on our toes. Now you know how many of us read the RELAC newsletter. It is so full of vital and fun to do information. Glad to see the upcoming Las Vegas Regional meeting. Hope to see some old friends.

*Arleen McDonald  
Bullhead City, AZ*

Thank you for your publication. I look forward to it for up-to-date retiree news and any news of my co-workers that I've missed. After over 29 years of County service, I retired in 1984 from Harbor UCLA and look forward to my 82nd birthday in April.

*Lillian Dicken  
Torrance, CA*

Thanks for the pocket calendar and the WW II stories from the vets. I was a teenager during that era and it makes me feel good about the bravery and honor that time.

*Jeanne Thompson  
Santa Cruz, CA*

I have enjoyed 26 years of retirement. We have the best retirement system there is. Thank you. I am 81 years young and in good health.

*Bernice Delaney  
Lynwood, CA*

Outreach Committee — Thank you for your interest. Being 90 years old, my interests are limited. Good luck to RELAC!

*Beverly E. May  
Saugus, CA*

Thank you for the RELAC 2005 pocket secretary - look forward to receiving it - does a great job of keeping my appointments. Here's my Valentine drawing gesture - something to look forward to even if we do not win. Thank you so very much. My husband worked for the county, Charles P. Porterfield, passed away 4 years ago now and I'm 84 years old.

*Theresa Porterfield  
Mesa, AZ*

RELAC Staff - Thanks for all your wonderful work and a Healthy Happy New Year to all!

*Helen K. Goldberg  
Studio City, CA*

Thank you for all you do for so many of us. Take care and God Bless.

*Elizabeth Calciana  
Los Angeles, CA*

Thank you for the opportunity to be a Valentine - 17 years a widow and 83 years old - makes it a lovely memory of past years. RELAC-LACERA have made my life comfortable. Thank you so much.

*Ruth Hurtt  
Long Beach, ca*

## RELAC NEWSLETTER

Vol 40 • March/April 2005

Number 2

Retired Employees of  
Los Angeles County  
1000 S. Fremont Ave. Unit 15  
Alhambra, CA 91803-8802  
(626) 308-0532  
(800) 537-3522  
Fax (626) 308-2901

E-mail: admin@Relac.org

## BOARD of DIRECTORS

President:

*Diane Sandoval*

1st Vice President:

*Edward C. Morris*

2nd Vice President:

*Domingo Delgado*

Secretary:

*Mary Lou Bangar*

Treasurer:

*Edward C. Morris*

Past President:

*Raymond Guyovich*

## MEMBERS

*Harriet Baker*

*Alan Chancellor*

*Bill de la Garza*

*Sol Fingold*

*John F. Fleming*

*Martin Golds*

*James A. Harrigan*

*Dave E. Kalingier*

*Fred J. Miller*

*Greg Walia*

## MEMBER EMERITUS

*Norman S. Johnson*

Editor: Martin Golds  
Copyright © 2005 by RELAC  
The information presented in  
your RELAC Newsletter is  
believed to be from reliable  
sources. However, no  
responsibility is assumed by  
RELAC or the writers for  
inaccuracies in the articles as  
published.

OFFICE HOURS  
9:00am - Noon &  
1:00pm - 4:00pm  
Monday - Friday  
Closed Saturday, Sunday &  
Public Holidays



Continued on p. 9



continued from p.8

RELAC-when I arrived at the Quiet Cannon Luncheon the other day, my name did not appear on the list of invited guests. Somewhat perturbed as I just knew that I had sent in my check to attend the affair, I was given entry to the luncheon and I did not have to pay again. I enjoyed the afternoon with my retired friends as the program was great and lunch and guest speaker were good and interesting. After searching through my checkbooks looking for the check that I knew I had written to RELAC for the luncheon, I was amazed that I could not find evidence that I had paid. Guess I had another senior moment and thus, I am enclosing my check for the luncheon belatedly with my apologies. Thank you.

*Kaz Hosozawa  
Cerritos, CA*

I am very sorry I was not able to vote in this past election, but my mail arrived 20 days after the election. I moved to Panama because of sickness and loneliness, but I miss all the meetings, especially the one on Christmas since my birthday is on December 19. I always celebrated by attending this special meeting because of the bands, See's candies, raffles, the envelopes with the money and see my ex-coworkers. I miss you all and the California State. I am very thankful for all you do for us retirees.

*Nemesia Portillo  
Republica de Panama*

Dear "Mrs. RELAC" (aka Sandoval) - Great day in the morning! It went like this: As is my usual habit, I took time out to read the Jan/Feb 2005 Newsletter as soon as the postman slipped it through my mail slot and was bowled over at the amount of information it contained, thinking to myself that with such a "loaded" report, it really should have required more postage. It isn't that each issue hasn't contained the "low-down" on all news for and about us, but the realization that, in this issue, the business "stats" as printed would have required so much more than just the time it took to put it in writing (or print). "Blood, Sweat & Tears" - to quote "Winnie". The mere scope of the report is almost mind-boggling! The execution in so many areas and categories, as well as the large number of dedicated individuals who contributed with their input, and finally the Organizing of each separate category to compile such a survey definitely calls for "Kudos" from all of us out here who benefit from the knowledge that, beyond a doubt, "someone is watching the store". Long may you wave! Yours most sincerely,

*Kathryn Harker  
Los Angeles, CA*

Dear Friends - My husband and I always enjoy the RELAC newsletter and appreciate all that you dedicated officers do for us. You do present fine tours at reasonable prices: Death Valley, Costa Rica, Australia, New Zealand. We've done all of them and now have wonderful memories and pictures. February 3 we celebrate 64 years of togetherness.

*Maxine M. Hays  
Mohave Valley, AZ*

I enjoy the newsletter, especially the recent items about WW II. I was in the Army and spent most of my years in France. Because I speak German, learned as my first language in Minnesota, I was transferred to Provost Marshall's office and assigned to two Prisoners of War camps where I interrogated German POWs and in many ways arranged for activities to keep them busy. The POWs in return made me a number of very interesting mementos — one a scale model of the German ship "Admiral Hipper" which in real life was scuttled at the end of the war.

*Leonard Wendland, PhD  
Hacienda Heights, CA*

## REGIONAL ACTIVITIES

*By Alan Chancellor*

As of the date of writing this article, we are excitedly looking forward to our first Las Vegas members luncheon-meeting on March 3, 2005. Thus far our expected member attendance looks like it will exceed our initial expectations. We'll tell you all about it in our next article.



While we're involved and committed to the Las Vegas event, your Regional Support Committee has kept its collective nose to the grindstone arranging other regional meetings throughout the remainder of the year. They are:

### **Lancaster/North County - May 19th**

This luncheon-meeting is being organized and hosted by Donna Livermore and the great group of volunteers who always join her in this effort and will be held at the Lancaster Elks Lodge. Come for lots of fun, great food and humor, and some tall tale telling. All of this for just \$16.00 per person. To make your reservation just complete the form below and mail with your check to RELAC.

### **Huntington Beach/Orange County - July 20th**

This will be a casual morning meeting with coffee and refreshments, running from 9:00am to 12 noon. The location and other particulars will be in our next newsletter. Save the date!

### **Temecula - October 12th**

We are organizing a traditional luncheon-meeting to be held in the area. We hope you'll share the day with many of your Board members at this sure to be worthwhile and enjoyable event.

#### **NORTH COUNTY LUNCHEON-MEETING**

Thursday, May 19, 2005

Doors Open 11:30am, Lunch @ 12noon

Lancaster Elks Lodge

240 East Avenue K, Lancaster

Name \_\_\_\_\_

Address \_\_\_\_\_

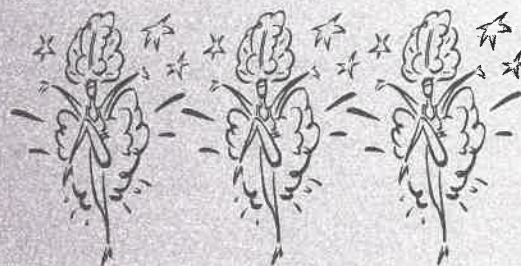
Guest(s) \_\_\_\_\_

#Tickets \_\_\_\_\_ x\$16.00 each = \_\_\_\_\_

**Deadline is May 12, 2005**

As you can see, we're working hard to bring information and activities directly to you, our members. We're looking forward to seeing each of you at one of these really worthwhile and interesting meetings. Join us; you'll be glad you did.

# Members Spotlight



## L.A.S.D. 24th ANNUAL RETIREE'S REUNION

**Monday, June 13 - Friday, June 17, 2005**  
**Inter-Mountain Fairgrounds**  
**McArthur, California**

Located on Highway 299, approximately 70 miles east of Redding, this beautiful Valley between the peaks of Mt. Lassen and Mt. Shasta is a great location to gather together with other Los Angeles County Sheriff's Department retirees from all over the U.S. Bring your RV, tent or stay in one of the local motels in Fall River Mills. Full hook-up camping with cable TV, showers, launder and 30/50 amp service at \$14.00 per night. The cost for the reunion is \$10.00 per person. (Includes one catered dinner and liquid refreshments for five days.) Paid at the campground. Activities include golf at a championship 18-hole golf course, horseshoes, lawn darts, card tournaments, potluck dinners, barbeque, fishing and sightseeing. Or just kick back and relax. Plenty of war stories. See old friends and meet new ones. Newly retired and surviving spouses are especially welcome! Adult participation.

If you would like to attend, you can call, write, or e-mail us with the number of persons in your party, and if you plan on staying at the RV park, motel, or other.

For additional information contact:  
Richard or Judy Smith  
11318 Fairview Avenue  
El Monte, CA 91732-1038  
(626) 444-0686  
retiredstars@earthlink.net

Come out and have a great time!! Hope to see you there!!



*Megan and Calvin (Red) Butler enjoying their dance at RELAC's Annual Installation Luncheon held on January 14, 2005. Red retired from the Flood Control District. (photo by Sol Fingold)*



Many RELAC members live in far-away and exotic places. If you do we would like to hear from you. How did you choose your new home and what is interesting about being there?

## Valentine Drawing 2005

BAKER, Yvonne G. - Los Angeles, CA  
BANKS, Mattie - Los Angeles, CA  
BOATRRIGHT, Henry - Seal Beach, CA  
BUGLER, Moyna B. - Palmdale, CA  
CHAN, Mari - Alhambra, CA  
COOK, Lenora - Stamps, AR  
CUNY, Eugene J. - Long Beach, CA  
DISHMAN, M. Jean - Springfield, MO  
DRUMM, Audrey J. - Carlsbad, CA  
EISMAN, Fred J. - Whittier, CA  
GETZFREAD, Joseph P. - Oceanside, CA  
GOMEZ, Trinidad J. - Yorba Linda, CA  
GRIFFITH, Mary G. - Los Osos, CA  
GRISMORE, Lynette - Arleta, CA  
HANES, Earl E. - Reno, NV  
HAYASHI, Sally - Seattle, WA  
HAYES, Louise M. - Los Angeles, CA  
HEMBURY, John R. - Camano Island, WA  
HERNANDEZ, Marie A. - Los Angeles, CA  
HEWITSON, Charles - Lytle Creek, CA  
JENNINGS, Betty - Lake Forest, CA  
JEWEL, Betty W. - N. Las Vegas, NV  
JOHNSON, Frank - Cambria, CA  
JUNG, Ron - Los Angeles, CA  
KRAMER, Leonard - Fullerton, CA  
KURISU, Kenneth - Rosemead, CA  
LISH, Verl R. - Boise, ID  
MANHEIM, Norma - Bethesda, MD  
MARQUEZ, Irene F. - El Paso, TX  
MEANS, Elizabeth - Galesburg, IL  
NAGANO, Yukiko - Los Angeles, CA  
NORTH, Hetty - Lake San Marcos, CA  
OGLESBY, Alberta - Altadena, CA  
PAVLICK, Kenneth L. - Ft. Lauderdale, FL  
POOL, Lynell C. - Los Angeles, CA  
RIES, W. Alan - Duarte, CA  
RITCHIE, Michael - Palmdale, CA  
SPINKA, Ray - Redlands, CA  
VEGA, Teresa - Los Angeles, CA  
WALKER, Walt - Ventura, CA

## RANCHOS REUNION LUNCHEON

**Wednesday, May 11, 2005**

**Anaheim Embassy Suites**

**For Reservations and Info call:**

**Edie Baker (562) 869-6065**

**Joyce Detki (714) 630-4767)**



## RELAC Board Opposes Retirement Plan Change

On January 27 the Board of Directors of RELAC voted unanimously to oppose legislation which proposes to eliminate all existing defined benefit plans for public employees in California and replace them with defined contribution plans. LACERA's Board of Retirement has taken a like action in opposition. RELAC will be working with like-minded organizations, especially the California Retired County Employees Association, to defeat this proposal,

The bill, Assembly Constitutional Amendment 5, introduced by Assemblyman Keith Richman, is supported by Governor Schwarzenegger. If ACA 5 is adopted the effect would be to close entry to new public employees into all existing public employee defined benefit retirement systems in California including those whose members are the employees of Los Angeles County. Starting on July 1, 2007 new employees would be forced to join only a defined contribution retirement system such as a 401(k) plan.

While those of us who are retired would remain in the existing plans, those plans would be weakened because employee and employer contributions for those hired after July 1, 2007 would no longer be flowing into the retirement system and would not be available to be invested and earn income for the existing investment pool. (See the related article on page one for further explanation.)

If passed in the legislature a proposed amendment to the California Constitution would be placed before the voters. If the legislature refuses to pass ACA 5 initiative petitions will be circulated to place the matter on the ballot. It is anticipated that the Governor will call for a special election to be held this coming November and will vigorously support change to defined contribution plans for all public employee retirement systems in California.

It is not too soon for RELAC members to express their views to the governor and to their state legislators. The governor's address is Governor Arnold Schwarzenegger, State Capitol Building, Sacramento, CA 95814; e-mail can be sent via his web site: <http://www.govmail.ca.gov>

The names and addresses of your State Senators and Assembly members can be found at: [www.leginfo.ca.gov/yourleg.html](http://www.leginfo.ca.gov/yourleg.html)

## RV Outing Notes

By Janell Clifton



When we checked into the Pechanga RV Resort we thought we were in need of Noah and his ark, but a little rain didn't stop us from having a lot of fun with the campers who rowed in to be with us. Joe and Helen Quintana did a great job as wagon masters, with the help from Assistant wagon masters Mike and Veronica Reyes and Frank and Diane Maestas. Ten rigs were in attendance.

During Tuesday morning business meeting new officers were elected. Ed and Janell Clifton, as Coordinators, Joe Quintana as Treasurer and Diane Maestas as Secretary. Earline Dean gave the Treasurer's report for 2004 and then turned the books over to the new Treasurer. Earline and Wendell Dean will be missed as members, and, of course, Nell Heard and her help will also be missed. A gift card was given to the Deans as a "thank you" for all their help over the years.

A discussion was held whether to return to Pechanga next year. Dissatisfaction about lack of bathroom in Clubhouse and cold shower rooms led us to find another park for next year.

The holiday part was a big success and 33 quilts were given to Casa Kids. Also, stuffed animals and other toys were presented to Sue Thompson by Sara Campbell. Pictures of the ladies and all the gifts are following this article.

The March campout will be in Hemet with Frank and Diane Maestas as wagon masters, March 21-22-23. Coupon following will be for Flying Flags RV in Buellton May 2-3-4, 2005. Alfonso and Sara Campbell will be wagon masters. Deadline for sending money is April 1, 2005. Always remember table service.

### R.V. CAMPOUT RESERVATON



CAMPGROUND: FLYING FLAGS RV PARK  
180 Avenue of the Flags  
Buellton, CA 93427  
DATES: May 2,3,-4, 2005

NAMES: \_\_\_\_\_  
Last Retiree Spouse

Address: \_\_\_\_\_  
No. Street

City Zip

Telephone: ( ) \_\_\_\_\_

**DEADLINE: April 1, 2005**

**Make checks for \$99.54 payable to Alfonso Campbell and mail to:**

Wagon Master: Alfonso Campbell

Address: 2352 W. 30th Street, Los Angeles, CA 90018

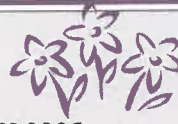
Telephone: (323) 732-5793

Additional nights through Resort Office at \$32.18- Call in advance at toll free (805) 688-9245

Motor Home \_\_\_\_\_ Trailer \_\_\_\_\_ Length \_\_\_\_\_



## IN MEMORIAM



DECEMBER 2004/JANUARY 2005

This list includes retired employees, both RELAC members and non-members

\*Denotes RELAC members.

### ADOPTIONS

Brown, Evelyn B. \*

### ALCOHOL/DRUG PGMS. ADMIN.

Wilson, Fay E. \*

### ASSESSOR

Kiertzner, Otto E. \*

Mangumsomers, Gerald R. \*

Waugh, Agnes H. \*

### AUDITOR CONT

Ayala, Louise

### BEACHES & HARBORS

Flores, Raul M.

### BLDG SVCS

Hyche, Robert \*

### CALIF CHILD SVCS

Barreau, Lamerice

### CHILD SUPP SVCS

Amaranto, Sucedo R.

Archer, William T.

Perkins, Ruth M. \*

Washington, Rosemary

### CHILD SVCS

Bennett, Isaac, Jr.

Bordman, Lillian Y.

Gallagher, Catherine

Hall, Walter L

Reid, Mary E.

Walker, Martha J.

York, Ida J. \*

### COM DEVELOPMENT

Hollis, Frances L. \*

### COM HLTH SVCS

Evans, Ruby E.

### COMMUNICATIONS

Martini, Anthony F.

### COUNTY COUNSEL

Early, A.R. \*

### DIST ATTY

Romeyn, Thomas A.

### DPSS

Bailey, Carrie L.

Bowen, Jarmila J. \*

Crook, Roy J. \*

Haworth, Harold \*

Hodge, Bettye J.

Kaciff, Bertha R

Kahn, Jerome

Lofthus, Jeanne

Manly, Ellen C.

McCrary, Caroline

Merrill, Bradford F. \*

Nissan, Harry E. \*

Popov, Marilyn A.

Provot, Ellen M. \*

Reames, Sue N. \*

Reed, Josephine B. \*

Ruffin, Bobbie J. \*

Vo, Hai D. \*

Vogel, Jane \*

Washulewski, Barbara

White, Mary A. \*

Zeiler, Elaine

### ENGINEER

Gonzalez, Eduardo \*

### FACILITIES

Johnson, Robert I. \*

Miyaji, Hiroshi \*

Rosen, Glenn \*

Walters, Lawrence J. \*

### FIRE

Hagan, Richard A. \*

Hubbard, Fred M. \*

Liddell, Robert C. \*

Rossberger, Thomas J.

### FLOOD CONTROL

Roche Jr., Richard B. \*

Wallace, Roy B. \*

### HARBOR/UCLA

Anderson, Geraldine V.

Araos, Juliana V. \*

Wood, Dolores E.

### HLTH SVCS

Badostein, Margaret F. \*

De La Vega, Eileen P.

Hollingsworth, Gerald \*

Kalingking, Delfina \*

Macnair, Archibald \*

McCarthy, Mary A. \*

Merrick, Marie L. \*

Mostyn, Lily B. \*

Rodgers, Lula M. \*

Schweitzer, Ernest \*

### HIGH DESERT HLTH CTR

Hobson, Nina F.

### HOSPITALS

Atlas, Bernice \*

Davis, Cornell

Mendoza, Frances

### HOSPITALS - USC

Kolker, Alexander \*

### INTERNAL SVCS

Glaser, Henry

Johnson, Albert R.

Phillips, Betty J.

Singer, Leon H. \*

### JOHN WESLEY

Johnson, Edna M. \*

### KING/DREW

Busch, John K.

Darmas, Anthony M. \*

Duran, Lidia M. \*

Martin, Oscar C.

Pruet, Ernestine

Quick, Mary L.

### LAC/USC

Buck, Allen

Butler, Callie M.

Byrd, Norma J.

Campa, Joseph M.

Cole, Dorothea E. \*

Droz, Paul J.

Johnston, Virginia

Jones, Lee A.

Kolker, Alexander \*

Lanza, Marcella

Leon, Rafael

Mahlow, Henrietta J. \*

Ortgier, Clara C.

Plummer, Velma \*

Secretario, Consuelo M.

Singleton, Bernice

Syas, Lillian J.

Walters, Reta P.

### LIBRARY

Walters, Reta P.

Wiggenhorn, Margaret E.

Williams, Edith P.

Wynkoop, Norma V. \*

### METRO SO CHC HEALTH CENTER

Wilkes, Deborah J.

### MECH

MacDonald, Paul T. \*

### MUNICIPAL CTS

Glaze, Berwyn R. (L.A.)

Welch, Fran C. (L.A.) \*





## IN MEMORIAM

DECEMBER 2004/JANUARY 2005



This list includes retired employees, both RELAC members and non-members

\*Denotes RELAC members.

### NE CHC HLTH CTR

Chavez, Marta E.

White, Faye

### NURSING

Loop, Rita M. \*

### OLIVE VIEW HOSP

Ascher, Lilo \*

Mackay, Richard A. \*

Prokop, Anita F. \*

### PRKS & REC

De Dubovay, Anthony

Fitzsimmons, Thomas F. \*

### PROBATION

Allen, Doris M.

Batchelor, Julious

Boyd, Edna J. \*

Campbell, Larry W.

Costa, Joseph

Elbinger, Gene s. \*

Erlingheuser, Ralph F.

Jackson, Norman E. \*

Nidorf, Barry J. \*

Petruso, Josephine \*

Rowlett, V. J. \*

Southard, Betty J.

### PUBLIC DEFENDER

Phillips, Gerald G. \*

### PUB HLTH PROG

Brown, Leroy \*

Ford, Lynn H. \*

Wagner, Michael

### PUBLIC WORKS

Feldman, Maurice H. \*

Jacobs, John \*

Luna, John R.

Maez, Lee M. \*

### RANCHO LOS AMIGOS

Brooks, Maxine M. \*

Burrell, Mary A.

Chism, James D.

Haproff, Jack W.

Holguin, Leandro

Mc Donald, Rosemarie

Robinson, Sibyl L. \*

Simmons, Jeanette M.

### REGIONAL PLANNING

Sanderson, Harold L. \*

Shea, John M.

### ROAD

Allen, Harry R. \*

Fox, Robert J. \*

### SCAQMD

Youngs, Herbert L. \*

### SHERIFF

Bernard, Earl W. \*

Buenrostro, Josephine

Comber, Anne \*

Eaton, Maxine J. \*

Flores, Robert C.

Franks, Jueren R. \*

Graham, John W. \*

Handley, Franklin E. \*

Koga, George H. \*

Leaf, Heman D. \*

Miscione, Vincent

Olson, Robert L.

Polley, Raymond E. \*

Rightmire, James F. \*

Rosales, Preciosa R.

Saunders, Richard M.

Swenson, Kenneth E.

Tepper, Barry L.

Tullis, Clarine L.

Wadkins, Warren R.

Winslow, Jessica

### SUPERIOR COURT OFFICERS

Hanes, Robert W.

Stodden, Ann A.

### TREAS/TAX COLLECTOR

Mark, Norman

Montgomery, Alden A. \*

Estrada, Cesar

### WOMEN'S HOSP

Hickson, Reafer \*

### DEPT NOT DESIGNATED

Abriam, Modesto L.

Aguilar, Ruby S.

Allen, Doris M.

Argleben, Dagmar M.

Bacer-Hanlom, Josephine N.

Basye, John C.

Boone, Rosalie A.

Brooks, Maxine M.

Burger, Robert T.

Coleman, Eunice

Crump, Franklin D.

Cummins, Reynard B.

Curtis, Peter

Davis, Blake F.

Dealy, James O.

Doyle, Gerald E.

Erickson, Roger T. \*

Essler, Helen D.

Frampton, Thomas J.

Gammell, Virgil

Hackney, John K.

Hahn, Lorena G.

Harrison, James

Hemenway, Dean L.

Horner, Richard H.

Humphrey, Robert L.

Johnson, Steffen R.

Jones, Lee A.

Kantor, Joseph

Kozakowski, Benny

Margulies, Mary E.

Mathews, Robert V.

Maullin, Dorothy W.

Meeh, Lilea L. \*

Meisels, Samuel L.

Meyers, Marvin H.

Mills, Donald L.

Moffitt Jr., Verden M.

Moore, Juanita M.

Morgan, Leo

Parlee, Charles W.

Pease, Walter H.

Peterson, Jean E.

Pierce, Ovid A.

Poland Jr., Lowell D.

Poland, Mabel D.

Risso, Joe V.

Rose, Ben

Schroppel, Robert A.

Smith, Josephine B.

Smith, Nona

Stivers, William N.

Vance, Alma R.

Vazquez, Raul R.

Walker, Martha J.

Walters, Lawrence J.

Watkins, Leon D.

Wells, Evelyn G.

Wooley, Oscar M.

Wright, Corinth

Zlasney, Nathan L.

## New Members



DECEMBER 2004 & JANUARY 2005

### ADOPTIONS

Schoalt, Lynn

### ASSESSOR

Phillips, Mary L.

### AUDITOR-CONTROLLER

Reich, Marianne

### BOARD OF SUPERVISORS

McKibben, John

### CAO

Frazier, Francis V.

### CHILD. & FAMILY SERVS

Fickewirth, David

Mathieu-Nolan, Geraldine

Meiklejohn, Patrick

### COMMUNICATIONS

Vasquez, George

### DPSS

Allison, Dekoler

Dadlani, Bharati

Fernandez, Aida I.

Hesse, Henry M.

Jubinal, Larita

Ratchford, Ezetta F.

Riley, Pauline P.

### HARBOR UCLA

Nixon, Doris L.

### HEALTH SERVICES

Cacheiro, John

Lerma, Margaret

Maedo, Tomiko H.

Yakel, Lanny R.

### LAC+USC

Jimenez, Petra

### MENTAL HEALTH

Manness, Kathryn

### PROBATION

Henderson, Earsel J.

### PUBLIC WORKS

Arnold, Jack L

Chriss, Steven A.

Kays, William G.

### SHERIFF

Colleran, Grace M.

Crowley, Ozetter M.

Evans, Randy V.

Fuller, Oliver III

### SUPERIOR COURT

Goldman, Jean

Mposi, Corrine

Warren, Linda L.

### SUP. COURT REPTRS

Ingersoll, L. Katherine

### DEPT. NOT DESIGNATED

Christou, John

Shane, Harriett

### AFFILIATE MEMBERS

(Active County Employees)

### COUNTY COUNSEL

Fortner, Raymond G.

### REG. PLANNING

Stark, Lee

### DEPT. NOT DESIGNATED

Bellgardt, George

## News From LACERA ...

By Janice Golden

Manager, Member Services Division



LACERA's core mission is to provide the promised benefits to our retirees and survivors. When a member passes away, we need to have copies of certain key documents in our records so that there are no delays in the payment process to a surviving spouse, domestic partner, or beneficiary. For

instance, it is very important that LACERA has a copy of your original, certified certificate of marriage or domestic partnership in our files. We also need to have up-to-date beneficiary information, marriage dissolution documents if the member is divorced, or termination of domestic partnership documents.

When a LACERA retiree passes away, his or her loved ones will have to attend to many details; we don't want to add to their burden by requesting documents at a time that is already very difficult. However, these items are required for us to accurately process benefits in a timely manner. If we get them from you now, we won't have to ask for them later.

Your annual benefit statement is a good source of information and provides an opportunity for you to update or correct your beneficiary records, if necessary. Annual statements are mailed to you during your birthday month, and they include a notation if we need any documents from you, such as marriage certificates. Please carefully review all the information on your statement (such as beneficiary information, addresses, and birthdates), and write any corrections directly on the beneficiary page. Then tear off the page and mail it to LACERA. Additionally, please follow the instructions if your benefit statement indicates we are missing any documents.

If you think we already have a copy of your important documents, but you aren't positive, please give us a call at 1-800-786-6464. We'll be happy to check your records and let you know.

## MARK YOUR CALENDAR!!

### FIREWORKS AT DODGER STADIUM

Los Angeles Dodgers vs.

Arizona Diamondbacks

Sunday, July 3, 2005- 6:10 p.m.

(Coupon in the May/June Newsletters)





continued from p.1

new employees instead of into LACERA's investment fund.

#### LACERA Investment Earnings Reduced

A dwindling amount of cash going into the current system will reduce the amount of the money available for LACERA to invest, reducing its investment earnings and therefore its ability to pay future benefits to already retired members. The County is required by law to make up the difference but it may not be feasible for it to meet the added financial demands.

Saladino pointed out that defined contribution plans will also not be advantageous for new employees. For one thing, under the current defined benefit plans retirement income is guaranteed for life and for the life of a survivor. But under a defined contribution plan retirees could outlive their accumulated retirement funds. In addition there would be no disability benefits provided in a 401(k). Market risks are assumed by each individual member rather than being shared in a common pool and the costs of managing investments will be significantly higher.

#### Officers and Board Members Installed

Saladino served as installing officer, administering the oath of office to the the RELAC officers for 2005. They are:

President Diane Sandoval  
First Vice President and  
Treasurer Ed Morris  
Second Vice President Domingo Delgado  
Secretary May Lou Bangar  
Immediate Past President Ray Guyovich

Also sworn in were Board of Directors members newly elected to three year terms. They are:

Domingo Delgado  
Alan Chancellor  
Bill de la Garza  
Martin Golds

Dave Kalinger, the fifth elected Board member, was not present and was sworn in at a later time by President Sandoval.

### ATTENTION:

#### Diamond Bar General Meeting

On Thursday, June 16, 2005 there will be a General Meeting at the City's Diamond Bar Center. Exit the (60) Freeway at Grand Avenue. Drive south to the traffic signal at Diamond Bar Center. Turn left, and proceed up the hill to the Center. All parking is on your left.

This is a new facility, and you will find it a delightful place for a meeting. An outstanding program is planned. Be sure to mark this date on your calendar.

## Touring With Great Western

626-578-1161 • 800-344-7090

Don't forget to ask for your RELAC discount!

CST# 1016229-40



## Pacific Coast

Spring Fling  
Rail, Sail & Jet!



7-Day Rail/Cruise/Motorcoach/Air Tour

### San Francisco - Victoria - Vancouver

Departs May 12, 2005 From \$1539.00 Dbl. PP

#### Tour Price Includes

- Oneway Amtrak L.A./Oakland • 2-Night Cruise /Dawn Princess (all meals and entertainment aboard ship) • Port Charges
- Airfare Vancouver/LAX • Deluxe Motorcoach Transportation
- Four Nights Hotel Accommodations
- 15 Meals: 3 Continental & 4 Full Breakfasts, 3 Lunches, 5 Dinners
- Guided Tours of San Francisco, Filoli Gardens & Vancouver
- All Transfers • Tax & Baggage Handling
- Complete Travel Protection Insurance

## Yosemite Valley Scenic Summer Special

Three Day Motorcoach Tour

Gambling, Scenery,

Yosemite, Ahwahnee Hotel

Beautiful New Casino in the Sierra Foothills

Departs July 11, 2005

From RELAC Headquarters

★ Orange & Fremont, Alhambra

- Tour Price Includes -

- \* Deluxe Motorcoach Transportation
- \* Two nights at Chukchansi Gold Resort & Casino
- \* Lunch at the Ahwahnee Hotel \* Guided Tour of Yosemite Valley
- \* Squaw Valley Herb Garden \* Driver's Tip \* Tax & Baggage Handling

Double Per Person: \$279.00 Single: \$369.00

## Branson September Songs

5 Day Air/Motorcoach Tour

Departs September 12, 2005

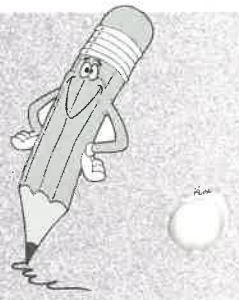
Tour Price Per Person

Double: \$999.00 Single: \$1099.00

Tour Price Per Person

- R/T Air LAX/Kansas City • Airport Transfers
- Deluxe Motorcoach Transportation • 4 Nights Hotel Accommodations • 8 Meals: 4 Continental Breakfasts
- 4 Dinners • 3 Evening Shows • 3 Morning Shows
- Branson Sightseeing Tour • Sightseeing and Admissions Per Itinerary • Tax & Baggage Handling

# General Membership Meeting



Fred Miller  
Chair, Program Committee

**March 16, 2005 - (3rd Wednesday)**

## **NORTHRIDGE WOMEN'S CLUB**

18401 Lassen Street, Northridge, CA  
(Lassen Street east of Reseda Blvd)

9:15 a.m. - FREE Coffee and Donuts  
10:00 a.m. - Meeting Begins

### **FEATURED SPEAKER**

Mr. Edward Fox, President & CEO  
Southland Credit Union

### **"IDENTITY THEFT"**

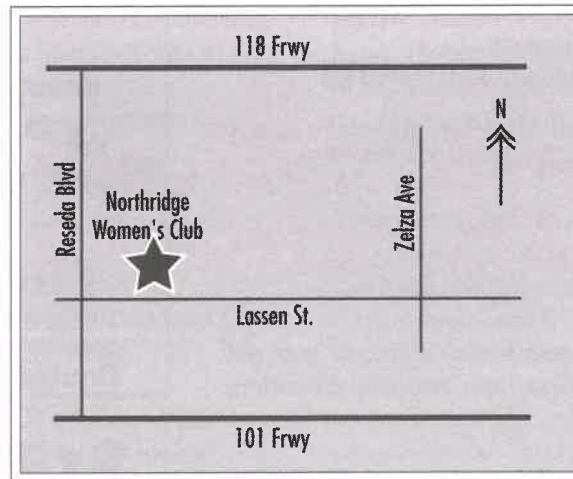
Mr. Fox has had considerable training in the prevention of identity theft.

### **Retiree Information from LACERA & RELAC**

You will need your RELAC membership card.  
Come and Visit with Old Friends & Co-Workers

**DRIVING DIRECTIONS:** To Northridge Women's Club Using the 118 Freeway, exit at Reseda Boulevard and proceed south for 1 mile to Lassen Street. Turn left on Lassen Street about 500 feet to the Women's Club, which is on the north side of the street.

Using the 101 Freeway, exit at Reseda Boulevard and proceed north 3 miles to Lassen Street. Turn right on Lassen Street. The Women's Club is located on the north side of the street.



RETIRED EMPLOYEES  
of LOS ANGELES COUNTY  
1000 South Fremont Ave. Unit 15  
Alhambra, CA 91803-8802

**Return Service Requested**

**IMPORTANT!**  
Are you moving?  
Did you change  
your name?

*Cut out the address  
portion of this  
newsletter, correct it  
and mail to:*

### **RELAC**

1000 S. Fremont, Unit 15  
Alhambra, CA 91803-8802  
or

Phone: (800) 537-3522

Phone: 626-308-0532

Fax: 626-308-2901

E-mail:

admin@relac.org

*Note: It is important  
that you mail this to  
RELAC or contact  
RELAC by phone as  
we DO NOT receive  
your address change  
from LACERA*

NON-PROFIT  
U.S. POSTAGE  
**PAID**  
PERMIT #66  
PASADENA, CA