



LOS ANGELES COUNTY

RELAC Newsletter

A Non-Profit Organization - Incorporated 1958 - Serving 30,000 Members
Member California Retired County Employees Association
Representing 125,000.

May / June 2005 Vol. 40-3

VOTE TO ENSURE EFFECTIVE RETIREE REPRESENTATION ON LACERA RETIREMENT AND INVESTMENTS BOARDS

It has probably never been more vital that Los Angeles County retirees vote to select those who will represent them on the **LACERA Board of Retirement and Board of Investments**. In the coming months and years these Boards will be faced with unprecedented attacks on the County retirement system. There will be a need to protect the benefits of retirees. There will also be a need for all-out efforts to achieve reasonable and fair improvements.

You will receive your ballot in late June or early July. **RELAC is urging that YOU vote and that you vote for the RELAC-endorsed candidates who are dedicated to protecting what we have and to achieving what we need! And encourage your retired friends to vote.** We can't afford to have representatives on the LACERA Boards who passively accept what politicians attempt to take away and fail to fight for we have earned.

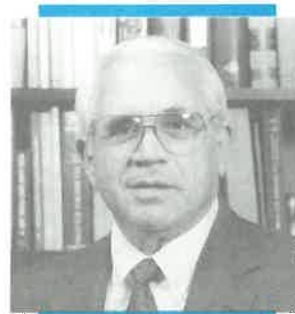


Diane Sandoval

For the retiree seat (Eighth Member) on the Board of Investments RELAC enthusiastically supports **DIANE SANDOVAL**. Diane is currently serving her second term as President of RELAC. Of course she is totally

committed to achieving RELAC's goals: preserving our defined benefits plan and getting the survivor pension benefit increased from 60% to 65% of the retiree's pension. She would not sit quietly while this increase was granted for active employees while being denied to present retirees.

Diane is uniquely qualified to participate in the management of retirement system's investments. She had long service in LACERA's financial operations and rose to the position of Chief of Accounting Division. She really understands how to make our money grow while ensuring that it remains safe. **Diane belongs on the Board of Investments.**

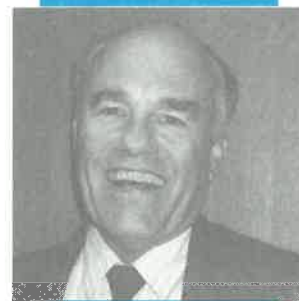


Bill de la Garza

For the retiree seat (Eighth Member) on the Board of Retirement we strongly urge the re-election of incumbent **BILL DE LA GARZA**. Bill has proved himself to be an effective and influential member of the Retirement Board. His highest priority is to enhance and protect our pension and medical plans. Bill previously served two highly productive terms as President of

RELAC. He was instrumental in achieving the appointment of the first Alternate Retiree member.

Bill is also Vice President of the California Retired County Employees Association, a statewide organization which lobbies the State government on behalf of retirees in the twenty counties, including Los Angeles, which are under the County Retirement Act of 1937. There can be no question that Bill knows and is dedicated to serving the interest of retirees. **He richly deserves re-election to the Board of Retirement.**



Ed Morris

For the position of Alternate Retiree (Eighth Member) on the Board of Retirement RELAC urges the election of **ED MORRIS**. The Board of Retirement has appointed Ed to the newly created position of Alternate Retiree Member. In this position he substitutes for the retiree member in case the latter is forced to be absent from a meeting of the Board. With Ed retirees are always assured of effective representation. It is now time to elect Ed to a full term in this position.

Continued on page 2

President's Message

By Diane Sandaval

In previous articles I have mentioned RELAC's close and rewarding affiliation with the California Retired County Employees Association (CRCEA). Following those articles, many of you have called to question why RELAC joined CRCEA. Therefore, I decided to devote this article to explain who CRCEA is; why the RELAC Board values its membership in CRCEA, and how the relationship has benefited the retirees of Los Angeles County.

Who is CRCEA?

CRCEA is a coalition of associations of retired county employees from the 20 California counties with retirement systems formed under The County Employees Retirement Law of 1937 (1937 Act). Los Angeles County's Retirement System (LACERA) was formed under the 1937 Act.

CRCEA's Mission

CRCEA's purpose is to provide a central coordinating group through which the desires and objectives of local county associations may be advanced. In addition, their mission is to promote the health, happiness and continued productivity of retirees who are members of local county associations such as RELAC, and their beneficiaries/dependents.

CRCEA's main goal is to become the voice of 1937 Act County Retirees in the State and making CRCEA a strong and effective voice of advocacy in the State Legislature. CRCEA representatives frequently appear before the State Legislature to testify on matters affecting our pension and medical benefits.

Benefits of Joining CRCEA

CRCEA has been instrumental in influencing many pieces of legislation affecting the 1937 Act counties. A recent example of their influence was the creation of an Alternate Retired Member seat on the retirement boards. Los Angeles County retirees now have an Alternate Retired Member (Ed Morris) on the

LACERA Board of Retirement thus providing back-up to the Regular Board Member in the event he is unable to attend a meeting.

CRCEA provides RELAC and its members a stronger, more effective voice at the state, national and local levels in matters affecting retirement and health care benefits. Presently, with the current threat to eliminate defined benefit plans throughout California, there is a greater need for a strong and united voice to protect and preserve our retirement and medical benefits. With CRCEA at our side, we are 125,000 strong and represent a major voter influence on legislators who depend on voters for approval and reelection.

Please look for my Investment Article on page 7 to find out how you can help defeat the elimination of defined benefit plans. As always, thank you for your support. I look forward to seeing you at our future Regional Support and General Membership Meetings.

Continued from page 1

Ed is currently both the First Vice President and the Treasurer of RELAC, positions he is filling with efficiency and distinction. He is the ideal back-up for Bill de la Garza; they have worked closely together and are committed to the same goals and values. Prior to retirement Ed was a long-time staff member at LACERA, ultimately serving as a Division Chief. He knows the organization, the services it provides to the members and what it takes to get things done.

Ed is the right choice for Alternate Retiree Member.

REMEMBER TO VOTE FOR DIANE, BILL AND ED!

Bulletin

The Board of Supervisors has approved retroactive full reimbursement of Medicare Part B premiums for retired LACERA members enrolled in a LACERA administered Medicare Risk HMO plan or Medicare supplement Plan. This year the county has been reimbursing at last year's rate, \$11.60 less than the 2005 rate; it will now reimburse at the higher rate retroactive to January 1.

Regional Activities

By Alan Chancellor



Large Numbers Enjoy RELAC'S Big Event in Las Vegas



As you might recall from my article in our last Newsletter, we had a terrific Regional meeting planned for Las Vegas on March 3rd. The outcome was even better than we had hoped. The turnout was overwhelming; 160

members and guests attended our luncheon meeting at the Palace Station Hotel. Ask anyone who was there and I'm sure you'll get the same positive response.

The speakers, led by Assistant Executive Officer for LACERA Rob Hill, were outstanding and imparted useful and timely information on a variety of issues including our Defined Benefit Plan vs. the governor's proposed Defined Contribution Plan. The event was complemented by an excellent meal and concluded with lots of door prizes. A good time was had by all; in fact, so good that we're beginning to plan for a repeat in 2006. Let me know if you'd be interested in helping to put the event together. Just leave a message with RELAC or e-mail me at Alchance@aol.com.

OUR OTHER REGIONAL ACTIVITIES IN THE WORKS

Lancaster/North County - May 19th- This luncheon-meeting is being organized and hosted by Donna Livermore and the great group of volunteers who always join her in this effort and will be held at the Lancaster Elks' Lodge, 240 E. Avenue K. Come for lots of fun, great food, good humor, and some tall tale telling. All of this for just \$16.00 per person. To make your reservation just complete the form below, enclose your check made payable to Donna Livermore, and mail directly to Donna.

Huntington Beach/Orange County - July 20th - This will be a hosted casual morning meeting with coffee and freshments, running from 9:00 a.m. to 12:00 noon. It will be held at the Huntington Beach Central Library located at 7111 Talbert Avenue, Huntington Beach. That's right, no cost to those members and spouses attending. Because it is a no cost event we must limit attendance to RELAC members and either their spouses

or one guest. Seating is limited so be sure to make your reservation by completing and sending the below form to RELAC by July 8th.

Temecula - October 12th - We are organizing a traditional luncheon-meeting to be held in the area. We hope you'll share the day with many of your Board members as this is sure to be a worthwhile and enjoyable event. We'll be providing more information in coming Newsletters.

As you can see, we're working hard to bring information and activities directly to you, our members. We're looking forward to seeing each of you at one of these really worthwhile and interesting meetings. Join us, you'll be glad you did.

NORTH COUNTY LUNCHEON-MEETING

Thursday, May 19, 2005

Doors Open 11:30 a.m. - Lunch @ 12 noon

Lancaster Elk's Lodge

240 East Avenue K, Lancaster

Name _____

Address _____

Guest(s) _____

#Tickets _____ x\$16.00 each= _____

Deadline is May 12, 2005

Mail this completed form with your check payable directly to:

Donna Livermore

1135 Date Palm Drive

Palmdale, Ca 93551

HUNTINGTON BEACH/ORANGE COUNTY

Wednesday, July 20, 2005

9:00 a.m. - 12 Noon

Huntington Beach Central Library

7111 Talbert Avenue, Huntington Beach

Name _____

Address _____

Spouse or One Guest _____

Deadline is July 8th

Mail this completed form to RELAC

1000 S. Fremont Avenue, Unit 15

Alhambra, Ca 91803-8802

For Office Use:

Date Rec. _____ Amt \$ _____ Check # _____

* Note: You will not receive a ticket in the mail for either event. Your reservation will be checked at the door.

Southland

CREDIT UNION

Bringing Your Dreams To Realitysm

BRANCHES

Downey

8545 Florence Ave.
Downey, CA 90240

Los Alamitos

10701 Los Alamitos Blvd.
Los Alamitos, CA 90720

Los Angeles

300 N. Los Angeles St., Ste. 2044
Los Angeles, CA 90012

PHONE NUMBERS

562.862.6831
800.426.1917

QUICKLINE

888.426.1918

FAX NUMBERS

General 562.861.4562
Loans 562.596.9865

WEB SITE

www.SouthlandCU.org

Southland Products and Services

- Savings & Checking w/ Visa[®] Debit Card
- Money Market & Certificates of Deposit
- Individual Retirement Accounts
- New & Used Vehicle Loans
- Recreational Vehicle Loans
- First Mortgage & Home Equity Loans
- Home Equity Lines of Credit
- No-Fee Southland eServices:
eBranch, ePay, eStatements, and eLoans
- Direct Deposit
- Overdraft Protection
- Automatic Transfer of Loan Payments
- Quickline – Automated Telephone Teller

Arrive In Style...

Dear RELAC Members,

Join Southland Credit Union and participating Credit Union Direct Lending[®] (CUDL) Dealerships for a 3-Day Sale Event, May 13-15, 2005. Visit a participating CUDL Dealer and save!

LOOK FOR THIS BRAND



CUDL Dealership Locator:
www.cudirect.com



**Superior Chrysler Jeep
of City of Industry**
242 N Hacienda Blvd.
City of Industry
626.968.1515



Santa Margarita Ford
30031 Santa Margarita Pkwy.
Rancho Santa Margarita
949.459.6800



Browning Mazda
18827 Studebaker Rd.
Cerritos
562.924.1414



**Superior Nissan
of Carson**
1505 E. 223rd St.
Carson
310.835.1178

Arrive in style ... join us for our 3-Day Car Sale Event! Bring this advertisement to a participating CUDL dealership and receive a 1.00% annual percentage rate discount at the time of purchase when you finance with Southland. CUDL Dealers can approve your Southland Vehicle Loan right at the dealership, saving you time and money.

As a RELAC Member, you can join Southland Credit Union. Call a Financial Service Representative at 800.426.1917, visit www.SouthlandCU.org or stop by your local branch for details.

Southland Credit Union would like to take this opportunity to wish you and your family good health and financial well-being.

Southland Receive **1.00%** Annual Percentage Rate Discount*

Bring this coupon to a participating CUDL dealership, purchase a new or used vehicle, finance your Vehicle Loan with Southland Credit Union, and we'll lower your rate by 1.00%APR.

CUDL Dealers: Enter code 100 in comment section when entering loan application for funding in CUDL system to receive reduced rate.

*APR = Annual Percentage Rate. Vehicle loans are subject to credit approval. Rates as low as 3.99% APR. This low rate includes a rate discount of 0.25% for automatic payments from a Southland CU Checking Account and a 1.00% APR discount with coupon. Your rate may be higher based upon your credit history. Coupon offer valid May 13-22, 2005. Rates quoted as of 4-1-05. Rates, terms, and conditions subject to change without notice. 1.00% APR discount is not available without coupon.

This advertisement was developed by Southland and approved by RELAC in order to defray the cost of the printing and distribution of this newsletter and as a service to RELAC members.



PROCEDURES FOR NOMINATION & ELECTION TO THE RELAC BOARD OF DIRECTORS

By Ed Morris

Chair, Nominations & Elections Committee

If you are interested in serving on the RELAC Board, you may apply by writing at any time to RELAC at the address at the end of this article. Your letter should briefly explain your interest and describe the experience and education that enhance your qualifications. After an interview by the Nominations and Elections Committee, you could be considered and added to the current list of interested candidates.

At the June meeting of the Board of Directors, the Nominations and Elections Committee shall present a list of all interested candidates to the Board who shall select a slate of five (5) nominees for Director who will serve 3 year terms beginning January 2006.

If you are not on the slate and are a regular member of RELAC, or honorary member who was formerly a regular member, you may be nominated for a Director position by filing a signed petition of not less than (25) members which must be received at the RELAC office not later than July 31. (If the Bylaws are approved which changes the date of receiving a petition) Petition forms may be secured from the RELAC office at any time. A letter of acceptance from the nominee must accompany the petition. THERE SHALL BE NO OTHER METHOD OF NOMINATION. (Article VI., RELAC By-Laws).

If voting is necessary due to petitions filed, ballots will be distributed to all members with the September/October issue of the Newsletter. Ballots will be returned to a designated independent party, which shall conduct the count and report the results to RELAC and directly to each candidate. Results will be announced at the October General Membership Meeting at Temecula on October 12, 2005 and published in the November/December Newsletter.

Please write to: RELAC

Nominations and Elections Committee
1000 So. Fremont Avenue, Unit 15
Alhambra, CA 91803-8802
Attention: Ed Morris, Chair

PROPOSED BY-LAWS CHANGES TO RESULT IN EARLIER ELECTIONS

The RELAC Board of Directors has endorsed conducting the election for Directors for the RELAC Board earlier in the year. Holding this election earlier will allow the Board to select the officers for the next year in October instead of December. The new President could then start his/her term on a timely basis.

This proposed change will require By-law amendments which shall be presented to the membership for a vote at the June 16, 2005 General Membership Meeting in Diamond Bar. The changes are as follows:

Italic(remove) **Bold (Add)**

Article VI Nominations and Elections

Section 1-Nominating Procedure

(b) At the *July* **May** meeting of the Board of Directors the Nominations and Elections Procedures Committee shall present a list of all applicants for Director of the Board of Directors, which shall select a slate of five (5) nominees for Director.

(c) The Nominations and Elections Procedures Committee shall present the slate of five (5) nominees for Director to the *August* **June** General Membership Meeting.

Section 2-Other Nominations

(a) Nominations for Directors may be filed by a signed petition not less than (25) members, which petition must be submitted to the RELAC office not later than *September 30* **July 31**. A letter of acceptance from the nominee must accompany the petition.

(c) Prior to the annual election the Newsletter shall print election information of up to 100 words on all candidates-if received by *September 30* **July 31** notice of this provision and of the due date for submission shall be published in advance in the Newsletter

Section 3 - Election Procedures

(b) At the time of election, if there have been no petition nominations, the election of the slate will be announced in the *November/December* **September/October** issue of the Newsletter and the President will make the same announcement at the *December* **October** General membership Meeting.

(d) If voting is by ballot, ballots will be distributed to all members in the *November/December* **September/October** issue of the Newsletter. The same issue will contain information on all candidates if received in accordance with established procedures. Ballots will be returned to a designated independent party, which shall conduct the count and report the results to RELAC and directly to each candidate. Results will be published in *January/February* **November/December** Newsletter. Election shall be determined by plurality basis.

(f) A summary of this Article VI will be published in the *July/August* **May/June** Newsletter

Continued on page 14

Golf News



NEXT TOURNAMENT

Monday, June 6, 2005

Los Amigos Golf Course

2005 Golf Tournament Schedule

June 6
Los Amigos

August 1
Los Verdes

October 3
Lakewood

December 6
Whittier Narrows



RELAC GOLF ENTRY FORM
LOS AMIGOS GOLF COURSE
7295 Quill Drive Drive
Downey, CA 90242

MONDAY, JUNE 6, 2005

PLEASE PRINT

(1) NAME _____
ADDRESS _____
CITY _____ ZIP _____ PHONE _____

FEES - \$31.00 PER GOLFER- CART EXTRA

If possible, place me in a foursome with below listed golfers.

Addresses of all golfers MUST be included. If possible, we would prefer an Early _____ Late _____ starting time.

Please Print

(2) NAME _____
ADDRESS _____
CITY _____ ZIP _____

(3) NAME _____
ADDRESS _____
CITY _____ ZIP _____

(4) NAME _____
ADDRESS _____
CITY _____ ZIP _____

NOTE: Only ONE GUEST per member. Enclose check for _____ golfers @ \$31 per golfer. Make Check payable to RELAC GOLF. Mail entry to RELAC GOLF, 1000 So.Fremont Ave, Unit 15, Alhambra, CA. 91803-8802.

ENTRY DEADLINE - MAY 23, 2005

ALL CHECKS MUST BE IN RELAC OFFICE

FOR OFFICE USE:

DATE REC _____ AMOUNT \$ _____ CHECK NO _____

LA MIRADA GOLF TOURNAMENT

By Ed and Cecile Barrios

Perfect weather greeted sixty-nine players at RELAC's April 5, 2005 golf tournament with great participation by women players. George Sims had a great day with the low gross, first in Flight 'A', and two closest to pins.

See you at Los Amigos on June 6, 2005.

Flight "A" (0-19 Handicap)

1st Sims, George (59)
2nd Diaz, Manuel (62)
3rd Sexton, Les (65)

Flight "B" (20-25 Handicap)

1st Barrera, Ernie (57)
2nd Morales, Robert (63)
3rd Villasenor, Henry (65) *

Flight "C" (26-36 Handicap)

1st Sudduth, Bob (60)
2nd Robinson, Matt (63)*
3rd Fukumoto, Yosh (63)*

Flight "D" (Calloway)

1st Smith, Al (72)
2nd San Antonio, Don (73) *
3rd Misaka, Ted (73)*

Ladies "All"

1st DeBie, Charlene (64)
2nd Signer, Nancy (75)

Closest to the Pin on 3 Pars

Mosley, Sanford on #3
Bontrager, Emery on #5
Sims, George on #9
Sims, George on #11
Martinez, Luis on #13
Malmfeldt, Ron on #17

*indicates tie broken by lower handicap.

MARK YOUR CALENDARS

RELAC NEWSLETTER
Vol 40 - May/June 2005
Number 3
Retired Employees of
Los Angeles County
1000 S. Fremont Ave. Unit 15
Alhambra, CA 91803-8802
(626) 308-0532
(800) 537-3522
Fax (626) 308-2901
E-mail: admin@relac.org

BOARD OF DIRECTORS

President:
Diane Sandoval
1st Vice President:
Edward C. Morris
2nd Vice President:
Domingo Delgado
Secretary:
Mary Lou Bangar
Treasurer:
Edward C. Morris
Past President:
Raymond R. Guyovich

MEMBERS

Harriet Baker
Alan Chancellor
Bill de la Garza
Sol Fingold
John F. Fleming
Martin Golds
James A. Harrigan
Dave E. Kalinge
Fred J. Miller
Greg Walia

MEMBER EMERITUS

Norman S. Johnson

Editor: Martin Golds
Copyright (c) 2005 by RELAC
This information presented in your RELAC Newsletter is believed to be from reliable sources. However, no responsibility is assumed by RELAC or the writers for inaccuracies in the articles as published.

OFFICE HOURS

9:00am - Noon &
1:00pm - 4:00pm
Monday - Friday
Closed Saturday, Sunday &
Public Holidays

Investments Board

By Diane Sandoval



DEFINED CONTRIBUTION PLAN THREATENS RETIREE HEALTH, STAR COLA BENEFITS

Since the following article was written Governor Schwarzenegger has pulled back from his campaign to replace public employee defined contribution plans. He recognized that this ballot proposition is flawed, citing the failure to provide for disability and death benefits for safety personnel. He stated, however, that he intends to pursue his basic "reforms" (i.e. put an end to defined benefit plans) with some modifications. We can expect to see the modified plan on the ballot next year; therefore most of the concerns discussed below are still highly relevant.

At a recent CRCEA Conference, RELAC and its member associations were asked to provide you with sufficient information to assist you in your discussions with your relatives, friends and neighbors regarding the defined benefit/defined contribution controversy.

Many of you may believe that this change will not affect you since your pension benefits cannot be taken away. While this is true for your actual retirement pay and COLA benefits, it is not true for your medical and dental benefits and future STAR COLA increases.

Currently, the County of Los Angeles subsidizes your medical and dental premiums on a "pay as you go" basis. This is not a vested benefit. In other words, if necessary in order to balance their budget, the County could decide to stop paying for our health care costs. STAR COLA benefits are paid from the Fund's excess earnings.

Remember that LACERA is a long-term investor. Currently, the Fund is destined to go on forever because new hires are placed in the current defined benefit plans. Once they become members they start contributing at the current contribution rates thus generating new money for LACERA to invest. Los Angeles County also contributes a percentage of the employee's pay on a monthly basis. That money is also invested by LACERA.

As future employees are placed in a defined contribution plan, LACERA will receive less money to invest. LACERA will be forced to invest in more secure, liquid investments in order to get the cash needed to cover pension and administrative costs. These investments will pay less and thus reduce the investment income.

According to several publications I've read, during the past ten years approximately 70 percent of income to fund pensions came from investment earnings. With investment earnings reduced the County will be required to make up the difference for those already retired and for older employees who will be retiring in the near future. As the County's retirement contributions increase it will leave less money in the General Fund to pay for our medical and dental benefits and for essential County services. And there will be no excess earnings for STAR COLA.

Discussion Points:

- * Nearly 80 percent of increases in employer rates between the years of 2002-2004 are due to the two-year downturn in the economy.
- * The average pension is small. In addition, every retiree does not retire on a disability retirement nor do they get \$160,000 per year in retirement benefits. At LACERA as of June 30, 2004, the average annual allowance of a retiree is \$31,629.
- * Defined contribution plans are more costly. Administrative costs for a defined benefit plan from 1997 to 2003 were approximately 0.18 percent of assets. The annual cost of a defined contribution plan is 2 percent of assets.
- * Los Angeles County will have to bear the "Start Up" costs of a defined contribution plan. LACERA's administrative costs are paid from the investment earnings of the Portfolio.
- * Los Angeles County no longer will have the opportunity to use future investment returns to stabilize retirement costs, relieving taxpayers from some of the burden of funding pensions.

Continued on page 8

MODEL LETTER TO THE GOVERNOR

A number of our readers have asked that the Newsletter provide a suggested letter that can be sent to the Governor and to state legislators. The suggested letter which follows is only for the purpose of providing general ideas. The best letter is one that is each writer's individual expression of his/her concerns. You can adapt your letter to be directed to your state senator or assembly member, or copies of a letter to the Governor could be sent to legislators. The sooner that the politicians hear our views the easier it will be for them to change direction.

Dear Governor Schwarzenegger,

I appreciate that you have recognized flaws in your proposal to change the character of public pension plans in California. But the flaws go much deeper than failure to provide for disability and death benefits.

As a retired county employee I am aware that re-directing funds away from my retirement system to private accounts will greatly reduce the ability of the retirement system to earn returns on investments. Much of my pension benefits are paid for by investment returns. The government sponsor will be required to make up the difference which will in turn jeopardize my health insurance benefits and cost-of-living adjustments.

Any needed reforms in public employee retirement systems can be achieved without destroying them. The costs of switching to defined contribution plans will be too high for government sponsors as well as for those who are retired and those active employees who are looking toward retirement.

I urge you to reconsider your goal of switching to defined contribution retirement plans.

Sincerely,

Note: You can, of course, choose to expand upon the issue addressed above or to deal with any of the other issues discussed in Diane Sandoval's nearby article.



HOLLYWOOD PARK FOURTH RELAC DAY AT THE RACES

By Greg Walia

Hello, my fellow Retirees and Horse Race Fans, Mark Wednesday, June 22, 2005 on your calendars please!

It's the "FOURTH ANNUAL RELAC DAY AT HOLLYWOOD PARK" event. We will meet in the "Finish Line Café". Folks, this location has an outstanding view of the beautiful racetrack. And most of all, for your luncheon pleasure the "All American Grill" menu selection will be offered...a delicious selection of food items.

First race begins at 1:00 p.m.

As in the past, your ticket will have a stub for entry plus a second stub for your lunch. Address and directions to the racetrack are printed on the back of your ticket. A race will be named in RELAC's honor and eight RELAC members will be randomly selected to have their picture taken with the winning horse and jockey.

Admission price including lunch is only \$25.00 per person. Self parking is free. Valet parking is \$8.00 per car.

RELAC DAY AT THE RACES

Hollywood Park Race Track
Wednesday, June 22, 2005

Name: _____
 Address: _____
 City: _____ State: _____ Zip: _____
 Telephone (____) _____
 No. of tickets _____ @ \$25.00 ea. = \$ _____
 TOTAL \$ _____

Enclose a check (no cash please) for your total payable to RELAC and mail to:

RELAC
1000 S. Fremont Ave., Unit 15
Alhambra, CA 91803-8802

DEADLINE for ordering tickets: May 31, 2005
 Tickets will be mailed to you by June 10
 For Office Use:
 Date: _____ Amt: _____ Ck#: _____

Continued from page 7

- * In a defined contribution plan; Firefighters and Safety personnel would no longer have disability or death benefits, making it difficult for the County to recruit individuals to perform these high risk jobs. More importantly, safety personnel hired under the defined contribution plan would be hesitant to risk injury or death in performing their duties, thereby increasing our risk.
- * Defined contribution plans would encourage older, more expensive workers to continue working longer, rather than retire. The performance of the markets would have a significant influence on when people retire.
- * Employees taking money out of the System will drain the fund leaving taxpayers with the same pension obligations but less money to fulfill them.

If I have alarmed you I apologize. However, it is necessary that you grasp the severity of the threat that lies before us. Please join RELAC and CRCEA by reaching out to your relatives, friends and neighbors to make sure they know the true facts.

FOR SALE

Motor Home: Chevrolet, Class C, 2000 Tioga, 29 Ft., roof a/c, monitor panel, generator, awning, hydraulic jacks, hitch, TV antenna, microwave, refrig., sleeps 6-7, dinette, sofa, separate bedroom, queen bed, separate shower, separate bathroom, only 6,000 miles, \$38,000. Call (909) 623-7186.

Custom Home: New 2200 sq. ft. home on 5 acres at 6300 ft. Pinedale, AZ. Gourmet kitchen, cellar, 2 master suites, loft and oversized 2-car garage. Horses OK. Priced at \$309,000. Call (928) 739-4301 - to view pictures via e-mail.

Treadmill - Best Offer. Has distance, time, calories, grade & elevation switch. Contact Ted (626) 576-0422.

Eternal Valley, Newhall: Garden of Serenity, Grave C & D, Plot 104. Value \$2595 each or both for \$5000, plus transfer fee. Call (970)241-0848.

For Sale Ladies Shoes: 15 pairs - size 6 1/2 Medium. Brand new & near new. Top designer brands-Vaneli, Via Spaga, etc. Flats & wedge heels. \$125 takes all. Call Laura (760) 202-6362.

Thomasville Dining Room Set: Table, plus 2 leaves, 4 chairs. China Closet. 5-piece Bedroom Suit (Burl) Gold Trimmed. Complete bed. Excellent condition. Cashier check. Call (310) 638-6786.

Forest Lawn Mausoleum, Long Beach: 6 x 6 deluxe, eye level Crypt. Will sacrifice. Call collect Beatrice (928) 680-0608.

Timeshare for sale: 2-bedroom. Sam Rayburn, TX. \$2500/OBO. Call after 6 PM (310) 644-4743.

Inglewood Park Cemetery: Manchester Garden Mausoleum, Chapel of Unity, Tier 7 Double. Value \$6895. Sell \$5795. Call (760) 241-4211 or (760) 951-4681. Email: jamesvict8@aol.com.

Retirement Board

By Bill de la Garza

Your Elected Retirement Board Trustee



We will continue to keep you apprised. Until next time and as customary, I leave you with this thought:

*A phone is good.
But you can re-read a letter.
Pam Brown*

RELAC & FIREWORKS NIGHT AT DODGER STADIUM

It is time to think baseball for the year 2005 between the Los Angeles Dodgers and the Arizona Diamondbacks. The game will take place on Sunday, July 3, 2005 at 6:10 p.m. at Dodger Stadium. The price of the tickets is \$11.00 each in the reserved section on the first base side. This is the game where the most spectacular fireworks ever will take place. So, don't miss this great event. We ordered 300 seats in the reserved section. Order your tickets early!

BASEBALL TICKETS

Game Starts at 6:10 P.M.
Sunday, July 3, 2005

DODGERS VS. DIAMONDBACKS

Name _____
Address _____
City _____ St _____ Zip _____
Phone (____) _____

No. of Tickets _____ @ \$ 11.00 each = \$ _____

TOTAL ENCLOSED \$ _____

Requests for tickets MUST be received by
Friday, June 17, 2005

Make checks payable to:

RELAC BASEBALL
1000 So. Fremont Ave., Unit 15
Alhambra, CA 91803-8802

Enclose this coupon along with your check.

For Office Use:

Date Rec. _____ Amt \$ _____ Check # _____

It's Time to Protect What We Have

Dear Friends,
2005 has been a bad year for California active and retired public employees who belong to a defined benefit plan. It started by a conservative California Assemblyman from Northridge initiating legislation that would change public pensions from Defined Benefit Plans to Defined Contribution plans. When he could not gather support from his fellow legislators, he recruited Governor Arnold Schwarzenegger to champion his cause. They were bold enough to tell the legislators and government officials, "if you will not support our plan, we will take this issue directly to the people in the form of a ballot initiative". This started all the negative pot shots, untruths and misinformation that have been directed at public employee pension plans. Following the Governor's lead, it has been somewhat fashionable to blame public employee pension plans for all the ills of State, County, and City Government.

A positive result from the ballot initiative is that it created a strong unified coalition to effectively organize and develop an objective plan to fight the ballot initiative. To my knowledge this is the first time all public employees including policeman, fireman, doctors, nurses, school teachers, administrators, public employee unions, public utility workers, retirees and many other public sector workers have united together for the single purpose of defeating the initiative.

Another plus is that the coalition has elected to present both sides of the issue by publishing factual information to the voting public. Emotional appeals mean nothing. The public wants to know the pros and cons of the issue so that they can make an intelligent decision.

I have just learned that the Governor has announced that pensions will not be on the special election ballot. He is making clarifications to make it crystal clear the disabled changes are not part of his proposal. He further announced that he will place a new initiative for circulation. It will be placed on the June, 2006 ballot unless there is a legislative fix. He said he is willing to meet with the stakeholders and legislative leaders.

The fact that he is willing to meet and discuss pension reform is considered a positive step. Let's not let our guards down because we are not out of the woods. Through the coalition we have shown our strength in numbers. Let's continue to do our due diligence.

Letters To The Editor



Thank you for your publication. I still recognize names so there are "oldies" around like me. I travel a lot and like to read about other retiree travels for recommendations and ideas.

*Barbara Dennerline
LaCanada, CA*

Barbara. The Newsletter always welcomes reports from members about interesting travel. You may want to share your own travel experiences with our readers. - Editor

Thank You for my birthday card!!!!...and wish you a Happy Valentine's Day!!! Old folks are worth a FORTUNE.....

(Silver) in their hair
(Gold) in their teeth
(Stones) in their kidneys
(Lead) in their feet
(Gas) in their stomach
*Lucille B. Robinson
Los Angeles, CA*

It was a delightful surprise to receive your check for \$25.00 for being a Valentine Day winner. Thank you so much!

*Yukiko Nagano
Los Angeles, CA*

I was very happy and excited to win the Valentine Day drawing. Thank you so much. I really enjoy the newsletter.

*Alberta O'Glesby
Altadena, CA*

I thank you very sincerely for your congratulations and the check for \$25.00 as a winner in the "Valentine Drawing." Working for the Los Angeles County Department of Mental Health was an enjoyable & educational experience which I will never forget. I look forward to receiving and reading the news bulletin I receive regularly and I am happy to be a member of RELAC.

*Irene F. Marquez
El Paso, TX*

Thank you, thank you, thank you. I am so excited I won one of the prizes for the Valentine drawing. I wanted to jump up and down, but I was afraid I'd hurt my knees.

*Trini Gomez
Yorba Linda, CA*

Thank you for the post Valentine Day gift of a \$25 check. What a happy surprise!

*Ken Pavlick
Ft. Lauderdale, FL*

Mahalo! For the astounding greeting that was sent to me: Congratulations, "You are a winner in the Valentine Drawing." Mahalo is an expressive way of saying thank you in Hawaiian. The \$25 will offset a travel ticket loss which was non-refundable and no change of dates allowed. And more, a hearty thank you for the first-ever RELAC Regional meeting in Las Vegas that was held at the Palace Station Hotel. The program presentation provided quite a wealth of information and it made me gratified to be a RELAC member. Thank you for having the keynote speaker Mr. Rob Hill from LACERA. Thank

you for the affordable block of room rates; helping me to earn flight credits; and finally, to have spent my \$\$ wisely while having a great time with the menu choices that were plentiful.

*Ron Jung
Los Angeles, CA*

Thank you and my luck star for the Valentine Drawing. I always enjoy reading the newsletter; you keep us well informed and also thank you for the good work.

*Teresa Vega
Los Angeles, CA*

My thanks to you for so much; for keeping myself informed and for the annual pocket calendar-I can't imagine life without it. There is so much else that I thank you for but today I'm writing with special thanks for the most welcome Valentine's Day check. Much appreciated! Good luck to each of you in your personal and group endeavors

*Louise M. Hays
Los Angeles, CA*

Thank you very much for the prize in the Valentine Drawing. I wish also to thank you all for the things you do for all of our retirees.

*Joseph P. Getzfread
Oceanside, CA*



NEWS FROM LACERA ...

By Jeff Shevlowitz

Retirement Benefits Specialist

LACERA-Sponsored Health Care Benefits Program and You

Insurance, whether car, fire, theft, or anything else, is one of those things that you pay for in hopes of never having to use it. Your health care insurance is no different. And knowing that you have the best coverage (paid for by you and/or the County) means that should you ever need to use it, you can be confident that you're in good hands.

There are lots of resources for you, should you have any questions about your health care. For questions regarding the LACERA-sponsored Long Term Care Program, call MetLife at 800-207-9883. For questions about any LACERA-sponsored health insurance plan, including dental and vision insurance, call LACERA at 800-786-6464 and press "1" to be connected to the Retiree Health Care Division. If you prefer, you can also email your insurance questions or concerns to healthcare@lacera.com. Whether you call or send an email, you will be assisted by one of our knowledgeable specialists with a prompt response.

Currently, the Retiree Health Care division handles between 800 to 1000 calls each week, accounting for about 22%-25% of the total calls LACERA receives.

Call LACERA if you need enrollment forms, information, clarification of our administrative rules, or assistance with other matters concerning the insurance carriers. If you need booklets, claim forms, ID cards and eligibility verification, please contact your insurance carrier directly.

Members with access to the internet can go to www.lacera.com 24 hours a day, seven days a week, and visit the Health Care section for current updates and new information. You'll find information concerning everything from Medicare to COBRA, as well as a list of the answers to the most Frequently Asked Questions (FAQs).

Our insurance specialists are looking forward to hearing from you and keeping you up to date with the information you need for your health plans through LACERA.

IDENTITY THEFT IS HOT TOPIC AT NORTHRIDGE MEETING



Ed Fox, CEO of Southland Credit Union, expounding on the prevention of identity theft to a full house at the General Membership Meeting in Northridge

(Photo by Sol Fingold)

A full house of RELAC members showed a high degree of interest in identity theft, the featured topic at the March 16 General Membership meeting in Northridge. The room was full and the audience had numerous questions for the speaker, Southland Credit Union President/CEO Edward Fox.

Fox pointed out that identity theft, while affecting only about 3.5% of the US population, is the fastest growing crime. When it happens to you it is a very serious matter and very difficult. He offered many suggestions on how to avoid becoming a victim, such as not carrying a Social Security card in your wallet, shredding papers which have identifying information, and having a locking mailbox. He stressed that requests for Social Security and driver's license numbers should be refused except when there is a clear necessity, as when needed by an employer for tax purposes.

The volume of useful information that Fox presented, the size of the audience and the obvious intensity of their interest in the subject made for a very successful meeting. Detailed information about the next General Membership Meeting, on June 16 in Diamond Bar, may be found on this Newsletter's back page.

RELAC SUPPORTS RUSSIN AND BROOKS TO REPRESENT ACTIVE EMPLOYEES

The RELAC Board has voted to support the candidacies of **Simon S. Russin** for the LACERA Board of Investments and **Brian C. Brooks** for the Board of Retirement. Each is running to represent active employees on the respective Boards. Both have proved themselves to be staunch protectors of the County retirement system and both have been consistently supportive of retiree interests. Contact your friends who are still active employees and ask them to vote for Russin and Brooks.

IN MEMORIAM

FEBRUARY/MARCH 2005

This list includes retired employees, both RELAC members and non-members

*Denotes RELAC members

AIR POLLUTION

Mills, John L. *
Reid, Ernest *

ASSESSOR

Baird, Jane M.
Christian, Alan K. *
Tinoco, Norma B. *
Van Hehert, Louis G. *

AUD/CONT

Love, Beth *
Wallin, Leone C. *

BOARD OF SUPERVISORS

Ball, Fred D.
Powers, Hazel M. *

CHILD SUPP SVCS

Love, Mary L.

CHILD SVCS

Maso, William J. *
Melican, Thomas *
Wade, Elbie W. *
Williams, Fredericka D. *

COM SR CITIZENS

Overman, Catherine *

COUNTY CLERK

Kanuck, Winifred M. *
Murstein, Isidore L. *

DATA PROCESSING

Sanchez, Frank F. *

DIETARY

Barrett, Marie *

DIST ATTY

Kaplan, Donald J. *
Neal, Roland R. *
Wilson, John *

DPSS

Burrell, Katherine A.
Comegys, Marshall D.
Corbin, Marie
Davis, Nancy H.
Day, Dorothy M. *
Fordis, Fran R.
Garland, Irvin M. *
Harady, Albaerta B. *
Ihrke, Alma H. *
Kocker, Mitsuye*
Latimer, Vera J. *

Obregon, Beatrice *
Prentice, Clinton G.
Roth, Lloyd A. *
Shepard, Evelyn A. *
Stubblefield, Estelle *
Tauli, Thomas M.
Weiss, Edith *
Willis, Jim

ENGINEER

Parsons, Opal L. *

FIRE

Adams, William G. *
Bradish, Donald H. *
Duckworth, Robert B. *
Halsey Jr., Homer M. *
Houston, Rosemae *

FLOOD CONTROL

Litchfield, Faye *

HARBOR/UCLA

Arnold, Rosie
Grant, James W. *
Niller, Julia L. *

HI DESERT HLT SCS

Miller, Leonard

HLTH PLAN ADMIN

Ogata, Jack M.

HLTH SVCS

Foy, Jean E. *
Peterson, Shirley *
Pierce, Evelyn J. *

HOUSEKEEPER

Brocery, Shirley T. *

HOSPITAL

Heimgartner, Louise P. *

INTERNAL SVCS

Dent, Christine L.
Jones, Johnnie D. *
Jones, Rochelle A. *
Provencio, Eugene
Shelton, Robert
Smith, Leo E.
Whitley, Forrest T. *

JUV CT HLTH SVCS

Schnatterly, Virginia

KING/ DREW

Morhaim, Victor
Triggs, Lillian *

LAC/USC

Banks, Emma J.
Blackburn, Mary
Brown, Georgia M. *
Cline, Gertrude W. *
Cobbley, Dorothy B. *
Elkin, Lola *
Euteneuer, Leroy A. *
Gonzalez, Maria T.
Johnson, Novella *
Olilang, Elnora B.
Ortiz, Jennie *
Randolph, Martin
Rosborough, Ruth M
Sheffer, Helene *
Sturgis, Neil M.
Zeen, Gladys L. *

MARSHAL

Fawber, Noel M. *

MECH

Bailey, Richard L. *
Huffman, Loal E. *
Mills, Ronald L.

MED CENTER SVCS

Rovnick, Sydelle *

MED EXAM-CORONER

Jackson, Lillian L. *

MEN HLTH

Cashen, Regina B. *
Covington, Carrie M. *
De Cayette, Reginald

METRO SO CHC HLTH CTR

Sison, Alfredo

MUNICIPAL CTS

Bennyworth, Martin F. * (L.A.)
Pugsley, George L. (Long Beach)
Swanson, Elaine * (Glendale)

MUSEUM OF ART

Briones, Fernando

OFFICE OF SECURITY

Gandhi, Shirish C.

OLIVE VIEW MED CTR

Muetzel, Gloria L.
Rickman, Doris *
Smith, Bessie K.

IN MEMORIAM

FEBRUARY/MARCH 2005

This list includes retired employees, both RELAC members and non-members

*Denotes RELAC members

PRKS & REC

Brown, Cecile L.
Enos, Robert L.
King, Lester A.
Mumford, Richard H.
Zamora, Daniel V. *

PROBATION

Collins, Allen *
Kehof, John J. *
Lewis, Thelma L. *
Lynch, Robert M.
Stas, William *
Trejo, Bernard L.

PUBLIC DEFENDER

Lessinger, Richard M. *
Shacklett, Clark E. *

PUBLIC HLTH PROG

Butler, Raymond E. *
Gates, Frances
Reyes, Aurora

PUBLIC LIBRARY

Basto Connelly,
Madalena M.*
Byers, Thelma

PUBLIC WORKS

Bates III, Eugene T. *
Guillen, Miguel V.
Huerta, Bernabe E. *
Masuda, George J.
Merrill, John F.
Razo, Juan E.
Thurlow, Woodrow E. *

PURCH & STORES

Nakamura, George O. *

RANCHO/LOS AMIGOS

Erickson, Eugene R. *
Hardesty, Martha L. *
Koenke, Thelma L. *
McCurley, Vesta L. *
Wade, Mattie B.

ROAD

Alexander, Charles L. *
Melton, Jack *

HERIFF

Aaron, Leroy *
Alexander, Donald F. *
Baer, Walter O. *
Bridges, Frank W. *

Burt, Patricia L.
Hartline, Bruce M.
Mc Manus, Donald G. *
Oblek, Joseph F.
Reid, Joseph M.
Searfoss, Dean H. *
Sheldon, Derrell
Sparks, James G. *
Swan, Dolores J. *
Walsh, George S. *
Widgins, Laurence T.
Yates, Donald

SUP CT/CO CLK

Hazley, Betty M *

SUP CT OFFICERS

Boffola, Olivia
Braggs, James A. *
Raiford, Karen *

TREAS/TAX COLLECTOR

Bondad, Proceso B.
Pfeifer, George A.
Rauzon, Lou G. *

DEPT NOT DESIGNATED

Adams, Maggie J.
Bamford, Gerald E.
Baudour, Tatiana
Bent, Mark
Bischoff, Margaret S.
Bledsoe, Earl F.
Blumenethal, Ozella
Bouvies, Helen M.
Buck, Bernice M.
Cain, Juaniga
Canton, Walter J.
Carolan, John A.
Chudnow, Madelyn
Coats, Frederick L.
Conviser, Pauline D.
Cosey, Gwendolyn M.
Crawford, George L.
Cuber, Charles L.
Cudmore, Muriel D.
Del Castillo, Benjamin R.
Dixon, Mason M.
Draine, John D.
Du Conge, Bernice B.
Dugas, Donald E.
Elliott, Joy L.

Emer, Leon S.
Floyd, Lucille D.
Fraser, Clara D.
Friedman, Dorothy
Glavin, Ralph H.
Haas, Lucille R.
Henderson, Virginia
Hernandez, Alfred B.
Holland, Walter V. *
Krescent, Kenneth
Kreutner, Elva E. *
Lamug, Betty E.
Lent, Marian G.
Lindeman, Margaret
Lewis, Blanche M.
McCurdy, Robert J.
Miller, Bernard J.
Oien, Henry T.
Ouellette, Lordman *
Palm, Cecelia
Powers, David B.
Pulley, Wayne M.
Pumphrey, Annie
Rezac, Robin J.
Ritchie, Louiise R.
Roth, Louise A.
Ruzek, Gertrude V.
Salcido, Joe
Sanchez, Aurora
Schwartzberg, Theresa *
Server, Martha J.
Shapiro, Jerome
Smith, Candace B.
Sondergaard, Bernice
Sorgani, Edward E.
Spencer, Warren G.
Stetler, Margaret R.
Striegel, Luwaine V.
Stobaugh, Warren K.
Taylor, Ernest H.
Thompson, Russell E.
Truskinoff, Abe H.
Willeford, Webster D. *
Wilmovsky, Alice
Yeagle, Robert C.

NEW MEMBERS FEBRUARY & MARCH 2005

ASSESSOR

Malmfeldt, Ronald
Sears, Ellen L.

CHIEF ADM OFFICE

Bergstrom, Kathleen
Cannon, Cecilia Hite

CHILD/FAM SVCS.

McElhinney, Elaine B.

DISTRICT ATTORNEY

Horn, Dell P.
Morton, Frankie

DPSS

Baldoz, Mariano M.
Clark, Nora
Richmond, Vicki
Wilkerson, Eleanor

HEALTH INFO. MGMT.

Calhoun, Gussie

HEALTH SERVICES

Burton, Fay M.

HEALTH SERVS/ADM.

Villanueva, Sylvia

KING DREW MED. CTR.

Edwards, Julie A.

PROBATION

Marshall, Ida V.

PUBLIC LIBRARY

Billodeaux, Charles H.

PUBLIC WORKS

Vaicaro, Bart A.

SHERIFF

Boudreau, Gary

DEPT NOT DESIGNATED

Ruiz, Fortunata B.
Halden, Walter



Janell Clifton
Co-Coordinator of RV Club



Ed Clifton
Co-Coordinator of RV Club

RV OUTING NOTES

by Janell Clifton

While in Hemet in March we just had to wait a few minutes and the weather would change from rain to sunshine and back again. But golf was still enjoyed and tours of the nearby wineries or tours of March Air Museum and, of course, some of us went back to the casinos to visit our money that we had left there the last time we were in town. After breakfast on Tuesday we had a business meeting and Earline Dean and Nell Heard came from Fallbrook to help us get started on our quilts for Casa Kids. The Hursts joined us for the first time and they were on pins and needles while waiting for the news of a new grandchild expected any moment.

Thanks to wagon masters Frank and Diane Maestras for doing a good job. Tom and Alice DeMinico were their assistants. If Frank doesn't be careful he may become a prime example of how to be a wagon master.

As this is being read we rver's are in Buellton having a good time. Solvang and surrounding area is so pretty this time of year. From the campground we can walk up to Pea Soup Andersons and enjoy a bowl of soup. Why aren't you enjoying this trip with us? We will be looking for you at our next campout, which will be in Chula Vista in September. That is our biggest group of the year. One of your retired friends from work just may be sitting there waiting for you and your rig.

Coupon for Chula Vista campout will be in July's newsletter. You may call Coordinators Ed and Janell Clifton for information on any future dates (562) 428-3360). We will be looking forward to your calls.

.....
Continue from page 5

As a result of the above Bylaws changes if approved, the Article IV - Officers should be changed accordingly as follows.

Section 1 - Officers

(d) The Board of Directors *for the period of the unexpired term* shall fill vacancies, due to resignation or any other cause.

If vacancy for the unexpired term is more than 6 months the Board will elect a replacement as the next Board Meeting. If vacancy is for less than 6 months the replacement shall be deferred in favor to the next General Election.

**FOLLOWING IS A LIST OF THE
RELAC BOARD OF DIRECTORS MEETINGS
AND GENERAL MEMBERSHIP MEETINGS
FOR THE NEXT SEVERAL MONTHS**

Take particular note of the General Membership Meetings (shaded) that are held at various locations. You are cordially invited to attend. Details on the location and program for the next General Membership Meeting are provided on the back page of this Newsletter. A great deal of important information will be given. The Business Meetings listed all begin at 9:30 a.m. and are held at the RELAC Office which is located at 1000 So. Fremont Avenue, Ste. 0101, Alhambra, CA, Telephone Nos. (626) 308-0532 or toll free (800) 537-3522.

BOARD MEETING

May 26, 2005 (4th Thursday)
RELAC Office

GENERAL MEMBERSHIP MEETING

June 16, 2005 (3rd Thursday)
Diamond Bar Center, Room A
1600 S. Grand Avenue
(In Summeridge Park)
Diamond Bar, California
9:30 a.m. - 12:00 p.m.

BOARD MEETING

June 23, 2005 (4th Thursday)
RELAC Office

BOARD MEETING

July 28, 2005 (4th Thursday)
RELAC Office

BOARD MEETING

August 25, 2005 (4th Thursday)
RELAC Office

GENERAL MEMBERSHIP MEETING

September 14, 2005 (2nd Wednesday)
Cerritos Park East Community Center
13254 East 166th Street
(Located between Shoemaker Avenue and
Carmenita Road)
9:30 a.m. - 12:00 p.m.

BOARD MEETING

September 22, 2005 (4th Thursday)
RELAC Office

Touring With Great Western

626-578-1161 • 800-344-7090

Don't forget to ask for your RELAC discount!

CST# 1016229-40

Branson
September Songs



5 Day Air/Motorcoach Tour

Departs September 12, 2005

Tour Price Per Person

Double:\$999.00 Single:\$1099.00

Tour Price Includes:

- R/T Air LAX/Kansas City • Airport Transfers
- Deluxe Motorcoach Transportation • 4 Nights Hotel Accommodations • 8 Meals: 4 Continental Breakfasts
- 4 Dinners • 3 Evening Shows -3 Morning Shows**
- Branson Sightseeing Tour • Sightseeing and Admissions Per Itinerary • Tax & Baggage Handling

HAWAII



Waikiki Your Way!

6-Day Air/Motorcoach Tour

Departs

September 14, 2005

Tour Price Includes

- Roundtrip Air LAX/Honolulu
- Deluxe Motorcoach Transportation
- 5-Nights Hotel Accommodations
- Buffet Breakfast Daily
- Sightseeing and Admissions Per Itinerary
- Driver's Gratuity
- Tax & Baggage Handling

Dbl. Per Person:

\$849.00

Single price
available upon request.

Irish Adventure

9 Day Air/Land Tour

Departs November 1, 2005

Dublin • 6th Century Glendalough • Killarney • Waterford
Galway • Blarney Castle • Ring of Kerry • Cliffs of Moher

Dbl. Per Person: \$1,649.00 Sgl.: \$1,989.00

TOUR PRICE INCLUDES

- Round trip air LAX/Dublin • 1st class hotels w/private bath/shower for 7 nights
- 13 Meals • Sightseeing by luxury coach • Services of a professional Irish driver guide • Full Irish breakfast daily • 6 dinners including 5 table d'hote dinners- Dinner and Ballads at Doyle's Irish Cabaret • Welcome get-together drink • Tea and scones at an Irish farmhous • Dublin tour with local guide
- Ferry ride across the River Shannon • Visits and admissions to St.Patrick's Cathedral, Dublin Castle, Glendalough Visitor Centre, Waterford Crystal Factory, Blarney Castle, Cliffs of Moher, Foxford Woollen Mills, Drumcliffe Visitor Centre, W.B. Yeats' grave, Bowne Valley Visitor Centre. *plus more.*

General Membership Meeting



Fred Miller
Chair, Program Committee

DIAMOND BAR CENTER - ROOM A

June 16, 2005 (3rd Thursday)

1600 So. Grand Avenue
Diamond Bar, CA 91765

FEATURED SPEAKER

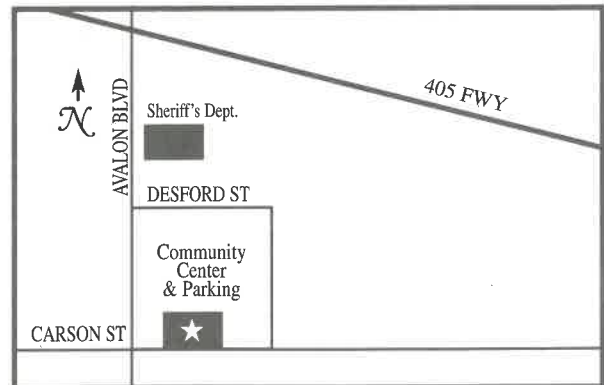
Our speaker will be Ervin N. Fang, M.D. Assistant Chief of Ophthalmology, Southern California Permanente Medical Group, Los Angeles Medical Center. The focus of this presentation is to acquaint the retiree with information about aging changes in the eye, such as cataract and glaucoma. Emphasis will be on promoting general eye health. Come and learn how to preserve your vision.

In addition, there will be information from LACERA & RELAC. There will be a raffle of several valuable prizes. You will need your RELAC Membership Card. Come and Visit with Old Friends & Co-Workers.

9:15 a.m. - Free Coffee, Donuts & Pastries

10:00 a.m. - Meeting Begins

DRIVING DIRECTIONS: Exit the (60) Freeway at Grand Avenue. Drive South to the traffic signal at Diamond Bar Center. Turn left and proceed up the hill to the Center. All parking is on your left. This is a new facility, and you will find it a delightful place for a meeting.



IMPORTANT
Are you moving?
Did you change
your name?

cut out the address portion of
this newsletter; correct
it and mail to:

RELAC

1000 S. Fremont, Unit 15
Alhambra, CA 91803-8802

or

Phone: (800) 537-3522

(CA only)

Phone: 626-308-0532

Fax: 626-308-2901

E-mail:

admin@relac.org

*Note: It is important that you
mail this to RELAC or contact
RELAC by phone as we **DO NOT**
receive your address change
from LACERA*



RETIRED EMPLOYEES
of LOS ANGELES COUNTY
1000 South Fremont Ave. Unit 15
Alhambra, CA 91803-8802

NON-PROFIT
U.S. POSTAGE
PAID
PERMIT #66
PASADENA, CA