

## President's Message

by Greg Walia

These past two months have been quite busy at RELAC. Here are some highlights of what we have been up to:

### Planning Seminar

At its annual Board of Directors' planning seminar in February, several important recommendations were presented for consideration. These recommendations, if adopted by the Board at its future regular Business meetings, will result in increased operational efficiency, cost reductions, and improved service level to our members. Changes to RELAC bylaws, if necessary, will be presented for adoption at General Membership meetings.

### Las Vegas Regional Meeting

Liza Mazzocco, LACERA Chief Investment Officer, was keynote speaker at RELAC's fifth Regional meeting in Las Vegas on March 19, 2009. To the delight and great relief of over 140 members and guests, Liza assured that County retirees will continue to receive their pension benefits, as mandated by law, despite ongoing financial uncertainty. Bill de la Garza presented his report on health benefits for retirees and urged members to read his articles on the topic in RELAC Newsletter. My thanks to Board members Domingo Delgado, Bill de la Garza, Ida Ramos, Marianne Reich for their invaluable help at the event. A special thanks to Diane Sandoval and the entire Regional Support Committee for planning and organizing the meeting. And let's not forget to thank Gil Sandoval, our Golf Director, for organizing the golf tournament. Oh yes, and a RELAC member, Charles Kimura, donated several small gifts that folks at the meeting helped themselves with. Thank you, Charles...that was very nice of you and we appreciate your generosity very much.

### RELAC Committees

Following committees held meetings during the past two months to formulate their activities for 2009.

Executive/Budget, Program, Bylaws, Legislation, Newsletter, Recreation, Outreach, Regional Planning, Management, and Membership/Recruitment committees (did I omit to mention any others!). For your information, Chairs of these committees are: Greg Walia (Executive/Budget), George Hernandez, (Program and Bylaws), Bill de la Garza (Legislation and Newsletter), Mary Rodriguez (Recreation and Outreach), Diane Sandoval (Regional Planning), Ida Ramos (Management), and Marianne Reich (Membership/Recruitment). My many thanks to all the Chairs and members of their respective committees for their due diligence and hard work in continuing to serve you as best as they can.



## You Will Find In This Newsletter...

**The Announcement of the next General Membership Meeting** is on page four ... not on the back page where such announcements are usually found. Culver City is the location and the topic is Identification Theft and Home Security. The presentation will be by the Sheriff's Department. **See page four.**

**Dodger Baseball** is coming up in June along with the big fireworks display. The details and the registration form are on **page three.**

**Hollywood Park Racing** is also set for June and all the information will also be found on **page three.**

**If travel interests you** then you want to take a look at the offerings of Great Western Travel on **page 11.** They feature a variety of discounted tours.

**China Discovery Tours** plans tours to that exotic country which are reserved for members of RELAC. **See page 12.**

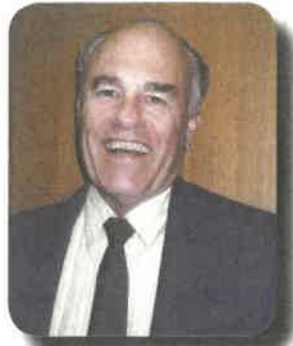
**Hearing Aid Discounts** have been added to the array of RELAC's offerings of benefits to its members. You can find out more by taking a look at **page 13.**

**The Golf at Los Amigos** entry form is on **page nine,** and the plans for the next RV Campout are detailed on **page seven.**



## Retirement Board

by Ed Morris  
Alternate Retirement Board Member



Your usually well written report on the LACERA Retirement Board from Bill de la Garza is missing this month due to an episode occurring at the General Membership Meeting held at the Arboretum on Tuesday, March 31, 2009. Bill, my friend and yours, collapsed after his presentation and was taken to the Arcadia Methodist Hospital where he is no longer in ICU and is making good progress toward recovery. I am filling in for Bill in my capacity as Alternate Retiree Representative on the Board.

Pension and medical benefits continue to be the most important assets for each of us. As usual, individuals institute ballot propositions that attack our current benefits. We must continuously work to defend our well earned benefits for which we paid. Yet we know our pensions are for life and the medical insurance is protected.

Please pay attention to your Medical Package you receive in June which reports on all the necessary rates and coverages. The rate increase will be shown; those with 25 years creditable service will continue to have the premium paid except a few in the Kaiser program who are in categories whose premiums are higher than the benchmark.

RELAC will continuously monitor any legislation proposed to support to repeal the Government Pension offset and windfall provisions.

President's Message cont from p.1

### General Membership Meeting

First of four such meetings in 2009 was on March 31, 2009 at the Los Angeles County Arboretum in Arcadia, California. Our head count didn't quite match the numbers with sign-ups....but our best educated guess is that there were over 160 attendees. Our guest Speaker, Dr. Dawn Terashita, Medical Epidemiologist, Los Angeles County Department of Health, made an excellent presentation about the subject of Healthcare Acquired Infection, including tips on avoiding becoming infected.

Our thanks to Supervisor Mike Antonovich, Los Angeles County Fifth Supervisorial District for sending Jay Gomez, Senior Deputy, to the meeting. In behalf of the Supervisor, Jay presented scrolls to RELAC, Ed Morris (RELAC past President) and to Dr. Terashita in recognition of their service to County retirees. Thank you Jay for your time and presentation of the scrolls. We hope you can visit us again in the near future.

The meeting did not end on a happy note. Near the end of the meeting, shortly after his presentation concerning the LACERA Retirement Board, Bill de la Garza suffered a severe heart attack. The Arcadia paramedics transported him to a nearby hospital. I am pleased to report that Bill is improving and is out of intensive care. We are optimistic that he will fully recover and return to his work as Chair of the Board of Retirement and as an invaluable member of the RELAC Board of Directors.

*Special thanks to all of those who called to express concern for Bill and to find out how he is doing.*

## New Members



### February & March 2009

Assessor  
Cerato, Janet K.  
Hayhurst, Janice M.  
County Counsel  
Nicklin, Harry A.  
Health Services  
Valentino, John A.  
Internal Services  
Dean, Donna M.  
Pearson, Ron  
L.A. County Police  
Cruz, Alma A.  
Probation  
Anhalt, Edward R.  
Public Library  
Flint, David  
Garcia, Rose M.  
Public Social Services  
Davis, Stephanie J.  
Stegall, Dian M.  
Wilson, Emma J.  
Public Works  
Moore, Lloyd E.  
Reese, Beverly  
Sheriff  
Fynan, Sally  
Department Not Designated  
Sasmoto, Ellen

## Special Notice!

***Want to be a RELAC Board Member?  
Here's how.***

This year there will be five seats on the RELAC Board of Directors up for election. The term for the newly elected Board of Directors is three years. Those members who are interested in running for one of the seats should promptly contact the RELAC office and inform them of your interest. Detailed information on how to apply for the election and the process that is required will be mailed to you. The office phone numbers are (800) 537-3522 and (626) 308-0532. The email address is [admin@relac.org](mailto:admin@relac.org). This information may also be found on the website at [www.relac.org](http://www.relac.org). Check on "news" on the left side of this home page.



# RELAC Fireworks Night at Dodger Stadium

by Mary K. Rodriguez  
Chair, Recreation Committee

Hello Everyone!

It's time for RELAC members and their guests to hear "Batter Up – Play Ball". Yes, it is time again to think baseball for 2009.

This year the game between the Los Angeles Dodgers and the Colorado Rockies will be held on Tuesday, June 30, 2009 at 7:00 p.m. It is also the night of a SPECTACULAR FIREWORKS show.

The cost of the tickets will remain the same as last year, \$18.00. The seats are in the lower reserved section on the third base side.

We have reserved only 200 seats so get your ticket order in early to avoid disappointment.

Please fill out the coupon below and send it with your check as soon as you can. The deadline is June 15, 2009.

Your tickets will be mailed on June 22, 2009.

Don't miss the fun event. Hope to see you there!



## RELAC Day at Hollywood Park

by Mary K. Rodriguez  
Chair, Recreation Committee



Dear Retiree

Hello again. This is a reminder that the RELAC Day at the Hollywood Park will be on June 11th, 2009. The ticket price of \$28.00 includes admission to the park, valet parking, a program, a great buffet lunch and soft drinks.

Gates open at 10:15 a.m. and the buffet will be between 12:00 p.m. through 2:00 p.m. 1st race is at 1:00 p.m.

Please fill out the coupon below and send it along with your check as soon as possible. Your tickets will be mailed to you by June 3rd.

Come join us for a fun day. See you there.

### BASEBALL TICKETS

Game Starts at 7:00 P.M.  
Tuesday, June 30, 2009

**DODGERS VS. COLORADO ROCKIES**

Name \_\_\_\_\_

Address \_\_\_\_\_

City \_\_\_\_\_

Phone (\_\_\_\_) \_\_\_\_\_

No. of Tickets \_\_\_\_\_ @ \$18.00 each = \$ \_\_\_\_\_

Total Enclosed \$ \_\_\_\_\_

Requests for tickets **MUST** be received by  
**Monday, June 15, 2009.**

Make checks payable to:

RELAC BASEBALL  
1000 So. Fremont Ave., #15  
Alhambra, CA 91803-8802

**Enclose this coupon along with your check**



For Office Use:

Date Rec \_\_\_\_\_ Amt \$ \_\_\_\_\_ Check # \_\_\_\_\_

### RELAC DAY AT THE RACES

Hollywood Park RaceTrack  
Thursday, June 11, 2009



Name: \_\_\_\_\_

Address: \_\_\_\_\_

City: \_\_\_\_\_

State \_\_\_\_\_ Zip \_\_\_\_\_

Telephone (\_\_\_\_) \_\_\_\_\_

No. of tickets \_\_\_\_\_ @ \$28.00 Ea = \$ \_\_\_\_\_

TOTAL \$ \_\_\_\_\_

Requests for tickets must be received by  
May 27th.

Enclose a check (no cash please) for your  
total payable to RELAC and mail to:

RELAC  
1000 S. Fremont Ave., Unit 15  
Alhambra, CA 91803-8802

For Office Use:

Date Rec: \_\_\_\_\_ Amt \$ \_\_\_\_\_ Check # \_\_\_\_\_

# General Membership Meeting

George Hernandez, Chair, Program Committee

Marianne Reich and Mary K. Rodriguez, Vice Chairs, Program Committee



**TUESDAY, JUNE 9, 2009**

Teen Center  
Veteran's Memorial Complex  
4119 Overland Avenue  
Culver City, CA 90230

**~ DRAWING FOR GIFTS ~**

You will need your RELAC Membership Card

9:15 a.m. – Complementary Refreshments

10:00 a.m. – Meeting Begins

**TOPIC:** Identification Theft and Home Security

**PRESENTER**

Los Angeles County Sheriff's Department

Retiree Information from RELAC & Associates

## Driving Directions:

The Veteran's Memorial Complex is at the intersection of Overland and Culver Blvd.

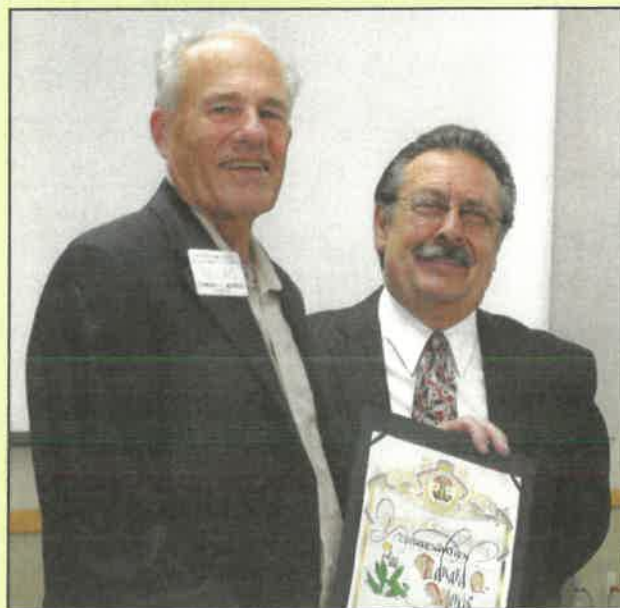
From 10 Fwy – Eastbound, exit Overland Ave. off ramp, turn right on National Blvd. to Overland Ave. Turn left, go approximately 1 mile to Veteran's Memorial Complex.

Traveling South on 405 Fwy, exit Culver Blvd., turn left on Sawtelle Blvd., and left again on Culver Blvd. Go ½ mile to Veteran's Memorial Complex.

Traveling North on 405 Fwy., exit Sawtelle Blvd., turn left for ¼ mile to Culver Blvd., turn right, go ½ mile to Veteran's Memorial Complex.



Juventino Gomez, representing Supervisor Antonovich, presents a certificate to Dr. Dawn Terashita in recognition of her service to retirees. Dr. Terashita, the featured speaker at RELAC's General Membership Meeting at the County Arboretum gave a highly informative presentation on Healthcare Acquired Infections.



Supervisor's Senior Deputy Gomez presents a certificate honoring Ed Morris's service to retirees. Ed is the Immediate Past President of RELAC and is also the Alternate Member of the LACERA Board of Retirement, representing retired members. (both photos by Sol Fingold)



# REGIONAL ACTIVITIES

by Diane Sandoval  
Chair, Regional Support



## Las Vegas Luncheon Meeting – March 19, 2009

Approximately 150 members enjoyed the Las Vegas Luncheon Meeting at The Tuscany Suites and Casino on March 19, 2009. I have many to thank for their support and help in making this event a great success. Kenneth Reid and Charles Kimura, both residents of Las Vegas, generously gave their time and treasure. Kenneth spent a considerable amount of his time looking for potential meeting sites and also assisted my husband Gil in selecting the Wild Horse Golf Course for RELAC's Second Golf Tournament. Charles generously donated approximately 25 gifts which he displayed at a side table and were available on a first come first serve basis. I send a big "thank you" to the members on the Board and their spouses for pitching in by staffing the registration table, setting up our RELAC signage and performing any other tasks requiring attention. Needless to say we are here to serve you "our members" and we thank you for supporting our events.

A "special thank you" goes to Ray Guyovich, RELAC Board Member, for making the decision to hold our luncheon meeting at The Tuscany Suites and Casino.

Our featured speaker, Lisa Mazzocco LACERA Chief Investment Officer, assured everyone there that our pensions are safe. The Retirement Fund remains financially strong in spite of the volatility in the financial markets. She stated her first priority is to ensure adequate cash reserves are maintained to pay pension benefits; additionally, she makes sure operational expenses are covered and adequate levels of liquidity are maintained to fund investment manager commitments. Lisa, please accept our thanks for making the trip to Las Vegas to speak to us.

Before I move on to other regional events, I would like to congratulate the winners of our three-way split raffle. Two winners walked away with \$188.00 each and the third winner received \$189.00. Additionally, the Tuscany Suites and Casino generously donated a certificate for a complimentary two night/three day stay at The Tuscany. Look to the right to find photograph of the three winners and their names.

## Lancaster Regional Meeting – April 16, 2009

I promise to give you a full report in my next article. I know Donna is planning a great event for members living in Lancaster and surrounding cities. Those of you who have attended Donna's luncheon meetings in the past will agree that her events are fun and informative.

## Huntington Beach Regional Meeting – August 31, 2009

Plans are in the works to have a breakfast meeting at the Huntington Beach Public Library on August 31, 2009. The name of our speaker will be announced in my next article. Until then - PLEASE MARK THIS DATE ON YOUR CALENDARS!

## Here Are Happy Las Vegas Winners

Photos by Ida leon Ramos



Mary Sexton was the grand prize winner of three days and two nights at the Tuscany Hotel.



The winners of the three way split raffle were, from left to right, James McAdam, Robert Roudebach and Ray Conner. The first two came away with \$188 and Ray with \$189.



Barbara and Vince Terry tried their luck at Tuscany Hotel slots, Judging by their smiles, they may have been winners.

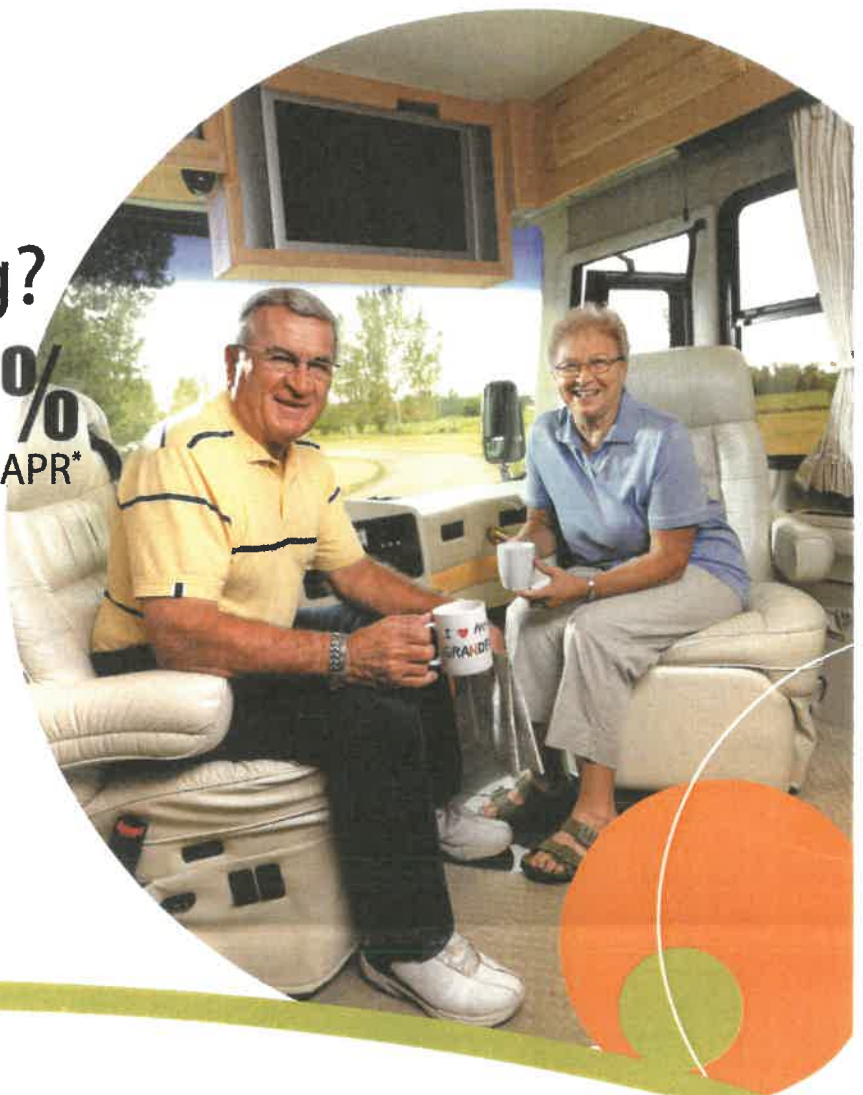
RELAC Members

Where will you  
**Go RV**ing?

**8.25%**  
APR\*

*RV Loans*

- Loan approval within minutes
- Finance up to 110% of the MSRP
- Repayment terms up to 20 years



**Join Southland Credit Union and receive  
two FREE Movie Tickets with Fandango.com.  
Offer good while supplies last, so join today!**

**Southland**  
CREDIT UNION

Membership is subject to eligibility. All new accounts will be verified through ChexSystems and are subject to credit approval. \*APR=Annual Percentage Rate. Rate quoted as of 4-1-09 for new RVs (8.50% APR for used) and includes a .25 discount for autopay from a Southland Checking or Money Market Account. Rates and offer are subject to change without notice.



**Your Money is Secure.** Your deposits are insured up to at least \$500,000. The National Credit Union Administration (NCUA), an agency of the U.S. Government, insures your deposits up to \$250,000 (\$250,000 for IRA Accounts), AND any amount up to an additional \$250,000 is insured by American Share Insurance (ASI), a private insurance company contracted by the Credit Union to increase the safety of your funds.

**Downey**  
8545 Florence Ave.  
Downey, CA 90241

**Los Alamitos**  
10701 Los Alamitos Blvd.  
Los Alamitos, CA 90720

**Los Angeles**  
300 N. Los Angeles St.  
Los Angeles, CA 90012

**www.SouthlandCU.org • 800.426.1917**



## Janell Clifton Contributed Much to RV Club and RELAC

*We are saddened by Jannell's death. Janell was an active member of RELAC's Recreation Committee and served for nine years as co-Coordinator of RV Club, along with her husband Ed. Together they made the club's outings highly successful. Ed has provided the following description of Janell's life.*



**Janell Irene Steffen Clifton  
1939-2009**

Janell was born on August 4th 1939 In Britt, Iowa. After a number of moves the family settled in Waukee, Iowa where she was raised and graduated from high school in May of 1958.

On November 25th, 1958 she was united in marriage to Edward Clifton at the Methodist church in Waukee. The family moved to Des Moines, Ia where Ed was employed. A year later on December, 4th, 1959 their only child a son named Jeffrey was born.

In July, 1961 the family moved to Long Beach, Ca where they set up housekeeping and raised their son. Janell remained a homemaker so that she could give her full attention to being a good mother. Even though she had only the son she volunteered and became a girl scout leader for a number of years. She was also active in one of the local TOPS club and was a leader for 10 years or more. She was a long time member in a local bingo club for many years .

Also the family enjoyed camping. Starting with a tent, then a pickup camper, they moved to a small travel trailer and finally to a class A motor home. Fishing from a small boat was a hobby the family enjoyed. After Ed's retirement from LA County Public Works Dept. they joined RELAC and became active in the camping club.

Several years later Ed became the camping clubs coordinator and Janell stepped up to become co-coordinator. She did most of the paper work as well as dealing with the club members. She loved interacting with all the members and became very good at it. I think she could have started a conversation with a telephone post. She was always cheerful and more than willing to step in and help wherever and whenever she could.

Even with her declining health she never complained about being thrown a curve ball in life. One of her great joys was playing cards with the other club members and telling war stories. I( Ed ) and the rest of our camping family are surely going to miss her very much.

## RV Outing Notes



Ed Clifton  
Coordinators of RV Club



Twelve rigs enjoyed the hospitality of Hemet and the Mountain Valley R.V. Resort. There are always plenty of things to do in Hemet to keep our campers busy. Be it a trip to the casino, thrift store shopping, or a golf course or two, there are lots of things to enjoy. Even if you don't want to leave the campground there are always people willing to sit & swap fish stories with, play cards or just enjoy the beautiful weather.

Our wagon masters were Richard and Martha Wilkerson who did a great job. Of course everyone is always willing to help wherever it is needed which makes the job a lot easier.

Our next outing will be on May 11-12-13 at Lake Elsinore R.V. Resort. Joe & Helen Quintana will be the Wagon masters. See you there. If you have any questions call me at 562-428-3360.



# Las Vegas Invitational Golf Tournament 3-18-09

by Gil Sandoval  
RELAC Golf Director

The turn-out was small but they could not have asked for better weather as the temperature was 80 degrees. Nancy Signer out-did everyone by scoring a net 58. The "A" flight was won by Jimmy Newman repeating last year's victory as he came through with a net 65. Kenneth Reed edged out Mike Zabaro by one stroke with a net 70 in taking the "B" flight.

The next regular tournament is June 1st at the Los Amigos Golf Course at 8:00 A.M. Our entry fee has increased to \$32.00 to accommodate the raise in fees to play at the courses. The deadline for entry fees is May 15, 2009. The entry form is on page 9.

On the Santa Anita tournament rainout; the Santa Anita Golf Course management is refusing to give the RELAC golfers credit. So the Recreation Committee has placed the subject on the agenda of the next meeting, after which it will be presented to the RELAC Board for resolution.

"A" Flight Winner (19 and under)  
1st Jimmy Newman (65)

"B" Flight (20-up Handicap)  
1st Kenneth Reed (70)

Ladies  
1st Nancy Signer (58)

Closest to the Pin on Par 3's  
Men # 2 Gil Sandoval  
# 7 Mike Zabaro  
#11 Doug Gatlin  
#14 Doug Gatlin

Women  
#11 Nancy Signer  
#14 Nancy Signer



## Investments Board



by Diane Sandoval  
Retiree Representative,  
LACERA Board of Investments

I don't know about you but I am tired of the gloom and doom. Hopefully this article will brighten your day. First of all we who have already retired are guaranteed to receive our pension benefits for life. Lisa Mazzocco, LACERA Chief Investment Officer, recently spoke at our luncheon meeting in Las Vegas and affirmed that fact. She started her presentation by saying her goal that day was to make sure everyone left the luncheon with the understanding that their pensions are guaranteed for life. Our benefits are protected by State Law. Lisa went on to say that her first priority is to make sure LACERA maintains a revolving cash reserve sufficient to pay our pension benefits for several months.

As I write this article the markets over the past four weeks are looking a bit better. In fact they're booming today (April 2, 2009). While no one can predict the future I remain cautiously optimistic and hope for the best. There is still no clear indication that stability will once again prevail and that the US economy is recovering. Unemployment continues to increase and home prices continue to decline. I have no crystal ball to tell whether the markets will continue to move up or fall again. The one thing that is certain is the commitment LACERA and Los Angeles County has made to its retirees and members. In good times and in bad, LACERA and Los Angeles County will pay the promised benefits.

Given the budget crisis California and other states are experiencing attention may once again turn to eliminating defined benefit plans. Just in case you're faced with having to defend your pension, you may want to point out that the average benefit payment for general members is a modest, approximately \$32,000 per year, when compared to Social Security's average benefit payment of \$34,800.00 per year. Tell whoever challenges you that there were many years during your career when salaries were frozen and you hung in there while they were receiving raises and bonuses. We served the public and should not be ashamed to receive our pension each month. We're also contributing to the local economy by being taxpayers and consumers.

You worked hard all your life serving the citizens of Los Angeles County. Enjoy your retirement – you've surely earned it. As always thank you for your continued support. I look forward to seeing you at RELAC meetings.





## RELAC NEWSLETTER

Vol 44 - May/June 2009

Number 3

Retired Employees of  
Los Angeles County  
1000 S. Fremont Ave.  
Unit 15, Alhambra, CA

91803-8802

(626) 308-0532

(800) 537-3522 Fax (626)

308-2901

E-mail: admin@relac.org

Board of Directors

President

**Greg Walia**

Vice President

**Ida Leon Ramos**

Secretary

**Mary Lou Bangar**

Treasurer/ Past

President

**Edward C. Morris**

Members

**Bill de la Garza**

**Domingo Delgado**

**Sol Fingold**

**John F. Fleming**

**Martin Golds**

**Raymond R.**

**Guyovich**

**George Hernandez**

**Fred J. Miller**

**Marianne Reich**

**Mary K. Rodriguez**

Emeritus

**Dave E. Kaling**

Editor: Martin Golds

Copyright © 2009 by

RELAC This information

presented in your RELAC

Newsletter is believed

to be from reliable

sources. However, no

responsibility is assumed

by RELAC or the writers

for inaccuracies in the

articles as published.

Office Hours

9:00am - Noon &

1:00pm - 4:00pm

Monday - Thursday

Friday: 9:00am - Noon

Closed Saturday,

Sunday &

Public Holidays

website: www.relac.org

## Golf News



### La Mirada Golf Tournament 3-30-09

By Gil Sandoval



We had some excitement as guest Cliff Yamamoto had a hole-in one on the Par 3 15th. The ladies really shined as Kathy Malmfeldt won with a net 64. She was one up on Sue Danbara. The "A" flight was won by Bob Bogawa with a net score of 65 and he was one ahead of Tom Hoagland and Manuel Diaz. Jim Guild edged out Ed Acosta, Luis Martinez and Burr Prentice by one stroke with a net 67 as he took the "B" flight. Gus San Miguel shot a nice net 65 to win the "C" in an easy fashion.

The next regular tournament is June 1st at the Los Amigos Golf Course at 8:00 A.M. Our entry fees have increased to \$32.00 to accommodate the raise in fees to play at the courses. The deadline for entry fees is May 15, 2009.

#### "A" Flight Winner (19 and under)

1st Bob Bogawa (65)

2nd Tom Hoagland (66)\*

3rd Manuel Diaz (66)

#### "B" Flight (20-27 Handicap)

1st Jim Guild (67)

2nd Ed Acosta (68)\*

3rd Luis Martinez (68)\*

#### "C" Flight (28 up Handicap)

1st Gus San Miguel (65)

2nd Raul Solis (69)\*

3rd Frank Barajas (69)

#### Ladies

1st Kathy Malmfeldt (64)

2nd Sue Danbara (65)

3rd Nancy Signer (69)\*

#### Closest to the Pin on Par 3's

Men # 3 Paul Lopez

# 5 Clifton Yamamoto

# 9 Bob Kubo

#11 Tom Hoagland

#13 Gary Hartley

#17 Gene Danbara

#### Women

# 9 Becky Gonhue

#13 Nancy Signer

#17 Nancy Signer

#### NEXT TOURNAMENT -

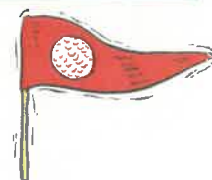
Monday, June 1, 2009

Los Amigos Golf Course: 8:00 A.M. start

Entry Deadline May 15, 2009

## RELAC Golf Entry Form

Los Amigos Golf Course  
7295 Quill Drive  
Downey, CA 90242



**Monday, June 1, 2009**

Please Print

1. Name \_\_\_\_\_

Address \_\_\_\_\_

City \_\_\_\_\_ Zip \_\_\_\_\_

Phone \_\_\_\_\_

Fees: \$32.00 PER GOLFER - CART EXTRA

If possible, place me in a foursome with below listed golfers. Addresses of all golfers MUST be included.

If possible, we would prefer an  
Early \_\_\_\_\_ Late \_\_\_\_\_ starting time.

2. Name \_\_\_\_\_

Address \_\_\_\_\_

City \_\_\_\_\_ Zip \_\_\_\_\_

Phone \_\_\_\_\_

3. Name \_\_\_\_\_

Address \_\_\_\_\_

City \_\_\_\_\_ Zip \_\_\_\_\_

Phone \_\_\_\_\_

4. Name \_\_\_\_\_

Address \_\_\_\_\_

City \_\_\_\_\_ Zip \_\_\_\_\_

Phone \_\_\_\_\_

NOTE: Only ONE GUEST per member.

Enclose check for \_\_\_\_\_ golfers @ \$32 per Golfer. Make checks payable to RELAC Golf. Mail entry to RELAC GOLF, 1000 So. Fremont Ave., #15, Alhambra, CA 91803-8802

Entry Deadline

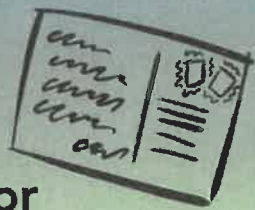
May 15, 2009

ALL CHECKS MUST BE  
IN RELAC OFFICE

For Office Use:

Date Rec. \_\_\_\_\_ Amt. \$ \_\_\_\_\_ Ck# \_\_\_\_\_

## Letters To The Editor



I would like to express appreciation to Bill de la Garza for his fine explanation of legislative concerns. He is easy to comprehend and shows a real understanding of the measures and of RELAC concerns.

Helen Vaughan  
Altadena, CA

My wife, Pamela, was born in England and left at the age of 23 to live in the U.S. The prospect of a national health care system distresses her a great deal. All of her family still lives in England and both her niece and nephew work within the health care system. She is upset that with all our national discussions the many downsides of this system are never mentioned. When the government has total control (which they would in this system of "single payer") over any industry or service politicians and bureaucrats will determine how things are run.

When family and/or friends ask Pamela if she might ever go back to England, her answer is still the same: "probably not, the health care system will kill me before my time". She, and our friends in Canada, could spend many hours giving first hand testimony about the pitfalls of single payer health care.

However, on a slightly more positive note she maintains; "if the U.S. goes to nationalized health care we'll be dead before the current grandchildren and great-grandchildren start to figure out it was a huge mistake".

Dave & Pamela Clark  
Yelm, WA

The articles by Bill de la Garza, Irma Strantz and Terry De Wolfe regarding Single Payer Health care (in the March/April 2009 RELAC Newsletter) appear to be very supportive of this type of health care and stress that it is not socialized medicine.

They referred to Governor Schwarzenegger's veto of SB-840 and the fact that he "hasn't suggested that we do away with single payer Medicare." I think we are all aware that Medicare is fraught with fraud and both the patient and the doctor are guilty of cheating in the program.

## For Sale

**Condominium for Lease**-Senior's 55 Plus- Move-In Ready. Sun City, CA. No Smokers/Pets Preferred. 2 Bed, 2 Bath with enclosed patio room, used as den/family room. Inside laundry room w/washer and dryer. Kitchen has new refrigerator w/ice maker and dishwasher. All built in appliances are electric, new heating & AC unit + carbon monoxide detectors. Water, gardening, trash (HOA) home owners association paid. Large front porch, car port, lawn and back patio + many activities to choose from at the association; 2 golf courses, pools, spa and exercise room. Also use of the country club restaurant. If interested, please contact Rose at (951) 672-8320.

## Married After Retirement? New Wrinkle on Survivor Benefits

Several years ago the California State legislature passed and the Governor signed into law an amendment to the County Employees Retirement Act of 1937 which permitted County Boards of Retirement to provide eligibility for survivor benefits to spouses married after an employee's retirement or less than one year prior to the retirement. RELAC Board member John Fleming was a leader in obtaining this legislation. Although a number of County Boards of Retirement have implemented this legislation, Los Angeles County's Retirement Board has not. RELAC continues to strive to have it implemented here.

The amendment in question is limited in its application only to cases in which the retiree has previously chosen the unmodified survivor allowance, 60% for most Los Angeles County retirees. If implemented by the Retirement Board it would not include survivors in cases in which the employee had previously chosen a modified allowance to provide an increased survivor benefit. A bill with a good chance to become law would make it possible for a newly married retiree to change the option from modified to unmodified in order to qualify a spouse for survivor benefits. Normally an employee's choice cannot be changed subsequent to his or her retirement.

To qualify for the unmodified survivor benefit the spouse must have been married to the retiree at least two years before the retiree's death and must have been 55 years old when or before the death occurs.

The bill in question, AB 1136, was introduced by Assemblymember Paul Fong and was sponsored by the California Retired County Employees Association, an organization to which RELAC belongs.

Of course, should AB 1136 become law, RELAC will work for its implementation by the Retirement Board, along with the original amendment.



But all three fail to state that Single Payer Health care will be funded by the government and the medical profession will be the messenger. I don't think I want the 535 members of Congress to determine my medical care via some sort of committee.

No cute quotes this time, just a word of caution.  
Jeanne A. Thompson  
Santa Cruz, CA



# Touring With Great Western

626-578-1161 • 800-344-7090

Don't forget to ask for your RELAC discount!

## Tour The West With RELAC

### Pacific Coast Fall Rail & Sail

SEATTLE - VANCOUVER - LOS ANGELES

7-Day Rail/Cruise Tour

Coast Starlight • Coral Princess

**No Air!**

Departs

September 18, 2009



**Tour Price Includes**

- One Way Rail Los Angeles/Seattle (bedroom, **all meals**)
- 3 Night Cruise - *Coral Princess* (**all meals** and entertainment aboard ship)
- Port Charges and Government Fees • Deluxe Motorcoach Transportation
- Two Nights Hotel Accommodations Seattle/with Two Breakfast •
- Seattle City Tour • Dinner Space Needle
- All Transfers • Tax & Baggage Handling

Cruise and Amtrak Deluxe Bedroom		
Category	Stateroom	Double Per Person
I	Inside	\$ 1,699.00
F	Ocean View (Obstructed)	\$ 1,379.00

Cruise and Amtrak Standard Bedroom		
Category	Stateroom	Double Per Person
I	Inside	\$ 1,699.00
F	Ocean View (Obstructed)	\$ 1,739.00

### Beautiful Colorado

7-Day LandTour

Value Packed  
Budget Friendly!

Departs

August 16, 2009

Double Per Person: \$829.00

Single: \$1029.00

Checks only - Credit Cards - add 3%



**Tour Price Includes**

Deluxe Motorcoach Transportation

\* 6 nights lodging

\* 10 Meals: 6 Breakfasts and 4 Dinners

\* Tour of the Garden of the Gods

\* Visit to the United States Air Force Academy,  
the Royal Gorge & Manitou Springs

\* Gaming at Cripple Creek, historic Western Town

\* Professional Tour Manager Throughout

### MONTEREY BAY

*Holiday*

MONTEREY - CARMEL - SANTA CRUZ

DEPARTURE DATE:

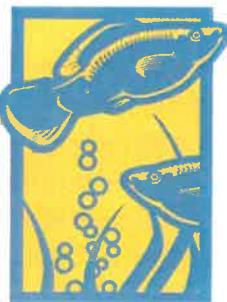
August 23, 2009

4 DAY MOTORCOACH TOUR

TOUR PRICE:

Double Occupancy: \$599.00

Single: \$799.00



**TOUR PRICE INCLUDES:**

- \* Deluxe Motorcoach Transportation
- \* 3 Nights Hotel Accommodations
- \* 3 Deluxe Cont. Breakfasts, 1 BBQ Lunch, 2 Dinners
- \* Sights: Aquarium - Carmel - 17 Mile Drive - Guided
- Tour of Monterey & Pacific Grove - Cowell Redwoods
- \*Roaring Camp Rail Excursion
- \*Guided Ag Tour
- \* Driver's Gratuity
- \* All Tax & Baggage Handling



## News From LACERA

by Janice Golden  
Assistant Executive Officer



### LACERA retirees can be found across the globe, and our ranks continue to grow.

Every three years in this column, I enjoy sharing the latest statistics on retiree demographics. I'm happy to report our retirees are a hearty lot! Here's my update; I think you'll find these stats interesting:

#### LACERA Centenarians & Near-Centenarians

Year	Retirees or Survivors over Age 100	Retirees or Survivors between Age 90 & 100
2009	47(44 females/3 males)	2,109
2006	50	1,700

#### LACERA Retirees: Where Most Live

Year	California	Nevada	Arizona
2009	42,731	1,340	1,328
2006	41,278	1,322	1,284

There are LACERA payees in every state, the District of Columbia, and in 188 countries!

#### LACERA Retirees & Survivors

2009	2006
51,938	49,910

And, the person enjoying LACERA retirement for the longest period of time is someone who retired in April 1958 — 51 years. FABULOUS!



## Travel To China This Fall With RELAC

**Call to confirm your seat(s) for this amazing journey.**  
**Deposits are now FULLY REFUNDABLE !\***

- This incredible \*10 day/ 7 night tour starts from Los Angeles (also San Francisco or New York) on **October 23, 2009**.
- Next presentation/ planning meetings are Saturday, May 30 and June 20, 2009. Call Jeff to reserve your seat.
- All-inclusive\* — Beijing, Xi'an, Shanghai, & Suzhou — all flights, hotels, meals, professional English speaking guides, ground transportation, transfers, sites, and entertainment tickets.
- **Call Jeff for a FREE 2009 tours catalog!**
- Tour Online: <http://www.chinadiscoverytours.com/china/2009-tx.html>

\*Disclosures: Deposit refunds up to 60 days before tour date; 10 days/ 7 nights includes international travel dates; airport tax, China visa, & insurance are separate.



**Contact: Jeff Adkins**

TF: 1-866-992-4462 x. 117 D: 310-802-7117

[www.chinadiscoverytours.com](http://www.chinadiscoverytours.com)

[jeff@chinadiscoverytours.com](mailto:jeff@chinadiscoverytours.com)

20407 Hawthorne Blvd., Torrance, CA 90503

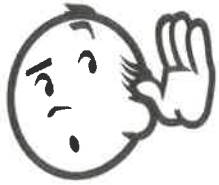
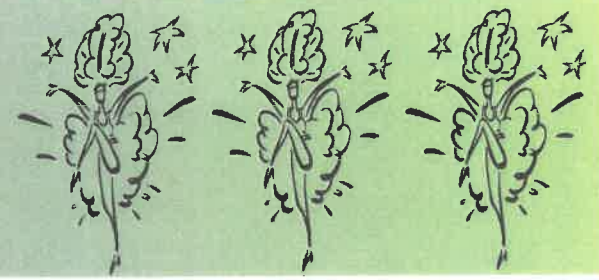
Asia travel specialist  
for over 20 years



CASOT#1021060-10



# Members Spotlight



## RELAC Has Enhanced Supplemental Hearing Benefits:

### HearPO® Hearing Aid Discount Program;

Free to RELAC Members: This is a nationwide hearing healthcare company with convenient locations. As a Member of the Retired Employees of Los Angeles County (RELAC) you and your family are automatically eligible for these HearPO® Benefits:

- Hearing care close to home, provided by one of 1,600-plus licensed and credentialed professionals nationwide.
- Average savings of 25% on over 250 digital hearing aid models from industry leading manufacturers.
- 3-year repair and loss and damage warranty for 1x occurrence.
- 1-year follow-up services and adjustments.
- High quality digital hearing aids available at all technology levels.
- Low price guarantee.
- Full 60-day trial period.
- No restocking fees.
- Discount battery program with your purchase.
- Financing available.

To take advantage of your HearPO® Benefits and schedule an appointment just telephone 1-888-434-7464 and tell them you are a Member of the Retired Employees of Los Angeles County (RELAC).



## RV Outing Gets Positive Review in Sheriffs Relief Publication

*In a recent issue of the Star News, published by the Sheriffs Relief Association of Los Angeles County, a RELAC RV Outing received positive coverage in the following item. It was included in an article written by Don Fandry and Chickee Nelson. RELAC appreciates their support. - Editor*

On January 19 to 22 we joined RELAC RV's at Pechanga R.V. Park in Temecula. There were 17 rigs. Everyone brings a hors d'oeuvre the 1st night. The 2nd night everyone brings a dish to share at dinner, and the 3rd night we all go out to dinner somewhere in the area. This time it was the Pechanga Buffet. A breakfast is inclusive and prepared by the Wagon Master with assistance. They had a short meeting after dinner with a 50/50 drawing. We actually won a \$35 Chevron Gas Card. This group meets every 3 months. They are a nice group of friendly people. All retirees of Los Angeles County are welcome to attend their campouts.



## Watch Out for this Petition!

In the coming months you may be approached and asked to sign an initiative petition entitled the McCauley Public Pension Reform Act. It is not in your interest to sign it.

The intent of this initiative is to amend the California constitution so as to allow public employee pension contracts to be renegotiated. This would open the door to reducing vested benefits of existing and future County retirees. If this proposal makes it to the ballot it may well have a good chance of passing. If it does pass it will be possible to reduce your pension benefit.

## IN MEMORIAM

*This list includes retired employees, both RELAC members and non-members.*

*\* denotes RELAC members*

### Adoptions

White, Paulleatha\*

### Agricultural Comm./Wts. & Meas.

Wendt, Lauren B.\*

### Alcohol/Drug Pgms. Admin.

Stillings, Fredrick L.\*

### Animal Control

Sahagun, Vicente D.

### Art Museum

Martinez, Juan M.\*

### Assessor

Bass, Gladys L.\*

Orlin, Sidney T.\*

Thatcher, Marian J.

Weissman, Alvin\*

### Auditor Controller

Dyer, Walter W.

Smith, Gwendolyn\*

### Building Services

Clay, Ruth\*

### Chief Administrative Office

Lewis, William J.

### Child Support Services

Laxton, Margaret J.\*

Neill, Kathleen M.\*

Santana, Emma

Valenzuela, Helen

Yamaguchi, Michiko C.

### Children's Services

Bruce, Mary

Carmody, Kevin

Harris, Charles K.

Le Cornu, Mayme H.

Robbins, Katherine F.

Rodriguez, Virginia

Sanchez, Joyce

Tidwell, Gloria J.

### County Counsel

Calderon, Francisco A.

### Data Processing

Wellington, Frederick E.\*

### District Attorney

Orr, Joseph B.\*

### Engineer

Aja, Jose\*

Boettcher, Paul C.\*

Stoterau, M. Gale\*

### Engineer/Facilities

Barrio, Henry R.\*

Van Myers, Zell S.\*

### Facilities Management

Hernandez, Henry J.\*

Palmer, R. B.\*

### Fire

Aplanalp, Thomas L.\*

Lanford, William D.

Moore, Leroy D.

Perkins, Jim W.

White, Wallace F.\*

Woodall, Elena F.

### Flood Control

Benson, Robert C.\*

Gardner, Garth G.\*

Takayama, Shigeo\*

### Forester & Fire Warden

Younkers, Gordon G.\*

### Harbor/UCLA Medical Center

Calhoun, Lula M.

Hong, Chul K.

Kaiserman, Irving D

Kim, Byung

Parungao, Felicidad J.\*

Sharp, Odessa L.\*

Ueda, Misae

Umali, Clemente A.

### Health Services

Hertz, Louis\*

Miner, Leonard H.\*

Yoshimi, Herbert A.\*

### Health Services Adm.

Porter, Henry

### Hospitals

Smith, Richard A.

### Internal Services

Grenfell, Sylvia

Hurt Jr., Robert C.

Mc Donough, Rosemary J.\*

Rabben, Sandra

Saiki, Ernie\*

Williams, Cheryl L.

### Juvenile Court Health Services

Larsen, Mary L.

### King/Drew Medical Center

Creighton, Ellview E.\*

Harice, Doris

Wilson, Leola J.

### LACERA

Harris, Rose G.

### LAC + USC Medical Center

Alesi, Sylvian M.

Biddle, Marjorie\*

Cuda, Dorothy B.\*

Ferraro, Erna W.

Hannah, Jerline

Hirschberger, Barbara G.

Lopez, Jose B.

Maxwell, Sonora L.

Messina, Joseph P.\*

Morris, Peggy A.

Olachea, Dalia M.\*

Ro, Jaewon\*

Schwartz, Jeanette K.\*

Sugitani, Eric Y.

Talluto, Pauline\*

### Marshal

Hennes Jr., Herbert A.\*

### Medical Examiner-Coroner

Wrobel, Vera B.\*

### Mental Health

Beckett, Barbara J.\*

Claybrooks, Isaac J.\*

Collins, George E.

Halden, Walter\*

Maranan, Lucila B.

Meizner, Martin\*

### Municipal Court

Anderson, Shirley M.\*

Moss, Wardell G.

Smith, Deloris J.

### Municipal Court Reporter

Guerrero, Ernestine C.

### Northeast CHC Health Services

Chavez, Rose M.

### Olive View Hospital

Dominguez, Robert R.

Fayerman, Joseph W.

Lucas, Consolacio B.

Kephart, Katherine

Palomares, Sabino P.

Robin, Virginia E.

Sutton, Patricia S.\*

### Parks & Recreation

Auten, Jack\*

Pounds, Wallace W.\*

Romstedt, Hugh D.

Whitley, Ronald A.

### Probation

Bickford, Glenn M.\*

Bock, Robert L.

Dozier, Reva\*

Haggerty, Curlin R.

Hankinson, Kennis L.\*

Hayes, Emmaline E.

Johnson, Chalmetta E.\*

Neumann, Harry J.

Otero, Marco A.

Powers, Josephine E.\*

Schiffer, Arthur N.

Thomas, Earl B.\*



## IN MEMORIAM

*This list includes retired employees, both RELAC members and non-members.*

*\* denotes RELAC members*

### Public Defender

Andrews, D. M.

### Public Health Program

Dennis, Ruth J.\*

McKellar, Clara B.\*

Petralia, Jack\*

Presbrey, Mary J.\*

Robertson, Norma H.\*

### Public Library

Lear, Freda F.\*

Steffen, Florence S.\*

### Public Social Services

Akbar, Rashidah

Boyle, Mary Eillen\*

Burton, Mary Jane\*

Brewer, Romaine

Castillo, William R.

Felt, Kathryn L.

Forbes, Mary H.\*

Fukutaki, Elizabeth T.\*

Gonzalez, Lourdes F.

Groshong, Mary E.

Hiraga, Benjamin M.\*

Hornaday, Donald W.

Johnson, June M.

Laird Jr., William J.\*

Ludwig, Harold W.\*

Marshall, Evelyn

Moore, Delores L.\*

Ortega, Evelyn\*

Pisciotta, Joseph L.\*

Rainey, Leslie D.

Sakai, Ethel A.\*

Santos, Teresita

Smith, Hester\*

Willegas, Lillian M.\*

Wennerstrom, Rita M

Woods, Beverly A.

Yin, Bernice B.\*

### Public Works

Lee, Hon

Leplat, Ernest E.

Mace, Marvin R.\*

McKnight, Leroy\*

Ostrom, Richard A.\*

Voge, James F.\*

Wilson, John R.

### Purchasing & Stores

Benefiel, James C.\*

### Rancho Los Amigos Hospital

Morris, Virginia M.\*

Wilson, Alicia

### Real Estate Management

McCain, Carson N.\*

### Regional Planning

Tran, Giang C.

### Road

Calcagni, Eleuterio\*

Isbell, Earl H.\*

Poulain, Frank E.\*

### Sheriff

Barlow, Ernest\*

Bohannon Jr., Marion C.\*

Bratsch, Paul J.\*

Bush, Allen J.\*

Cleary, Lawrence P.\*

Dorsey, James W.\*

Fines, Eugene\*

Franco, Florencio E.\*

Franzen, George J.\*

Furushima, Frank R.\*

Gardner, Dorothy\*

Hanna, William E.

Jackson, Terence S.\*

Johnson, George

Johnson, Ronald L.

Kirk, Thomas N.

Kovalcik, Cecelia A.\*

Lauterbach, Terry D.\*

May, Beverly E.\*

Mc Mullan, Dale J.\*

Scriven, James E.\*

Short, Roland E.\*

Sisk, John H.

Webster, David A.

Wulwick, Barry J.

### Superior Court Officers

Alexander, John R.

Chien, Priscilla Y.

Feliz, Angelina C.\*

Imbler, Wallace A.

Leventhal, Stephen A.

Taylor, Arthur

Whipple, Shirley G.\*

### Treasurer/Tax Collector

Chalikian, Nubar

Holguin, Margarita

### Department Not Designated

Baker, Juanita\*

Barksdale, Warren A.

Blewett, John E.

Bush, Gloria K.

Bowman, Joan P.

Chaffee, Robert L.

Chamberlain, Robert

Dingler, Janet K.

Drescher, George M.

Glass, Charles H.

Graf, Robert F.

Harrison, Joe H.

Hewson, Mary E.

Johnson, Dora H.

Jones, Frederick R.

Jordan, William H

Kerschner, James W.

Kupps, Jean M.

Landaal, Betty W.\*

Lancaster, Ruth T.

Manning, Ronald M.

Markham, Sandra J.

McCain, Carson N.

Mcinnis, Jessie E.

Mckinley, Jean L.

Peltier, Mabel O.\*

Perez, Amelia C.

Plunkett, Evelyn

Prime, Thomas D.

Ramsey, June S.

Riney, Doyle V.

Schwager, Robert L.

Sirulnick, Sylvia

Smith, Leslie R.

Snoke, Miriam L.\*

Soto, Fausto

Valter, Emil

Velis, Peter J.

Wilhite, Ottie F.



# More Pictured From Las Vegas Meeting

Photos by Ida Leon Ramos



New RELAC member Beverly Reese seems to be enjoying the life of a retiree.



Seen at RELAC's Las Vegas Meeting were Clint Moore, Mike Zabaro, and James and Marge McAdam



Hungry RELAC members and guests dig into the luncheon buffet at the Tuscany Hotel

**IMPORTANT!**  
Are you moving?  
Did you change your  
name?

Cut out the address  
portion of this  
newsletter, correct it  
and mail to:

RELAC

1000 S. Fremont Ave.,  
Unit 15 Alhambra, CA  
91803-8802 or

Phone:

(800) 537-3522

(626) 308-0532

Fax: (626) 308-2901

Email:

admin@relac.org

website:

www.relac.org

Note: It is important  
that you mail this to  
RELAC or contact  
RELAC by phone  
as we DO NOT  
receive your address  
change from  
LACERA.



RETIRED EMPLOYEES  
of LOS ANGELES COUNTY  
1000 South Fremont Ave. Unit 15  
Alhambra, CA 91803-8802

Return Service Requested

NON-PROFIT  
U.S. POSTAGE  
**PAID**  
PERMIT #66  
PASADENA, CA